

KITCHEN HOOD SCHEDULE																	
MARK	MANUFACTURER AND MODEL	LOCATION	AIR			FILTERS		FIRE SYSTEM		ELECTRICAL		PHYSICAL					NOTES
			SUPPLY AIRFLOW RATE (CFM)	EXHAUST AIRFLOW RATE (CFM)	FAN	QUANTITY	TYPE	MINIMUM CIRCUIT AMPS (FLA)	VOLT/PH	NUMBER OF LIGHTS	LENGTH (FT-IN.)	MATERIAL	COLLAR SIZE (INCH)	HOOD PRESSURE DROP (IN. W.C.)			
GFKH-1	CAPTIVE-AIRE 7230 ND-2-ACPSF-F	PIZZA OVEN	---	1275	GFHEF-1	6	CAPTRATE SOLO	ANSUL	---	120/1	5	8'-6"	430 S.S.	100	0.498	1-10	

NOTES: (NOT ALL MAY APPLY)
 1. ALL EXPOSED SURFACES ARE TO BE FABRICATED OF 18 GA. TYPE 430 SS.
 2. ALL NON-EXPOSED STRUCTURAL SURFACES TO BE 18 GA. GALVANIZED STEEL.
 3. PROVIDE WITH 3-INCH STANDOFF.
 4. HOODS ARE OF UL LISTED CONSTRUCTION AND SHALL BE INSTALLED IN ACCORDANCE WITH ALL UL SPECIFICATIONS.
 5. EXHAUST HOODS SHALL BE FIELD CUT FOR THE INSTALLATION OF THE EXHAUST COLLARS. EXHAUST COLLARS SHALL BE INSTALLED IN HOODS PER MANUFACTURER'S SPECIFICATIONS TO COMPLY WITH ANY APPLICABLE CODES FOR A LIQUID TIGHT SEAM.
 6. GREASE FILTERS ARE OF UL LISTING R6593, AND SHALL BE CLASS 1 WHEN TESTED IN ACCORDANCE WITH THE TEST METHOD IN SFM 12-71-1.
 7. PROVIDE WITH ANSUL SYSTEM ON TOP.
 8. EXHAUST HOOD SHALL BE FURNISHED BY OWNER AND INSTALLED BY THE MECHANICAL CONTRACTOR.
 9. FOR ADDITIONAL INFORMATION PERTAINING TO THE HOOD PACKAGE, CONTACT TRIXIE PERRY OF CAPTIVEAIRE AT 919.882.2410 (EXT. 315) OR TRIXIE@CAPTIVEAIRE.COM.
 10. GREASE EXHAUST PLENUM TO BE 18 GA. GALVANIZED STEEL, CONTINUOUSLY WELDED AND PITCHED AT A MINIMUM 1/4" PER FOOT TO A CLEANABLE RECEPTOR (PROVIDED BY HOOD SUPPLIER.)

FAN SCHEDULE										
MARK	MANUFACTURER/ MODEL	LOCATION	DRIVE TYPE	MIN. CAP.		FAN SPEED		MOTOR (BY M.C.)		NOTES
				CFM	SP	HP	RPM	VOLT/PH		
GFHEF-1	CAPTIVEAIRE DU85HFA	PIZZA OVEN	DIRECT	1282	1.2	1305	1	1500	208/1	1,3,5,6,7,8
GFMAU-1	CAPTIVEAIRE A1-E-202-1SD-MFU	PIZZA OVEN	BELT	1010	0.25	1227	1	1725	208/1	1,2,8,7

NOTES:
 1. EXHAUST FAN SHALL BE CONTROLLED VIA INTEGRATED CONTROL PACKAGE. COORDINATE REQUIRED WORK WITH THE ELECTRICAL CONTRACTOR.
 2. PROVIDE WEATHER PROOF DISCONNECT SWITCH IN SIGHT OF THE EQUIPMENT. COORDINATE REQUIRED WORK WITH THE ELECTRICAL CONTRACTOR.
 3. WEATHER PROOF DISCONNECT SWITCH AND INTERNAL WIRING SHALL BE FACTORY INSTALLED.
 4. PROVIDE GRAVITY BACK DRAFT DAMPER.
 5. PROVIDE FACTORY AVAILABLE GREASE BOX.
 6. EXHAUST FAN SHALL BE FURNISHED BY OWNER AND INSTALLED BY THE MECHANICAL CONTRACTOR.
 7. FOR ADDITIONAL INFORMATION PERTAINING TO THE FAN PACKAGE, CONTACT TRIXIE PERRY AT (919) 882-2410 x315 OR TRIXIE@CAPTIVEAIRE.COM.
 8. PROVIDE DRAIN LINE HEATER OPTION FOR GREASE FANS.

AIR DEVICE SCHEDULE														
MARK	MANUFACTURER	MODEL	SERVICE	NECK SIZE (IN.)	MODULE SIZE	MAX. AIRFLOW RATE (CFM)	STATIC PRESSURE DROP (IN. H2O)	THROW @50 FPM (FT)	MAXIMUM NC RATING	PATTERN	THROW DIRECTION	MATERIAL	BORDER	NOTES
B	NAILOR	UNI	SUPPLY	8"Ø	24"X24"	245	0.06	8.0	<10	4-WAY	HORIZONTAL	STEEL	LAY-IN	1-5
C	NAILOR	UNI	SUPPLY	10"Ø	24"X24"	382	0.09	12.0	15	4-WAY	HORIZONTAL	STEEL	LAY-IN	1-5
D	NAILOR	4323CBA	SUPPLY	8"Ø	16"X16"	210	0.06	10.0	21	4-WAY	HORIZONTAL	ALUMINUM	SURFACE	1-5
E	NAILOR	5145H	RETURN	22"X22"	24"X24"	1268	0.05	---	20	---	---	ALUMINUM	LAY-IN	1-6
F	NAILOR	515H-0A	EXHAUST	10"X10"	11.75"X11.75"	305	0.09	---	19	---	---	ALUMINUM	SURFACE	1-5
G	NAILOR	61FR-S-GU-AW-A	SUPPLY	12"Ø	24"X48"	800	0.09	2	26	PERFORATED DUMP	VERTICAL	STEEL	LAY-IN	1-6

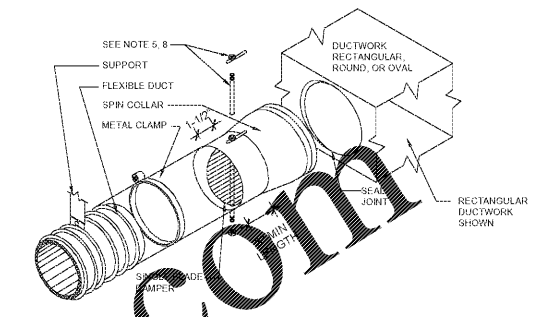
GENERAL NOTES:
 A. NOT ALL AIR DEVICES LISTED MAY BE USED ON PLANS.
 NOTES:
 1. BORDER TYPES SHALL BE COMPATIBLE WITH ARCHITECTURAL CEILING TYPE FOR THE ROOM IN WHICH THE AIR DEVICE IS LOCATED.
 2. SEE HVAC PLANS FOR LOCATION AND AIR QUANTITIES OF EACH AIR DEVICE.
 3. ALL AIR DEVICES SHALL BE TESTED IN ACCORDANCE WITH ASHRAE STANDARD 70-91.
 4. NC VALUES ARE BASED UPON A 10 dB ROOM ATTENUATION.
 5. OWNER PROVIDED AND CONTRACTOR INSTALLED. REFER TO SPECIFICATIONS.
 6. PROVIDE FIELD BUILT PLENUM 46x22x27 HIGH PLENUM 12"Ø SIDE INLET.

SPLIT-DUCTLESS FAN COIL SCHEDULE											
MARK	MANUFACTURER/ MODEL	TYPE	OPERATION	SUPPLY FAN		COOLING CAPACITY		ELECTRICAL		WEIGHT	NOTES
				CFM	OSA (CFM)	MBH COOLING	SENS. TOTAL	VOLT/PH	FLA		
DFC-1	SAMSUNG AC018NN4DC/AA	CEILING MOUNT CASSETT	COOLING	880	0	---	18,000	208/1	0.6	33	1-6

NOTES:
 1. PROVIDE BY OWNER FOR INSTALLATION BY CONTRACTOR.
 2. CONTRACTOR SHALL VERIFY WITH EQUIPMENT SUPPLIER THE SIZE OF REFRIGERANT PIPING.
 3. PROVIDE CASSETTE GRILLE (PC4NFMUN).
 4. INSTALL PER MANUFACTURER'S RECOMMENDATIONS.
 5. PROVIDE WIRED REMOTE THERMOSTAT (MWR-WE13UN).
 6. ROUTE CONDENSATE TO NEAREST APPROVED RECEPTOR.

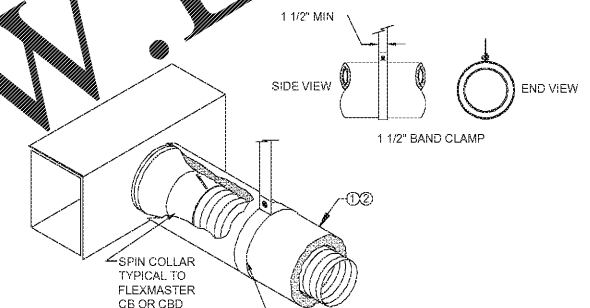
AIR COOLED CONDENSING UNIT SCHEDULE								
MARK	MANUFACTURER/ MODEL	CAPACITY (TONS)	ELECTRICAL				WEIGHT	NOTES
			VOLT/PH	MCA	MOCF	WEIGHT		
HP-1	SAMSUNG AC015JXADCH/AA	1.5	208/1	8.1	15	99	1-7	

NOTES:
 1. CONDENSING UNIT ID CORRESPOND WITH INDOOR SYSTEM ID.
 2. PROVIDED BY OWNER FOR INSTALLATION BY CONTRACTOR.
 3. PROVIDE COIL HAIL GUARD.
 4. PROVIDE LOW AMBIENT WIND BAFFLE KIT.
 5. INSTALL PER MANUFACTURER'S RECOMMENDATIONS.
 6. PROVIDE WITH KINETICS AC ISOLATION MOUNT BOLTED TO 6-FT LONG EQUIPMENT RAIL.
 7. MANUFACTURER'S REPRESENTATIVE CONTACT: KYLE REEVES (405) 947-8502.



- NOTES:
 1. SUPPORT AS REQUIRED.
 2. LEAD TO COLLAR 1/2" MIN FROM OUTBOARD END OF COLLAR.
 3. INSTALL SPIN COLLAR DAMPER IN OPEN POSITION; FINAL ADJUSTMENT BY TAB CONTRACTOR.
 4. FLEXIBLE DUCTWORK INSULATION UP TO END OF SPIN COLLAR AT EDGE OF RECTANGULAR DUCTWORK.
 5. PROVIDE VAPOR BARRIER W/ GREY TAPE TO PREVENT MOISTURE MIGRATION.
 6. PROVIDE TENSION RODS TO ACCOMMODATE INSULATION, PULL TO EDGE OF DUCTWORK AS SHOWN AND SEAL TO EFFECT VAPOR BARRIER.
 7. PROVIDE RIVET OR SHEET METAL SCREWS MIN 3 EA AT 120" INTERVALS, CONNECTING STOVEPIPE TO COLLAR. ENSURE RIVETS OR SCREWS DO NOT INTERFERE W/ DAMPER.
 8. TAPE AND SEAL ALL JOINTS TO PREVENT LEAKAGE.
 9. INSTALL LOCKING QUADRANT AND HANDLE ON BOTTOM OF DUCT FOR EASY SERVICE (SHOWN ON TOP FOR EASE OF ILLUSTRATION ONLY).
 10. INSTALL PER SMACNA AND ALL LOCAL CODES.

6 SPIN COLLAR FLEXIBLE DUCT CONNECTOR WITH DAMPER
SCALE: N.T.S.

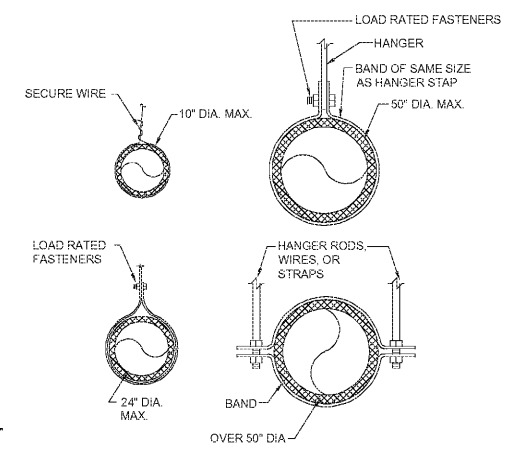


GAUGE	THK.	1" STRAP CAPABILITY	MAXIMUM LOAD
24	.028	840	188
22	.034	1070	216
20	.040	1298	259

* ELASTIC LIMIT ASSUMED 30% RECOMMEND MAX LOAD (20% OF YIELD STRENGTH).

- NOTES:
 1. FLEX DUCT WITH EXTERNAL INSULATION AND VAPOR BARRIER JACKING TYPICAL TO "FABRIFLEX".
 2. ALL FLEX DUCT SHALL CONFORM TO UL STANDARD 181 WITH THE UL LABEL PRINTED ON THE DUCT EVERY 10 FEET.

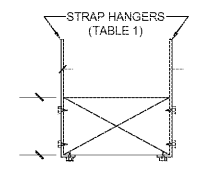
5 SUGGESTED SUPPORT REQUIREMENTS FOR FLEX DUCT
SCALE: N.T.S.



MINIMUM HANGER SIZES FOR ROUND DUCT				
DIA.	MAX. SPACING	WIRE DIAMETER	ROD	STRAP
10"DN	12"	(1) 12 GA.	1/4"	1"X22 GA.
11-18"	12"	(2) 12 GA. OR (1) 8 GA.	1/4"	1"X22 GA.
19-24"	12"	(2) 10 GA.	1/4"	1"X22 GA.
25-36"	12"	(2) 8 GA.	3/8"	1"X20 GA.
37-50"	12"	---	(2) 3/8"	(2) 1"X20 GA.
51-60"	12"	---	(2) 3/8"	(2) 1"X16 GA.
61-64"	12"	---	(2) 3/8"	(2) 1"X16 GA.

- NOTES:
 1. STRAPS ARE GALVANIZED STEEL; RODS ARE UNCOATED OR GALVANIZED STEEL; WIRE IS BLACK ANNEALED, BRIGHT BASIC OR GALVANIZED STEEL; ALL ARE ALTERNATIVES.
 2. TABULATED DATA FROM 1985 SMACNA STANDARDS ALLOWS FOR DUCT REINFORCING AND INSULATION, BUT NO EXTERNAL LOAD.
 3. HANGERS MUST NOT DEFORM DUCT SHAPE.

1 ROUND DUCT HANGER SPACING
SCALE: N.T.S.

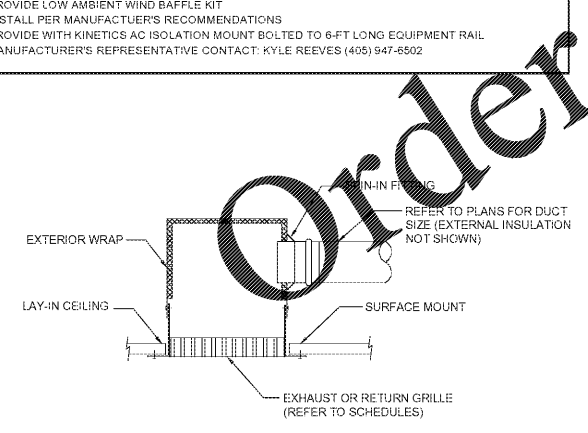


WxD MAX.	TABLE 1 STRAP HANGERS (PAIR) SPACED		
	10' - 0" MAX.	8' - 0" MAX.	6' - 0" MAX.
72"	1" X 22 GA.	1" X 22 GA.	1" X 22 GA.
96"	1" X 20 GA.	1" X 22 GA.	1" X 22 GA.
120"	1" X 16 GA.	1" X 22 GA.	1" X 22 GA.
168"	---	1" X 16 GA.	1" X 16 GA.
192"	---	1" X 16 GA.	1" X 16 GA.

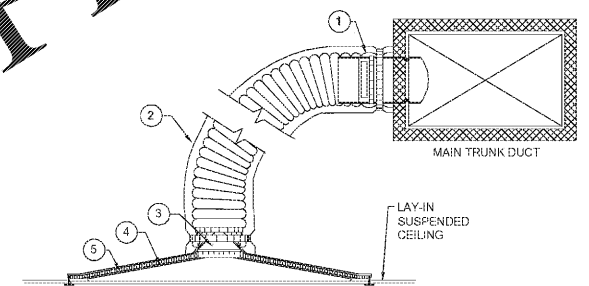
193" SPECIAL ANALYSIS REQUIRED

- NOTES:
 1. TABULATED DATA FROM SMACNA ALLOWS FOR DUCT REINFORCING AND INSULATION, BUT NO EXTERNAL LOAD.
 2. PROVIDE HIGH DENSITY INSERT AT TRAPEZE FOR INSULATED DUCTS.

2 RECTANGULAR DUCT HANGER
SCALE: N.T.S.



4 TYPICAL SURFACE MOUNT RETURN GRILLE
SCALE: N.T.S.



- NOTES:
 1. SPIN COLLAR TYPE CONNECTOR, EXTERNALLY INSULATED, WITH VOLUME DAMPER AND DAMPER LOCK. RE: DETAIL G BELOW.
 2. PRE-INSULATED FLEX DUCT AS REQUIRED. INSTALLED, PERMANENTLY SEALED AND SUPPORTED TO PREVENT KINKING AND SHARP TURNS.
 3. ROUND TO SQUARE ADAPTER AS REQUIRED.
 4. LAY-IN TYPE CEILING DIFFUSER WITHOUT VOLUME DAMPER.
 5. PROVIDE 1 1/2" THICK INSULATION, FOIL BACKED MINERAL WOOL JACKET TO COMPLETELY COVER DIFFUSER CONE FOIL TO COME WITH FIBER REINFORCED FOIL BACKED TAPE.
 6. 1-90° TURN ALLOWED.
 7. MAXIMUM FLEX LENGTH NOT TO EXCEED 10' 0"

3 TYPICAL FLEXIBLE DUCT DIFFUSER DETAIL
SCALE: N.T.S.

WWW.LDILINE.COM @

Order Plans

HFA
HARRISON FRENCH & ASSOCIATES, LTD.
 1705 S. Walton Blvd., Suite 3
 Bentonville, Arkansas 72712
 t: 479.273.7780
 f: 888.520.0685
 www.hfa-ae.com

STIPULATION FOR REUSE
 THIS DRAWING AND SCHEDULES ARE THE PROPERTY OF HARRISON FRENCH & ASSOCIATES, LTD. AND ARE TO BE USED ONLY FOR THE PROJECT AND SITE SPECIFICALLY IDENTIFIED ON THE DRAWING. ANY REUSE OF THIS DRAWING OR SCHEDULES FOR ANY OTHER PROJECT WITHOUT THE WRITTEN PERMISSION OF HARRISON FRENCH & ASSOCIATES, LTD. IS STRICTLY PROHIBITED. ANY REUSE OF THIS DRAWING OR SCHEDULES FOR ANY OTHER PROJECT WITHOUT THE WRITTEN PERMISSION OF HARRISON FRENCH & ASSOCIATES, LTD. IS STRICTLY PROHIBITED.

REMODEL
 STORE NUMBER: 447
 DATE CHANGED: 05/11/2021
 JOB NUMBER: 03-18-10417

ISSUE BLOCK	

CHECKED BY: JKR
 DRAWN BY: DNM
 DOCUMENT DATE: 02/05/21

REGISTERED PROFESSIONAL ENGINEER
 No. 11803661
 STATE OF ARIZONA
 2021.02.08 15:49:05-06'00"

MECHANICAL DETAILS AND SCHEDULES

SHEET: M3

FILED: 2024.03.27 PM 1:48:55 (MOUNTAIN TIME)
 L:\2024\15-10417\15-10417-MECHANICAL\DETAILS AND SCHEDULES\11T.dwg