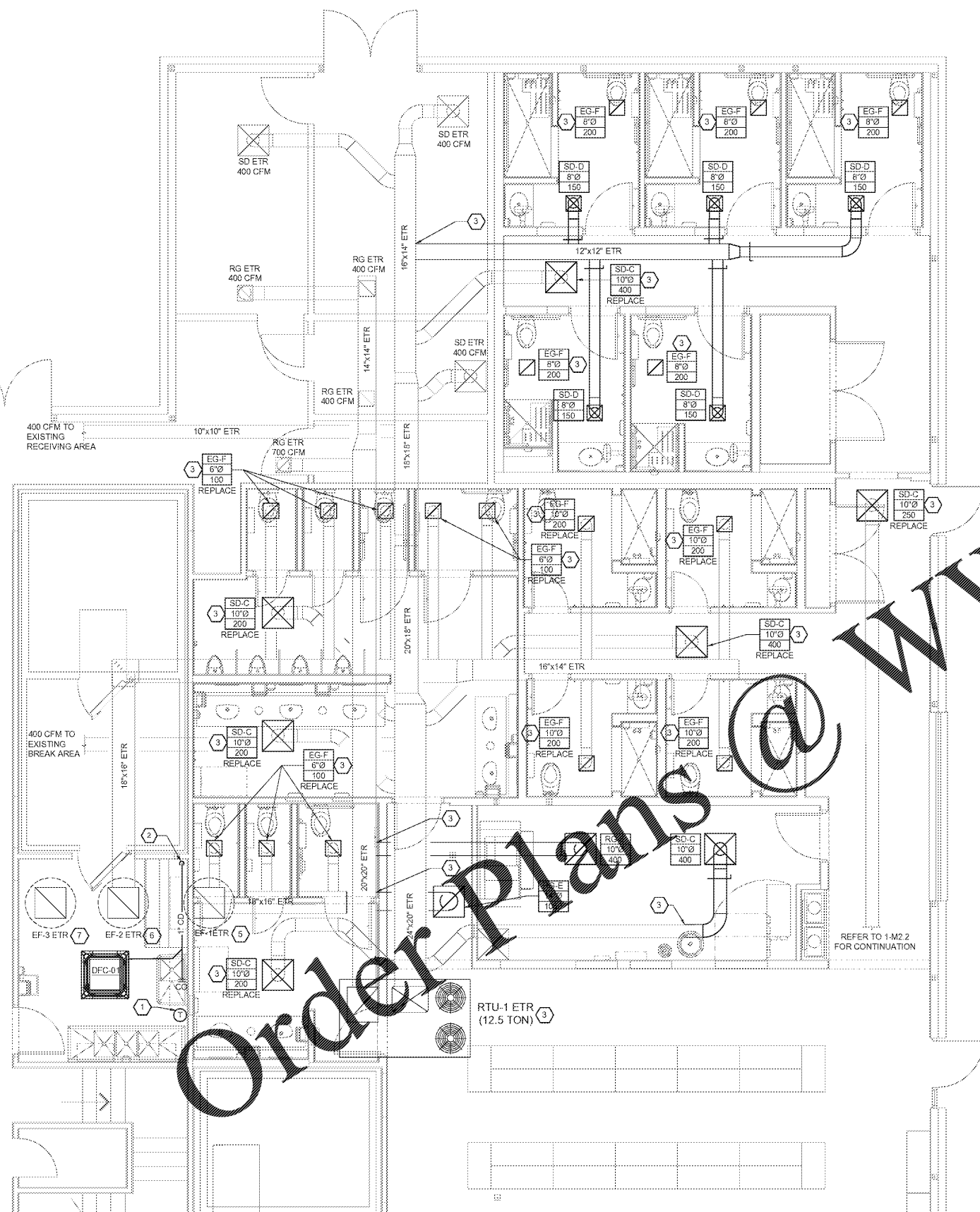
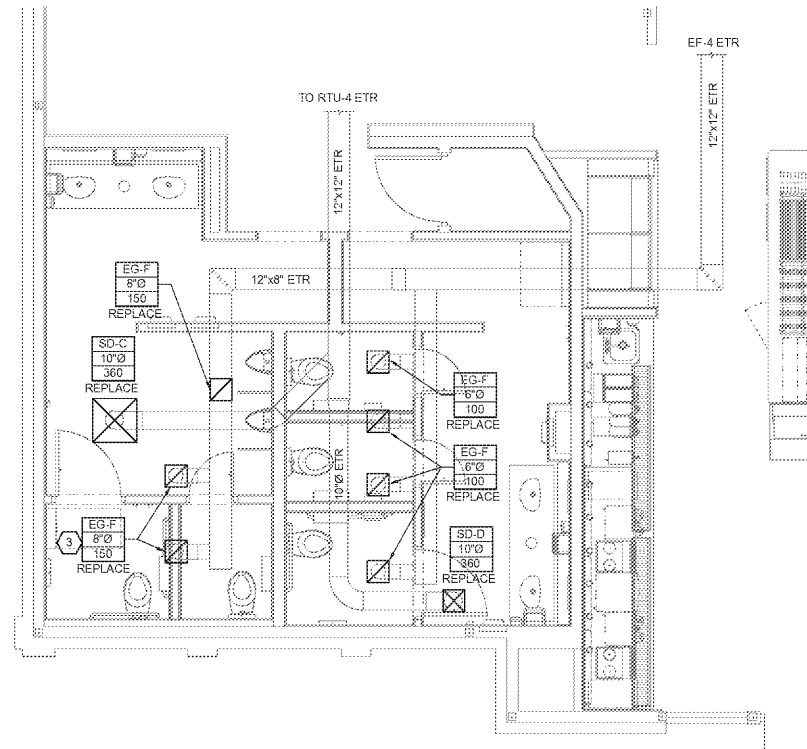


File: 2024.03.27.mechanical_floor_plans_417.dwg
 L:\030315-1047\Drawings\417\MECHANICAL_FLOOR_PLANS_417.dwg



2 PREP ROOM/REAR RESTROOM HVAC PLAN
 SCALE: 1/4"=1'-0"



1 FRONT RESTROOM HVAC PLAN
 SCALE: 1/4"=1'-0"

KEYNOTES

1. WALL MOUNTED THERMOSTAT AT 54" AFF. COORDINATE PLACEMENT WITH WALL DECOR AND EQUIPMENT. FIELD VERIFY WITH THE OWNER'S REPRESENTATIVE FOR THE FINAL LOCATION PRIOR TO INSTALLATION.
 2. CONDENSATE DOWN AND INDIRECTLY DRAIN WITH AIR GAP INTO FLOOR DRAIN; STRAP TIGHT TO WALL 2" ABOVE RM.
 3. CONNECT NEW DUCTWORK TO EXISTING DUCTWORK. REDISTRIBUTE AIR FROM EXISTING DUCTWORK TO MATCH NEW CFM REQUIREMENTS. FIELD VERIFY SIZE AND LOCATION OF EXISTING DUCTWORK.
 4. EXISTING RTU-1 TO REMAIN ON ROOF; MODEL LENNOX LGH150H48. FIELD VERIFY UNIT IS IN PROPER WORKING CONDITION AND REPLACE ACCESSORIES PER MANUFACTURER'S RECOMMENDATIONS. REBALANCE EXISTING SUPPLY AIR BALANCE TO 4550 CFM AND OUTSIDE AIR TO 1200 CFM.
 5. EXISTING EF-1 TO REMAIN ON ROOF; MODEL PENNBARRY DX13B. FIELD VERIFY UNIT IS IN PROPER WORKING CONDITION AND REPLACE ACCESSORIES PER MANUFACTURER'S RECOMMENDATION. REBALANCE EXHAUST AIR TO 300 CFM.
 6. EXISTING EF-1 TO REMAIN ON ROOF; MODEL PENNBARRY DX13B. FIELD VERIFY UNIT IS IN PROPER WORKING CONDITION AND REPLACE ACCESSORIES PER MANUFACTURER'S RECOMMENDATION. REBALANCE EXHAUST AIR TO 1,300 CFM.
 7. EXISTING EF-1 TO REMAIN ON ROOF; MODEL PENNBARRY DX13B. FIELD VERIFY UNIT IS IN PROPER WORKING CONDITION AND REPLACE ACCESSORIES PER MANUFACTURER'S RECOMMENDATION. REBALANCE EXHAUST AIR TO 1,000 CFM.
 8. CONNECT EXISTING EF-3 DUCTWORK SERVING REAR SHOWER AREA. FIELD VERIFY SIZE AND LOCATION OF EXISTING DUCTWORK. ENSURE MAIN DUCT TRUNK FROM EXHAUST FAN CAPABLE TO HANDLE 1,000 CFM APPROX. 14"X12"
- EXISTING CONDITIONS WERE TAKEN FROM ORIGINAL DRAWINGS AND DO NOT REFLECT EXACT "AS-BUILT" CONDITIONS. CONTRACTOR SHALL FIELD VERIFY ALL EXISTING CONDITIONS PRIOR TO SUBMITTING FINAL BIDS. CONTRACTOR SHALL CAREFULLY COORDINATE NEW WORK AND DEMOLITION WITH ALL OTHER DISCIPLINES AND EXISTING CONDITIONS.
- EACH SUBCONTRACTOR IS RESPONSIBLE FOR HAVING A THOROUGH KNOWLEDGE OF ALL DRAWINGS AND SPECIFICATIONS IN THEIR RELATED FIELD. THE FAILURE TO ACQUAINT HIMSELF WITH THIS KNOWLEDGE DOES NOT RELIEVE THE RESPONSIBILITY OF PERFORMING HIS WORK PROPERLY. NO ADDITIONAL COMPENSATION SHALL BE ALLOWED BECAUSE OF CONDITIONS THAT OCCUR DUE TO FAILURE TO FAMILIARIZE WORKERS WITH THIS KNOWLEDGE.

GENERAL NOTES

1. ALL MECHANICAL HVAC AND PLUMBING WORK SHALL BE PERFORMED IN STRICT ACCORDANCE WITH THE BASE BUILDING SPECIFICATION AND WITH THE LATEST EDITION OF THE PREVAILING STATE MECHANICAL, PLUMBING AND BUILDING CODES AS WELL AS ALL REGULATIONS THAT MAY APPLY. IN CASE OF CONFLICT BETWEEN THE CONTRACT DOCUMENTS AND A GOVERNING CODE OR ORDINANCE THE MORE STRINGENT STANDARD SHALL APPLY.
2. COORDINATE EXACT LOCATIONS OF AIR DISTRIBUTION DEVICES WITH CEILING AND LIGHT FIXTURE LAYOUT - VERIFY WITH THE ARCHITECT.
3. ALL RECTANGULAR SUPPLY DUCTS ELBOWS SHALL HAVE SINGLE THICKNESS TURNING VANES.
4. ALL AIR CONDITIONING DUCTWORK SHALL BE SMACNA 1" PRESSURE CLASSIFICATION WITH SEAL CLASS 'A'.
5. DUCT SIZES SHOWN ARE ACTUAL INSIDE CLEAR DIMENSIONS. SHEET METAL CONTRACTORS SHALL INCREASE SIZES FOR DUCTWORK REQUIRED TO BE USED TO ALLOW FOR 1-INCH THICK INSULATION TO KNAUF TYPE "EM" - MINIMUM CLEARANCE.
6. COORDINATE ROUTING OF DUCTWORK WITHIN STRUCTURE WITH THE LOCATION OF COLUMNS, JOIST AND BEAMS.
7. ALL ROUND AIR CONDITIONING DUCTWORK SHALL HAVE 2-INCH THICK EXTERIOR DUCT WRAP CONSISTING OF A FIBERGLASS BLANKET WITH FACTORY APPLIED VAPOR BARRIER FACING AND HAVING A MINIMUM R-VALUE OF 5.6, UNLESS NOTED OTHERWISE.
8. IT IS THE INTENT TO HAVE ALL AIR SYSTEMS INCLUDING KITCHEN EXHAUST AND MAKE-UP AIR BALANCED BY AN INDEPENDENT TAB CERTIFIED NEBB CONTRACTOR. AIR QUANTITIES IN MAIN DUCT SHALL BE MEASURED BY PITOT TUBE TRAVERSES. OUTLET AND INLET AIR QUANTITIES SHALL BE DETERMINED IN ACCORDANCE WITH NEBB PROCEDURES. THE NEBB TAB FIRM SHALL PROVIDE A CERTIFICATE OF CONFORMANCE CERTIFICATION TO THE OWNER.
9. UNLESS DIMENSIONED, THE WORK SHOWN ON THE CONTRACT DRAWINGS IS DIAGRAMMATIC, ILLUSTRATING THE GENERAL ARRANGEMENT. CONTRACTOR SHALL ADHERE TO ARRANGEMENT SHOWN AS CLOSELY AS THE ACTUAL CONSTRUCTION WILL PERMIT.
10. CONTRACTOR SHALL VERIFY EXACT EQUIPMENT DIMENSIONS, CLEARANCES, AND FIELD DIMENSIONS RELATIVE TO LOCATIONS OF STRUCTURAL FRAMING. CHANGES REQUIRED IN ROUTING OR SIZES OF DUCTWORK TO MAKE WORK SHOWN CONFORM TO PROJECT REQUIREMENTS RESULTING FROM FIELD COORDINATION PROBLEMS SHALL BE IDENTIFIED, ILLUSTRATED, AND SUBMITTED TO THE ENGINEER FOR PRIOR REVIEW AND APPROVAL BEFORE INSTALLATION.



STIPULATION FOR REUSE
 THIS DRAWING AND ANY INFORMATION CONTAINED HEREIN IS THE PROPERTY OF HARRISON FRENCH & ASSOCIATES, LTD. IT IS TO BE USED ONLY FOR THE PROJECT AND SITE SPECIFICALLY IDENTIFIED ON THE DRAWING OR OTHERWISE SPECIFIED BY THE ARCHITECT. IT IS TO BE REPRODUCED, COPIED, OR TRANSMITTED IN ANY FORM OR BY ANY MEANS, WITHOUT THE WRITTEN PERMISSION OF HARRISON FRENCH & ASSOCIATES, LTD.

REMODEL

STORE NUMBER: 417
 105 CHINA ST.
 GRANT, IN 46505
 JOB NUMBER: 03-16-10417

ISSUE BLOCK

NO.	DESCRIPTION	DATE

CHECKED BY: JKR
 DRAWN BY: DNM
 DOCUMENT DATE: 02/05/21



MECHANICAL FLOOR PLANS

SHEET M2.3