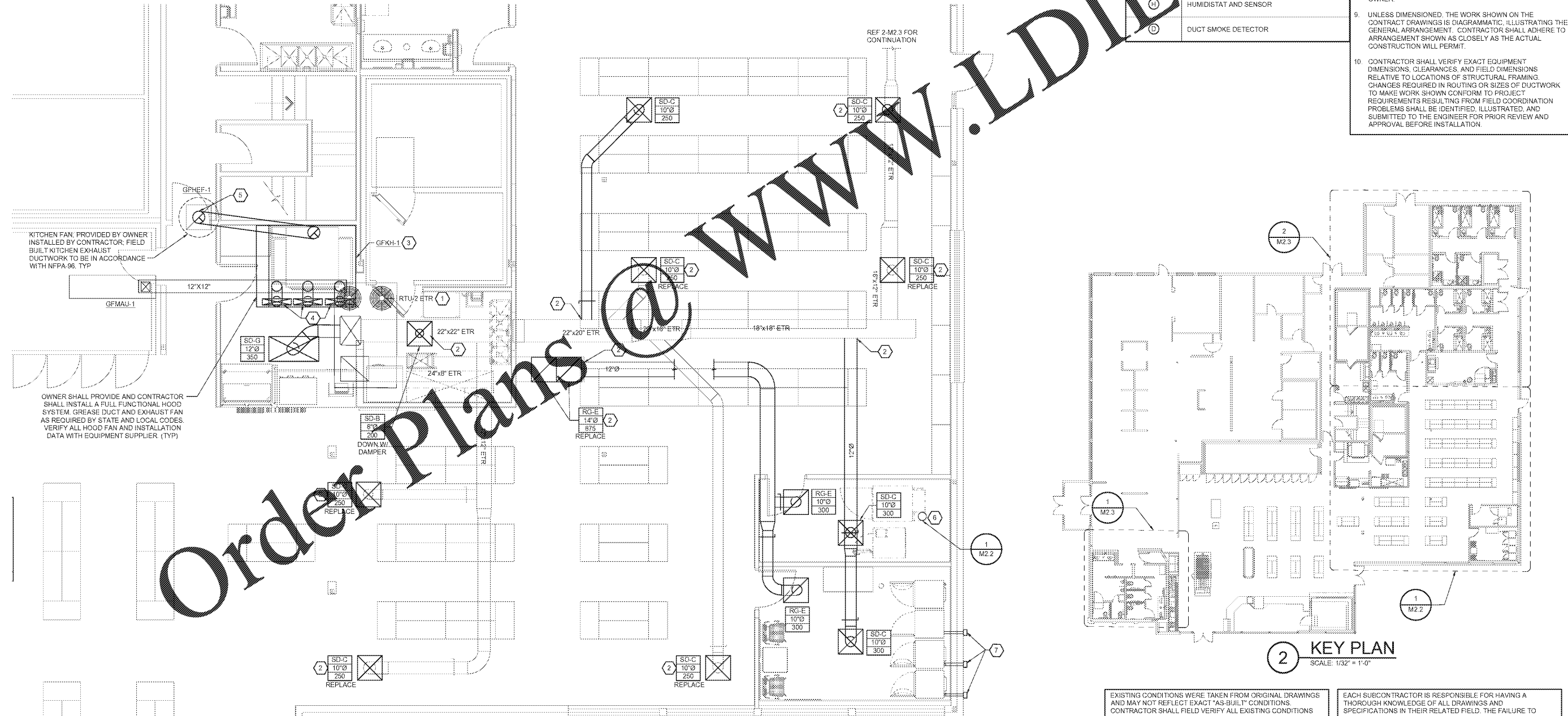


1 DRYER DUCT SCHEMATIC
SCALE: N.T.S.

KEYNOTES	MECHANICAL SYMBOLS	GENERAL NOTES
1. EXISTING RTU-2 TO REMAIN ON ROOF. MODEL LENNOX LGH10Z48. FIELD VERIFY UNIT IS IN PROPER WORKING CONDITION AND REPLACE ACCESSORIES PER MANUFACTURER'S RECOMMENDATIONS. REBALANCE EXISTING SUPPLY AIR BALANCE TO 3,150 CFM AND OUTSIDE AIR TO 800 CFM.	18"X12" 12"Ø	1. ALL MECHANICAL HVAC AND PLUMBING WORK SHALL BE PERFORMED IN STRICT ACCORDANCE WITH THE BASE BUILDING SPECIFICATION AND WITH THE LATEST EDITION OF THE PREVAILING STATE MECHANICAL, PLUMBING AND BUILDING CODES AS WELL AS ALL REGULATIONS THAT MAY APPLY. IN CASE OF CONFLICT BETWEEN THE CONTRACT DOCUMENTS AND A GOVERNING CODE OR ORDINANCE THE MORE STRINGENT STANDARD SHALL APPLY.
2. CONNECT NEW DUCTWORK TO EXISTING DUCTWORK. REDISTRIBUTE AIR FROM EXISTING DUCTWORK TO MATCH NEW CFM REQUIREMENTS. FIELD VERIFY SIZE AND LOCATION OF EXISTING DUCTWORK.	Supply duct in section Return or exhaust duct in section	2. COORDINATE EXACT LOCATIONS OF AIR DISTRIBUTION DEVICES WITH CEILING AND LIGHT FIXTURE LAYOUT - VERIFY WITH THE ARCHITECT.
3. KITCHEN FAN AND HOOD: CONTRACTOR SHALL INSTALL A FULLY FUNCTIONAL HOOD SYSTEM, GREASE DUCT AND EXHAUST FAN AS REQUIRED BY STATE AND LOCAL CODES. VERIFY ALL HOOD, FAN AND INSTALLATION DATA WITH EQUIPMENT SUPPLIER.	Elbow with turning vanes	3. ALL RECTANGULAR SUPPLY DUCTS ELBOWS SHALL HAVE SINGLE THICKNESS TURNING VANES.
4. CONNECT 28"X8" MAKEUP AIR RUNOUT TO HOOD SUPPLY PLENUM CONNECTION. BALANCE EACH CONNECTION TO 340 CFM USING VOLUME DAMPER ON HOOD SUPPLY PLENUM.	Round (or oval) elbow	4. ALL AIR CONDITIONING DUCTWORK SHALL BE SMACNA 1" PRESSURE CLASSIFICATION WITH SEAL CLASS 'A'.
5. 12"Ø GREASE DUCT DOWN TO HOOD. CONTRACTOR TO FURNISH AND CONNECT DUCTWORK FROM EXHAUST FAN TO HOOD IN ACCORDANCE WITH NFPA-96.	Supply air diffuser with round supply duct Return or exhaust air diffuser with round duct	5. DUCT SIZE DOWN AN ACTUAL INSIDE CLEAR DIMENSIONS. SHEET METAL CONTRACTORS SHALL INCREASE SIZES FOR DUCTWORK REQUIRED TO BE LINED TO ALLOW FOR 1-INCH THICK INSULATION TO KNAUF TYPE "EM" - MINIMUM THICKNESS EQUAL TO 1/2" MINIMUM R-VALUE OF 5.6, UNLESS NOTED OTHERWISE.
6. 8"Ø RIGID METAL DRYER VENT INCREASED TO 10" DRYER DUCT TO EXHAUST ON ROOF. TERMINATE WITH GOOSENECK A MINIMUM OF 36" ABOVE ROOF SURFACE. ALL ELBOWS USED FOR DRYER EXHAUST SHALL HAVE A 1.5 MINIMUM RADIUS. PROVIDE AN 8X4" ACCESS PANEL EQUAL TO DUCTIMATE SANDWICH ACCESS DOOR - HI TEMP - FOR CLEANING AT THE BASE OF EACH VERTICAL RISER IN ACCORDANCE WITH IMC SECTION 504.	Diffuser or grille type branch duct & neck size CFM Manual balance damper	6. COORDINATE ROUTING OF DUCTWORK WITHIN STRUCTURE WITH THE LOCATION OF COLUMNS, JOIST AND BEAMS. 7. ALL ROUND AIR CONDITIONING DUCTWORK SHALL HAVE 2-INCH THICK EXTERIOR DUCT WRAP CONSISTING OF A FIBERGLASS BLANKET WITH FACTORY APPLIED VAPOR BARRIER FACING AND HAVING A MINIMUM R-VALUE OF 5.6, UNLESS NOTED OTHERWISE.
7. (3) 4" METAL DRYER EXHAUST OUT TO EXTERIOR WALL. EXHAUST DUCTS SHALL HAVE 45 DEGREE VERTICAL OFFSET TO PENETRATE THE WALL AT 18" AFF. SECURE DUCT IN PLACE - TERMINATE WITH WALL CAP EAL-01 SCHEDULED ON SHEET M3.	Connected existing Existing to remain Remote temperature sensor Humidistat and sensor Duct smoke detector	8. IT IS THE INTENT TO HAVE ALL AIR SYSTEMS INCLUDING KITCHEN EXHAUST AND MAKE-UP AIR BALANCED BY AN INDEPENDENT TAB CERTIFIED NEBB CONTRACTOR. AIR QUANTITIES IN MAIN DUCT SHALL BE MEASURED BY PITO TUBE TRAVERSES. OUTLET AND INLET AIR QUANTITIES SHALL BE DETERMINED IN ACCORDANCE WITH NEBB PROCEDURES. THE NEBB TAB FIRM SHALL PROVIDE A CERTIFICATE OF CONFORMANCE CERTIFICATION TO THE OWNER. 9. UNLESS DIMENSIONED, THE WORK SHOWN ON THE CONTRACT DRAWINGS IS DIAGRAMMATIC, ILLUSTRATING THE GENERAL ARRANGEMENT. CONTRACTOR SHALL ADHERE TO ARRANGEMENT SHOWN AS CLOSELY AS THE ACTUAL CONSTRUCTION WILL PERMIT. 10. CONTRACTOR SHALL VERIFY EXACT EQUIPMENT DIMENSIONS, CLEARANCES, AND FIELD DIMENSIONS RELATIVE TO LOCATIONS OF STRUCTURAL FRAMING. CHANGES REQUIRED IN ROUTING OR SIZES OF DUCTWORK TO MAKE WORK SHOWN CONFORM TO PROJECT REQUIREMENTS RESULTING FROM FIELD COORDINATION PROBLEMS SHALL BE IDENTIFIED, ILLUSTRATED, AND SUBMITTED TO THE ENGINEER FOR PRIOR REVIEW AND APPROVAL BEFORE INSTALLATION.



1 GODFATHER'S / LAUNDRY HVAC PLAN
SCALE: 1/4"=1'-0"

2 KEY PLAN
SCALE: 1/32" = 1'-0"

EXISTING CONDITIONS WERE TAKEN FROM ORIGINAL DRAWINGS AND MAY NOT REFLECT EXACT "AS-BUILT" CONDITIONS. CONTRACTOR SHALL FIELD VERIFY ALL EXISTING CONDITIONS PRIOR TO SUBMITTING FINAL BIDS. CONTRACTOR SHALL CAREFULLY COORDINATE NEW WORK AND DEMOLITION WITH ALL OTHER DISCIPLINES AND EXISTING CONDITIONS.

EACH SUBCONTRACTOR IS RESPONSIBLE FOR HAVING A THOROUGH KNOWLEDGE OF ALL DRAWINGS AND SPECIFICATIONS IN THEIR RELATED FIELD. THE FAILURE TO ACQUAINT HIMSELF WITH THIS KNOWLEDGE DOES NOT RELIEVE THE RESPONSIBILITY OF PERFORMING HIS WORK PROPERLY. NO ADDITIONAL COMPENSATION SHALL BE ALLOWED BECAUSE OF CONDITIONS THAT OCCUR DUE TO FAILURE TO FAMILIARIZE WORKERS WITH THIS KNOWLEDGE.

HFA
HARRISON FRENCH & ASSOCIATES, LTD.
1705 S. Walton Blvd., Suite 3
Bentonville, Arkansas 72712
479.273.7780
888.520.9685
www.hfa-ae.com

STIPULATION FOR REUSE
THIS DRAWING AND SPECIFICATIONS ARE THE PROPERTY OF HARRISON FRENCH & ASSOCIATES, LTD. (HFA). IT IS TO BE USED ONLY FOR THE PROJECT AND LOCATION SPECIFICALLY IDENTIFIED ON THE DRAWING. IT IS NOT TO BE REPRODUCED, COPIED, OR TRANSMITTED IN ANY FORM OR BY ANY MEANS, ELECTRONIC OR MECHANICAL, INCLUDING PHOTOCOPYING, RECORDING, OR BY ANY INFORMATION STORAGE AND RETRIEVAL SYSTEM, WITHOUT THE WRITTEN PERMISSION OF HFA.

REMODEL
STORAGE NUMBER: 417
1985 ORIGIN BY: GARY, IN-14685
JOB NUMBER: 03-18-10417

ISSUE BLOCK

NO.	DESCRIPTION	DATE

CHECKED BY: JKR
DRAWN BY: DNM
DOCUMENT DATE: 02/05/21



MECHANICAL FLOOR PLANS

SHEET
M2.2