

HOOD INFORMATION - JOB#4783687

HOOD NO	TAG	MODEL	MANUFACTURER	LENGTH	MAX COOKING TEMP	TYPE	APPLIANCE DUTY	DESIGN CFM/FT	TOTAL EXH CFM	EXHAUST PLENUM RISER(S)				TOTAL SUPPLY CFM	HOOD CONSTRUCTION	HOOD CONFIG	
										WIDTH	LENG	HEIGHT	SP			END TO END	ROW
1	KH-3 HOOD	3044 BD-2	CAPTIVEAIRE	4' 0"	450 DEG	I	MEDIUM	125	500					0	430 SS WHERE EXPOSED	ALONE	ALONE
2	KH-3 PSP	86 MISC-PSP	CAPTIVEAIRE	4' 1"	300 DEG	I	N/A	0	0					425	430 SS WHERE EXPOSED	ALONE	ALONE

HOOD INFORMATION

HOOD NO	TAG	TYPE	FILTER(S)			EFFICIENCY @ 7 MICRONS	QTY	LIGHT(S)			UTILITY CABINET(S)			FIRE SYSTEM PIPING	HOOD HANGING WEIGHT
			QTY	HEIGHT	LENGTH			TYPE	LOCATION	SIZE	FIRE SYSTEM	ELECTRICAL	SWITCHES		
1	KH-3 HOOD	CAPTIVEAIRE SOLID FILTER	2	16"	20"	85% SEE FILTER SPEC	2	L55 SERIES F26	NO	WALL MNT	12"x36"x24"	ANSUL R102	3.0		193 LBS
2	KH-3 PSP						0							48 LBS	

HOOD OPTIONS

HOOD NO	TAG	OPTION
1	KH-3 HOOD	FIELD WRAPPER 26.00" HIGH FRONT, LEFT, RIGHT. RIGHT END STANDOFF (FIN/SLP) 1" WIDE 30" LONG INSULATED. LEFT QUARTER END PANEL 20" TOP WIDTH, 0" BOTTOM WIDTH, 20" HIGH 430 SS. INSULATION FOR BACK OF HOOD. RISER SENSOR INSTALL 6IN PLEN. RIGHT WALL AS END PANEL.
2	KH-3 PSP	FIELD WRAPPER 11.00" HIGH FRONT, LEFT, RIGHT.

PERFORATED SUPPLY PLENUM(S)

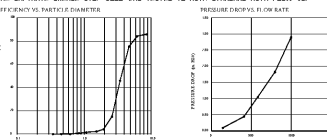
HOOD NO	TAG	POS	LENGTH	WIDTH	HEIGHT	TYPE	RISER(S)			
							WIDTH	LENG	DIA	CFM
2	KH-3 PSP	Front	49'	8'	6'	MUA	6"	16"	212	0.069"
						MUA	6"	16"	212	0.069"

WALL-MOUNT UTILITY CABINET

HOOD NO	LOCATION	SIZE	UTILITY CABINET(S)				WEIGHT
			FIRE SYSTEM	ELECTRICAL	SWITCHES	QUANTITY	
1	WALL MNT	12"x36"x24"	ANSUL R102	3.0			163.00 LBS

SPECIFICATION: CAPTIVEAIRE GREASE-STOP SOLID FILTER

The CAPTIVEAIRE GREASE-STOP SOLID FILTER is a single-stage filter featuring a unique 3-baffle design in conjunction with a slanted rear baffle design to deliver exceptional filtration efficiency. FILTER IS STAINLESS STEEL CONSTRUCTION AND SIZED TO FIT INTO STANDARD 6" HOOD DEEP HOOD CHANNELS. UNITS SHALL INCLUDE STAINLESS STEEL HANDLES AND A FASTENING DEVICE TO SECURE THE TWO COMPONENTS WHEN ASSEMBLED. GREASE EXTRACTION EFFICIENCY PERFORMANCE SHALL REMOVE AT LEAST 75% OF GREASE PARTICLES FROM EXHAUST AIR, AND 99% GREASE PARTICLES FROM EXHAUST AIR IN EXCESS AND LARGER, WITH A CORRESPONDING PRESSURE DROP NOT TO EXCEED 1.0 INCHES OF WATER GAUGE. THE CAPTIVEAIRE GREASE-STOP SOLID WAS TESTED TO ASTM STANDARD ASTM F209-05. (SEE DRAWING FOR TEST RESULTS)



CAPTIVEAIRE FILTERS ARE BUILT IN COMPLIANCE WITH NFPA 96, UL STANDARD 710, UL STANDARD 719, AND UL STANDARD 723. (SEE DRAWING FOR TEST RESULTS)

CAPTIVEAIRE HOODS ARE BUILT IN COMPLIANCE WITH

- GENERAL NOTES:**
- ELECTRICAL HOOD-UP TO CAPTIVEAIRE CONTROLS (MOTOR STARTERS, FAN SWITCHES, DUCT STATS, FAN DISCONNECTS, RELAYS, ETC.) BY OTHERS.
 - FIRE CHASE BY OTHERS, IF REQUIRED.
 - ALL PHASES OF INSTALLATION SHALL COMPLY WITH NFPA 96.
 - WRITTEN MEASUREMENTS HAVE PRECEDENCE OVER SCALE.
 - PROVIDE CLEARDUTS IN EXHAUST AIR DUCTS AS INDICATED TO ALLOW CLEANING AT ALL BENDS AND HORIZONTAL RUNS.
 - EXHAUST DUCT TO BE CAPTIVEAIRE SINGLE WALL WITH 2 LAYERS OF FIRE WRAP OR DOUBLE WALL MODEL R2, R3, OR Z3 PREFABRICATED GREASE DUCT. ALTERNATIVELY, FIELD FABRICATED WELDED GREASE DUCT WITH 2 LAYERS OF FIRE WRAP IS ACCEPTABLE AS LONG AS DUCT IS BUILT WITHOUT SHARP BENDS OR ANY FEATURES THAT CAUSE EXCESSIVE STATIC PRESSURE OR SYSTEM EFFECT.
 - FAN TO HAVE A MINIMUM OF 10 FT. CLEARANCE FROM THE DUCTLET TO ADJACENT BUILDINGS, PROPERTY LINES, AIR WAKES OR 3 FT. VERTICAL CLEARANCE PER NFPA 96.
 - HORIZONTAL EXHAUST DUCT TO SLOPE UP AT LEAST 1/4" PER FOOT TOWARD HOOD FOR LESS THAN 75' LONG.
 - 1" PER FOOT SLOPE FOR DUCT LONGER THAN 75'.
 - HOOD TO OVERHANG COOKING EQUIPMENT 6" ON ALL OPEN SIDES.
 - EXHAUST DUCT TO BE PROTECTED FROM COMBUSTIBLES PER NFPA96 AND LOCAL CODE.
 - BUILDING PRESSURE SHALL NOT EXCEED 0.02" WATER COLUMN AT EXTERIOR DOORS.
 - KITCHEN SHALL BE BALANCED TO BE NEGATIVE WITH RESPECT TO THE DINING ROOM.

IMPORTANT NOTES:

EXISTING MAKE-UP AIR TO BE DUCTED TO NEW PSP.

MAU-1 AIRFLOW TO BE REDUCED TO 3,225 CFM
 - 2,000 CFM TO KH-1
 - 800 CFM TO KH-2
 - 425 CFM TO KH-3

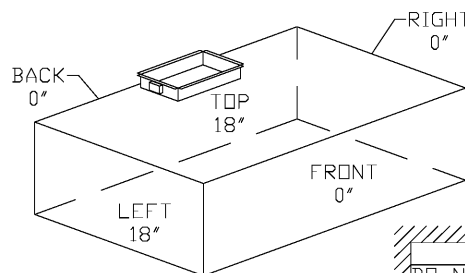
TOTAL AIRFLOW EXHAUSTED WILL BE 4,000 CFM
 - EF-1 STAYS AT 2,500 CFM
 - KEF-2 REDUCED TO 1,000 CFM
 - KEF-3 TO BE 500 CFM

800 CFM TRANSFER AIR NEEDED FROM HYDRA

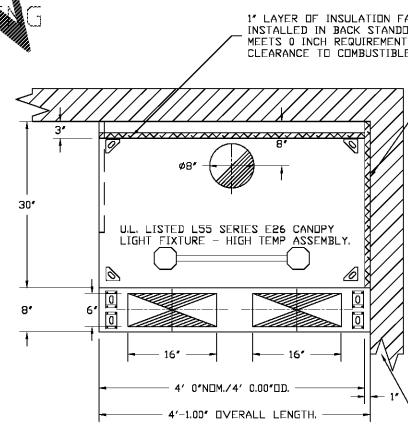
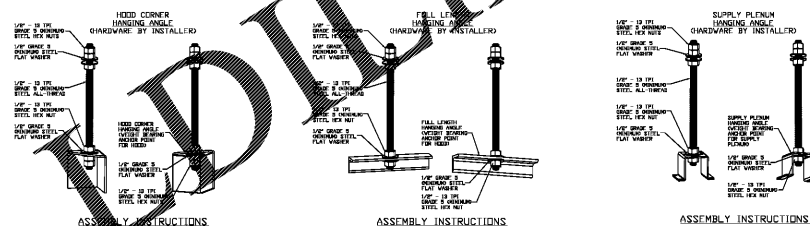
SDV BY FACTORY TECHNICIAN IS REQUIRED FOR PROPER HOOD BALANCING AND PROGRAMMING

FOR QUESTIONS, CALL THE ARKANSAS MECHANICAL SERVICE FAYETTEVILLE, ARKANSAS PHONE: (501) 500-5450 EMAIL: REG146@CAPTIVEAIRE.COM

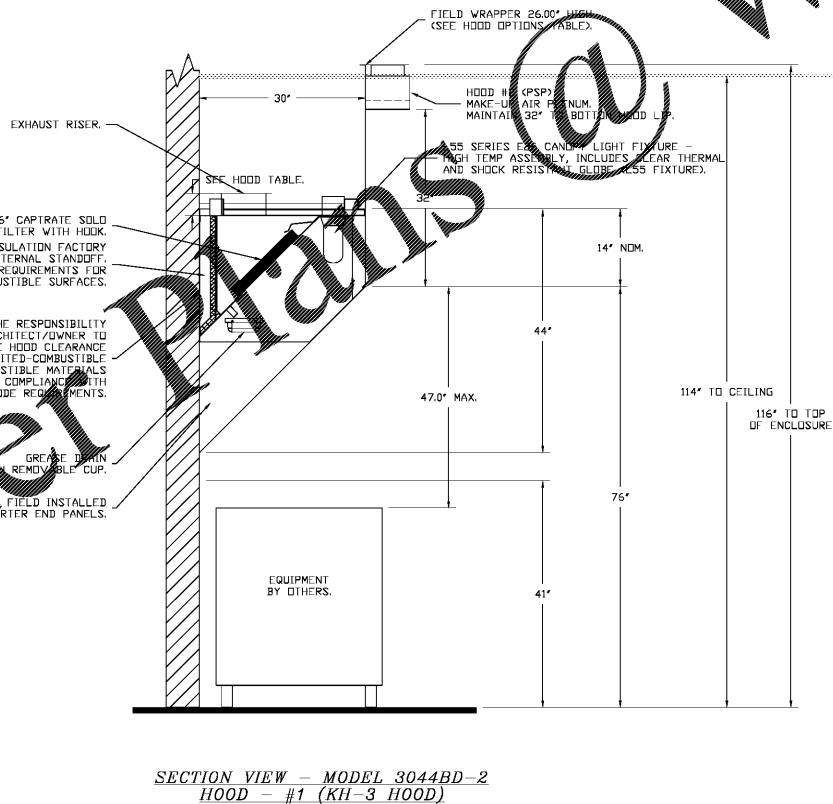
Clearance to combustibles - Hood 1



PLEASE NOTE:
DO NOT INSTALL VAC RETURNS OR FUR FAN DIFFUSERS WITHIN THE FOOT PRINT OF THE HOOD



INSTALLER MUST CONFIRM HOOD IS INSTALLED SUCH THAT THE SPECIFIED WALL, ACTING AS AN END PANEL, IS MATED TIGHT TO THE CORRECT END OF HOOD TO ACHIEVE A REDUCED MINIMUM EXHAUST CFM LISTING. NON-COMPLIANCE WILL NULLIFY THE ETL LISTING. VOID THE MANUFACTURER'S WARRANTY, AND HOLD THE CONTRACTOR LIABLE FOR ANY AND ALL LOSSES, COSTS, AND EXPENSES RELATED TO THE NON-COMFORMANCE OF THE MANUFACTURER'S SPECIFIED INSTRUCTION. THE WALL ACTING AS AN END PANEL MUST EXTEND NO LESS THAN 20" FROM THE INTERSECTING WALL ON WHICH HOOD IS MOUNTED AND MUST EXTEND NO LESS THAN 20" UNDER BOTTOM OF HOOD TO BE ELIGIBLE FOR REDUCED MINIMUM EXHAUST CFM LISTING.



SECTION VIEW - MODEL 3044BD-2 HOOD - #1 (KH-3 HOOD)

VERIFY FINISHED CEILING HEIGHT

CUSTOMER APPROVAL TO MANUFACTURE THIS HOOD MUST BE COMPLETED BEFORE ANY WORK BEGINS ON THIS HOOD. (SEE DRAWING FOR APPROVAL AS SHOWN)

APPROVED AS SHOWN REVISION # _____ REVERSE & RESEQUENCE

SIGNATURE _____ DATE _____

- ** Below Work to be performed by factory trained and TAB certified servicing agent: ****
- Verify that all components are installed correctly and are in accordance with as built drawings
 - All equipment to be commissioned per start-up procedures in O&M documents
 - Check fan rotation, belt tension, blower and motor rpm, amperage and adjust if necessary
 - Hood / Fans test and balance worksheet and provide to the Mechanical Engineer
 - Verify and adjust equipment to assure hood captures correctly and features perform as designed
 - Consult with contractors and answer their questions or direct them to the technical support line
 - Provide guidance on the proper function and maintenance of equipment to Owners or General Contractors
 - Complete Manufacturer's Start-up and Warranty form and send copy to Mechanical Engineer for their files

REVISIONS

NO.	DESCRIPTION	DATE

Arkansas Mechanical
PO Box 1942, Farmington, AR, 72730 PHONE: (501) 500-5450 FAX: (501) 710-6870 EMAIL: reg146@captivaire.com

Slm Chickens - Evans, GA - Small Hood
4311 Washington Rd,
Evans, GA, 30809

DATE: 3/8/2021
DWG.#: 4783687
DRAWN BY: JJF_CAS146
SCALE: 3/4" = 1'-0"
MASTER DRAWING
SHEET NO. 1

ARCHITECT: **JSD**
JOHN S. ODOM, ARCHITECT
P.O. BOX 410894
SAINT LOUIS, MISSOURI 63141
PH: 1-417-343-2852
WWW.JOHNSODOM.COM
E-MAIL: JOHN@JOHNSODOM.COM

CONTACT: JOHN S. ODOM

PROJECT: TENANT MODIFICATIONS FOR:
Slm Chickens
4311 WASHINGTON ROAD
EVANS, GEORGIA 30809

REGISTERED PROFESSIONAL ARCHITECT
No. 25568
W. J. Odom
MAY 1988

SPECIAL NOTICES:
I, the undersigned, hereby certify that I am a duly licensed and registered professional architect in the State of Georgia, and that I am the author of the drawings hereon, or that I am a duly licensed and registered professional architect in the State of Georgia, and that I am the author of the drawings hereon, or that I am a duly licensed and registered professional architect in the State of Georgia, and that I am the author of the drawings hereon.

Drawn: J.J.F. Date: 3/8/2021
H1.0
HOOD SHOP DRAWINGS