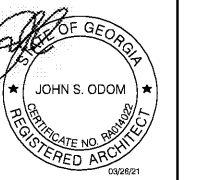
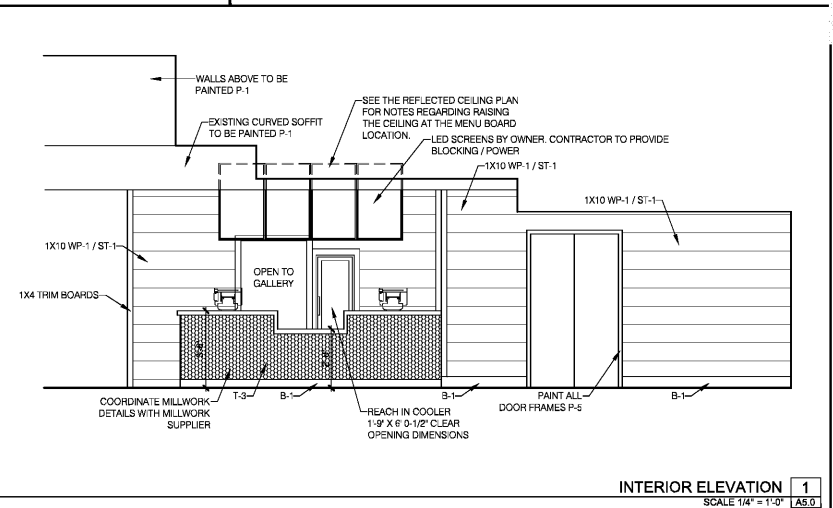
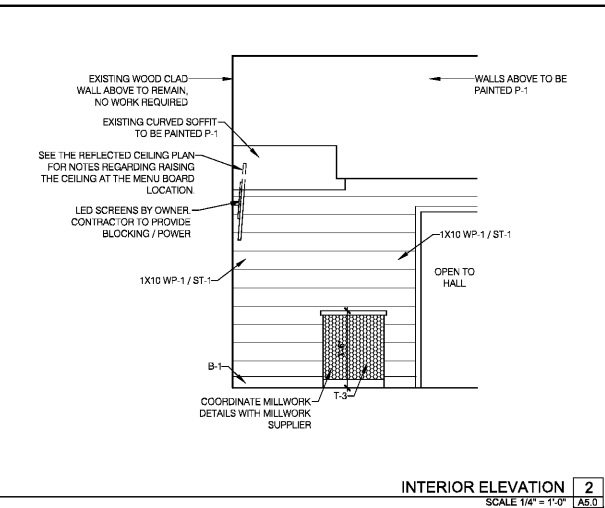
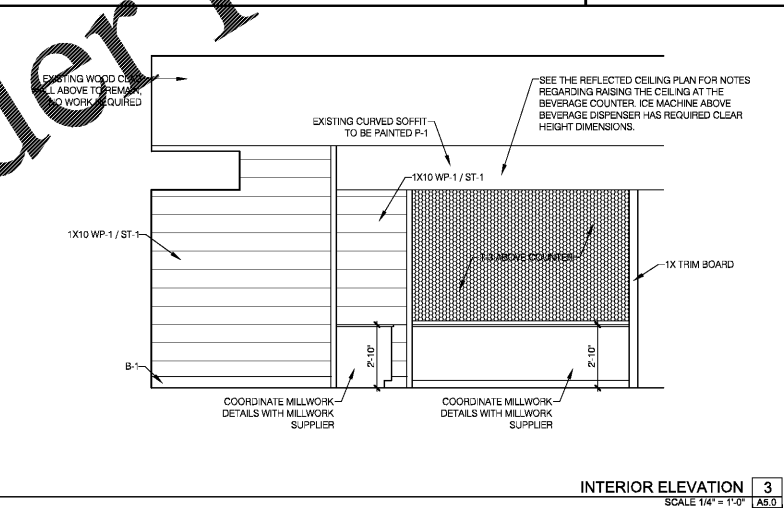
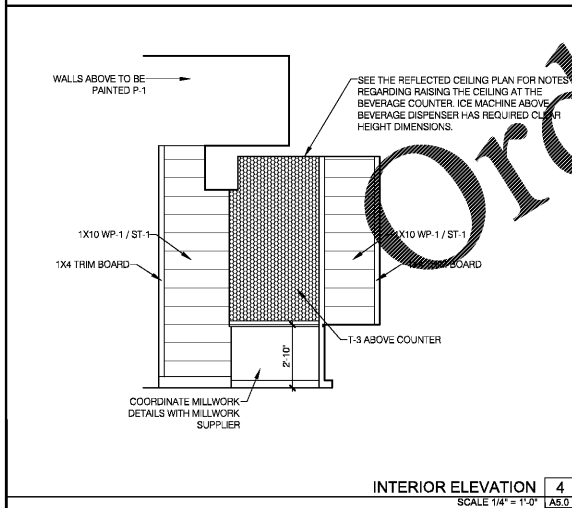
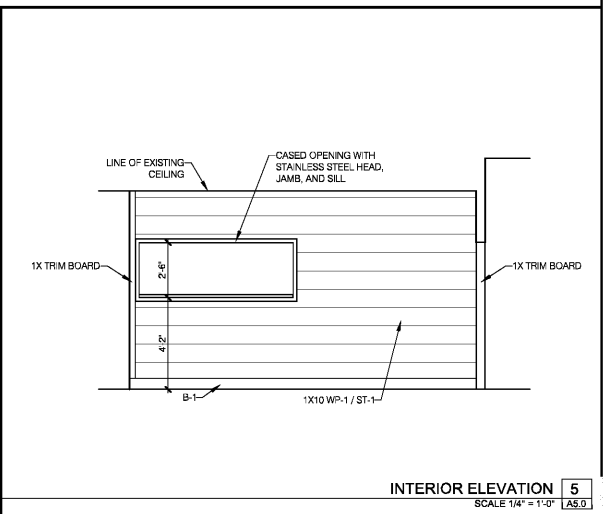
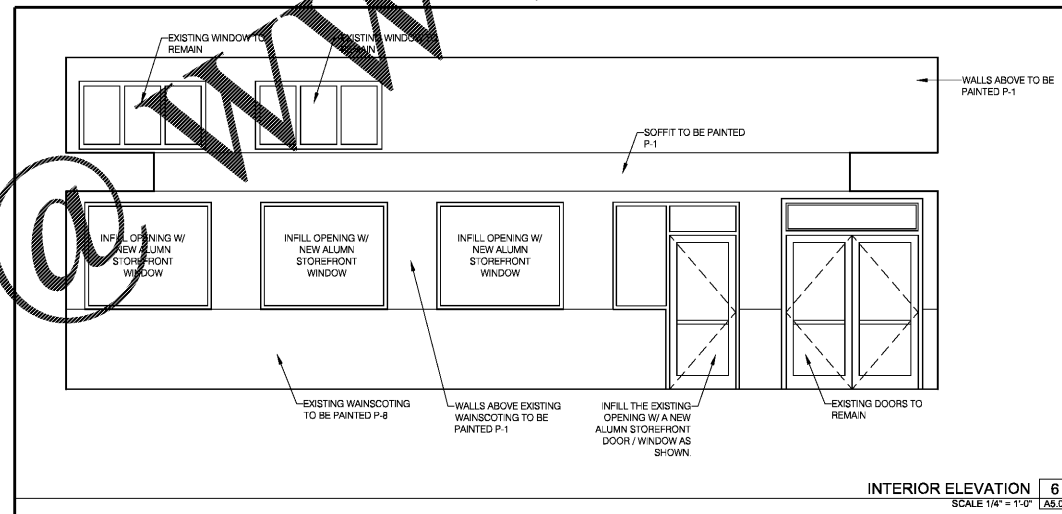


WWW.LDILine.com

Order Plans



JOHN S. ODOM, ARCHITECT
 GEORGIA LICENSE NUMBER:
 RA014022
 THIS SEAL IS FOR ARCHITECTURAL INFORMATION ONLY

SPECIAL NOTICES
 In the event the client consents to allow, authorize or approve of changes to any plans, specifications or other construction documents, and these changes are not approved in writing by the design professional, the client agrees to release the design professional from any liability arising from the contractor, use or neglect of such changes. In addition, the client agrees to the fullest extent permitted by law to indemnify and hold the design professional harmless from any claims, damages, costs of defense, including their own or others. Copyright © 2017 by John S. Odom, Inc. All rights reserved. No part of this drawing may be reproduced by photocopy or by any other means, or stored, transmitted, or retrieved in any way, computer or other systems without the prior written permission of the Architect.