

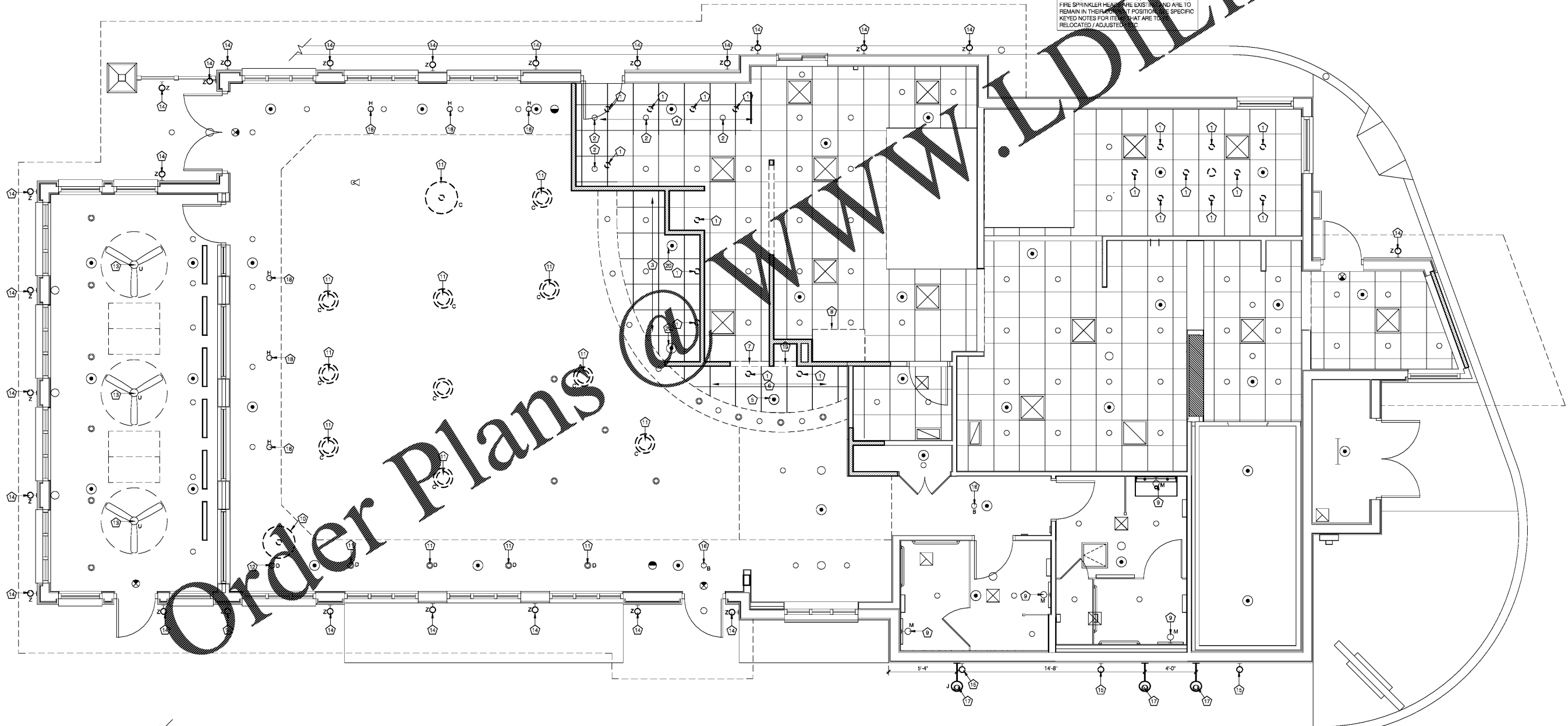
LIGHTING FIXTURE SCHEDULE								
TYPE MARK	DESCRIPTION	MANUFACTURER	MODEL	MOUNTING	VOLTAGE	WATTAGE	LAMP TYPE	MOUNTING AFF
B	PENDANT/CHANDELIER	MWC	SC1ADN1834	CORD PENDANT	120 V	200 W	INCANDESCENT	FIXED LUMINAIRE
C	CALVIN PENDANT	TMS LIGHTING	SC30250-IN-C/S9845S	CORD PENDANT	120 V	9 W	LED	VERIFY
D	PENDANT	VERIFY	VERIFY	SURFACE	120 V	VERIFY	N/A	VERIFY W/ CORPORATE SLIM CHICKENS REP ON FIXTURE TYPE
H	LILL PENDANT	TMS LIGHTING	SC30250-IN-H-F10/S9845S	CORD PENDANT	120 V	9 W	LED	VERIFY
J	EXTERIOR GOOSENECK	TMS LIGHTING	SC30250-LD-J-F10	WALL MOUNT	120 V	20 W	LED	REFER TO A2.1 AND A2.2 FOR MOUNTING HEIGHT
M	VANITY LIGHT	TMS LIGHTING	CUS30250-IN-M-S/S9580	WALL	120 V	9 W	LED	COORDINATE WITH INSTALLATION OF MIRROR
U	CEILING FAN	VERIFY	VERIFY	SURFACE	120 V	VERIFY	N/A	VERIFY W/ CORPORATE SLIM CHICKENS REP ON FIXTURE TYPE
Z	WALL SCONCE	ACCESS LIGHTING	20290-WH/FST	SURFACE	120 V	80W	LED	FIXTURE COLOR TO BE WHITE

**MANUFACTURE NOTES:**  
 ALL LIGHT FIXTURES WILL BE PROVIDED BY THE SLIM CHICKENS NATIONAL ACCOUNT PROVIDER MALMSTROM WHITE. CONTACT CHRIS JENNINGS AT THE MALMSTROM WHITE COMPANY (501-224-2775 EXT 213) FOR PRICING. ADDITIONAL CONTACT INFO IS VIA CELL PHONE (501-993-8778) OR VIA EMAIL (CHRIS@MW.CO.COM). LEAD TIME FOR LIGHTS CAN BE UP TO 8 WEEKS. NO EXCEPTIONS WILL BE ALLOWED UNLESS SPECIFICALLY AUTHORIZED BY SLIM CHICKENS CORPORATE. THE GENERAL CONTRACTOR WILL BE RESPONSIBLE FOR SUPPLYING THE LIGHTING AND GEAR PACKAGE AND INSTALLATION TO BE BY THE ELECTRICAL CONTRACTOR.

**CEILING PLAN KEYED NOTES**

- 1 THE EXISTING CAN LIGHT FIXTURE AT THIS LOCATION IS TO BE REMOVED. SEE PLAN FOR LOCATION OF RELOCATED CAN LIGHT FIXTURES.
- 2 LOCATION OF RELOCATED CAN LIGHT FIXTURE.
- 3 THE CEILING TILE / GRID AT THIS LOCATION IS TO BE RAISED TO A 10'-0" CEILING HEIGHT. IN THE EVENT THE EXISTING ACCOUSTICAL CEILING TILE / GRID IS CURRENTLY HELD TIGHT TO THE EXISTING DUCT WORK ABOVE, THE CONTRACTOR IS TO CONTACT THE ARCHITECT FOR FURTHER INSTRUCTION. INSTALL NEW GYP BOARD ON THE SOFFIT FACE AS NEEDED ONCE THE CEILING IS RAISED. CEILING TILE AT THIS LOCATION IS TO BE VINYL FACED / CLEANABLE SURFACE.
- 4 CONTRACTOR TO EXTEND THE ACCOUSTICAL CEILING GRID / TILE TO THIS LOCATION ONCE THE GYP BOARD CEILING SOFFIT HAS BEEN REMOVED.
- 5 NEW FIRE SPRINKLER HEAD AT THIS LOCATION
- 6 THE CEILING TILE / GRID AT THIS LOCATION IS TO BE RAISED TO THE UNDERSIDE OF THE EXISTING DUCT WORK ABOVE (FIELD VERIFY EXACT DIMENSION OR WHEN 10'-0" CEILING HEIGHT IS ACHIEVED. IN THE EVENT THE EXISTING ACCOUSTICAL CEILING TILE / GRID IS CURRENTLY HELD TIGHT TO THE EXISTING DUCT WORK ABOVE, THE CONTRACTOR IS TO CONTACT THE ARCHITECT FOR FURTHER INSTRUCTION. INSTALL NEW GYP BOARD ON THE SOFFIT FACE AS NEEDED ONCE THE CEILING IS RAISED.)
- 7 UNDERSIDE OF GYP BOARD SOFFIT AT THIS LOCATION IS 8'-8" A.F.F.
- 8 NEW COOKING HOOD AT THIS LOCATION. PATCH IN CEILING GRID / TILE AS NEEDED ONCE THE NEW HOOD IS INSTALLED.
- 9 ELECTRICIAN TO CHANGE OUT BATHROOM FIXTURE AT THIS LOCATION. SEE THE ELECTRICAL SCHEDULE FOR FIXTURE TYPE.
- 10 REMOVE THE EXISTING PENDANT LIGHT FIXTURE FROM THIS LOCATION. PROVIDE COVER PLATE IN CEILING (PAINT TO MATCH ADJACENT SURFACE).
- 11 REMOVE & REPLACE THE EXISTING PENDANT FROM THIS LOCATION. SEE THE LIGHT FIXTURE SCHEDULE FOR NEW PENDANT TO BE INSTALLED AT THIS LOCATION.
- 12 ADD A NEW PENDANT AT THIS LOCATION. SEE THE LIGHT FIXTURE SCHEDULE FOR NEW PENDANT TO BE INSTALLED AT THIS LOCATION. PENDANT TO BE CENTERED ON THE TABLE BELOW.
- 13 REMOVE & REPLACE THE EXISTING CEILING FAN FROM THIS LOCATION. SEE THE LIGHT FIXTURE SCHEDULE FOR NEW FAN TO BE INSTALLED AT THIS LOCATION.
- 14 THE EXTERIOR WALL SCONCE AT THIS LOCATION IS TO BE REMOVED / REPLACED WITH A NEW EXTERIOR WALL SCONCE. SEE THE LIGHT FIXTURE SCHEDULE FOR LIGHT FIXTURE SPECIFICATION. THE ELECTRICIAN IS TO TAKE AN ACCURATE COUNT OF LIGHT FIXTURES PRIOR TO ORDERING.
- 15 REMOVE THE EXISTING WALL SCONCES FROM THIS LOCATION. SEE THE REVISIONS EXTERIOR ELEVATIONS FOR NEW SCONCE LOCATIONS ON THE EXTERIOR WALL.
- 16 THE EXISTING CAN LIGHT FIXTURE IS TO BE REMOVED AND REPLACED WITH A PENDANT LIGHT FIXTURE. USE EXISTING EXTERIOR WALL SCONCE CIRCUIT FOR NEW WALL SCONCE LOCATION.
- 17 NEW EXTERIOR WALL SCONCE AT THIS LOCATION. USE EXISTING EXTERIOR WALL SCONCE CIRCUIT FOR NEW WALL SCONCE LOCATION. COORDINATE EXACT LOCATION W/ TABLES TO BE LOCATED BELOW. CENTER PENDANT OVER TABLE.
- 18 VERIFY HEIGHT OF DROP HEADER AT THIS LOCATION WITH EQUIPMENT SUPPLIER
- 19 CONTRACTOR TO RAISE EXISTING FIRE SPRINKLER HEAD AT THIS LOCATION


NOTE: UNLESS OTHERWISE NOTED ON THIS PLAN, THE EXISTING LIGHT FIXTURES / REGISTERS / FIRE SPRINKLER HEADS ARE EXISTING AND ARE TO REMAIN IN THEIR CURRENT POSITIONS. SEE SPECIFIC KEYED NOTES FOR ITEMS THAT ARE TO BE RELOCATED / ADJUSTED.



Order Plans

**ARCHITECT:**  
  
 JOHN S. ODOM, ARCHITECT  
 P.O. BOX 410384  
 SAINT LOUIS, MISSOURI 63141  
 PH: 1-417-243-2852  
 WWW.JOHNSODOM.COM  
 E-MAIL: JOHN@JOHNSODOM.COM  
 CONTACT: JOHN S. ODOM

**PROJECT:**  
 TENANT MODIFICATIONS FOR:  
  
 4311 WASHINGTON ROAD  
 EVANS, GEORGIA 30809

  
 JOHN S. ODOM, ARCHITECT  
 GEORGIA LICENSE NUMBER: RA014022  
 THIS SEAL IS FOR ARCHITECTURAL INFORMATION ONLY

**SPECIAL NOTICES**  
 In the event the client consents to, allows, authorizes or approves or engages in any plans, specifications or other construction documents, and these changes are not approved in writing by the design professional, the client agrees to release the design professional from any liability arising from the construction, use or result of such changes. In addition, the client agrees to the limited liability permitted by law to the extent of the design professional's negligence, and to the extent of the design professional's negligence, the client agrees to hold the design professional harmless from any and all claims of damages, including their own damages. Copyright © 2019 by John S. Odom, Inc. All rights reserved. No part of this drawing may be reproduced by photocopy or by any other means, or stored, transmitted, or retrieved in any computer or other system without the prior written permission of the Architect.

Drawn: JSD Date: 03/28/21  
 Scale: 1/4" = 1'-0"

**A2.0**  
 REFLECTED CEILING PLAN