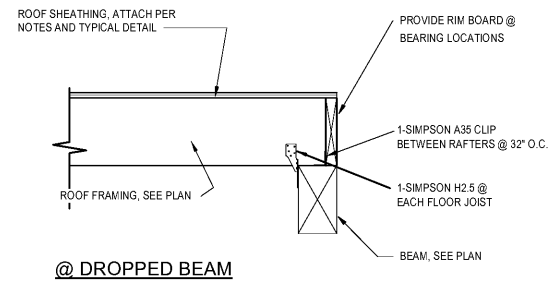
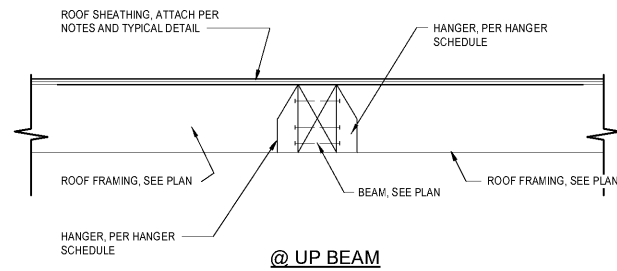


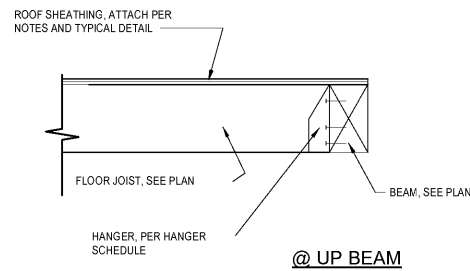
@ DROPPED BEAM



@ DROPPED BEAM

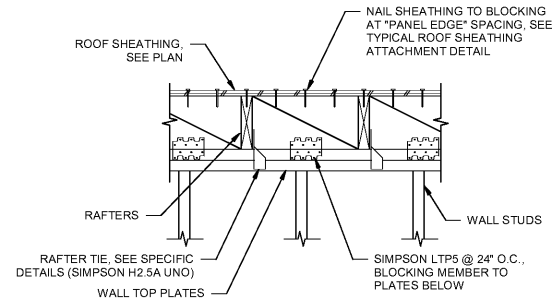


@ UP BEAM

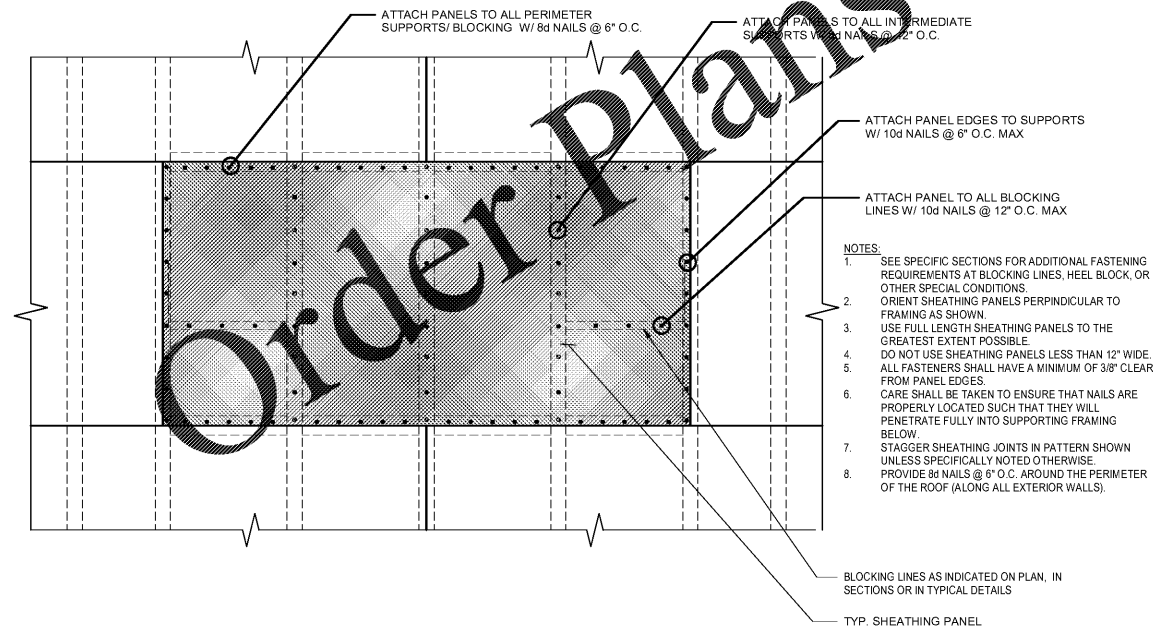


@ UP BEAM

1 TYP. RAFTERS TO BEAM CONN'S
S232 SCALE: 1" = 1'-0"



2 TYP. RAFTER BLOCKING AT SHEAR WALLS
S232 SCALE: 1" = 1'-0"



- NOTES:
- SEE SPECIFIC SECTIONS FOR ADDITIONAL FASTENING REQUIREMENTS AT BLOCKING LINES, HEEL BLOCK, OR OTHER SPECIAL CONDITIONS. ORIENT SHEATHING PANELS PERPENDICULAR TO FRAMING AS SHOWN.
 - USE FULL LENGTH SHEATHING PANELS TO THE GREATEST EXTENT POSSIBLE.
 - DO NOT USE SHEATHING PANELS LESS THAN 12" WIDE.
 - ALL FASTENERS SHALL HAVE A MINIMUM OF 3/8" CLEAR FROM PANEL EDGES.
 - CARE SHALL BE TAKEN TO ENSURE THAT NAILS ARE PROPERLY LOCATED SUCH THAT THEY WILL PENETRATE FULLY INTO SUPPORTING FRAMING BELOW.
 - STAGGER SHEATHING JOINTS IN PATTERN SHOWN UNLESS SPECIFICALLY NOTED OTHERWISE.
 - PROVIDE 8d NAILS @ 6" O.C. AROUND THE PERIMETER OF THE ROOF (ALONG ALL EXTERIOR WALLS).

BLOCKING LINES AS INDICATED ON PLAN, IN SECTIONS OR IN TYPICAL DETAILS
TYP. SHEATHING PANEL

5 TYP. ROOF SHEATHING ATTACHMENT
S232 SCALE: 3/4" = 1'-0"

SIMPSON HANGER SCHEDULE (U.N.O.)

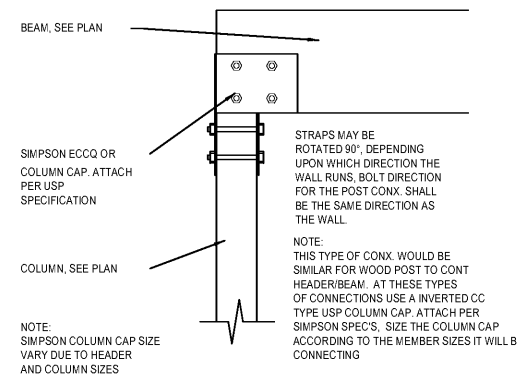
MEMBER SIZE	SIMPSON HANGER/ CONNECTOR FOR 2x'S OR MULTI MEMBER 2x'S			NOTES
	FACE MOUNTED	TOP FLANGE	SLOPE/ SCREWED HANGER	
2x4	LUS24	HU24TF		1, 2
2-2x4S	LUS24-2	HU24-2TF		1, 2
3-2x4S				1, 2
2x6	LUS26	LB26	LSU26	1, 2
2-2x6S	LUS26-2	HUS26-2TF		1, 2
3-2x6S	HU26-3 (MAX)			1, 2
2x8	LUS28	LB28	LSSU28	1, 2
2-2x8S	HU28-2 (MAX)	HUS28-2TF		1, 2
3-2x8S	LUS28-3			
2x10	LUS210	LB210	LSSU210	1, 2
2-2x10S	HU210-2 (MAX)	HUS210-2TF	LSSU210-2	1, 2
3-2x10S	HU210-3 (MAX)	HUS210-3TF		1, 2
2x12	LUS212	LB212	LSSU212	1, 2
2-2x12S	HU212-2 (MAX)	HUS212-2TF	LSSU212-2	1, 2
3-2x12S	HU212-3 (MAX)	HUS212-3TF		1, 2

1. SIMPSON HANGER SCHEDULE SHALL ONLY BE USED, WHERE A SPECIFIC HANGER CONNECTION IS NOT CALLED OUT IN THE PLANS OR DETAILS.
2. CONCEALED FLANGE HANGERS MAY BE USED WHERE NEEDED, TO ALLOW FOR EASIER INSTALLATION, G.C. TO COORDINATE.
3. SEE DETAILS FOR SPECIFIC CONNECTIONS G.C. TO COORDINATE.

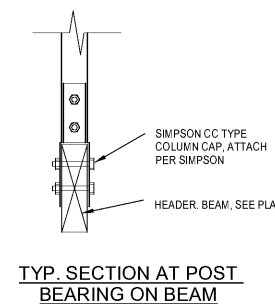
SIMPSON HANGER SCHEDULE (U.N.O.)

MEMBER SIZE	SIMPSON HANGER/ CONNECTOR FOR LVL BEAMS			NOTES
	FACE MOUNTED	TOP FLANGE		
1 3/4"x14" LVL	U14	BA181/14		1, 2
3 1/2"x14" LVL	HGUS414	HGLTV3.5/14		1, 2
1 3/4"x11.25" LVL	U14	BA181/11.25		1, 2
3 1/2"x11.25" LVL	HGUS412	HGLTV3.5/11.25		1, 2

1. SIMPSON HANGER SCHEDULE SHALL ONLY BE USED, WHERE A SPECIFIC HANGER CONNECTION IS NOT CALLED OUT IN THE PLANS OR DETAILS.
2. CONCEALED FLANGE HANGERS MAY BE USED WHERE NEEDED, TO ALLOW FOR EASIER INSTALLATION, G.C. TO COORDINATE.
3. SEE DETAILS FOR SPECIFIC CONNECTIONS G.C. TO COORDINATE.



6 TYP. GIRDER BEAM TO WOOD POST CONN
S232 SCALE: 1" = 1'-0"



7 TYP. SECTION AT POST BEARING ON BEAM
S232 SCALE: 1" = 1'-0"

dickinson
ARCHITECTS
Architecture Interior Design Planning
771 Broad Street Suite 200
Augusta, Georgia 30901
(706) 722-7488
mail@dickinsonarchitects.com
www.dickinsonarchitects.com

Member of the
American Institute of
Architects

THIS DRAWING IS THE PROPERTY OF DICKINSON ARCHITECTS, P.C., AND IS NOT TO BE REPRODUCED OR COPIED IN WHOLE OR IN PART OR USED FOR FURNISHING INFORMATION TO OTHERS OR FOR ANY OTHER PURPOSE DEEMED TO BE IN THE INTEREST OF DICKINSON ARCHITECTS, P.C., AND IS TO BE RETURNED UPON REQUEST.
DICKINSON ARCHITECTS, P.C.

PROJECT TITLE:
**SRP
BRANCH
BANK**

REVISIONS

REV #	DATE	APRVD BY	REVISION
1	03-19-21		ISSUED FOR PERMIT

Professional Engineer Seal: H. C. AM... No. 36808, 3/17/21

DA PROJECT NUMBER & NAME:
2020-0522
DRAWING TITLE:
**TYPICAL TIMBER
DETAILS**
DRAWING NO:
S232

CRANSTON
ENGINEERING
ENGINEERS - PLANNERS - SURVEYORS
452 Ellis Street, Augusta, Georgia 30901
Telephone 706-722-1588
CranstonEngineering.com