



**dickinson**  
ARCHITECTS  
Architecture Interior Design Planning  
771 Broad Street Suite 200  
Augusta, Georgia 30901  
(706) 722-7488  
mail@dickinsonarchitects.com  
www.dickinsonarchitects.com



Member of the  
American Institute of  
Architects


THIS DRAWING IS THE PROPERTY OF DICKINSON ARCHITECTS, P.C., AND IS NOT TO BE REPRODUCED OR COPIED IN WHOLE OR IN PART OR USED FOR FURNISHING INFORMATION TO OTHERS OR FOR ANY OTHER PURPOSE DEEMED TO BE IN THE INTEREST OF DICKINSON ARCHITECTS, P.C., AND IS TO BE RETURNED UPON REQUEST.  
DICKINSON ARCHITECTS, P.C.

PROJECT TITLE:

**SRP  
BRANCH  
BANK**

REVISIONS

REV #	DATE	APRVD BY	REVISION
1	03-19-21		ISSUED FOR PERMIT



Professional Engineer  
No. 36808  
3/17/21  
MICHAEL CHARLES BRIGGS

DA PROJECT NUMBER & NAME:  
2020-0522  
DRAWING TITLE:  
**FOUNDATION  
PLAN**  
DRAWING NO:  
**S111**

**FOUNDATION GENERAL NOTES**

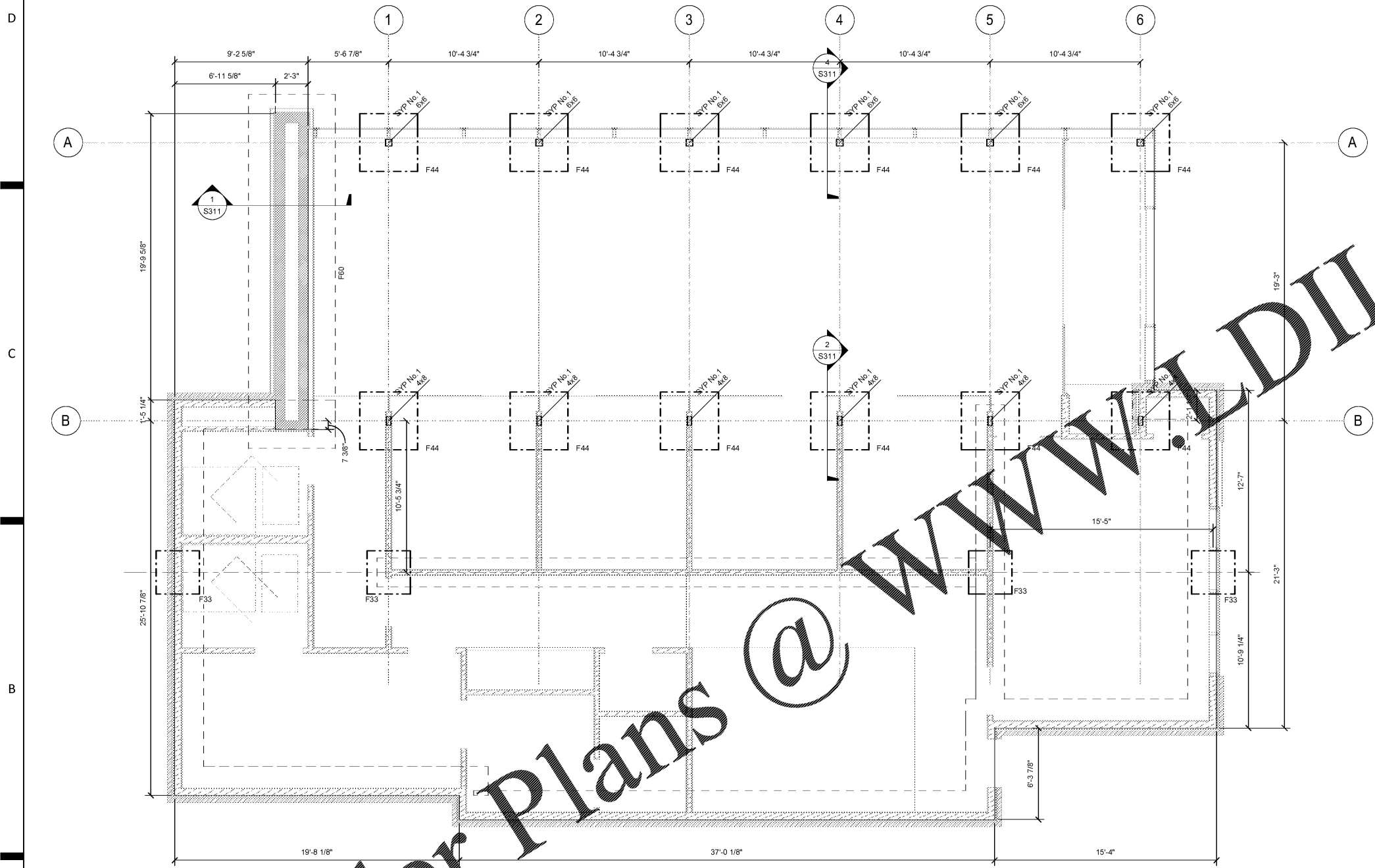
- TOP OF FOOTING = (-)1'-4" UNO
- SF=STEP FOOTING, SEE TYPICAL DETAIL 3/S211
- CENTER ALL SPREAD FOOTINGS BENEATH COLUMNS/PIERS/PILASTERS
- ALL STRIP FOOTING REINFORCING SHALL BE CONTINUOUS THROUGH SPREAD FOOTINGS
- PROVIDE CORNER BARS AT ALL STRIP FOOTING CHANGES IN DIRECTION
- EXTEND STRIP FOOTINGS A MINIMUM OF 8" PAST END OF WALL AT FOOTING TERMINATIONS

CONTINUOUS FOOTING SCHEDULE

FOOTING TYPE	WIDTH	THICKNESS	LONGITUDINAL REINFORCING	TRANSVERSE REINFORCING
F60	6'-0"	1'-0"	(7)-#5'S TOP & BOTT	#5'S @ 12" O.C. TOP & BOTT
F44	4'-0"	1'-4"	(3)-#5'S	#4'S @ 48" O.C.

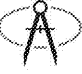
SPREAD FOOTING SCHEDULE

FOOTING TYPE	LENGTH	WIDTH	THICKNESS	BOTTOM REINFORCING	TOP REINFORCING
F33	3'-0"	3'-0"	1'-0"	(4)-#5'S EW	N/A
F44	4'-0"	4'-0"	1'-0"	(4)-#5'S EW	N/A



1 T/FOUNDATION  
S111 SCALE: 1/4" = 1'-0"

Order Plans @



**CRANSTON**  
ENGINEERING  
ENGINEERS - PLANNERS - SURVEYORS  
452 Ellis Street, Augusta, Georgia 30901  
Telephone 706-722-1588  
CranstonEngineering.com