

1 DEMOLITION SITE PLAN  
SCALE: 3/32" = 1'-0"

**DEMOLITION NOTES:**

- A. DEMO EXISTING STRUCTURE IN ITS ENTIRETY.
- B. DEMO CURB & GUTTER IN ITS ENTIRETY.
- C. DEMO SIDEWALK IN ITS ENTIRETY.
- D. REMOVE EXISTING CANOPY.
- E. REMOVE EXISTING PLANTERS.
- F. DEMO SITE LIGHTING.
- G. SAW CUT ASPHALT & DEMO ASPHALT INCLUDING BASE.
- H. FLAG POLE TO BE SALVAGED BY OWNER.

**ITEMS TO BE SALVAGED BY OWNER**

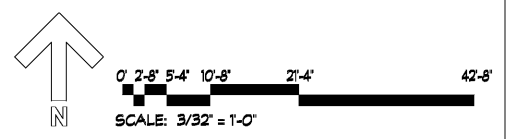
- 1. TRUSPOIL
- 2. OUTDOOR CONDITIONING UNITS
- 3. ATM
- 4. SECURITY EQUIPMENT

**DEMOLITION LEGEND:**

--- ITEM TO BE REMOVED

**GENERAL DEMOLITION NOTES:**

1. GC TO PROTECT ALL ADJACENT SURFACES TO REMAIN FROM DAMAGE DURING CONSTRUCTION. GC TO REPAIR/REPLACE ANY ADJACENT SURFACES DAMAGED DURING CONSTRUCTION TO MATCH ORIGINAL CONDITIONS.
2. GC TO FIELD VERIFY CONDITIONS PRIOR TO START OF CONSTRUCTION.
3. EXISTING CONDITIONS & DEMOLITION NOTES BASED ON FIELD SURVEY. IF GC DISCOVERS EXISTING CONDITIONS VARY FROM THOSE SHOWN, CONTACT OWNER OR ARCHITECT IMMEDIATELY.
4. COORDINATE DEMOLITION & SALVAGE WITH REQUIREMENTS OF SPECIFICATION SECTION 02 4100.
5. COORDINATE DEMOLITION WITH ELECTRICAL, MECHANICAL, PLUMBING, CIVIL, & STRUCTURAL DRAWINGS.
6. ALL DEMOLITION WORK SHALL COMPLY WITH THE REQUIREMENTS OF THE 2016 EDITION OF NFPA 241, STANDARD FOR SAFEGUARDING CONSTRUCTION, ALTERATION, & DEMOLITION OPERATIONS.



**dickinson**  
ARCHITECTS  
Architecture|Interior Design|Planning  
771 Broad Street Suite 200  
Augusta, Georgia 30901  
(706) 722-7488  
mail@dickinsonarchitects.com  
www.dickinsonarchitects.com

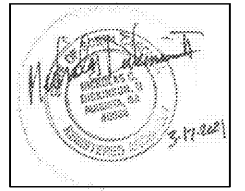
Member of the  
American Institute of  
Architects

THIS DRAWING IS THE PROPERTY OF DICKINSON ARCHITECTS, P.C. AND IS NOT TO BE REPRODUCED OR COPIED IN WHOLE OR IN PART OR USED FOR FURNISHING INFORMATION TO OTHERS OR FOR OTHER PURPOSES UNLESS IN THE INTEREST OF DICKINSON ARCHITECTS, P.C., AND IS TO BE RETURNED UPON REQUEST. DICKINSON ARCHITECTS, P.C.

PROJECT TITLE:  
**SRP  
BRANCH  
BANK**

REVISIONS

REV #	DATE	APRVD BY	REVISION



DA PROJECT NUMBER & NAME:  
2092  
DRAWING TITLE:  
**DEMOLITION SITE  
PLAN**

DRAWING NO:  
**D100**