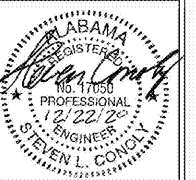




Facilities Management  
 1161 West Samford Avenue  
 Auburn University, AL 36849  
 Phone: (334) 844-4810  
 Fax: (334) 844-9458  
*Safety is our first priority.  
 Think Safety. Act Safely.*

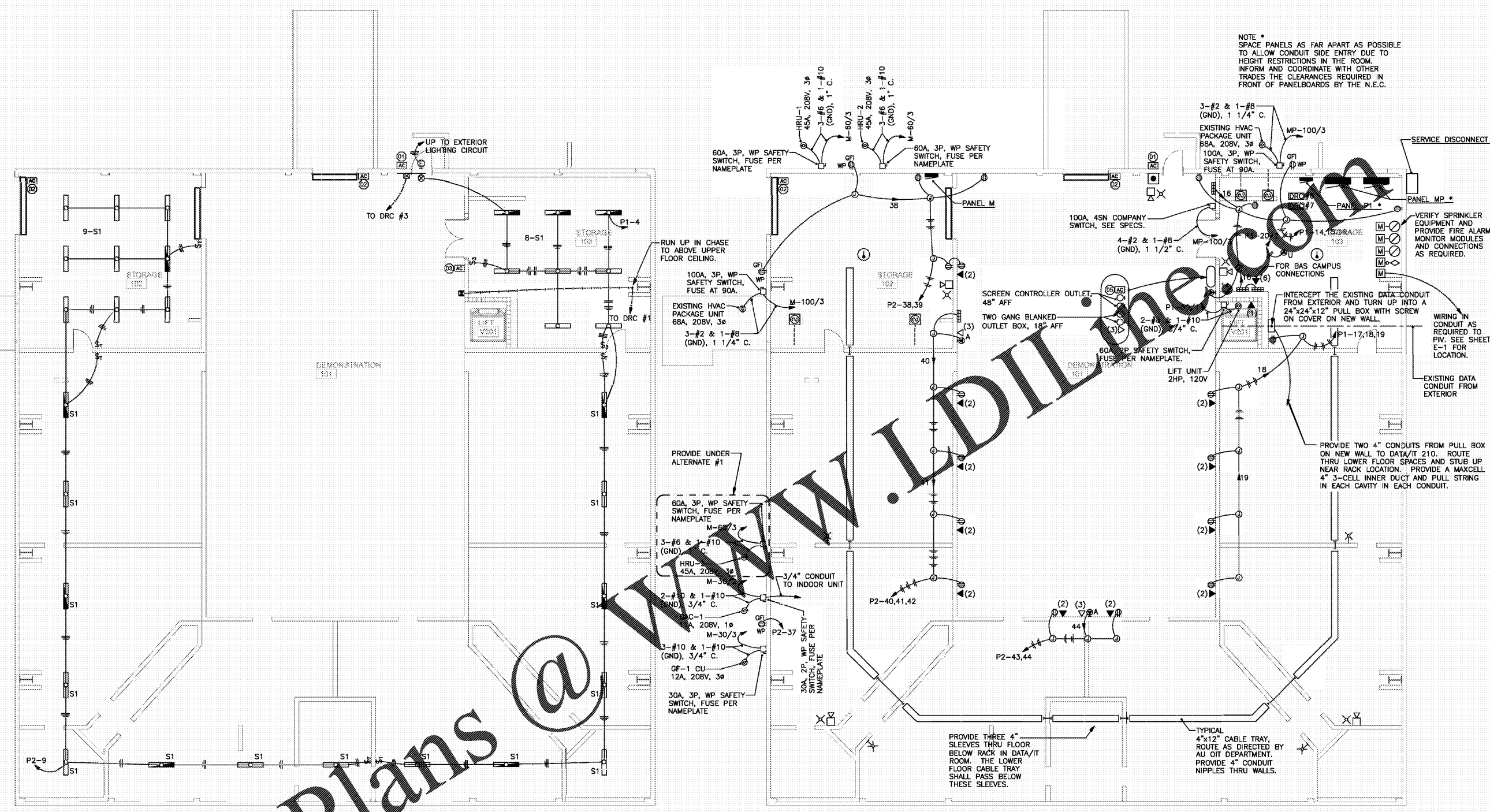
No.	Revision	Date



JMR + H  
 Architecture, PC  
 4400 Montgomery Avenue  
 Montgomery, AL 36104  
 Phone: (334) 420-5672  
 Fax: (334) 420-5662  
 JMR-H Project Number: 19-968  
 Drawn By: DT

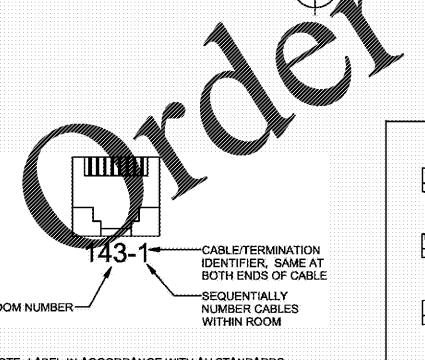
Auburn University Building  
 Ham Wilson Arena Renovations  
 Project Number 19-451

SHEET TITLE:  
**LOWER FLOOR ELECTRICAL PLANS**  
 DRAWN BY:  
 SLC  
 CHECKED BY:  
 SLC  
 DATE:  
 JANUARY 21, 2021  
 FILE NUMBER:  
 -  
 PROJECT NUMBER:  
 19-451  
 SHEET NUMBER:  
**E-6**

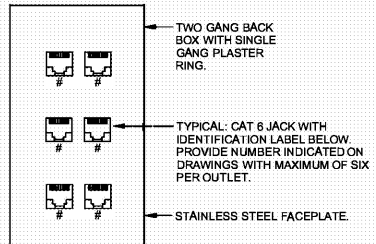


LOWER FLOOR LIGHTING PLAN  
 SCALE: 1/8" = 1'-0"

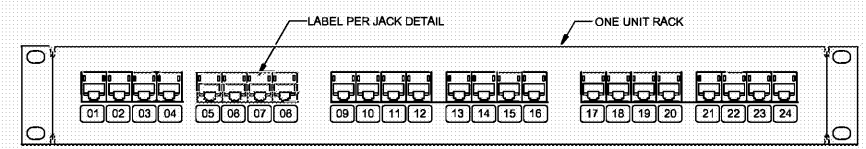
LOWER FLOOR POWER & AUXILIARY SYSTEMS PLAN  
 SCALE: 1/8" = 1'-0"



JACK DETAIL  
 NO SCALE



OUTLET DETAIL  
 NO SCALE



PATCH PANEL DETAIL  
 NO SCALE

**AUXILIARY SYSTEMS NOTES (THIS SHEET)**

- COORDINATE FINAL LOCATIONS OF ALL WALL AND FLOOR OUTLETS WITH ARCHITECT PRIOR TO ROUGH-IN.
- FROM EACH DATA (WALL) OUTLET ON LOWER FLOOR RUN A 1" CONDUIT AND TERMINATE AT CABLE TRAY. PROVIDE PLASTIC BUSHING ON EACH END. SEE SPEC SECTION 27 0000 FOR CABLE TRAY REQUIREMENTS. PROVIDE CAT 6 BLUE RJ45 JACKS AS INDICATED IN PARENTHESIS (#) IN THE OUTLET. PROVIDE A BLUE CAT 6 CABLE FROM EACH JACK AND RUN IN CONDUIT AND CABLE TRAY TO PATCH PANEL IN RACK IN DATA/IT 210. PROVIDE 6" SLACK CABLE IN OUTLET BOX AND 20' SLACK CABLE COILED NEATLY IN LOWER LEVEL BELOW DATA/IT 210.
- FROM EACH LECTURN WALL OUTLET ON LOWER FLOOR RUN TWO 1" CONDUITS AND TERMINATE WITH PLASTIC BUSHINGS AT THE CABLE TRAY. PROVIDE CAT 6 BLUE RJ45 JACKS AS INDICATED IN PARENTHESIS (#) IN THE OUTLET. PROVIDE A BLUE CAT 6 CABLE FROM EACH JACK AND RUN IN ONE OF THE CONDUITS AND CABLE HOOK SYSTEM TO PATCH PANEL IN RACK IN DATA/IT 210.
- AU OIT DEPARTMENT WILL FURNISH THE RACK IN DATA/IT 210. CONTRACTOR TO PROVIDE PATCH PANELS WITH KEYSTONE JACKS AND CABLE MANAGEMENT. CONTRACTOR TO INSTALL THE RACK, PATCH PANELS AND THE CABLE MANAGEMENT SYSTEM. RACK LOCATION IN THE ROOM AND PATCH PANEL LOCATIONS ON THE RACK TO BE PLACED AS DIRECTED BY AU OIT. ALL CABLES SHALL TERMINATE ON JACKS IN OUTLETS AND ON PATCH PANEL AND BE TESTED WITH TEST RESULTS PRINTED OUT AND PROVIDED TO AU OIT. CONTRACTOR SHALL PROVIDE TO AU OIT PROOF THAT THEIR CAT 6 TESTER HAS A CURRENT CERTIFICATE OF CALIBRATION FROM THE MANUFACTURER TO INSURE PROPER CAT 6 STANDARDS TESTING COMPLIANCE.