

Facilities Management  
 1161 West Samford Avenue  
 Auburn University, AL 36849  
 Phone: (334) 844-4810  
 Fax: (334) 844-9458  
 Safety is our first priority.  
 Think Safety. Act Safely.

No.	Revision	Date



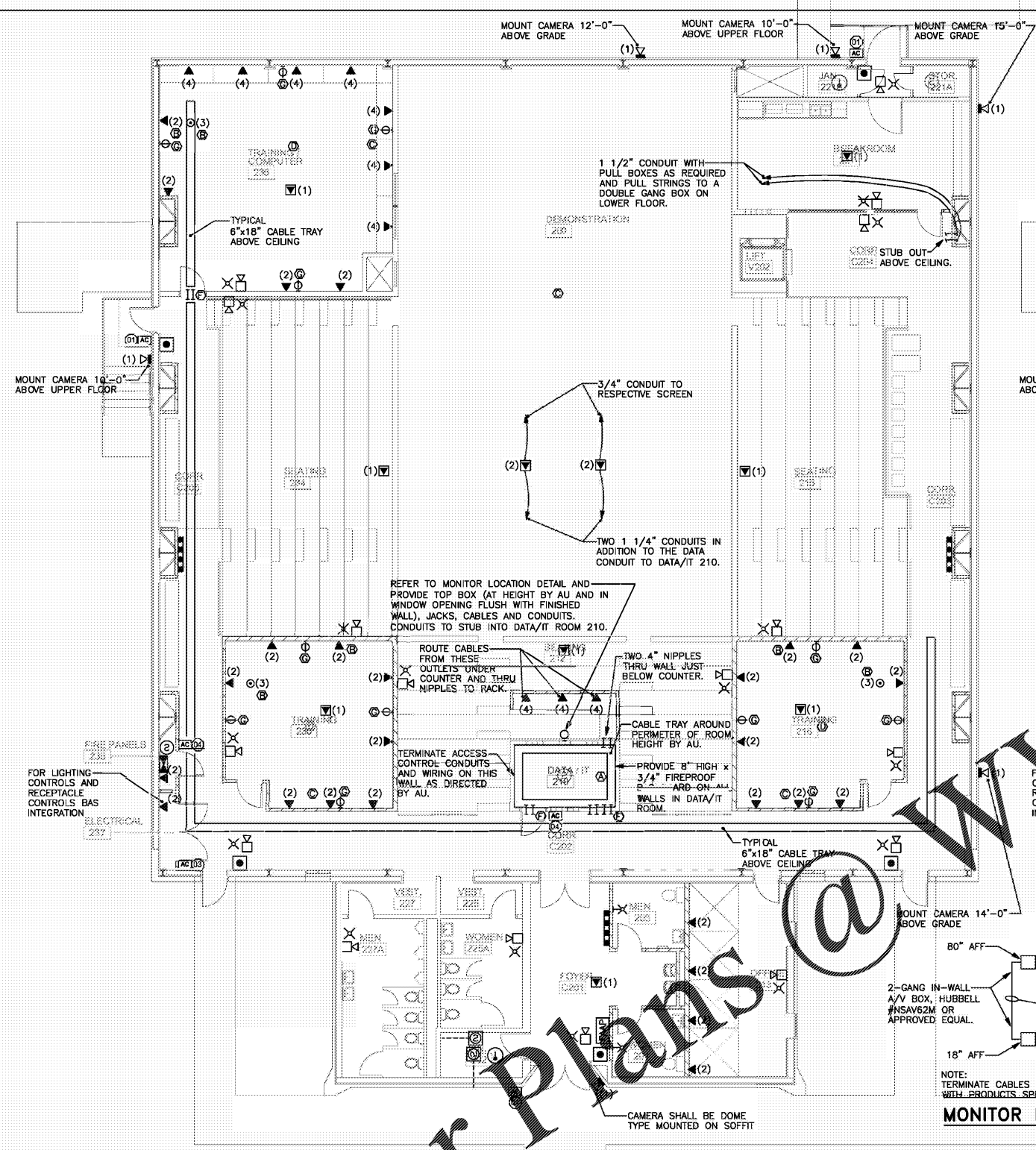
JMR+H  
 Architecture, P.C.  
 446 Greiner Avenue  
 Montgomery, AL 36104  
 Phone: (334) 426-5672  
 Fax: (334) 426-5682  
 JMR-H Project Number: 19-968  
 Drawn By: DT

Auburn University Building  
 Ham Wilson Arena Renovations  
 Project Number 19-451

SHEET TITLE:  
**AUXILIARY SYSTEMS PLANS**

DRAWN BY:  
 SLC  
 CHECKED BY:  
 SLC  
 DATE:  
 JANUARY 21, 2021  
 FILE NUMBER:  
 -  
 PROJECT NUMBER:  
 19-451  
 SHEET NUMBER:

E-5



**MONITOR LOCATION DETAIL**



**REFERENCED NOTES**

- (A) MOUNT DATA RACK (FURNISHED BY AU OIT) AND GROUND BAR (SEE DETAIL) ON THIS WALL AT LOCATION DIRECTED BY AU OIT.
- (B) FROM THIS DATA WALL OUTLET PROVIDE AN ADDITIONAL 1 1/4" CONDUIT UP IN WALL AND STUB OUT AT AN ACCESSIBLE LOCATION ABOVE THE CEILING.
- (C) RUN A 1" CONDUIT FROM THIS LOCATION ABOVE THE CEILING AND TERMINATE AT CABLE TRAY. PROVIDE PLASTIC BUSHING ON BOTH ENDS. CONDUIT SHALL BE CONNECTED TO CABLE TRAY. PROVIDE A GREEN CAT 6 CABLE IN CONDUIT AND CABLE TRAY TO PATCH PANEL IN RACK IN DATA/IT 210. PROVIDE 10' OF SLACK CABLE ABOVE THE CEILING AND TERMINATE ON A CAT 6 RJ45 MALE JACK. TERMINATE OTHER END OF EACH CABLE ON A DEDICATED PATCH PANEL (FOR A/V SYSTEM).
- (D) RUN A 1 1/4" CONDUIT FROM THIS LOCATION ABOVE THE CEILING AND TERMINATE WITH PLASTIC BUSHING AT CABLE TRAY. CONDUIT SHALL BE CONNECTED TO CABLE TRAY. PROVIDE FOUR GREEN CAT 6 CABLES IN CONDUIT AND CABLE TRAY TO PATCH PANEL IN RACK IN DATA/IT 210. PROVIDE 10' OF SLACK CABLES ABOVE THE CEILING AND TERMINATE ON CAT 6 RJ45 MALE JACKS. TERMINATE OTHER END OF EACH CABLE ON A DEDICATED PATCH PANEL (FOR A/V SYSTEM).
- (E) PROVIDE FOUR 4" SLEEVES THRU THIS WALL ABOVE THE CEILING. SEE SPEC SECTION 27 0000.
- (F) PROVIDE TWO 4" SLEEVES THRU THIS WALL ABOVE THE CEILING. SEE SPEC SECTION 27 0000.
- (G) SEE MONITOR LOCATION DETAIL FOR WORK AT THIS LOCATION.

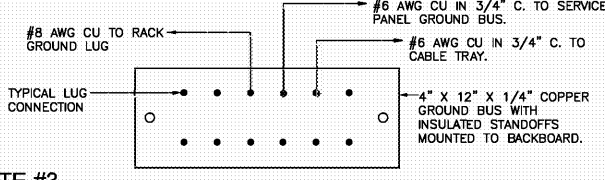
**AUXILIARY SYSTEMS NOTES (THIS SHEET)**

- 1. COORDINATE FINAL LOCATIONS OF ALL WALL AND FLOOR OUTLETS WITH ARCHITECT PRIOR TO ROUGH-IN.
- 2. FROM EACH DATA (WALL, CEILING AND FLOOR) OUTLET ON UPPER FLOOR RUN A 1" CONDUIT UP IN WALL AND ABOVE THE CEILING AND TERMINATE WITH PLASTIC BUSHING AT CABLE TRAY. CONDUIT SHALL BE CONNECTED TO CABLE TRAY. PROVIDE CAT 6 BLUE RJ45 JACKS AS INDICATED IN PARENTHESIS (#) IN THE OUTLET. PROVIDE A BLUE CAT 6 CABLE FROM EACH JACK AND RUN IN CONDUIT AND CABLE TRAY TO PATCH PANEL IN RACK IN DATA/IT 210. PROVIDE 6" SLACK CABLE IN OUTLET BOX AND 20' SLACK CABLE COILED NEATLY IN CABLE TRAY IN DATA/IT 210.
- 3. FROM EACH CAMERA RUN A 1" CONDUIT CONCEALED AND TERMINATE WITH PLASTIC BUSHING AT CABLE TRAY. CONDUIT SHALL BE CONNECTED TO CABLE TRAY. PROVIDE A YELLOW CAT 6 CABLE FROM CAMERA AND RUN IN CONDUIT AND CABLE TRAY TO CAMERA SYSTEM SWITCH IN RACK IN DATA/IT 210. PROVIDE 12" OF SLACK CABLE IN CAMERA OUTLET BOX AND TERMINATE ON THE CAMERA. TERMINATE OTHER END OF EACH CABLE ON THE DEDICATED SWITCH FOR CAMERA SYSTEM.
- 4. AU OIT DEPARTMENT WILL FURNISH THE RACK IN DATA/IT 210. CONTRACTOR TO PROVIDE PATCH PANELS WITH KEYSTONE JACKS, CAMERA SYSTEM SWITCH AND CABLE MANAGEMENT. CONTRACTOR TO INSTALL THE RACK, PATCH PANELS, SWITCH AND THE CABLE MANAGEMENT SYSTEM. RACK LOCATION IN THE ROOM AND PATCH PANEL/SWITCH LOCATIONS ON THE RACK TO BE PLACED AS DIRECTED BY AU OIT. ALL CABLES SHALL TERMINATE ON JACKS IN OUTLETS AND ON PATCH PANEL/SWITCH PORTS AND BE TESTED WITH TEST RESULTS PRINTED OUT AND PROVIDED TO AU OIT. CONTRACTOR SHALL PROVIDE TO AU OIT PROOF THAT THEIR CAT 6 TESTER HAS A CURRENT CERTIFICATE OF CALIBRATION FROM THE MANUFACTURER TO INSURE PROPER CAT 6 STANDARDS TESTING COMPLIANCE.

UPPER FLOOR AUXILIARY SYSTEMS PLAN - ALTERNATE #1  
 SCALE: 1/8" = 1'-0"

UPPER FLOOR AUXILIARY SYSTEMS PLAN - BASE BID  
 SCALE: 1/8" = 1'-0"

PARTIAL AUX. SYS. PLAN - ALTERNATE #3  
 SCALE: 1/8" = 1'-0"



**GROUND BAR DETAIL**  
 NO SCALE