

LEGEND

- DOWNLIGHT, LETTER IN OR ADJACENT TO SYMBOL DENOTES TYPE, SEE FIXTURE SCHEDULE.
- LIGHT TROFFER, LETTER IN OR ADJACENT TO SYMBOL DENOTES TYPE, SEE FIXTURE SCHEDULE.
- INDICATES FIXTURE WITH EMERGENCY BATTERY BACK-UP POWER.
- ▬ STRIP OR UNDERCABINET FIXTURE, LETTER IN OR ADJACENT TO SYMBOL DENOTES TYPE, SEE FIXTURE SCHEDULE.
- WALL MOUNTED LIGHT FIXTURE, LETTER IN OR ADJACENT TO SYMBOL DENOTES TYPE, SEE FIXTURE SCHEDULE.
- ⊗ EXIT LIGHT, SEE FIXTURE SCHEDULE.
- \$ WALL SWITCH, SINGLE POLE.
- \$₃ WALL SWITCH, THREE WAY.
- \$₆ WALL SWITCH SENSOR, PIR & ULTRASONIC TECHNOLOGY
- \$₆ WALL SWITCH SENSOR, PIR ONLY TECHNOLOGY
- \$₇ TIME SWITCH, SINGLE POLE.
- DIGITAL ROOM LIGHTING CONTROL SYSTEM, WALL CONTROL STATION (NON-DIMMING)
- DIGITAL ROOM LIGHTING CONTROL SYSTEM, ONE ZONE WALL DIMMING CONTROL STATION
- DIGITAL ROOM LIGHTING CONTROL SYSTEM, TWO ZONE WALL DIMMING CONTROL STATION
- DIGITAL ROOM LIGHTING CONTROL SYSTEM, MULTI-ZONE WALL DIMMING CONTROL STATION, TOUCH SCREEN
- DIGITAL ROOM LIGHTING CONTROL SYSTEM, ENTRY STATION WALL DIMMING CONTROL STATION, TWO BUTTON
- DIGITAL ROOM LIGHTING CONTROL SYSTEM, DUAL TECH OCCUPANCY SENSOR ON CEILING
- DIGITAL ROOM LIGHTING CONTROL SYSTEM, DIGITAL ROOM CONTROLLER ABOVE CEILING (NON-DIMMING)
- DIGITAL ROOM LIGHTING CONTROL SYSTEM, ONE ZONE DIGITAL DIMMING ROOM CONTROLLER ABOVE CEILING
- DIGITAL ROOM LIGHTING CONTROL SYSTEM, TWO ZONE DIGITAL DIMMING ROOM CONTROLLER ABOVE CEILING
- DIGITAL ROOM LIGHTING CONTROL SYSTEM, WIRING AS DIRECTED BY MANUFACTURER
- 0-10V DIMMING WIRING, RUN IN CONDUIT OR AS NOTED.

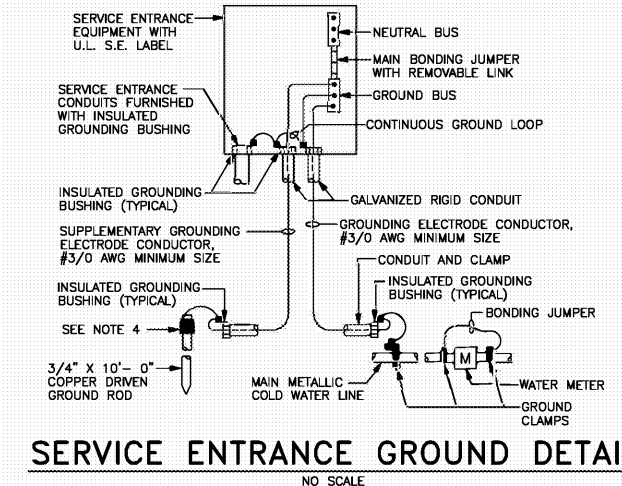
- ⊕ DUPLEX RECEPTACLE, 18" A.F.F. UNLESS NOTED OTHERWISE.
- ⊕ DOUBLE DUPLEX RECEPTACLES, 18" A.F.F. UNLESS NOTED OTHERWISE.
- ⊕S DOUBLE DUPLEX RECEPTACLES, 9" ABOVE COUNTER, COORDINATE WITH ARCHITECT. SEE CONTROLLED RECEPTACLE CONNECTION DETAIL.
- ⊕S DOUBLE DUPLEX RECEPTACLES, 80" A.F.F. FOR MONITOR. SEE CONTROLLED RECEPTACLE CONNECTION DETAIL.
- ⊕S DOUBLE DUPLEX GFCI TYPE RECEPTACLES, 9" ABOVE COUNTER, COORDINATE WITH ARCHITECT. SEE CONTROLLED RECEPTACLE CONNECTION DETAIL.
- ⊕GFI DUPLEX GFCI RECEPTACLE, 9" ABOVE COUNTER OR SINK HEIGHT, COORDINATE WITH ARCHITECT.
- LECTURN FLOOR POWER, DATA & A/V OUTLET, SEE SPECIFICATIONS FOR TYPE BOX. EXACT LOCATION BY AU.
- ⊕ BC BRANCH CONTROLLER CONNECTION, 1A, 208V, 1ϕ. PROVIDE TWO POLE WALL SWITCH ADJACENT TO UNIT FOR DISCONNECT.
- ⊕ CP CIRCULATION PUMP CONNECTION, 1/40HP, 120V. PROVIDE A ONE POLE WALL SWITCH ADJACENT TO UNIT FOR DISCONNECT.
- ⊕ D DEHUMIDIFIER CONNECTION, 13A, 120V. PROVIDE A ONE POLE WALL SWITCH ADJACENT TO UNIT FOR DISCONNECT.
- ⊕ E WATER COOLER OUTLET, PROVIDE GFCI RECEPTACLE BELOW EQUIPMENT
- ⊕ FC FAN COIL UNIT CONNECTION, 3A, 208V, 1ϕ. PROVIDE TWO POLE WALL SWITCH ADJACENT TO UNIT FOR DISCONNECT.
- ⊕ GF GAS FURNACE CONNECTION, 3/4HP, 120V. PROVIDE A SINGLE POLE WALL SWITCH ADJACENT TO UNIT FOR DISCONNECT.
- ⊕ L HANDICAP LIFT POWER CONNECTION, 120 VOLT. PROVIDE A ONE POLE WALL SWITCH ADJACENT TO UNIT FOR DISCONNECT.
- ⊕ OSA OUTSIDE AIR UNIT CONNECTION, 3A, 208V, 1ϕ. PROVIDE TWO POLE WALL SWITCH ADJACENT TO UNIT FOR DISCONNECT.
- ⊕ P PROJECTOR POWER OUTLET OR CONNECTION, LOCATE AND COORDINATE REQUIREMENTS WITH AU A/V DEPARTMENT. IF A RECEPTACLE IS REQUIRED, THEN PROVIDE A DOUBLE DUPLEX RECEPTACLE FLUSH IN CEILING WITH HALF SWITCHED. SEE CONTROLLED RECEPTACLE CONNECTION DETAIL.
- ⊕ S SCREEN POWER OUTLET OR CONNECTION, LOCATE AND COORDINATE REQUIREMENTS WITH AU A/V DEPARTMENT. IF A RECEPTACLE IS REQUIRED, THEN PROVIDE A DOUBLE DUPLEX RECEPTACLE FLUSH IN CEILING WITH HALF SWITCHED. SEE CONTROLLED RECEPTACLE CONNECTION DETAIL.
- ⊕ WH WATER HEATER AND HEAT TAPE CONNECTIONS, 120V. PROVIDE WP JUNCTION BOX AND MAKE PERMANENT WP CONNECTIONS.

- ⊕ HVAC CONTROL PANEL POWER CONNECTION, 120V.
- ⊕ SEE MONITOR LOCATION DETAIL FOR TWO BOXES AND CABLE REQUIREMENTS AT LOCATION THIS SYMBOL IS SHOWN.
- ⊕ LECTURN WALL OUTLET, 18" A.F.F. 2-GANG BOX WITH DATA ON ONE SIDE AND BLANK ON OTHER
- ⊕ DATA WALL OUTLET, 18" A.F.F.
- ⊕ DATA CEILING OUTLET FOR WIRELESS ACCESS POINT
- ⊕ CAMERA ON WP OUTLET BOX, WALL MOUNT UNLESS NOTED OTHERWISE, COORDINATE EXACT LOCATION WITH AU
- ⊕ JUNCTION BOX, MOUNTED ABOVE ACCESSIBLE CEILING WHERE CEILING OCCURS.
- ⊕ MOTOR CONNECTION AND/OR EQUIPMENT JUNCTION BOX
- ⊕ SAFETY SWITCH OR CIRCUIT BREAKER IN NEMA 1 ENCLOSURE AS NOTED.
- ⊕ PANELBOARD.
- BRANCH CIRCUIT WIRING, RUN CONCEALED.
- BRANCH CIRCUIT WIRING, RUN CONCEALED BELOW FLOOR.
- INDICATES NEUTRAL CONDUCTOR IN BRANCH CIRCUIT WIRING.
- INDICATES PHASE CONDUCTOR IN BRANCH CIRCUIT WIRING.
- INDICATES HOMERUN OF CIRCUITS.
- ⊕ FIRE ALARM/MASS NOTIFICATION SYSTEM, CONTROL PANEL
- ⊕ FAAP FIRE ALARM/MASS NOTIFICATION SYSTEM, ANNUNCIATOR
- ⊕ FIRE ALARM/MASS NOTIFICATION SYSTEM, MANUAL STATION.
- ⊕ FIRE ALARM/MASS NOTIFICATION SYSTEM, HORN AND STROBING LIGHT.
- ⊕ FIRE ALARM/MASS NOTIFICATION SYSTEM, FLASHING LIGHT ONLY.
- ⊕ FIRE ALARM/MASS NOTIFICATION SYSTEM, VISUAL MESSAGE DISPLAY (VMD).
- ⊕ FIRE ALARM/MASS NOTIFICATION SYSTEM, SMOKE DETECTOR, CEILING MOUNTED.
- ⊕ FIRE ALARM/MASS NOTIFICATION SYSTEM, HEAT DETECTOR, CEILING MOUNTED.
- ⊕ FIRE ALARM/MASS NOTIFICATION SYSTEM, MONITOR MODULE.
- ⊕ FIRE ALARM/MASS NOTIFICATION SYSTEM, FLOW VALVE CONNECTION.
- ⊕ FIRE ALARM/MASS NOTIFICATION SYSTEM, TAMPER SWITCH CONNECTION.
- ⊕ ACCESS CONTROL EQUIPMENT, SEE DETAIL ON SHEET E-7 THAT MATCHES NUMBER IN SYMBOL FOR WORK AT DOOR.
- ⊕ ADJACENT TO DEVICE INDICATES WEATHERPROOF TYPE.
- F.P. FUSE PER NAMEPLATE

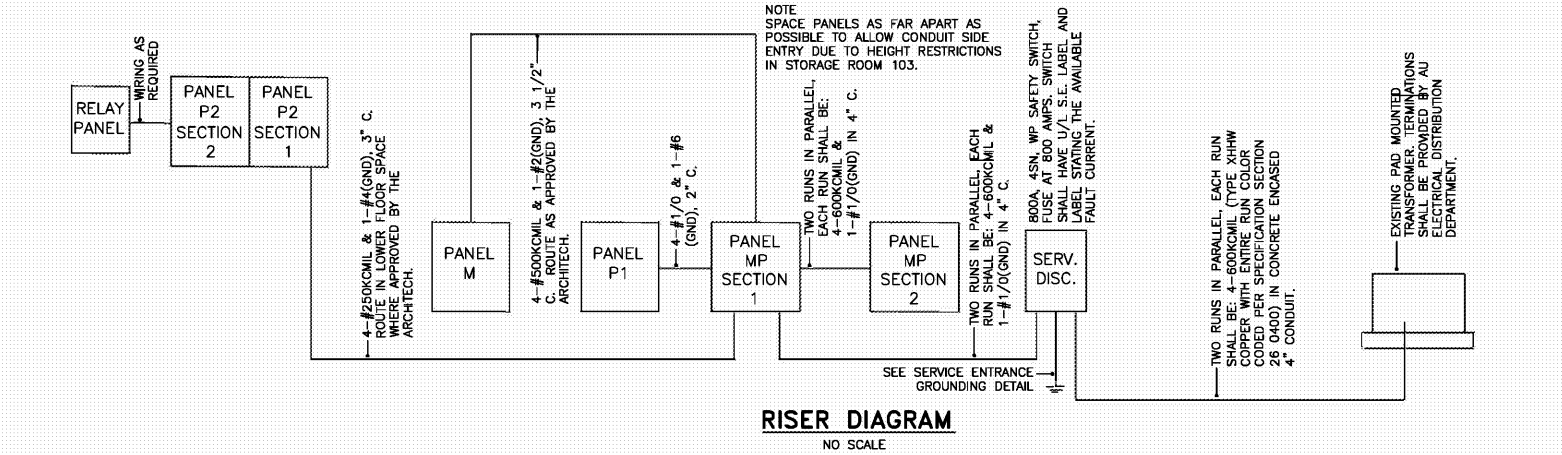
LIGHTING FIXTURE SCHEDULE					
SYMBOL	DESCRIPTION	MANUF. & CAT. NUMBER	LAMPS	MOUNTING	REMARKS
○ L1	2'x4' LED EDGE LIT LIGHT PANEL WITH ALUMINUM FRAME, 4000 LUMENS, 3500°K COLOR TEMPERATURE AND INTEGRAL 0-10V DIMMING MULTIVOLT DRIVER.	COLUMBIA SRP24-35-LW-G-ED-U	39W LED	RECESSED IN CEILING	
○ L2	2'x4' LED EDGE LIT LIGHT PANEL WITH ALUMINUM FRAME, 4500 LUMENS, 3500°K COLOR TEMPERATURE AND INTEGRAL 0-10V DIMMING MULTIVOLT DRIVER.	COLUMBIA SRP24-35-ML-G-ED-U	45W LED	RECESSED IN CEILING	
○ L3	2'x4' LED EDGE LIT LIGHT PANEL WITH ALUMINUM FRAME, 5200 LUMENS, 3500°K COLOR TEMPERATURE AND INTEGRAL 0-10V DIMMING MULTIVOLT DRIVER.	COLUMBIA SRP24-35-HL-G-ED-U	54W LED	RECESSED IN CEILING	
○ L4	2'x4' LED EDGE LIT LIGHT PANEL WITH ALUMINUM FRAME, 7000 LUMENS, 3500°K COLOR TEMPERATURE AND INTEGRAL 0-10V DIMMING MULTIVOLT DRIVER.	COLUMBIA SRP24-35-VL-G-ED-U	69W LED	RECESSED IN CEILING	
S1	4' LED STRIP WITH ACRYLIC LENS, 5,000 LUMENS, 3500°K COLOR TEMPERATURE AND INTEGRAL MULTIVOLT DRIVER.	COLUMBIA LCL-4-35-ML-E-U-PAF	42W LED	SUSPENDED/SURFACE	
⊕	6" OPEN LED DOWNLIGHT WITH ALUMINUM ALZAK SS REFLECTOR, WHITE TRIM RING, 2000 LUMEN OUTPUT, 0-10 VOLT DIMMING TO 10%, 120 VOLT OPERATION AND EMERGENCY BATTERY BACKUP.	PRESCOLITE LF6SLEM-6LFSL20L35KSSWT	26W LED	RECESSED IN CEILING	
⊕	16" SQUARE x 6" HIGH SURFACE MOUNTED LED FIXTURE WITH FINISH BY ARCHITECT, 3200 LUMENS, 3500°K COLOR TEMPERATURE, 120 VOLT DRIVER AND SURFACE ADAPTER	KENALL MS15FL PP * 25L35K 120 SA	30W LED	SURFACE	* FINISH BY ARCHITECT
○	16" SQUARE x 6" HIGH SURFACE MOUNTED LED FIXTURE WITH FINISH BY ARCHITECT, 3200 LUMENS, 3500°K COLOR TEMPERATURE, 120 VOLT DRIVER, SURFACE ADAPTER AND EMERGENCY BATTERY BACKUP	KENALL MS15FL PP * 25L35K 120 LEL-SA	30W LED	SURFACE	* FINISH BY ARCHITECT
⊕	LED WALL FIXTURE WITH DIE-CAST ALUMINUM HOUSING, FINISH BY ARCHITECT, RECTANGULAR WEDGE DESIGN, FLAT CLEAR LENS, 2600 LUMENS, 3000°K COLOR TEMPERATURE, MULTIVOLT INTERNAL DRIVER AND EMERGENCY BATTERY BACKUP.	HUBBELL TRP1-12L-30-3K7-3	28W LED	WALL	* FINISH BY ARCHITECT
⊕	LED LUMINAIRE TO MATCH PARKING STANDARD, 85 WATTS, 3000°K COLOR TEMPERATURE, FORWARD THROW DISTRIBUTION, ALUMINUM CONSTRUCTION, DARK BRONZE FINISH, 10,000 LUMENS AND 120 VOLT OPERATION.	KIM 221 ZBL-85 SWR 4 UNV WB DB.	85W LED	WALL	ANCHOR TO WALL STRUCTURE. PROVIDE ADDITIONAL BRACING AS DIRECTED BY ARCHITECT.
⊗	SINGLE FACE LED EXIT LIGHT WITH DIE-CAST ALUMINUM HOUSING, WHITE FINISH, GREEN STENCIL LETTERS, MULTIVOLT OPERATION AND UNIVERSAL MOUNTING	DUAL LITE SESGW	2W LED	⊗ CEILING	
⊗	DOUBLE FACE LED EXIT LIGHT WITH DIE-CAST ALUMINUM HOUSING, WHITE FINISH, GREEN STENCIL LETTERS, MULTIVOLT OPERATION AND UNIVERSAL MOUNTING	DUAL LITE SEDGW	2W LED	⊗ CEILING	
○	INDICATES FIXTURE TO HAVE HAVE EMERGENCY BATTERY UNIT THAT OPERATES AT 1200-1400 LUMENS FOR 90 MINUTES DURING POWER OUTAGE.	COLUMBIA ELL14	N/A	INTEGRAL	

PANELBOARD SCHEDULE												
PANEL	TYPE	CABINET	MAINS			BRANCHES					REMARKS	
			TYPE	SIZE	PHASE FEED	REQ'D	PHASE	TOTAL	POLES	FRAM		TRIP
P1	SO D	SURFACE NEMA 3R	MAIN LUGS WITH SPD	225A	3PH, 4W 120/208V W/GND BUS	2	6	26	1	QOB	20A	FC UNIT
						1	0	1	2	QOB	20A	UNIT HEATER
						14	0	14	1	QOB	---	SPACE ONLY
P2	SO D	SURFACE TWO EQUI. SECTIONS	MAIN LUGS WITH SPD	225A	3PH, 4W 120/208V W/GND BUS	7	9	66	1	QOB	20A	LOCK-ON DEVICE FOR FACP
						8	0	8	2	QOB	15A	FC UNIT
						2	0	2	1	QOB	---	SPACE ONLY
M	SO D	SURFACE MAIN LUGS	800A	3PH, 4W 120/208V W/GND BUS	1	0	1	2	QOB	30A	DAC-1	
						1	0	1	3	QOB	30A	GF-1 CU
						3	0	3	3	QOB	60A	HRU-1 & HRU-2
						1	0	1	3	QOB	100A	EXISTING HVAC PACKAGE UNIT
						13	0	13	1	QOB	---	SPACE ONLY
MP	SO D	SURFACE MAIN LUGS	800A WITH FEED THRU LUGS	3PH, 4W 120/208V W/GND BUS	1	0	1	3	BD	100A	100A COMPANY SWITCH	
						1	0	1	3	HD	150A	PANEL P1
						1	0	1	3	JD	225A	PANEL P2
						1	0	1	3	LD	400A	PANEL M
						4	0	4	3	BD	---	SPACE ONLY
						1	0	1	3	HD	---	SPACE ONLY
						1	0	1	3	JD	---	SPACE ONLY

PANELBOARD NOTES:
 1. PROVIDE ARC-FLASH WARNING LABELS THAT COMPLY WITH NEC 110.16 ON ELECTRICAL EQUIPMENT.
 2. PANEL SHALL HAVE NAMEPLATE ON OUTSIDE COVER STATING PANEL DESIGNATION, VOLTAGE AND PHASE AND WHERE SUPPLY OF POWER ORIGINATES PER NEC 408.4(B).



- NOTES:**
- GROUNDING ELECTRODE CONDUCTORS SHALL BE ENCLOSED FULL LENGTH BY GALVANIZED RIGID CONDUIT AS INDICATED.
 - GROUNDING ELECTRODE CONDUCTORS SHALL BE BARE COPPER, SOFT-DRAWN.
 - ALL BUSHINGS, CLAMPS, JUMPERS, DEVICES, ETC. INSTALLED IN DIRECT CONTACT WITH EARTH SHALL BE APPROVED FOR THE PURPOSE.
 - GROUND CONNECTIONS BELOW GRADE SHALL BE OF THE EXOTHERMICALLY WELDED TYPE.
 - PROVIDE BONDING TO METAL FRAME OF THE BUILDING OR STRUCTURE, GROUND RING, PLATE ELECTRODES AND CONCRETE-ENCASED ELECTRODE AS REQUIRED BY LATEST NEC ARTICLE 250. CONTACT LOCAL AUTHORITY HAVING JURISDICTION FOR ADDITIONAL WORK AND/OR DEVIATIONS.
 - ALL GROUNDING BUSHINGS SHALL BE BONDED WITH SAME SIZE CONDUCTOR AS GROUNDING CONDUCTOR IN CONDUIT OR USE PROPERLY SIZE GROUNDING HUBS.



Facilities Management
 1161 West Samford Avenue
 Auburn University, AL 36849
 Phone: (334) 844-4810
 Fax: (334) 844-9458
 Safety is our first priority.
 Think Safety. Act Safely.

No.	Revision	Date



JMR Architecture, PC
 4400 Grandview Avenue
 Montgomery, AL 36110
 Phone: (334) 420-5672
 Fax: (334) 420-5662
 JMR-111 Project Number: 19-968
 Drawn By: DT

Auburn University Building
 Ham Wilson Arena Renovations
 Project Number 19-451

SHEET TITLE:
**SCHEDULES,
 LEGEND
 AND
 NOTES**

DRAWN BY:
 SLC
 CHECKED BY:
 SLC
 DATE:
 JANUARY 21, 2021
 FILE NUMBER:
 -
 PROJECT NUMBER:
 19-451
 SHEET NUMBER: