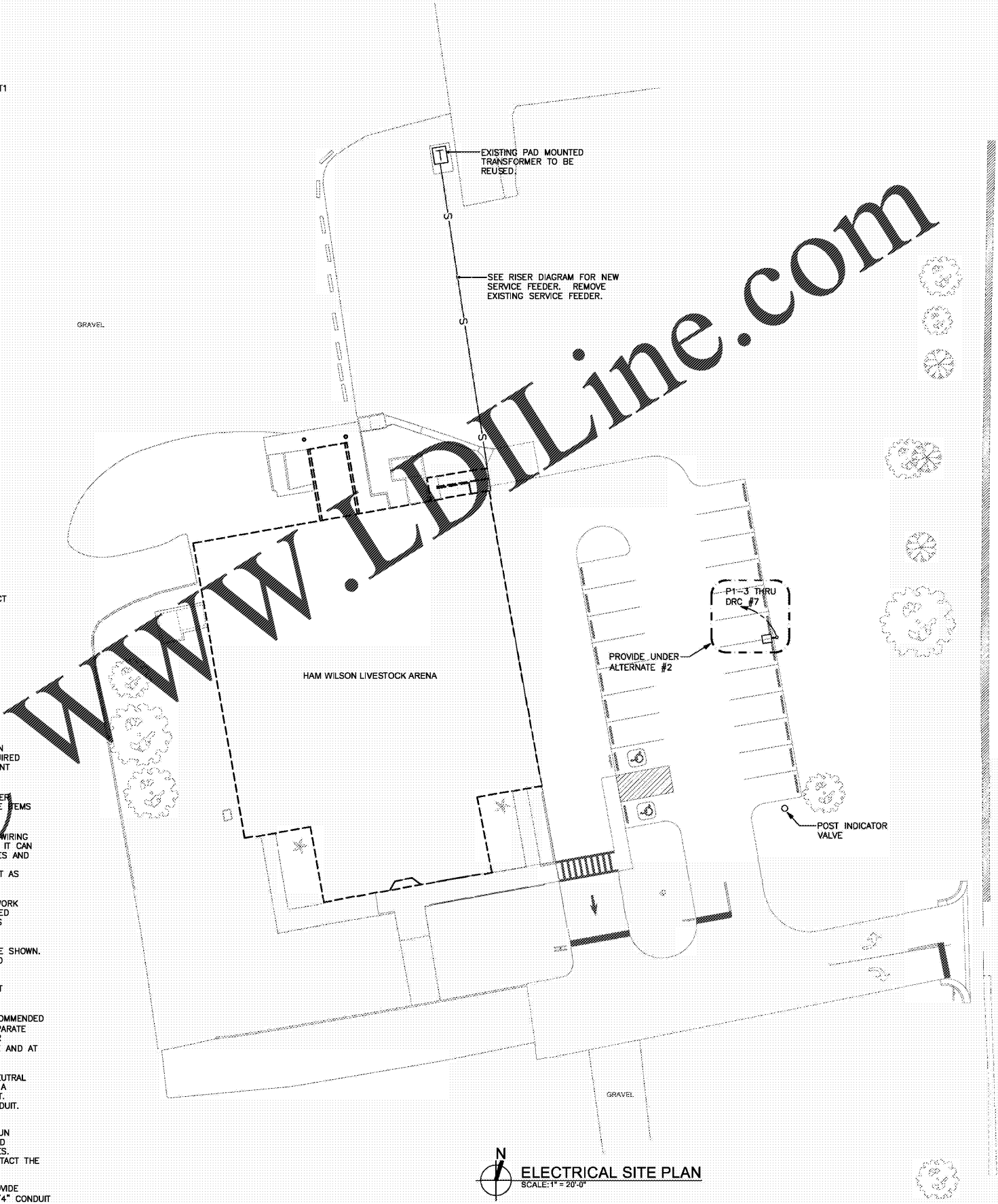


- GENERAL ELECTRICAL NOTES**
- REMOVE ALL EXISTING ELECTRICAL WORK IN THIS BUILDING UNLESS NOTED OR SHOWN OTHERWISE. REMOVED ITEMS SHALL BE REMOVED FROM SITE AND DISPOSE AS REQUIRED BY SPECIFICATIONS AND LAWS. DISCONNECT EXISTING HVAC AND PLUMBING EQUIPMENT UNLESS NOTED TO REMAIN ON THEIR RESPECTIVE DRAWINGS OR SPECIFICATIONS.
 - WHERE EXISTING ELECTRICAL WORK TO REMAIN IS INTERRUPTED BY REMOVAL OF OTHER ELECTRICAL WORK, PROVIDE ALL WIRING, CONDUIT, ETC. REQUIRED TO MAINTAIN THESE ITEMS IN OPERATION.
 - POWER RELATED ITEMS SHOWN OR NOTED TO BE REMOVED SHALL HAVE ASSOCIATED WIRING REMOVED BACK TO JUNCTION BOX OR NEAREST ACTIVE OUTLET OR BREAKER UNLESS IT CAN BE REUSED FOR NEW WORK. REMOVE ASSOCIATED CONDUITS. FILL OPENINGS IN BOXES AND CABINETS. PATCH FINISHES AS DIRECTED BY ARCHITECT. PROVIDE BLANK PLATES ON ABANDONED WALL OUTLET BOXES. LABEL BREAKERS NO LONGER SERVING EQUIPMENT AS SPARE AND TURN OFF UNLESS IT IS TO BE REUSED.
 - REMOVE THE EXISTING FIRE ALARM SYSTEM, TELEPHONE SYSTEM AND DATA SYSTEM WORK ON THE INTERIOR OF THIS BUILDING UNLESS NOTED OR SHOWN OTHERWISE. REMOVED ITEMS SHALL BE REMOVED FROM SITE AND DISPOSE AS REQUIRED BY SPECIFICATIONS AND LAWS.
 - PROVIDE GREEN INSULATED OVERHEAD CONDUCTOR IN ALL RUNS IN ADDITION TO THOSE SHOWN. WHEN NO CONDUCTORS ARE SHOWN, THEN PROVIDE A PHASE, NEUTRAL AND GROUND CONDUCTOR.
 - PRIOR TO TROUGH-IN OF A NEW OUTLET (RECEPTACLE, DATA, TV, ETC.), VERIFY EXACT LOCATION WITH THE ARCHITECT.
 - THE LOW VOLTAGE LIGHTING CONTROL WIRING SHALL BE COLOR, TYPE AND SIZE RECOMMENDED BY THE LIGHTING/DIMMING MANUFACTURER AND SHALL BE INSTALLED IN CONDUIT SEPARATE FROM THE POWER CONDUCTORS OR RUN EXPOSED IN A NEAT AND ORDERLY MANNER ATTACHED TO THE LIGHTING CIRCUIT CONDUITS WITHIN 12" FROM LUMINAIRE AND BOX AND AT LEAST 24" MAXIMUM INTERVALS THROUGHOUT RUN.
 - NO MULTI-WIRE BRANCH CIRCUITS SHALL BE RUN ON THIS PROJECT. PROVIDE A NEUTRAL CONDUCTOR FOR EACH PHASE CONDUCTOR. THE NEUTRAL CONDUCTOR SHALL HAVE A CONTINUOUS STRIPE OF SAME COLOR AS THE PHASE CONDUCTOR IN BRANCH CIRCUIT. GROUP BRANCH CIRCUIT CONDUCTORS WHEN SAME COLOR IS USED IN COMMON CONDUIT. NO MORE THAN THREE CIRCUITS SHALL BE RUN IN A CONDUIT.
 - ALL NEW CONDUIT SHALL BE RUN CONCEALED ON UPPER FLOOR. CONDUITS MAY RUN OVERHEAD, IN WALLS OR IN AREAS SHOWN ON LOWER FLOOR PLAN AND IN NEAT AND ORDERLY MANNER. NO CONDUIT SHALL BE EXPOSED UNLESS IN UTILITY TYPE SPACES. WHERE WORK IS SHOWN IN EXISTING WALLS OR PLACES NOT ACCESSIBLE, THEN CONTACT THE ARCHITECT FOR WIRING METHOD TO USE.
 - THE ELECTRICAL CONTRACTOR SHALL REFER TO THE MECHANICAL DRAWINGS AND PROVIDE THERMOSTAT BACK BOXES WHERE SHOWN. FROM EACH THERMOSTAT BOX RUN A 3/4" CONDUIT UP WALL AND STUB OUT AT AN ACCESSIBLE SPACE ABOVE THE CEILING. COORDINATE WORK AND BOX SIZES WITH MECHANICAL CONTRACTOR.
 - AFTER WORK HAS BEEN COMPLETED, CLEAN ALL LIGHT FIXTURES IN THE RENOVATED SPACES. NO DIRT, DEBRIS, FINGER PRINTS, SOAP RESIDUE, ETC. SHALL BE VISIBLE.
 - SUBMIT SUBSTITUTIONS TO LIGHT FIXTURES AND LIGHTING CONTROLS TO THE ENGINEER AT LEAST 10 DAYS PRIOR TO BID FOR REVIEW.



Order Place

WWW.LDILine.com



Facilities Management
1161 West Samford Avenue
Auburn University, AL 36849
Phone: (334) 844-4810
Fax: (334) 844-9458
Safety is our first priority.
Think Safety. Act Safely.

No.	Revision	Date



JMR+H
Architecture, PC
4405 S. University Blvd.
Montgomery, AL 36104
Phone: (334) 420-5672
Fax: (334) 420-5662
Project Number: 19-451
Drawn By: DT

Auburn University Building
Ham Wilson Arena Renovations
Project Number 19-451

SHEET TITLE:
**ELECTRICAL
SITE
PLAN**

DRAWN BY:
SLC
CHECKED BY:
SLC
DATE:
JANUARY 21, 2021
FILE NUMBER:
-
PROJECT NUMBER:
19-451
SHEET NUMBER:

E-1