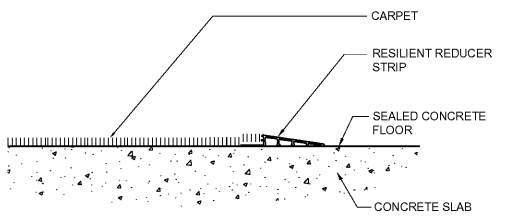
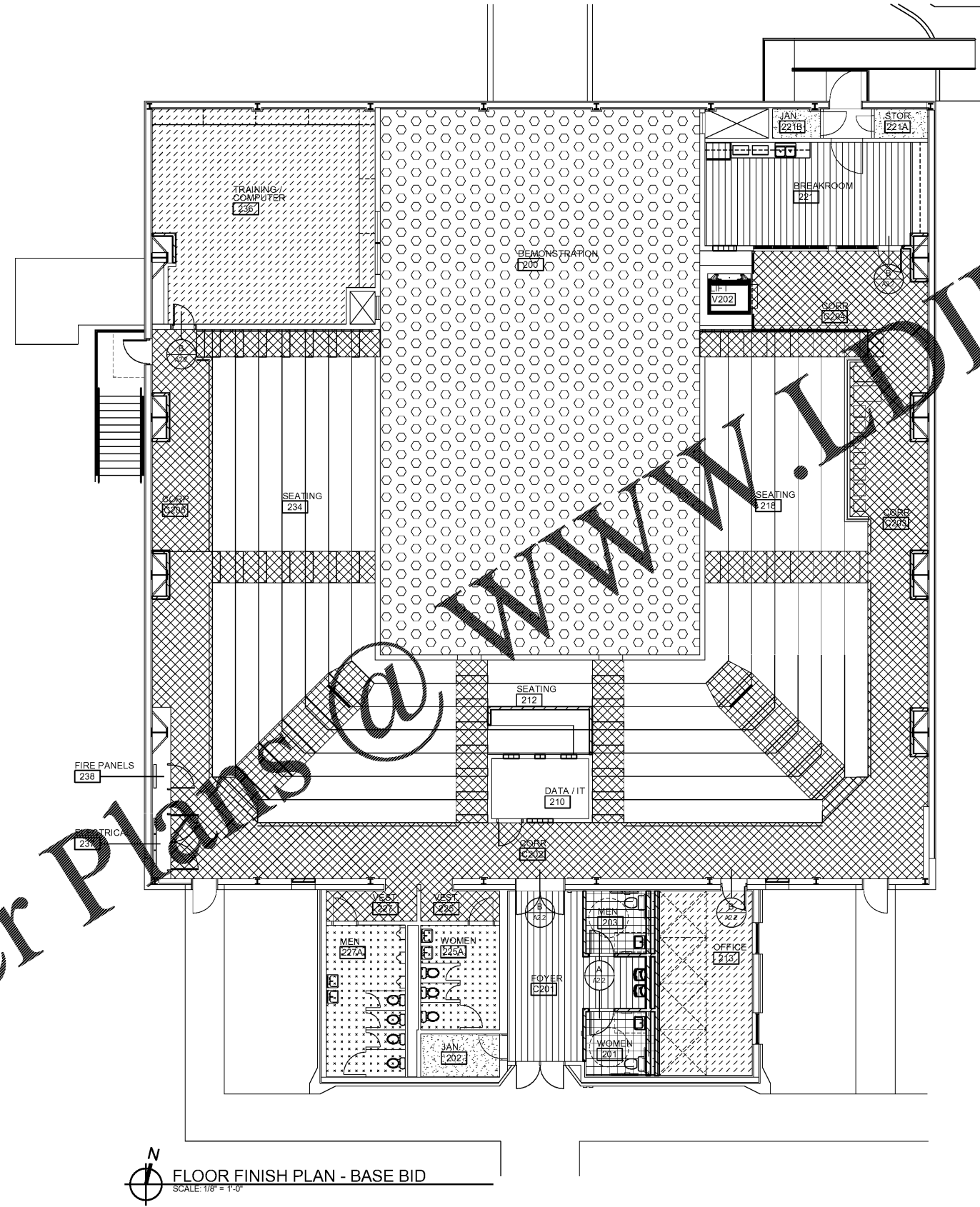


A
A2.2
CERAMIC TO LVT TRANSITION
SCALE: 6"=1'-0"



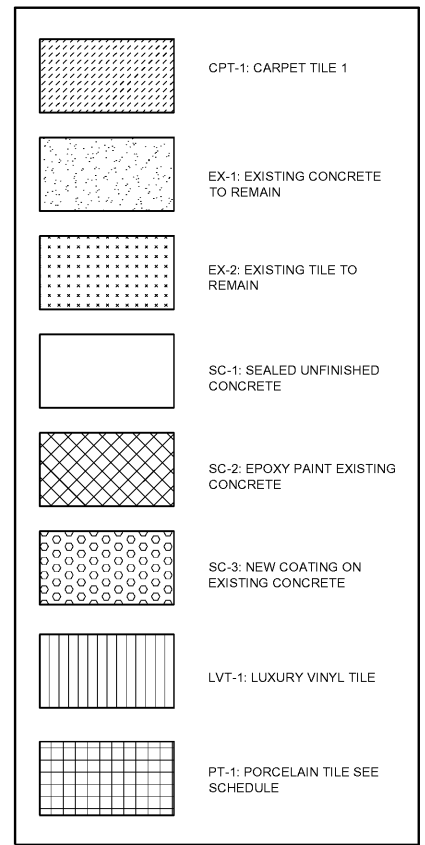
B
A2.2
CONCRETE TO CARPET TRANSITION
SCALE: 6"=1'-0"



FLOOR FINISH PLAN - BASE BID
SCALE: 1/8" = 1'-0"

FINISH SCHEDULE - BASE BID							
NO.	ROOM	FLOOR	BASE	WALLS	CEILING	HT.	REMARKS
1	PORCELAIN TILE						
2	CARPET TILE						
3	LUXURY VINYL TILE						
4	CONCRETE SEALED						
5	NEW COATING ON EXISTING CONCRETE						
6	EXISTING TILE TO REMAIN						
7	EXISTING						
8	4" RUBBER BASE						
9	4" RUBBER BASE						
10	EXISTING						
11	EXISTING						
12	GYPSUM BOARD PAINTED						
13	1/2" GYPSUM BOARD (FIRE WALL)						
14	PLYWOOD W/ SCOT UP TO 8'-0"						
15	PAINTED CHU / CONCRETE						
16	EPOXY PAINTED CHU / CONCRETE						
17	ACoustical TILE (2' X 2')						
18	EXPOSED						
19	GYPSUM BOARD PAINTED						
20	VINYL COATED ACOUSTICAL TILE						
21	EXISTING CONCRETE / CORE SLAB						
22	EPOXY PAINTED						
LOWER FLOOR							
101	DEMOnSTRATION		5	1	5	19'-6"	
102	STORAGE	4			6	5	EXISTING
103	MECH / ELECTRICAL	4			5	5	EXISTING
V101	ADA LIFT	5					
UPPER FLOOR							
200	DEMOnSTRATION		3	1	5	1	**19'-6"
201	WOMEN	1		2	3	4	9'-0"
202	JANITOR			4	1	1	9'-0"
203	MEN			2	3	4	9'-0"
210	DATA / IT	4			4	1	8'-0"
212	SEATING	5				1	VARIES
213	OFFICE	2		1	1	1	9'-0"
218	SEATING	5				1	VARIES
221	BREAKROOM	3		1	1	1	9'-0"
221A	STORAGE		7		1	4	EXISTING
221B	JANITOR		7		1	4	EXISTING
225	VESTIBULE		5		1	5	9'-0"
225A	WOMEN		6		5	4	9'-0"
227	VESTIBULE		5		1	5	9'-0"
227A	MEN		6		5	4	9'-0"
234	SEATING		5		1	1	VARIES
236	TRAINING / COMPUTER	2		1	1	1	9'-0"
237	ELECTRICAL		5		1	3	EXPOSED
238	FIRE PANELS		5		1	3	EXPOSED
C201	FOYER	3			1	1	9'-0"
C202	CORRIDOR		5	1	1	1	**19'-6"
C203	CORRIDOR		5	1	1	1	**19'-6"
C204	CORRIDOR		5	1	1	1	**19'-6"
C205	CORRIDOR		5	1	1	1	**19'-6"

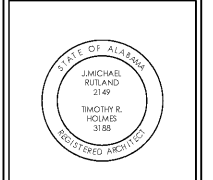
REMARKS
 1. CLEAN EXISTING TILE
 2. SEE FLOOR FINISH PLAN
 ** CEILING HEIGHT FROM LOWER LEVEL OF DEMONSTRATION FLOOR



Order Plans @ www.lodline.com

AU
 Facilities Management
 1161 West Samford Avenue
 Auburn University, AL 36849
 Phone: (334) 844-4810
 Fax: (334) 844-9458
*Safety is our first priority.
 Think Safety. Act Safely.*

No.	Revision	Date
-	-	00/00/00



JMR-H
 Architecture, P.C.
 446 Geneva Avenue
 Montgomery, AL 36104
 Phone: (334) 420-5672
 Fax: (334) 420-5692
 JMR-H Project Number: 19-968
 Drawn By: DT

**Auburn University Building
 Ham Wilson Arena Renovations
 Project Number 19-451**

SHEET TITLE:
**FLOOR FINISH
 PLAN - BASE
 BID, FINISH
 SCHEDULE**

DRAWN BY:
 DT

CHECKED BY:
 JC / TH

DATE:
 JANUARY 21, 2021

FILE NUMBER:
 -

PROJECT NUMBER:
 19-451

SHEET NUMBER:

A2.2

24 of 61