

### LIFE SAFETY LEGEND

	EXIT DISCHARGE	D.O.T.	DISTANCE OF TRAVEL
	EXIT WIDTH	C.P.T.	COMMON PATH OF TRAVEL
	EXIT DETAILS		SEMI-RECESSED FIRE EXTINGUISHER CABINET
	EXIT DETAILS: 45°/(141") 205(226)		BRACKET MOUNTED FIRE EXTINGUISHER
	BUSINESS OCCUPANCY		EXIT LIGHT
	ASSEMBLY OCCUPANCY		IBC CHAPTER 10, SECTION 1015.2.1: EXIT ACCESS DOORWAYS TO BE ONE-HALF OF THE LENGTH OF THE OVERALL DIAGONAL DIMENSION OF THE BUILDING TO BE SERVED.
	STORAGE / MECHANICAL / ELECTRICAL OCCUPANCY		D.O.T. 100'
			BEGINNING POINT / DISTANCE TO EXIT FOR PATH OF TRAVEL

**RECAPITULATIONS (BASE BID) LOWER FLOOR**  
 ASSEMBLY OCCUPANCY: 2,826 G.S.F. / OCC. = 189 OCC.  
 STORAGE OCCUPANCY: 848 G.S.F. / OCC. = 3 OCC.  
 STORAGE OCCUPANCY: 796 G.S.F. / OCC. = 3 OCC.  
 TOTAL OCCUPANCY THIS FLOOR: 195

**RECAPITULATIONS (BASE BID) UPPER FLOOR**  
 ASSEMBLY OCCUPANCY (FIXED SEATING): = 448 OCC.  
 BUSINESS OCCUPANCY: = 29 OCC.  
 TOTAL OCCUPANCY THIS FLOOR: 477

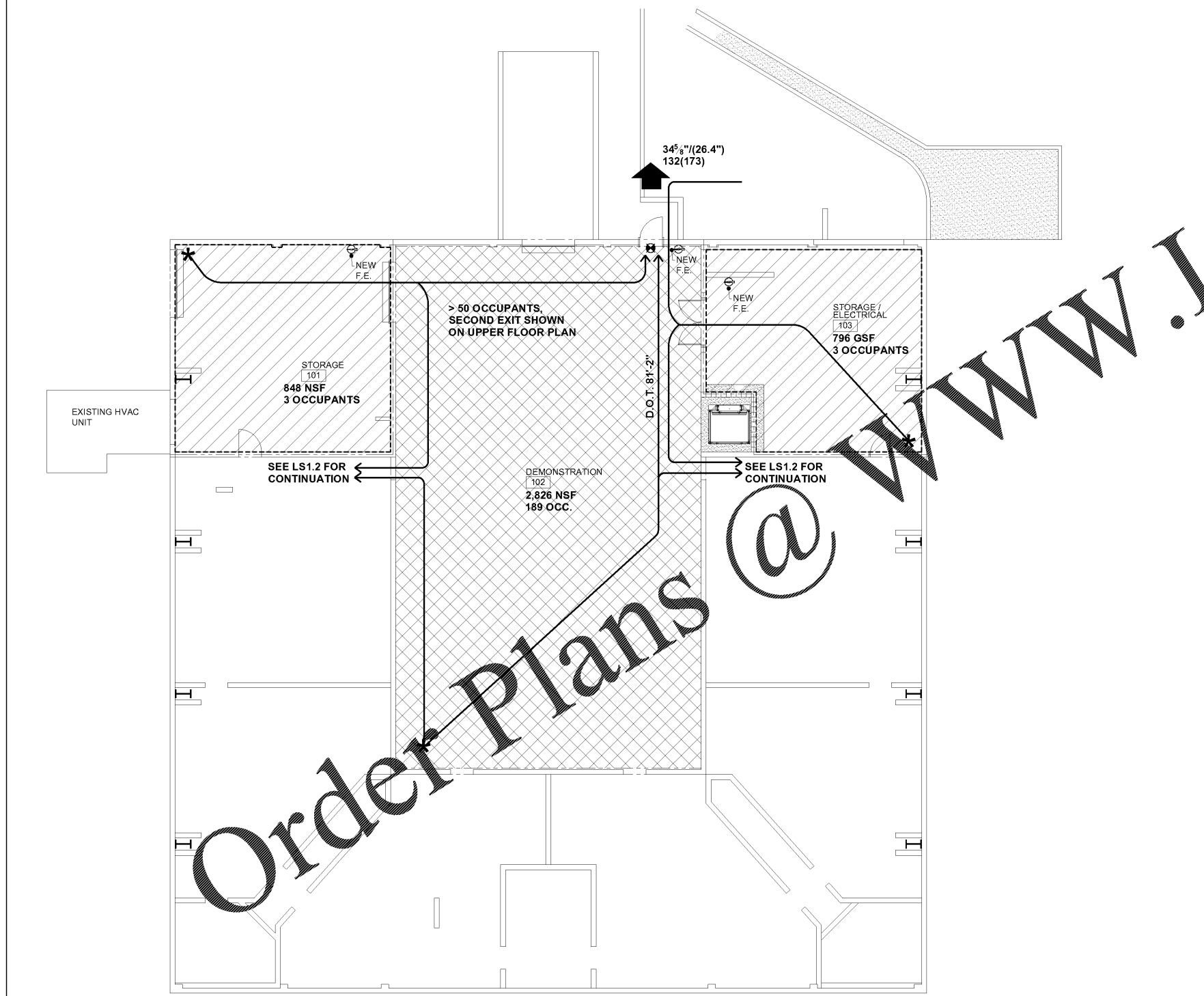
**RECAPITULATIONS (UPPER WALKWAY)**  
 ASSEMBLY OCCUPANCY:  
 1,829 G.S.F. / 15 G.S.F. / OCC. = 122 OCC  
 TOTAL OCCUPANTS: 794 OCCUPANTS

**BASE BID LOWER FLOOR**  
 195 OCCUPANTS X 0.20' = 39' REQ'D  
 (1) @ 34" (LOWER LEVEL) = 34"  
 (3) @ 34" (UPPER LEVEL) = 102"  
 (1) @ 68" (UPPER LEVEL) = 68"  
 TOTAL PROVIDED = 204" (ADEQUATE)

**BASE BID UPPER FLOOR**  
 794 OCCUPANTS X 0.20' = 159"  
 (3) @ 34" = 102"  
 (1) @ 68" = 68"  
 TOTAL PROVIDED = 170" (ADEQUATE)

### IBC / LIFE SAFETY CODE ANALYSIS

<b>GENERAL</b>		
APPLICABLE CODES		
2015 INTERNATIONAL BUILDING CODE WITH LOCAL AMENDMENTS 2015 INTERNATIONAL ENERGY CONSERVATION CODE WITH LOCAL AMENDMENTS 2015 INTERNATIONAL PLUMBING CODE WITH LOCAL AMENDMENTS 2015 INTERNATIONAL MECHANICAL CODE WITH LOCAL AMENDMENTS 2015 INTERNATIONAL FUEL GAS CODE WITH LOCAL AMENDMENTS 2015 INTERNATIONAL FIRE CODE 2014 NATIONAL ELECTRICAL CODE WITH LOCAL AMENDMENTS 2013 NATIONAL FIRE ALARM AND SIGNALING (NFPA 72) 2014 ACC/NSA STANDARD FOR DESIGN ANSI / ASHRAE / IESNA STANDARD 90.1-2013 ENERGY STANDARD FOR BUILDINGS EXCEPT LOW-RISE RESIDENTIAL 2010 ADA STANDARDS FOR ACCESSIBLE DESIGN (DOJ)		
CODE REVIEW	2015 INTERNATIONAL BUILDING CODE (ALABAMA BUILDING COMMISSION)	2015 INTERNATIONAL FIRE CODE (ALABAMA BUILDING COMMISSION / STATE FIRE MARSHALL)
OCCUPANCY CLASSIFICATION	PRIMARY OCCUPANCY - ASSEMBLY OCCUPANCY A-4 ACCESSORY BUSINESS OCCUPANCY B ACCESSORY STORAGE / MECH. / ELEC. OCCUPANCY S (CHAPTER 3, SECTION 304.1)	PRIMARY OCCUPANCY - ASSEMBLY OCCUPANCY A-4 ACCESSORY BUSINESS OCCUPANCY B ACCESSORY STORAGE / MECH. / ELEC. OCCUPANCY S (CH. 2, SECTION 202 GENERAL DEFINITIONS, OCCUPANCY CLASSIFICATION PAGE 304.1)
CONSTRUCTION TYPE	TYPE IIB, SPRINKLERED CHAPTER 6, SECTION 602.2 AND TABLE 601	N/A - REFER TO 2015 INTERNATIONAL BUILDING CODE
BUILDING HEIGHT LIMIT	BUILDING HEIGHT LIMITATION: (S1) BUSINESS OCCUPANCY: ALLOWABLE: 2 FLOORS (CHAPTER 5, TABLE 504.4) / DESIGN - 2 FLOOR	N/A - REFER TO 2015 INTERNATIONAL BUILDING CODE
BUILDING AREA	BUILDING AREA LIMITATION: BUSINESS OCCUPANCY: 28,500 S.F. DESIGN: 13,344 S.F. (CHAPTER 5, TABLE 506.2)	N/A - REFER TO 2015 INTERNATIONAL BUILDING CODE
AUTOMATIC SPRINKLER SYSTEM	FULLY-SPRINKLERED IN ACCORDANCE WITH CHAPTER 9, SECTION 903 & SECTION 903.3	SPRINKLERED (IN ACCORDANCE WITH CH. 9, SECTION 903 & SECTION 903.3)
OCCUPANCY LOADS	ASSEMBLY OCCUPANCY (A-4): 15 NSF/PERSON BUSINESS OCCUPANCY B: 100 GSF/PERSON STORAGE / MECHANICAL / ELECTRICAL: 300 GSF/PERSON (CHAPTER 10, TABLE 1004.1.2)	ASSEMBLY OCCUPANCY (A-4): 15 NSF/PERSON BUSINESS OCCUPANCY B: 100 GSF/PERSON STORAGE / MECHANICAL / ELECTRICAL: 300 GSF/PERSON (CHAPTER 10, TABLE 1004.1.2)
CODE REVIEW	2015 INTERNATIONAL BUILDING CODE (ALABAMA BUILDING COMMISSION)	2015 INTERNATIONAL FIRE CODE (ALABAMA BUILDING COMMISSION)
MEANS OF EGRESS	COMMON PATH OF TRAVEL: ASSEMBLY: 75' FT. MAX. (> 49 OCC.) (CH. 10, TABLE 1006.2.1 & SECTION 1006.2.1) NOTE a: APPROVED SPRINKLER  30 FT FROM ANY SEAT TO A POINT WHERE AN OCCUPANT HAS A CHOICE OF TWO PATHS OF EGRESS TRAVEL. (CHAPTER 10, SECTION 1029.8)  TRAVEL DISTANCE TO EXISTS W/ APPROVED SPRINKLER SYSTEM: BUSINESS: 250' FT MAX. (CHAPTER 10, TABLE 1017.2. NOTE b: APPROVED SPRINKLER)	COMMON PATH OF TRAVEL: BUSINESS: 75' FT. MAX. (> 49 OCC.) (CH. 10, TABLE 1006.2.1 & SECTION 1006.2.1) NOTE a: APPROVED SPRINKLER  30 FT FROM ANY SEAT TO A POINT WHERE AN OCCUPANT HAS A CHOICE OF TWO PATHS OF EGRESS TRAVEL. (CHAPTER 10, SECTION 1029.8)  TRAVEL DISTANCE TO EXISTS W/ APPROVED SPRINKLER SYSTEM: BUSINESS: 250' FT MAX. (CHAPTER 10, TABLE 1017.2. NOTE b: APPROVED SPRINKLER)
MAXIMUM DEAD END HALLWAY	ASSEMBLY: 20'-0" (CHAPTER 10, SECTION 1020.4) DEAD END AISLES: 20'-0" MAX. (CHAPTER 10, 1029.9.5)	ASSEMBLY: 20'-0" (CHAPTER 10, SECTION 1020.4) DEAD END AISLES: 20'-0" MAX. (CHAPTER 10, 1029.9.5)
EGRESS WIDTH PER PERSON SERVED (IN)	LEVEL: 0.20 - (CHAPTER 10, 1005.3.2) STAIRS: 0.30 FOR STAIRS HAVING TREAD DEPTHS > 11" AND RISER HT BETWEEN 4" MIN. AND 8" MAX. - (CHAPTER 10, 1005.3.1)	LEVEL: 0.20 - (CHAPTER 10, 1005.3.2) STAIRS: 0.30 FOR STAIRS HAVING TREAD DEPTHS > 11" AND RISER HT BETWEEN 4" MIN. AND 8" MAX. - (CHAPTER 10, 1005.3.1)
MINIMUM CORRIDOR WIDTH	B: 44" MIN. (CHAPTER 10, TABLE 1020.2) / 24" MIN: ACCESS TO MECH, ELEC, PLUMBING SYSTEMS OR EQUIPMENT (CHAPTER 10, TABLE 1020.2)	REFER TO 2015 INTERNATIONAL BUILDING CODE
MINIMUM CLR. OPENING OF EXIT DOORS	32" MINIMUM WIDTH / 48" MAX. DOOR LEAF SIZE (CHAPTER 10, 1010.1.1)	32" MINIMUM WIDTH / 48" MAX. DOOR LEAF SIZE (CHAPTER 10, SECTION 1010.1.1)
CODE REVIEW	2015 INTERNATIONAL BUILDING CODE (ALABAMA BUILDING COMMISSION)	2015 INTERNATIONAL FIRE CODE (ALABAMA BUILDING COMMISSION)
BUILDING CONSTRUCTION	FIRE RESISTANCE RATINGS CHAPTER 6 TABLE 601 - IBC 2009 CHAPTER 8 - NFPA TABLE A.8.2.1.2  STRUCTURAL FRAME COLUMNS, GIRDERS, TRUSSES - 0  BEARING WALLS EXTERIOR - 0 INTERIOR - 0  NON BEARING WALLS AND PARTITIONS EXTERIOR AND INTERIOR - 0  FLOOR CONSTRUCTION BEAMS & JOISTS - 0  ROOF CONSTRUCTION BEAMS & JOISTS - 0 (FIRE RETARDANT-TREATED WOOD)	REFER TO 2015 INTERNATIONAL BUILDING CODE
	- WALLS AND PARTITIONS FIRE WALLS: BUSINESS: 3'-HR (CHAPTER 7, TABLE 706.4) NOTE a: IN TYPE II CONSTRUCTION, WALLS SHALL BE PERMITTED TO HAVE A 2-HOUR FIRE-RESISTANCE RATING.  - HORIZONTAL EXIT: 2 HR. (CHAPTER 10, SECTION 1026.2)  - EXIT ENCLOSURES: (STAIR) (< 4 STORIES) 1-HR. SEPARATION (CHAPTER 10, SECTION 1023.2) NOT APPLICABLE  - EXIT ACCESS CORRIDOR: 0 HR WITH APPROVED SPRINKLER (CHAPTER 10, TABLE 1020.1)	REFER TO 2015 INTERNATIONAL BUILDING CODE

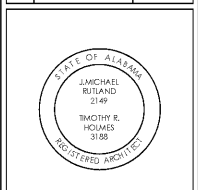


TOTAL LOWER LEVEL  
4,696 GSF

**LOWER FLOOR LIFE SAFETY PLAN (BASE BID / ALTERNATE)**  
 SCALE: 1/8" = 1'-0"

NOTE:  
1. CONTRACTOR TO VERIFY EXISTING EXIT LIGHTS, F.E. AND/OR F.E.C. CABINETS, IN AREA OF WORK TO BE PERFORMED, TO COMPLY WITH NFPA 10 STANDARD FOR PORTABLE FIRE EXTINGUISHERS AND IBC 2012, SECTION 906, TO THE MOST STRINGENT CODE CRITERIA.

No.	Revision	Date
-	-	00/00/00



**JMR Architecture, PC**  
 448 Oakley Avenue  
 Suite 5000  
 Montgomery, AL 36104  
 Phone: (334) 420-5672  
 Fax: (334) 420-5662  
 JMR-H Project Number: 19-998  
 Drawn By: DT

**Auburn University Building  
 Ham Wilson Arena Renovations  
 Project Number 19-451**

**SHEET TITLE:**  
 LOWER FLOOR  
 LIFE SAFETY  
 PLAN

**DRAWN BY:**  
LA  
**CHECKED BY:**  
JC  
**DATE:**  
JANUARY 21, 2021  
**FILE NUMBER:**  
-  
**PROJECT NUMBER:**  
19-451  
**SHEET NUMBER:**

LS1.1

2 of 61