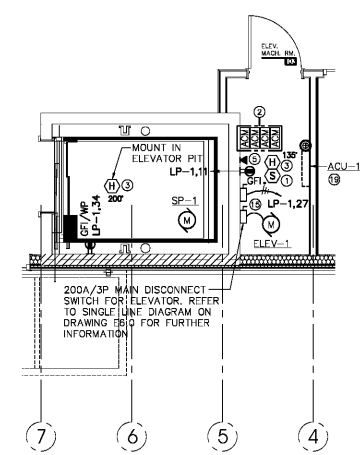
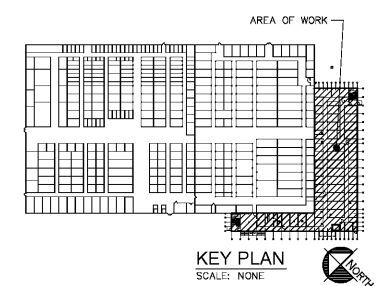


1 FIRST FLOOR PLAN - POWER AND SYSTEMS
E1.0 SCALE: 1/8" = 1'-0"

- ① DRAWING NOTES:**
- UPON ACTIVATION, PROGRAM SMOKE DETECTOR TO RECALL ELEVATOR TO ALTERNATE FLOOR.
 - PROVIDE FIRE ALARM ADDRESSABLE MODULES FOR THE FOLLOWING FUNCTIONS:
 - PRIMARY LEVEL ELEVATOR RECALL
 - ALTERNATE LEVEL ELEVATOR RECALL
 - ELEVATOR POWER SHUT DOWN
 - ELEVATOR "FIRE HAT" ILLUMINATION
 - UPON ACTIVATION, HEAT DETECTOR SHALL INITIATE ELEVATOR POWER SHUTDOWN. INSTALL WITHIN 2'-0" OF SPRINKLER HEAD.
 - (2) DEDICATED TELEPHONE LINES FOR FIRE ALARM PANEL.
 - DEDICATED TELEPHONE OUTLET FOR ELEVATOR.
 - FAN COIL UNIT SUSPENDED FROM STRUCTURE.
 - PROVIDE FIRE ALARM ADDRESSABLE MODULE TO MONITOR ELEVATOR SHUNT-TRIP 120-VOLT CONTROL PANEL. ACTIVATION SHALL PROVIDE SUPERVISORY SIGNAL AT FIRE ALARM CONTROL PANEL.
 - PROVIDE 15A/1P, 120-VOLT CIRCUIT FOR 125A/3P ELEVATOR SHUNT-TRIP CIRCUIT BREAKER.
 - 2-INCH EMPTY PVC CONDUIT WITH PULL ROPE FOR TELEPHONE SERVICE.
 - WIRE EMERGENCY LIGHTS AHEAD OF LOCAL SWITCH OR OCCUPANCY SENSOR.
 - WIRE ALL EXIT SIGNS TOGETHER WITH 2#10, 1#10GND IN 3/4" TO PANEL LP-1 CIRCUIT #4.
 - UP TO SECOND FLOOR STAIRCASE LIGHTING.
 - MOUNT LIGHT, LIGHTED TOGGLE SWITCH AND GFI RECEPTACLE IN ELEVATOR PIT PER ELEVATOR MANUFACTURER RECOMMENDATIONS.
 - PROVIDE FIRE ALARM ADDRESSABLE MODULE FOR FIRE PROTECTION FLOW AND TAMPER SWITCHES AS SHOWN.
 - PROVIDE 30A/2P, 240V NON-FUSED DISCONNECT FOR 120V ELEVATOR FAN AND LIGHT.
 - 2#10, 1#10GND IN 3/4".
 - FOR AUTOMATIC DOOR OPERATOR.
 - CONNECT TO SPRINKLER SYSTEM TO ANNUNCIATE WATER FLOW.
 - PROVIDE A RECEPTACLE TO SERVICE GARAGE DOOR OPENER FOR HANDICAP ACCESSIBLE UNITS. COORDINATE POWER REQUIREMENTS WITH EXACT EQUIPMENT INSTALLATION. CONSULT MANUFACTURER FOR OPERATIONAL DOOR OPERATIONAL SYSTEMS SHALL BE PROVIDED WITH BATTERY BACK-UP.
 - COORDINATE LOCATION OF KEYPAD WITH OWNER. PROVIDE POWER FOR KEYPAD. COORDINATE REQUIREMENTS WITH MANUFACTURER.



2 ENLARGED FLOOR PLAN - POWER AND SYSTEMS
E1.0 SCALE: 1/4" = 1'-0"



KEY PLAN
SCALE: NONE

KEVIN R. O'DONNELL, PE
10225 Main Street
Clarence, New York 14031
Phone: (716) 803-8787
Fax: (716) 407-6552 Project # 20-11-02

ISSUE	DATE	REVISIONS
1	11FEB2021	ISSUED FOR CLIENT REVIEW
2	18MAR2021	ISSUED FOR BID
3		
4		
5		
6		
7		
8		
9		
10		
11		
12		
13		
14		
15		
16		
17		
18		
19		
20		
21		
22		
23		
24		
25		
26		
27		
28		
29		
30		
31		
32		
33		
34		
35		
36		
37		
38		
39		
40		
41		
42		
43		
44		
45		
46		
47		
48		
49		
50		
51		
52		
53		
54		
55		
56		
57		
58		
59		
60		
61		
62		
63		
64		
65		
66		
67		
68		
69		
70		
71		
72		
73		
74		
75		
76		
77		
78		
79		
80		
81		
82		
83		
84		
85		
86		
87		
88		
89		
90		
91		
92		
93		
94		
95		
96		
97		
98		
99		
100		

LIFE STORAGE, INC.
Life Storage #497
5800 Brookshire Blvd. · Charlotte, NC 28216

FIRST FLOOR PLAN
- POWER AND SYSTEMS
E1.0
DRAWN BY: KVO
SCALE: AS NOTED
DATE: 14SEP2020
JOB NUMBER: 3771

tmm
architect
MICHAEL P. MCCRELL, OIA
8110A S. NEW YORK PIKE, SUITE 100
DURHAM, NC 27706
716.883.4245
www.tmmarchitect.com

THIS PLAN IS UNLESS OTHERWISE SPECIFIED, ALL DOCUMENTS ON ELECTRONIC MEDIA SHALL BE CONSIDERED TO BE THE ORIGINAL DOCUMENTS. THE ORIGINAL DOCUMENTS SHALL REMAIN THE PROPERTY OF TMM ARCHITECT. THE ORIGINAL DOCUMENTS SHALL BE KEPT IN THE ARCHITECT'S OFFICE FOR A PERIOD OF 10 YEARS FROM THE DATE OF COMPLETION OF THE PROJECT. ANY REVISIONS TO THIS PLAN SHALL BE INDICATED BY A REVISION CIRCLE AND NUMBER. ANY REVISIONS TO THIS PLAN SHALL BE INDICATED BY A REVISION CIRCLE AND NUMBER. ANY REVISIONS TO THIS PLAN SHALL BE INDICATED BY A REVISION CIRCLE AND NUMBER.

Order Plans @ WWW.LDILine.com