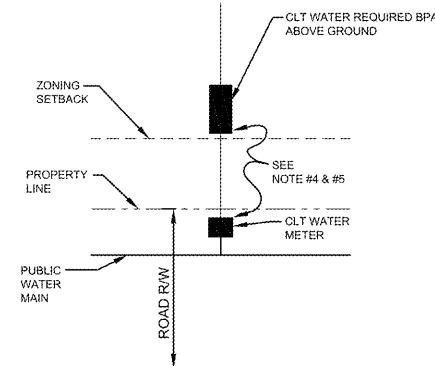
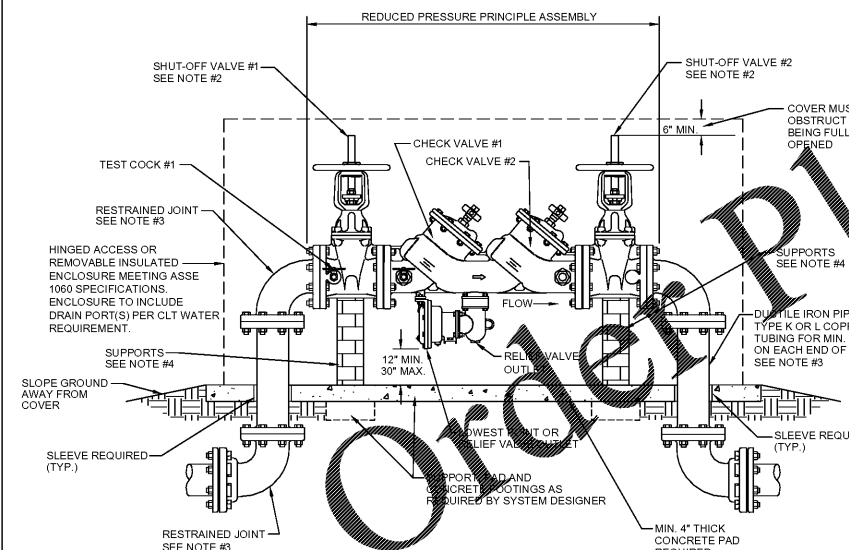


- NOTES:
- BACKFLOW PREVENTION ASSEMBLIES (BPA's) SHALL CONFORM TO CLT WATER SPECIFICATIONS. SHUT-OFF VALVES ARE SPECIFIC TO EACH APPROVED BPA AND NO SUBSTITUTIONS OF SHUT-OFF VALVES ARE PERMITTED. REFER TO CLT WATER APPROVED LIST OF BPAs.
 - PIPE MATERIAL AND FITTINGS SHALL BE AS SPECIFIED IN CLT WATER STANDARDS & SPECIFICATIONS. IF USING PVC PIPE / FITTINGS, VERTICAL SUPPORT IS REQUIRED AND HORIZONTAL BRACING IS RECOMMENDED.
 - INSULATED ENCLOSURE SHALL BE AS SPECIFIED IN CLT WATER ENCLOSURE INFORMATION - HEATED INSULATED ENCLOSURE IS RECOMMENDED. NO INSULATION SHALL BE WRAPPED AROUND BPA.
 - ALL LOCATIONS FOR BPAs REQUIRE CLT WATER APPROVAL AND MUST BE OUTSIDE OF ZONING SET-BACK DIRECTLY BEHIND METER.
 - THERE SHALL BE NO TAPS, PIPING BRANCHES, UNAPPROVED BYPASS PIPING, HYDRANTS, FIRE DEPT. CONNECTION POINTS, OR OTHER WATER-USING APPURTENANCES CONNECTED TO THE SUPPLY LINE BETWEEN ANY WATER METER AND ITS CLT WATER - REQUIRED BACKFLOW PREVENTER.
 - EACH CLT WATER-REQUIRED BPA IS REQUIRED TO BE TESTED BY A CLT WATER - APPROVED CERTIFIED TESTER PRIOR TO PLACING THE WATER SYSTEM IN SERVICE. TEST RESULTS SHALL BE SUBMITTED TO CLT WATER WITHIN 30 DAYS AND TESTED ANNUALLY THEREAFTER SUBMITTING RESULTS TO CLT WATER.
 - ALL INSTALLATIONS INTENDED FOR ADDRESSING CLT WATER REQUIREMENTS, REQUIRE PRIOR APPROVAL FROM THE APPROPRIATE CLT WATER BACKFLOW INSPECTOR.

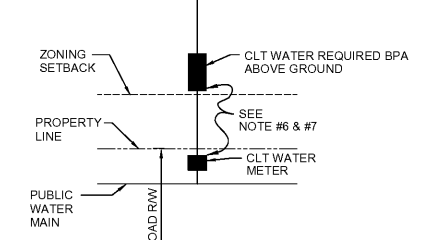


TYPICAL LOCATION REQUIREMENT FOR ABOVE GROUND INSTALLATION N.T.S.

NO SCALE
STANDARD NO. 13
DATE: 5.3.2016
CHARLOTTE WATER BACKFLOW PREVENTION
REDUCED PRESSURE PRINCIPLE ASSEMBLY (RP) 3/4" - 1" ABOVE GROUND



- NOTES:
- BACKFLOW PREVENTION ASSEMBLIES (BPA's) SHALL CONFORM TO CLT WATER SPECIFICATIONS. SHUT-OFF VALVES ARE SPECIFIC TO EACH APPROVED BPA AND NO SUBSTITUTIONS OF SHUT-OFF VALVES ARE PERMITTED. REFER TO CLT WATER APPROVED LIST OF BPAs.
 - FIRE LINE SERVICES SHALL HAVE OUTSIDE STEM AND YOKE (OS & Y) HANDWHEEL OPERATORS OR BUTTERFLY VALVES, AND LISTED ON APPROVED LIST AS FIRE APPROVED. IF SERVING FIRE SINKS, TAMPERS SWITCHES ARE REQUIRED.
 - PIPE MATERIAL AND FITTINGS SHALL BE AS SPECIFIED IN CLT WATER STANDARDS SPECIFICATION. ALL JOINTS SHALL BE RESTRAINED WITH MEGALUG RESTRAINTS OR APPROVED EQUIVALENT.
 - SUPPORT OF ASSEMBLY SHALL BE DESIGNED BY OWNER, 8" - 12" SHALL BE SUPPORTED AT EACH VALVE AND SHALL NOT BLOCK RELIEF VALVE ON DRAIN PORT.
 - INSULATED ENCLOSURE SHALL BE AS SPECIFIED IN CLT WATER ENCLOSURE INFORMATION - HEATED INSULATED ENCLOSURE ARE REQUIRED FOR FIRE LINE SERVICES. NO INSULATION SHALL BE WRAPPED AROUND BPA.
 - ALL LOCATIONS FOR BPAs REQUIRE CLT WATER APPROVAL AND MUST BE OUTSIDE OF ZONING SET-BACK DIRECTLY BEHIND METER.
 - THERE SHALL BE NO TAPS, PIPING BRANCHES, UNAPPROVED BYPASS PIPING, HYDRANTS, FIRE DEPT. CONNECTION POINTS, OR OTHER WATER - USING APPURTENANCES CONNECTED TO THE SUPPLY LINE BETWEEN ANY WATER METER AND ITS CLT WATER - REQUIRED BACKFLOW PREVENTER.
 - EACH CLT WATER-REQUIRED BPA IS REQUIRED TO BE TESTED BY A CLT WATER - APPROVED CERTIFIED TESTER PRIOR TO PLACING THE WATER SYSTEM IN SERVICE. TEST RESULTS SHALL BE SUBMITTED TO CLT WATER WITHIN 30 DAYS AND TESTED ANNUALLY THEREAFTER SUBMITTING RESULTS TO CLT WATER.
 - ALL INSTALLATIONS INTENDED FOR ADDRESSING CLT WATER REQUIREMENTS, REQUIRE PRIOR APPROVAL FROM THE APPROPRIATE CLT WATER BACKFLOW INSPECTOR.



TYPICAL LOCATION REQUIREMENT FOR ABOVE GROUND INSTALLATION N.T.S.

NO SCALE
STANDARD NO. 2
DATE: 5.3.2016
CHARLOTTE WATER BACKFLOW PREVENTION
REDUCED PRESSURE PRINCIPLE ASSEMBLY (RP) 2 1/2" - 12" ABOVE GROUND

WWW.LDILine.com

Order Plans

PRELIMINARY DRAWINGS - NOT FOR CONSTRUCTION

WK DICKSON
community infrastructure consultants
1320 MAIN STREET
SUITE 400
COLUMBIA, SC 29201
(t)803-786-4261
(f)803-786-4263
WWW.WKDICKSON.COM



NO.	DATE	DESCRIPTION

PROJECT NAME:
LIFE STORAGE #497 - CHARLOTTE SITE IMPROVEMENTS
5600 BROOKSHIRE BLVD., CHARLOTTE NC.
FOR
LIFE STORAGE, INC.
MECKLENBURG COUNTY, NORTH CAROLINA
DRAWING TITLE:
UTILITY DETAILS

PROJ. MGR.: JHE
DESIGN BY: MDJ
DRAWN BY: BAD
PROJ. DATE: MAY 2020
DRAWING NUMBER:
14 OF 19
WKD PROJ. NO.:
20200138.00.GV