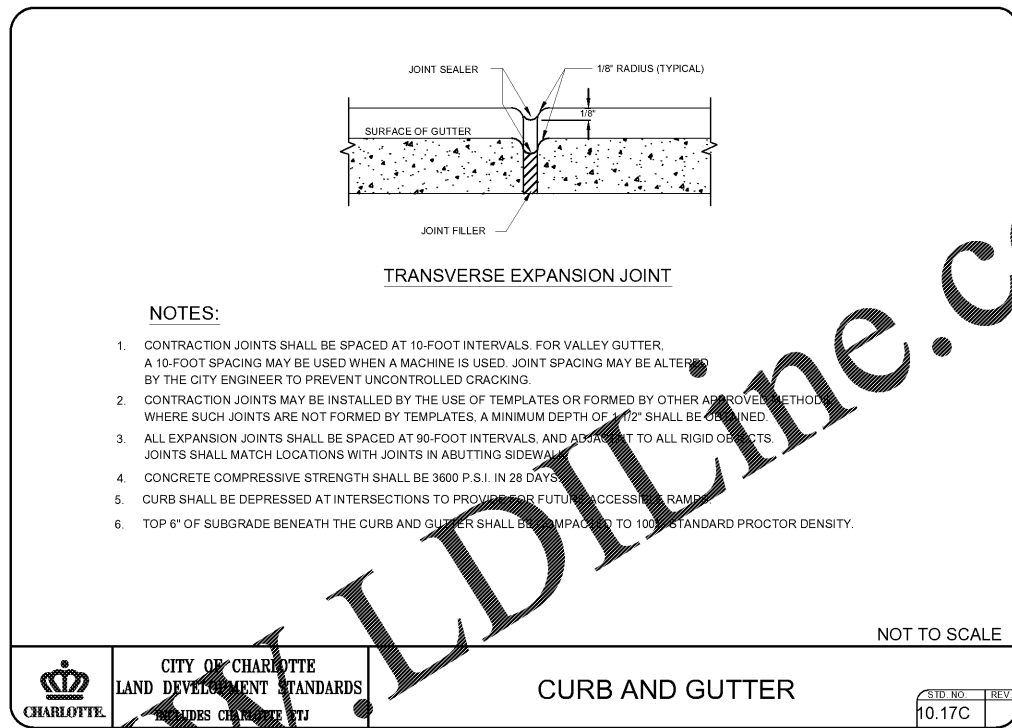
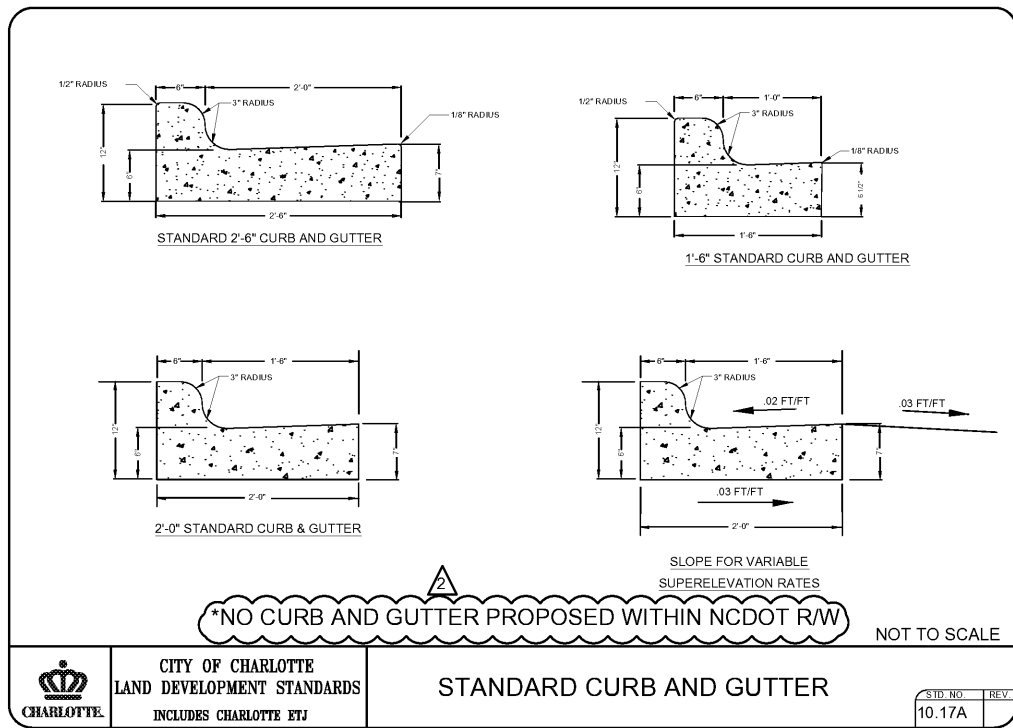
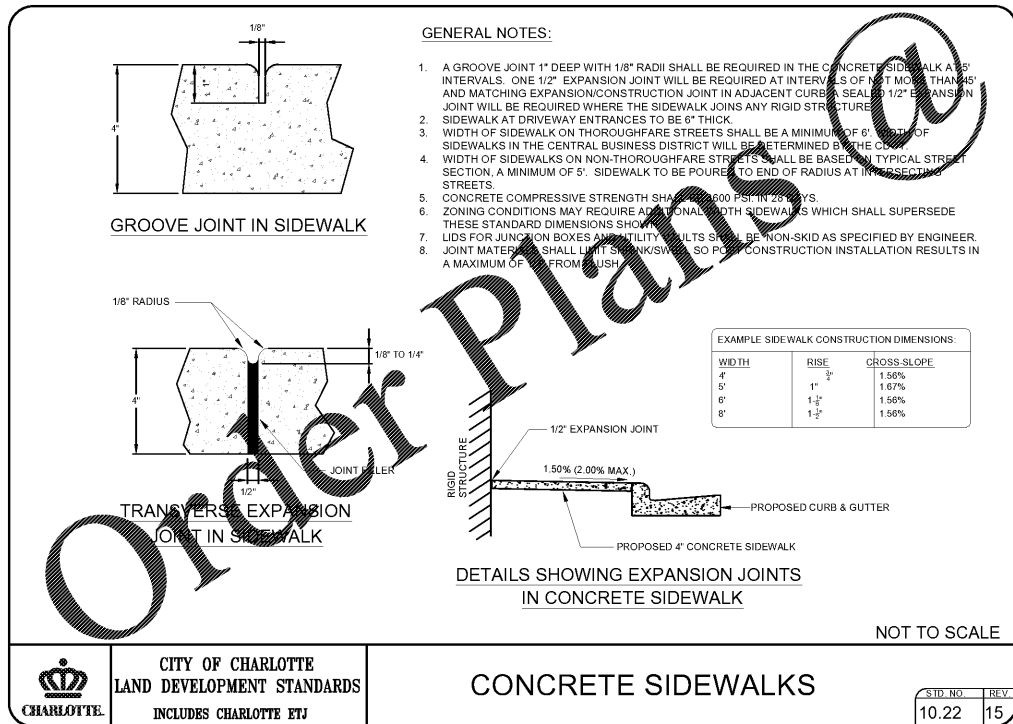


COPYRIGHT © W.K. DICKSON & CO., INC. ALL RIGHTS RESERVED. REPRODUCTION OR USE OF THE CONTENTS OF THIS DOCUMENT, INCLUDING OR EXCEPTING THEREFROM, IN ANY MANNER WITHOUT THE WRITTEN PERMISSION OF W.K. DICKSON & CO., INC. IS PROHIBITED. THE DESIGN OF THIS DOCUMENT IS THE PROPERTY OF W.K. DICKSON & CO., INC. AND IS NOT TO BE REPRODUCED OR TRANSMITTED IN ANY FORM OR BY ANY MEANS, ELECTRONIC OR MECHANICAL, INCLUDING PHOTOCOPYING, RECORDING, OR BY ANY INFORMATION STORAGE AND RETRIEVAL SYSTEM, WITHOUT THE WRITTEN PERMISSION OF W.K. DICKSON & CO., INC.



- NOTES:**
- CONTRACTION JOINTS SHALL BE SPACED AT 10-FOOT INTERVALS FOR VALLEY GUTTER. A 10-FOOT SPACING MAY BE USED WHEN A MACHINE IS USED. JOINT SPACING MAY BE ALTERED BY THE CITY ENGINEER TO PREVENT UNCONTROLLED CRACKING.
  - CONTRACTION JOINTS MAY BE INSTALLED BY THE USE OF TEMPLATES OR FORMED BY OTHER APPROVED METHOD. WHERE SUCH JOINTS ARE NOT FORMED BY TEMPLATES, A MINIMUM DEPTH OF 1/2" SHALL BE OBTAINED.
  - ALL EXPANSION JOINTS SHALL BE SPACED AT 90-FOOT INTERVALS, AND ADJUSTED TO ALL RIGID OBJECTS. JOINTS SHALL MATCH LOCATIONS WITH JOINTS IN ADJUTING SIDEWALK.
  - CONCRETE COMPRESSIVE STRENGTH SHALL BE 3600 P.S.I. IN 28 DAYS.
  - CURB SHALL BE DEPRESSED AT INTERSECTIONS TO PROVIDE FOR FUTURE ACCESSIBLE RAMPS.
  - TOP 6" OF SUBGRADE BENEATH THE CURB AND GUTTER SHALL BE COMPACTED TO 100% STANDARD PROCTOR DENSITY.



- GENERAL NOTES:**
- A GROOVE JOINT 1" DEEP WITH 1/8" RADI SHALL BE REQUIRED IN THE CONCRETE SIDEWALK AT 10' INTERVALS. ONE 1/2" EXPANSION JOINT WILL BE REQUIRED AT INTERVALS OF 150 FT MIN. (THAN 245') AND MATCHING EXPANSION/CONSTRUCTION JOINT IN ADJACENT CURB & GUTTER. A 1/2" EXPANSION JOINT WILL BE REQUIRED WHERE THE SIDEWALK JOINS ANY RIGID STRUCTURE.
  - SIDEWALK AT DRIVEWAY ENTRANCES TO BE 6" THICK.
  - WIDTH OF SIDEWALK ON THOROUGHFARE STREETS SHALL BE A MINIMUM OF 6' WITH 4' OF SIDEWALKS IN THE CENTRAL BUSINESS DISTRICT WILL BE DETERMINED BY THE CITY ENGINEER.
  - WIDTH OF SIDEWALKS ON NON-THOROUGHFARE STREETS SHALL BE BASED ON TYPICAL STREET SECTION. A MINIMUM OF 5' SIDEWALK TO BE POURED TO END OF RADIUS AT INTERSECTIONS ON STREETS.
  - CONCRETE COMPRESSIVE STRENGTH SHALL BE 3600 P.S.I. IN 28 DAYS.
  - ZONING CONDITIONS MAY REQUIRE ADDITIONAL WIDTH SIDEWALKS WHICH SHALL SUPERSEDE THESE STANDARD DIMENSIONS SHOWN.
  - LIDS FOR JUNCTION BOXES AND UTILITY RESULTS SHALL BE NON-SKID AS SPECIFIED BY ENGINEER.
  - JOINT MATERIAL SHALL LIMIT SPALLING/SLURRY SO POST CONSTRUCTION INSTALLATION RESULTS IN A MAXIMUM OF 1/8" FROM JOINT.
- | WIDTH | RISE   | CROSS-SLOPE |
|-------|--------|-------------|
| 4'    | 3/4"   | 1.56%       |
| 5'    | 1"     | 1.67%       |
| 6'    | 1 1/4" | 1.56%       |
| 8'    | 1 3/4" | 1.56%       |

community infrastructure consultants  
 1320 MAIN STREET  
 SUITE 400  
 COLUMBIA, SC 29201  
 (t)803-786-4261  
 (f)803-786-4263  
 WWW.WKDICKSON.COM

PROFESSIONAL SEAL

NO.	REVISION RECORD	DATE	DESCRIPTION
2.	07/04/2021 REVISIONS PER NCDOT & DUKE ENERGY COMMENTS		

**PRELIMINARY DRAWINGS - NOT FOR CONSTRUCTION**

PROJECT NAME: LIFE STORAGE #497 - CHARLOTTE SITE IMPROVEMENTS  
 5800 BROOKSHIRE BLVD., CHARLOTTE, NORTH CAROLINA 28216  
 FOR LIFE STORAGE, INC.  
 CITY OF CHARLOTTE, NORTH CAROLINA

DRAWING TITLE: SITE DETAILS - SHEET 1

PROJ. MGR.:	JHE
DESIGN BY:	MDJ
DRAWN BY:	BAD
PROJ. DATE:	MAY 2020
DRAWING NUMBER:	

7 OF 19

WKD PROJ. NO.: 20200138.00.GV

WWW.LDIDLine.com