

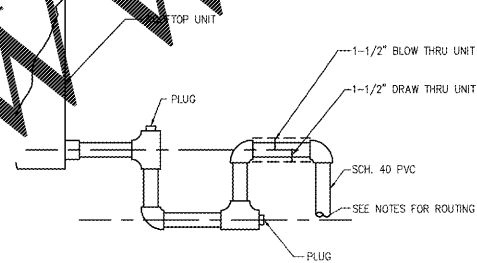
MECHANICAL GENERAL NOTES:

- PRIOR TO SUBMITTING BID, CONTRACTOR SHALL VISIT PROJECT AND REVIEW EXISTING CONDITIONS. NO ADDITIONAL MONIES WILL BE AWARDED FOR "UNFORESEEN PROJECT CONDITIONS". CONTRACTOR SHALL INCLUDE IN HIS BID ALL MONIES REQUIRED FOR THE EXISTING PROJECT CONDITIONS. CONTRACTOR SHALL INFORM ARCHITECT AT TIME OF BID PROJECT CONDITIONS IN WHICH HE HAS DIFFICULTY IN WORKING AROUND.
- REFER TO ALL OTHER DRAWINGS IN THIS PROJECT, INCLUDING TO BUT NOT LIMITED TO THE ARCHITECTURAL, INTERIOR DESIGN, LIGHTING DESIGN, AND ELECTRICAL AND PERFORM ALL SCOPE ITEMS IDENTIFIED WITHIN THOSE DRAWINGS AS IF THEY ARE DIRECTLY INCORPORATED INTO THE MECHANICAL SET.
- FURNISH AND INSTALL ALL NECESSARY LABOR AND MATERIALS FOR A COMPLETE SYSTEM. ANY ITEMS AND MATERIALS OBVIOUSLY NECESSARY FOR A COMPLETE WORKING SYSTEM ALTHOUGH NOT SHOWN WITHIN THESE DOCUMENTS SHALL BE PROVIDED AS PART OF THE INITIAL BID.
- WORKMANSHIP AND MATERIALS SHALL BE IN ACCORDANCE WITH STATE AND LOCAL REQUIREMENTS.
- OBTAINING PERMIT, INCLUDING LABOR AND FEES SHALL BE PROVIDED AS PART OF THE INITIAL BID.
- DRAWINGS ARE GENERALLY DIAGRAMMATIC AND DO NOT NECESSARILY SHOW FITTINGS AND OTHER SMALL ITEMS REQUIRED FOR A COMPLETE INSTALLATION. INSTALL DUCTWORK, EQUIPMENT AND CONTROLS IN A MANNER TO MINIMIZE NOISE, PROVIDE APPROPRIATE MAINTENANCE CLEARANCE IN THE SPACE ALLOCATED.
- MATERIALS AND LABOR SHALL BE WARRENTED FOR ONE YEAR AFTER TAKEOVER.
- ALL DUCTWORK SHALL BE GALVANIZED AND INSTALLED IN ACCORDANCE WITH SMACNA GUIDELINES, LATEST EDITIONS.
- PRIOR TO ORDERING ANY EQUIPMENT, THIS CONTRACTOR SHALL PROVIDE COORDINATION TO THE ELECTRICAL SUBCONTRACTOR AND STRUCTURAL REQUIREMENTS TO THE GENERAL CONTRACTOR. ANY COSTS DIFFERENCES WILL BE WORKED THROUGH THE GENERAL CONTRACTOR AT THIS TIME. PROVIDE TO THE ELECTRICAL SUBCONTRACTOR THE PHASE, AMPERAGE AND VOLTAGE OR EACH PIECE OF EQUIPMENT PRIOR TO ORDERING.
- CONTRACTOR SHALL REFER TO THE ELECTRICAL DRAWINGS, LIGHTING DESIGN DRAWINGS AND THE REFLECTED CEILING PLAN (RCP) WHEN INSTALLING THE CEILING DIFFUSERS AND RETURN GRILLS.
- COORDINATE WITH THE ELECTRICAL SUBCONTRACTOR IN REGARDS TO DISCONNECTS, BREAKERS, POWER WIRING, MOTOR CONTROL DEVICES, MECHANICAL CONTRACTOR SHALL PROVIDE STARTERS, TRANSFORMERS, ETC AND COORDINATE THE INSTALLATION WITH THE ELECTRICAL SUBCONTRACTOR.
- PROVIDE UL LISTED, HEAVY DUTY FIBERGLAS CONNECTOR AT FAN, AIRHANDLERS, FAN COIL UNITS, ROOFTOP UNITS AND OTHER MECHANICAL EQUIPMENT WHERE THEY CONNECT TO SHEET METAL DUCTWORK. THE FIBERGLAS CONNECTOR SHALL BE INSTALLED WITH APPROPRIATE LENGTH TO ALLOW FOR VIBRATION AND NOISE TRANSMISSION.
- DUCTWORK SHALL BE GALVANIZED SHEET METAL IN ACCORDANCE WITH SMACNA GUIDELINES.
- ROUND FLEXIBLE CONNECTORS SHALL BE PROVIDED BETWEEN MAIN DUCT AND DIFFUSERS. PROVIDE THERMAFLEX PRO SERIES. UTILIZE SPIN-IN CONNECTORS WITH SCOOP AND ADJUSTABLE DAMPER FOR AIR CONTROL.
- FLEXIBLE DUCTWORK SHALL BE INSTALLED WITHOUT KINKS AND SHALL BE LIMITED TO 8'-0" IN LENGTH. DIAMETER SHALL BE THE SAME AS THE DIFFUSER NECK.
- ALL PORTIONS OF DUCTWORK VISIBLE THROUGH DIFFUSER AND RETURN GRILL OPENINGS SHALL BE PAINTED FLAT BLACK. ALL PORTIONS EXPOSED IN AREAS WITHOUT CEILING SHALL BE PAINTED PER THE ARCHITECTURAL DRAWING.
- CONTRACTOR SHALL VERIFY SPACE REQUIREMENTS FOR DUCTWORK PRIOR TO MANUFACTURING. ADJUSTMENTS TO DUCT SIZE IS ACCEPTABLE AS LONG AS THE FOLLOWING FACTORS ARE MAINTAINED:
 SUPPLY: 0.08"/100FT
 RETURN: 0.06"/100FT.
- ALL THERMOSTATS UNLESS OTHERWISE NOTED SHALL BE INSTALLED AT 4'-0" AFF. REFER TO INTERIOR DESIGN DRAWINGS FOR ACTUAL LOCATIONS.
- ALL DUCT DIMENSIONS SHOWN IN THIS SET REFERS TO CLEAR INSIDE DIMENSION. IF DUCTWORK IS LINED, INTERIOR SHEET METAL SIZE SHALL BE INCREASED TO ACCOUNT FOR THE LINEAR THICKNESS.
- THE OWNER, OPERATOR, ARCHITECTURAL NOR ENGINEER ARE RESPONSIBLE FOR THE CONTRACTOR'S SAFETY PRECAUTIONS, MEANS AND METHODS, WORK TECHNIQUES, CONSTRUCTION SEQUENCE OR PROCEDURES REQUIRED TO COMPLETE THE WORK.
- ALL EXTERIOR WALL AND ROOF PENETRATIONS SHALL BE SEALED WITH WATERPROOFING.
- ALL PENETRATIONS THROUGH FIRE RATED WALLS, FLOORS OR BARRIERS SHALL BE SEALED WITH FIREPROOFING.
- PROVIDE FIRE DAMPERS (FD) IN ALL FIRE RATED WALLS AS IDENTIFIED ON ARCHITECTURAL DRAWINGS. THE RATINGS OF THE FIRE DAMPERS SHALL MEET OR EXCEED THE RATING OF THE WALL IN WHICH IT IS INSTALLED. FIRE DAMPERS SHALL BE UL LISTED AND SHALL BE TYPE B (BLADES OUT OF THE AIR STREAM) OR TYPE C (100% FREE AREA). PROVIDE AND INSTALL DUCT MOUNTED ACCESS PANEL FOR ALL NON-ACCESSIBLE FIRE DAMPERS.
- ALL ACCESS PANELS REQUIRED FOR EQUIPMENT MAINTENANCE SHALL BE FIELD COORDINATED WITH ARCHITECT. THESE DRAWINGS SHALL APPROXIMATE LOCATIONS, FINAL LOCATIONS SHALL BE COORDINATED IN THE FIELD.
- AT EACH BRANCH TAKEOFF, PROVIDE MANUAL VOLUME DAMPERS FOR BALANCING. FOR EACH DIFFUSER TAKEOFF, PROVIDE ADJUSTABLE SPIN-IN CONNECTION.
- PROVIDE DUCT LINER FOR THE FIRST TEN FEET OF SUPPLY AND THE LAST TO FEET OF RETURN DUCTWORK FROM THE HVAC EQUIPMENT. THE REMAINING DUCTWORK SHALL BE WRAPPED WITH INSULATION. DUCT WRAP SHALL BE FOL SCRM KRAFT (FSK) VAPOR RETARDER FACING WITH AN R VALUE OF 6.0.
- ALL THERMOSTATS SHALL BE 7-DAY PROGRAMMABLE AND HAVE A 4 DEGREE DEADBAND.
- ALL MATERIAL INSTALLED WITHIN A RETURN AIR PLENUM SHALL HAVE A FLAME SPREAD INDEX OF NOT MORE THAN 25 AND A SMOKE DEVELOPED INDEX OF NOT MORE THAN 50.
- ALL WIRING INSTALLED WITHIN THE PLENUM SHALL BE PLENUM RATED OR INSTALLED WITHIN CONDUIT.
- ALL EQUIPMENT INSTALLED ABOVE THE CEILING SHALL BE ACCESSIBLE. CONTRACTOR SHALL SUPPLY ACCESS PANELS IN CEILING OR WALL AND SHALL COORDINATE WITH ARCHITECT FOR PROPER LOCATION. ACCESS PANELS IN CEILING SHALL BE A MINIMUM OF 24"x24" WITH HINGES. ACCESS PANELS SHALL HAVE SAME FIRE RATING AS CEILING IN WHICH THEY ARE INSTALLED.
- EACH PIECE OF EQUIPMENT SHALL BE PERMANENTLY LABELED WITH A NAMEPLATE OF SUFFICIENT SIZE TO CLEARLY INDICATE THE EQUIPMENT DESIGNATION IN ACCORDANCE WITH THE DRAWINGS (IE P-1, R-1, R-2, ETC.). NAMEPLATES TO BE BAKED ENAMEL OR ALUMINUM WITH STAMPED LETTERS.
- EACH DUCT OR PIPE WHICH PENETRATES ANY FIRE OR SMOKE PARTITION SHALL HAVE THE WALL OPENING SEALED WITH HILTI FIRE STOP TO PREVENT THE SPREAD OF SMOKE.
- ANY EXISTING FLOOR, OR CEILING SURFACE DISTURBED DURING THE COURSE OF CONSTRUCTION, SHALL BE REPAIRED TO LIKE NEW OR PREVIOUS CONDITION TO THE SATISFACTION OF THE ARCHITECT.
- MANUFACTURERS LISTED IN THE SCHEDULES AND DRAWINGS INDICATE A BASIS OF DESIGN. OTHER MANUFACTURERS WHICH PROVIDE PRODUCTS EQUAL TO THE BASIS OF DESIGN MAY BE USED. FINAL DECISION TO DECIDE IF A PRODUCT IS EQUAL IS BY OWNER.

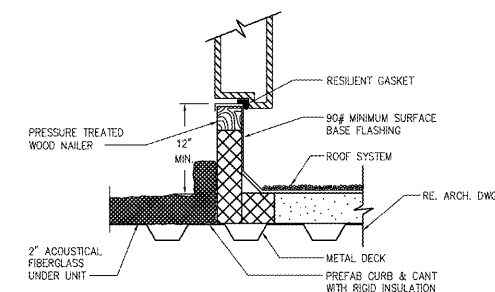
RTU SCHEDULE

MARK	CFM	MIN OA CFM	ESP IN WC	HP	COOLING CAP.		HEATING CAP.		BASIS OF DESIGN	MIN SEER /EER	STD. WEIGHT	NOTES
					TOTAL	SEN	INPUT	OUT				
RTU-1	3000	800	1.0	1.5	93.3	72.2	180.0	148.0	CARRIER 48HC-DOB	12.0 EER	925 LB	①
RTU-2	3000	400	1.0	1.5	93.3	72.2	180.0	148.0	CARRIER 48HC-DOB	12.0 EER	925 LB	①②

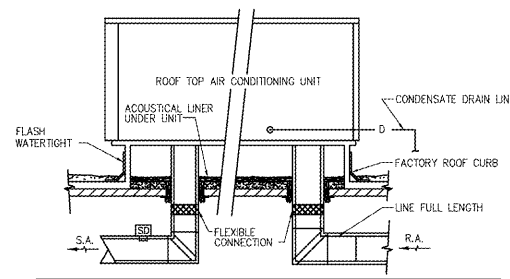
- COORDINATE ELECTRICAL REQUIREMENTS WITH ELECTRICAL CONTRACTOR PRIOR TO PLACING ORDER FOR EQUIPMENT. PROVIDE ROOF CURB, MANUAL OUTSIDE AIR DAMPER AND PROGRAMMABLE THERMOSTAT.
- PROVIDE SMOKE DETECTOR IN THE SUPPLY AIR STREAM AFTER THE OUTSIDE AIR CONNECTION ENTERS THE PLenum AND UPSTREAM OF ANY BRANCH CONNECTIONS.



1 Condensate Trap Detail None



2 Rooftop Unit Curb Detail None



3 Rooftop Unit Detail None

Order Plans @ www.LDILine.com

REVISIONS

Date

THIS DOCUMENT, THE IDEAS AND DESIGNS INCORPORATED HEREIN, AS AN INSTRUMENT OF PROFESSIONAL SERVICE IS THE PROPERTY OF WYNN L. WARNER ARCHITECT AND IS NOT TO BE USED, IN WHOLE OR IN PART, FOR ANY OTHER PROJECT WITHOUT THE WRITTEN AUTHORIZATION OF WYNN L. WARNER ARCHITECT

WYNN L. WARNER ARCHITECT
 5292 camden lake parkway
 acworth, GA 30101
 (770)365-6638

DUNKIN DONUTS
 3020 FIVE FORKS TRICKUM ROAD
 LILBURN, GA 30047

Drawn By: WLV
 Checked By: WLV
 Date: OCTOBER XX, 2019
 Job No.:
 Drawing Number



RELEASED FOR CONSTRUCTION

M02