

REVISIONS

Date 1-17-2021
Date 3-23-2021



THIS DOCUMENT, THE IDEAS AND DESIGNS INCORPORATED HEREIN, AS AN INSTRUMENT OF PROFESSIONAL SERVICE, IS THE PROPERTY OF WYNN L. WARNER ARCHITECT AND IS NOT TO BE USED, IN WHOLE OR IN PART, FOR ANY OTHER PROJECT WITHOUT THE WRITTEN AUTHORIZATION OF WYNN L. WARNER ARCHITECT.

WYNN L. WARNER ARCHITECT
2992 CAMDEN LAKE PARKWAY
ACWORTH, GA 30101
(770) 867-6638

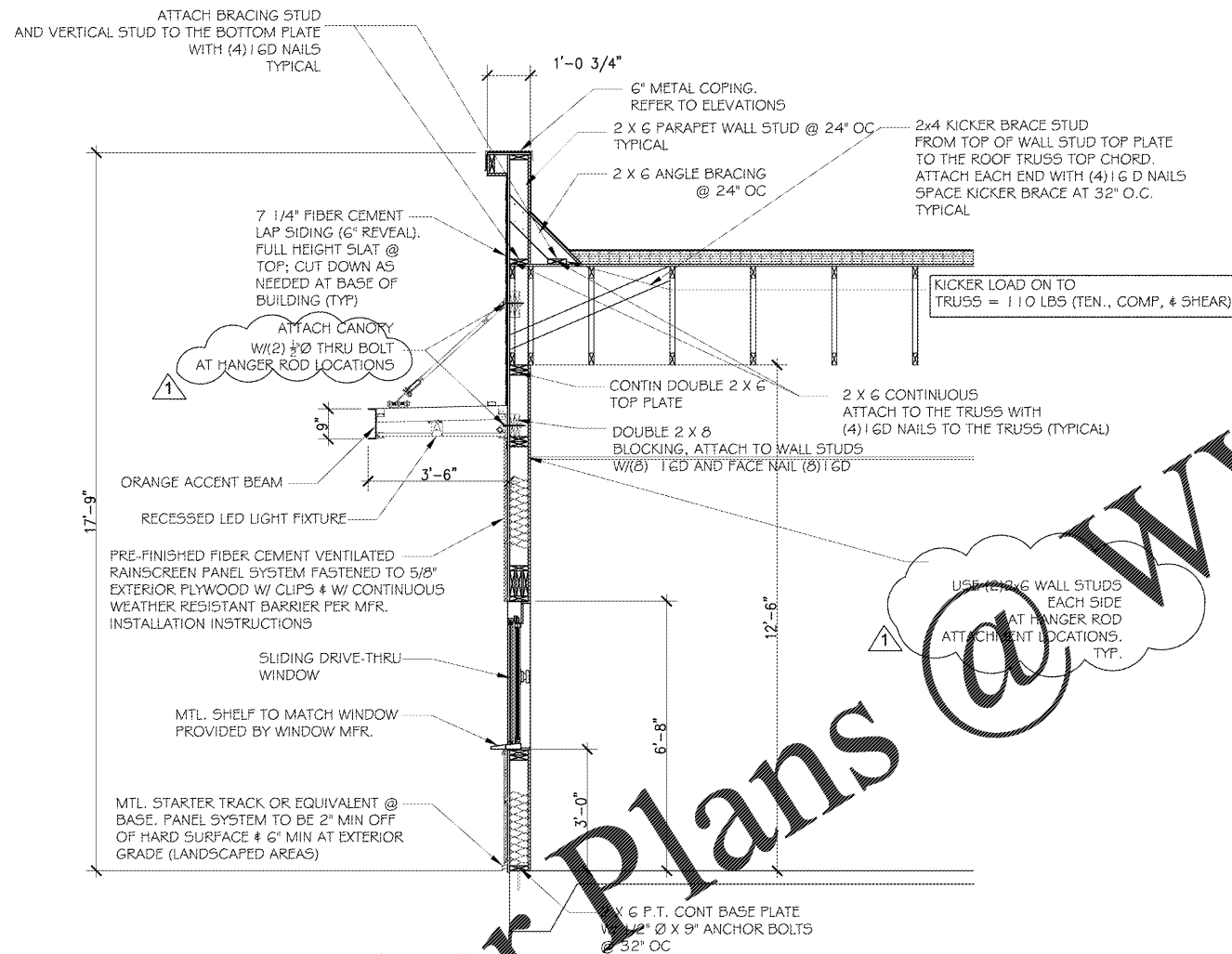
Sai Ram Consultants, Inc.
(Structural Engineers)
1230 Nash Lee Drive,
Lilburn GA 30047
Ph: 678-409-0405
Ph: 404-456-3556
mskukula@gmail.com
www.sai-ram-structural-engineers.com

Revisions:
1-17-2021

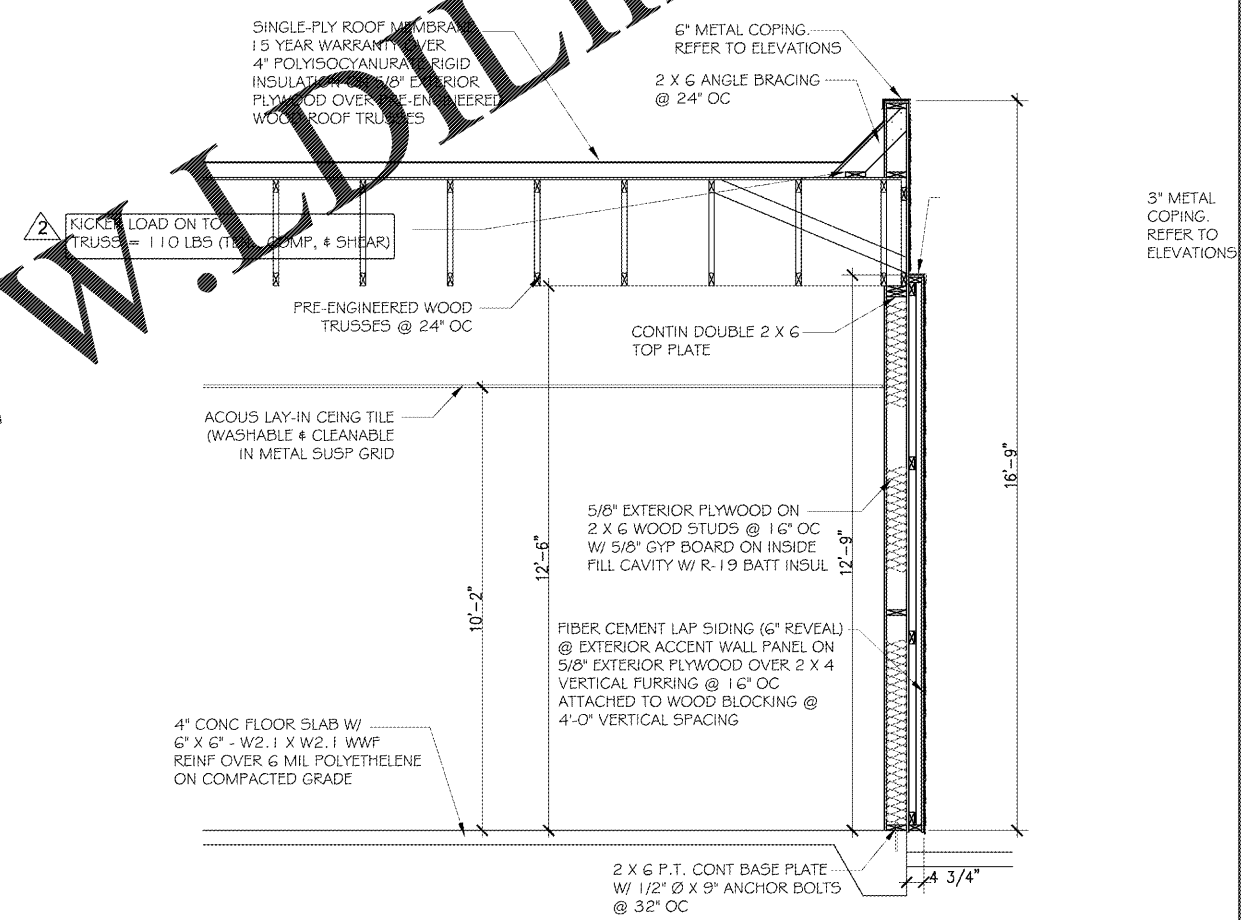
DUNKIN DONUTS
3020 FIVE FORKS TRICKUM ROAD
LILBURN, GA 30047

Drawn By: W/W
Checked By: S/SK
Date: August 3, 2020
Job No.: 2020-2019-113

Drawing Number
S06



2
S06 DETAIL WALL SECTION @ DRIVE-THRU
SCALE: 1/2" = 1'-0"



1
S06 DETAIL WALL SECTION @ SIGNAGE WALL
SCALE: 1/2" = 1'-0"

RELEASED FOR CONSTRUCTION