

REVISIONS

Date



THIS DOCUMENT, THE IDEAS AND DESIGNS INCORPORATED HEREIN, AS AN INSTRUMENT OF PROFESSIONAL SERVICE IS THE PROPERTY OF WYNN L. WARNER ARCHITECT AND IS NOT TO BE USED, IN WHOLE OR IN PART, FOR ANY OTHER PROJECT WITHOUT THE WRITTEN AUTHORIZATION OF WYNN L. WARNER ARCHITECT

WYNN L. WARNER ARCHITECT
5292 CAMDEN LAKE PARKWAY
ACWORTH, GA 30101
(770) 467-6638

DUNKIN DONUTS
3020 FIVE FORKS TRICKUM ROAD
LILBURN, GA 30047

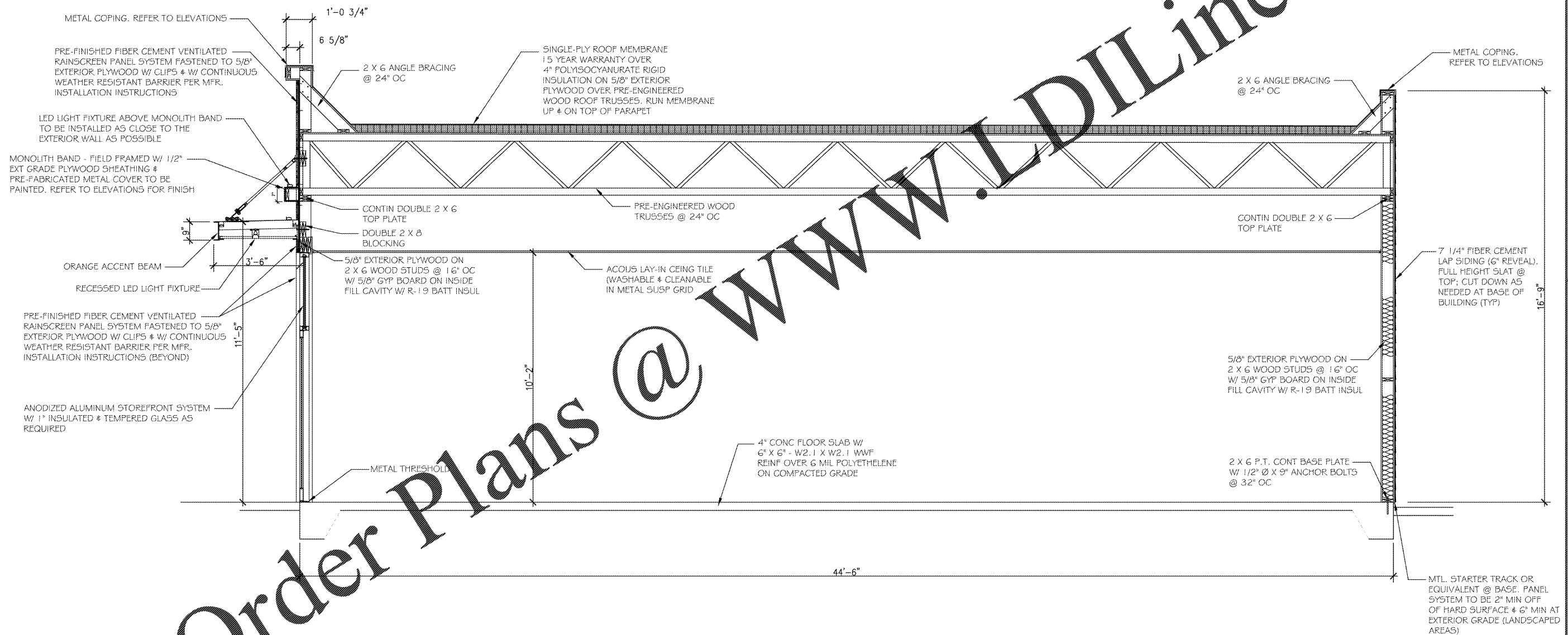
Drawn By: WLW
Checked By: WLW
Date: OCTOBER 1, 2020
Job No.:

Drawing Number

A06

RELEASED FOR CONSTRUCTION

Order Plans @ www.LDILine.com



1 TYPICAL BUILDING SECTION
A06 SCALE: 1/2" = 1'-0"