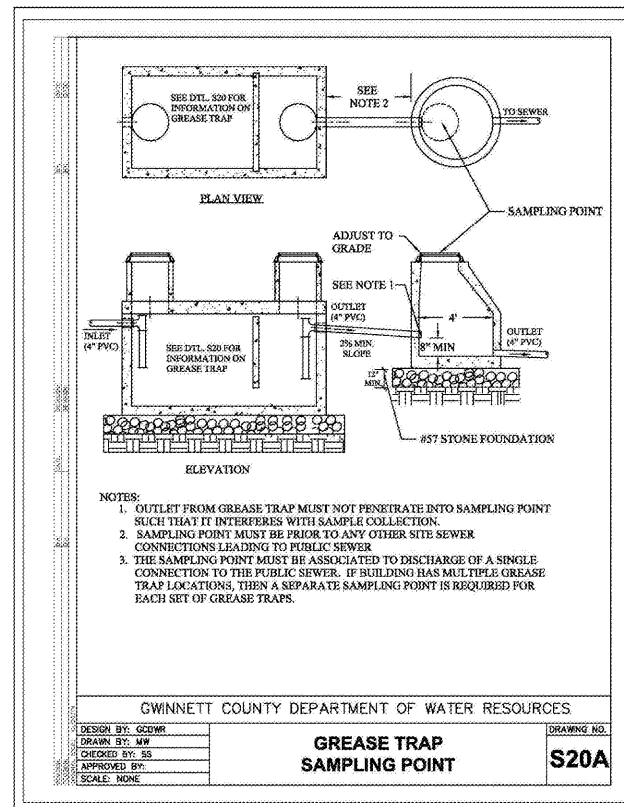
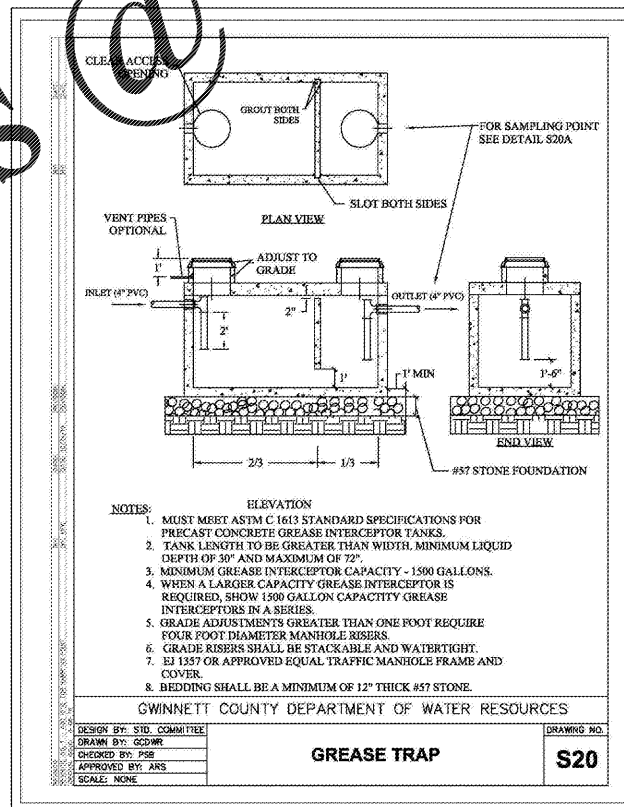


Order Plans @ www.LDILine.com

GREASE INTERCEPTOR CAPACITY = (S) x (CS) x (HR) x (LF) / 12		
NUMBER OF SEATS IN DINING AREA (S) =	20	
GALLONS OF WASTEWATER PER SEAT (CS) =	25	
NO. OF HOURS OPEN FOR BUSINESS (HR) =	24	
LOAD FACTOR (LF) =	1	
GREASE INTERCEPTOR CAPACITY =	1000	GALLONS
INSTALL =	1500	GALLONS



GWINNETT COUNTY
 Department of Planning and Development
 These project documents have been reviewed by applicable County Departments and have been found to be in substantial compliance with the applicable codes and regulations.
 Jun 02, 2020
AUTHORIZED

REV.	DATE	DESCRIPTION



THE SOUTHEAST CIVIL GROUP
 ENGINEERING • CONSULTING
 8800 BUCKLEUP PARKWAY
 DUBLIN, GA 30128
 PHONE: 678-852-2888
 EMAIL: INFO@SECGROUP.COM

JOB #: 181101
 SCALE: N.T.S.
 DATE:
 DESIGN BY:

VERTICAL DETAILS
 SHEET:
CD-4.0