

1 2 3 4 5 6

E
D
C
B
A

GENERAL NOTES

1. THESE DRAWINGS ARE DIAGRAMMATIC ONLY AND ARE NOT TO BE SCALED. FIELD VERIFY ALL DIMENSIONS, PIPE SIZES, AND INVERTS REFER TO ARCHITECTURAL SHEETS FOR DIMENSIONS AND LOCATIONS OF ALL PLUMBING FIXTURES AND EQUIPMENT.
2. ALL DOMESTIC COLD WATER SUPPLY PIPING, DOMESTIC HOT WATER SUPPLY PIPING, DOMESTIC HOT WATER RETURN PIPING, ROOF DRAIN BODIES, OVERFLOW ROOF DRAIN BODIES, 1" OF VERTICAL RAIN LEADER PIPING FROM DRAINS, AND ALL HORIZONTAL STORM WATER PIPING MUST BE INSULATED AND IDENTIFIED PER SPECIFICATIONS.
3. PROVIDE SLEEVES AND FIRE RATED ASSEMBLIES FOR ALL PENETRATIONS OF FIRE RATED FLOORS AND WALLS. REFER TO ARCHITECTURAL SHEETS FOR FIRE RATED ASSEMBLY DETAILS AND FIRE RATED FLOOR AND WALL DESIGNATIONS.

City of Asheville/ Parks & Recreation
DR. WESLEY GRANT
CENTER EXPANSION

285 LIVINGSTON STREET
 ASHEVILLE, NC 28801

DESIGNER


CLARK NEXSEN

333 FAYETTEVILLE STREET, SUITE 1000
 RALEIGH, NORTH CAROLINA 27601
 919-828-1876
 CLARK NEXSEN LICENSE NUMBER: C-1028

KEY NOTES

1. DESIGN INTENT IS TO ROUTE DOMESTIC WATER PIPING AS CLOSE TO FIXTURES AS POSSIBLE IN A CONTINUOUS LOOP WITH INDIVIDUAL DROPS TO EACH FIXTURE. INSTALL PIPING BELOW HVAC DUCTS AND AT A MAXIMUM OF 18" ABOVE CEILING. PROVIDE HOT WATER CIRCULATION FROM LAST FIXTURE ON D/HWS LOOP. COORDINATE WITH OTHER CONTRACTORS TO PROVIDE ACCESS PANEL LOCATIONS WITHIN REACH OF ALL VALVES LOCATED IN HARD CEILING AREAS. SEE PLUMBING FIXTURE SCHEDULE AND RISER DIAGRAM ON FOR ALL SIZES.
2. ROUTE DCWS PIPING UP WALL. ROUTE DCWS HIGH AND TIGHT TO STRUCTURE.
3. INSTALL DCWS TO NFWH-1 CONCEALED IN CHASE WALL. PROVIDE INSULATION AS SPECIFIED.
4. INSTALL MV-1 IN UNDER COUNTER SUPPLY LINES ON ALL P-4, P-5, AND P-9 FIXTURES. SEE LAVATORY PIPING DETAIL AND PLUMBING SPECIALTIES SCHEDULE.
5. INSTALL DOMESTIC COLD WATER ENTRANCE RISER. PROVIDE BALL VALVE AT 12" ABOVE FINISHED FLOOR. PROVIDE PRV-1 AND PRV-2 IN RISER. PROVIDE HB-1 ABOVE BUILDING SHUT-OFF FOR DRAIN DOWN. SEE PRESSURE REDUCING VALVE WATER ENTRANCE DETAIL AND PLUMBING SPECIALTIES SCHEDULE.
6. INSTALL NFWH-1 FLUSH WITH FINISHED WALL AT 24" ABOVE FINISHED GRADE. SEE PLUMBING SPECIALTIES SCHEDULE.
7. INSTALL HB-1 AT 12" ABOVE FINISHED FLOOR, TYPICAL. SEE PLUMBING SPECIALTIES SCHEDULE.
8. INSTALL DCWS TO BELOW GRADE AND ROUTE TO POOL, NFDH-1. SEE SHEET PP101 FOR CONTINUATION.
9. INSTALL WH-1 AND CP-1. SEE ELECTRIC WATER HEATER SYSTEM DETAIL, CIRCULATION PUMP ASSEMBLY DETAIL, AND SCHEDULES.
10. INSTALL REMOTE CHILLER FOR P-8 ON WALL SHELF. INSTALL WALL SHELF AT 6' AFF. ROUTE CHILLED WATER TO P-8 ABOVE CEILING AND DOWN IN WALL.
11. INSTALL P-11 AND SECURE TO FLOOR. PROVIDE WALL BRACKET TO STABILIZE PVC FIXTURE. PROVIDE MV-2 IN SURFACE MOUNTED CABINET LOCATED AT 80" AFF TO CENTER LINE. PROVIDE BALL VALVE, UNION, AND THERMOMETER IN BOTH INLETS AND OUTLET. SET MV-2 OUTLET TEMPERATURE AT 90°F. CONNECT MV-2 OUTLET TO P-11 INLET.
12. INSTALL P-10 AND SECURE TO OUTSIDE WALL. PROVIDE IN-WALL BACKING AS REQUIRED. SEE MIXING VALVE / OUTSIDE SHOWER ASSEMBLY DETAIL, PLUMBING FIXTURE SCHEDULE AND PLUMBING SPECIALTIES SCHEDULE.
13. INSTALL BFP-1 IN CEILING AND ROUTE PIPE DOWN ON WALL FOR POOL EQUIPMENT CONNECTION BY OTHERS. PROVIDE AIR GAP FITTING AND ROUTE DISCHARGE PIPE TO POOL BACKWASH PIT. SEE RP2 BACKFLOW PREVENTER DETAIL AND SCHEDULES.
14. INSTALL WHA-A* ON FIXTURES WHERE INDICATED. SEE DOMESTIC WATER FIXTURE CONNECTION DETAIL AND PLUMBING SPECIALTIES SCHEDULE.
15. INSTALL WM-1 IN MECH. ROOM CEILING FOR POOL EQUIPMENT SUPPLY. PROVIDE REMOTE READ OUT IN PVC NEMA 4 ENCLOSURE AND LOCATE ON WALL AT 5 FEET AFF LEVEL.

PROFESSIONAL SEAL



02/24/2021

SUBMITTAL

03.12.2021

CONSTRUCTION DOCUMENTS

REVISIONS

KEY PLAN

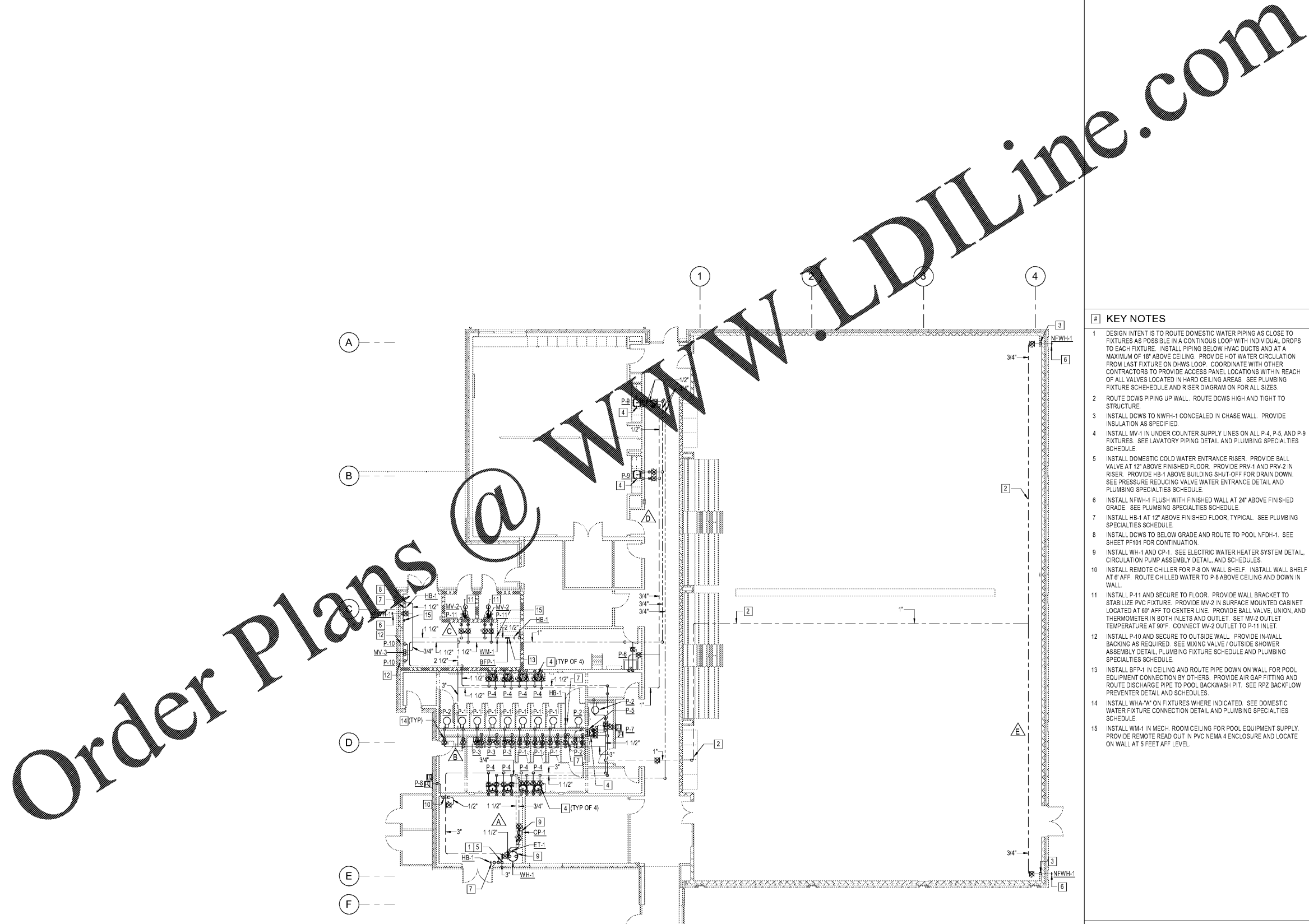
SHEET

FIRST FLOOR PLAN - WATER PIPING

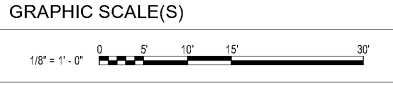
PL101

DESIGN: DKB
 DRAWN: DLR
 REVIEW: WAW

CN 7904-A



FIRST FLOOR PLAN - WATER PIPING
 1/8" = 1'-0"



3/11/2021 8:48:38 AM
 C:\Users\dmr\OneDrive\Documents\7904_Southside Facilities_P101_Drwall_Rodrigo\pl101.dwg