

DESIGNER

**CLARK NEXSEN**

301 COLLEGE STREET, SUITE 300  
 ASHEVILLE, NORTH CAROLINA 28801  
 828 232-9608

CLARK NEXSEN LICENSE NUMBER: C-1028

CORPORATE SEAL



PROFESSIONAL SEAL



2021.03.15 12:16:23-04'00"

SUBMITTAL

03.12.2021

**CONSTRUCTION DOCUMENTS**

REVISIONS

NO.	DESCRIPTION

KEY PLAN

**FINISHES**

- NOTES:**  
 1. ALL LISTED FINISHES ARE BASIS OF DESIGN.  
 2. ALL EXPOSED SURFACES AND STRUCTURE TO RECEIVE PAINT, U.O.N. REFER TO SPECIFICATIONS FOR APPLICABLE COATING SYSTEM.  
 3. ALL PAINT TO BE PT-1, U.O.N. ACCENT PAINT LOCATIONS AND AREAS TBD.

**PLASTIC LAMINATE - CASEWORK**

- PL-1: FORMICA, SAND MAPLE (9237-58), MATTE FINISH
- PL-2: FORMICA, CITADEL (1097-MC), MICRO-DOT FINISH
- PL-3: WILSONART, PLATINUM (D315-60), MATTE FINISH

**SOLID SURFACE COUNTERTOPS**

- SS-1: WILSONART, HOT STONE (9201G)
- SS-2: HANEX, CUMULUS (BL-018)

**ATHLETIC WOOD FLOORS**

- AWD-1: WOOD ATHLETIC FLOORING

**BASE**

- RB-1: RESILIENT BASE, TBD
- VRB-1: VENTILATED RUBBER COVE BASE, TBD
- B.O.S.: BRASSVILLE, COLOR BLOX, A1103 "SLINKY" 6X6
- SL: SCHLUTER, ANAKA COVE BASE TRIM, TSSG FINISH

**WALL TILES**

- CT-1: CROSSVILLE, COLOR BLOX, A1103 "SLINKY" 6X6
- GT-1: MAPEI, PEARL GRAY
- CT-2: CROSSVILLE, COLOR BLOX, ACCENT/TBD 6X6
- GT-1: MAPEI, PEARL GRAY

**WALK-OFF MAT:**

- WM-1: TO MATCH EXISTING, DEPRESS SLABIN WALK-OFF MAT LOCATIONS

**HDPE TOILET PARTITIONS**

- HDPE-1: COLOR TBD- ARCHITECT TO CHOOSE FROM FULL RANGE OF COLOR

**CONCRETE FLOORS**

- CONC-1: CONCRETE W/ MEDIUM BROOM FINISH
- CONC-2: SEALED CONCRETE
- CONC-3: CONCRETE W/ SLIP-RESIST. EPOXY COATING

**PAINT**

- PT-1: TBD
- PT-2: TBD
- PT-3: TBD
- PT-4: TBD
- PT-5: TBD
- PT-6: TBD
- PT-7: TBD
- PT-8: TBD

**FINISHES ABBREVIATIONS**

FLOORING:  
 SC - SEALED CONCRETE  
 TL - PORCELAIN TILE  
 WAF - WOOD ATHLETIC FLOOR  
 ETR - EXISTING TO REMAIN

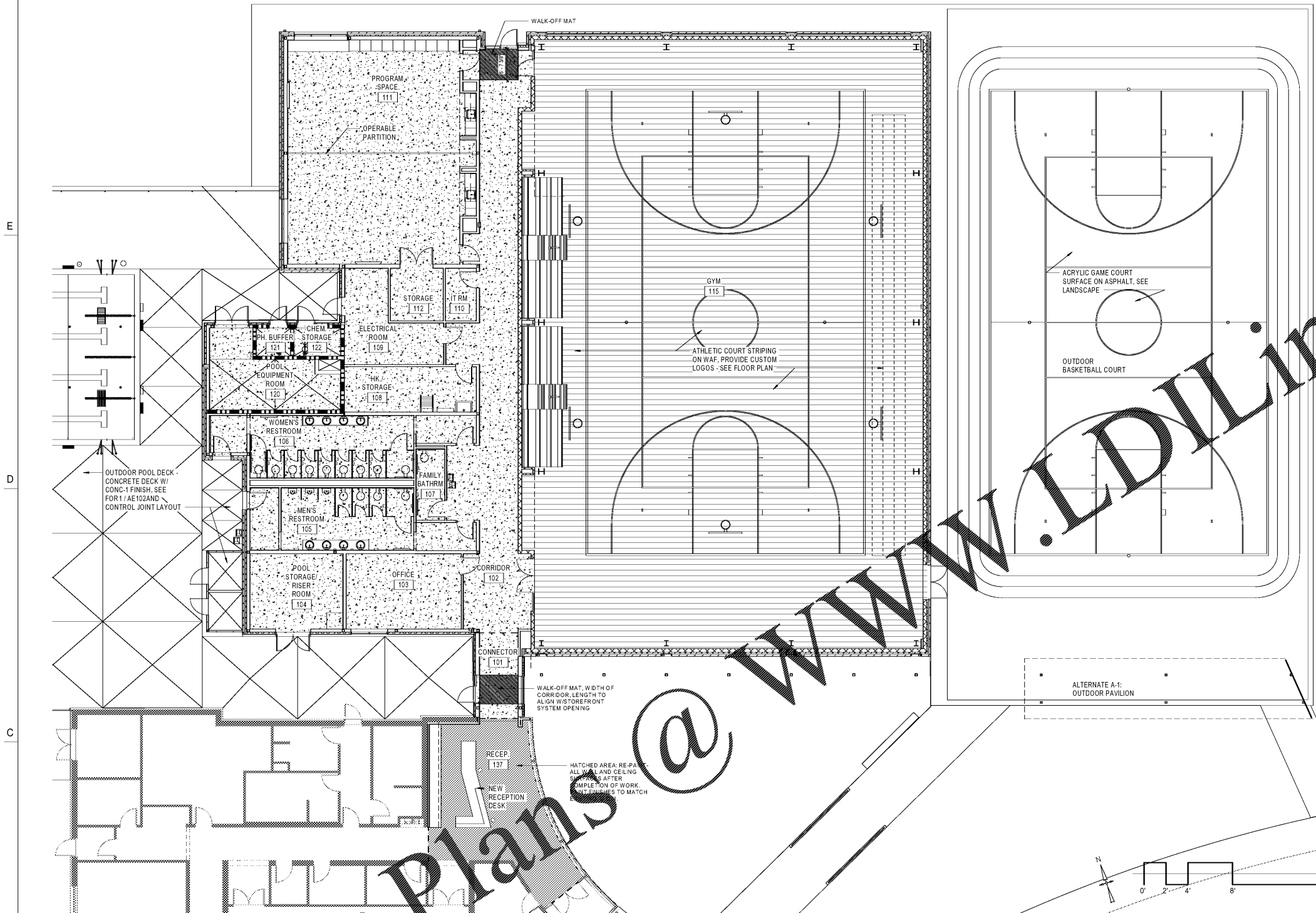
BASE:  
 MDF - MDF BOARD PAINTED  
 RB - RESILIENT BASE  
 TL - PORCELAIN TILE BASE  
 RVB - RESILIENT VENTILATED BASE

WALLS:  
 PT - PAINT  
 TL - PORCELAIN TILE

ETR

SC

WAF



**1 FIRST FLOOR FINISH PLAN**

AF600 1/8" = 1'-0" REF 31 AD101

NO.	ROOM NAME	FLOORING			WALLS		CEILING FINISH	REMARKS
		MATERIAL	FINISH	BASE	MATERIAL	CODE		
101	CONNECTOR	SC	CONC-2	RB	RB-1	GWB, PT	T&G WD DECK, EXPOSED	T&G W/ CLEAR COAT
102	CORRIDOR	SC	CONC-2	RB	RB-1	GWB, PT	ACT, GWB W/ PT	
103	OFFICE	SC	CONC-2	RB	RB-1	GWB, PT	ACT	
104	POOL STORAGE/ RISER ROOM	SC	CONC-2	RB	RB-1	GWB, PT	EXPOSED STL DECK, PT	
105	MEN'S RESTROOM	SC	CONC-3	TL	TB-1	TL / GWB, PT	WT-1	EPOXY PAINT
106	WOMEN'S RESTROOM	SC	CONC-3	TL	TB-1	TL / GWB, PT	WT-1	EPOXY PAINT
107	FAMILY BATHRM	SC	CONC-3	TL	TB-1	TL / GWB, PT	WT-1	EPOXY PAINT
108	HK / STORAGE	SC	CONC-2	RB	RB-1	GWB, PT	EXPOSED STL DECK, PT	
109	ELECTRICAL ROOM	SC	CONC-2	RB	RB-1	GWB, PT	EXPOSED STL DECK, PT	
110	IT RM	SC	CONC-2	RB	RB-1	GWB, PT	EXPOSED STL DECK, PT	
111	PROGRAM SPACE	SC	CONC-2	RB	RB-1	GWB, PT	T&G WD DECK, EXPOSED	T&G W/ CLEAR COAT
112	STORAGE	SC	CONC-2	RB	RB-1	GWB, PT	EXPOSED STL DECK, PT	
115	GYM	WAF	CONC-2	RVB	VRB-1	CMU, PT / GWB, PT	EXPOSED STL DECK, PT	EPOXY PAINT. STUD WALLS TO HAVE IMPACT RESISTANT GWB
120	POOL EQUIPMENT ROOM	SC	CONC-2	RB	RB-1	CMU, PT / GWB, PT	EXPOSED STL DECK, PT	EPOXY PAINT. PAINT ALL STEEL STRUCTURE COMPONENTS W/ PAINT SYSTEM
121	PH BUFFER	SC	CONC-2	RB	RB-1	CMU, PT	EXPOSED STL DECK, PT	EPOXY PAINT. PAINT ALL STEEL STRUCTURE COMPONENTS W/ PAINT SYSTEM
122	CHEM. STORAGE	SC	CONC-2	RB	RB-1	CMU, PT	EXPOSED STL DECK, PT	EPOXY PAINT. PAINT ALL STEEL STRUCTURE COMPONENTS W/ PAINT SYSTEM
137	RECEP.	ETR	CONC-2	RB	RB-1	GWB, PT	GWB W/ PT	

Order Plans @

WWW.AJDLINE.COM

SHEET  
**FINISH PLAN**

**AF600**

DESIGN: Designer  
 DRAWN: Author  
 REVIEW: Checker

CN 7904-A