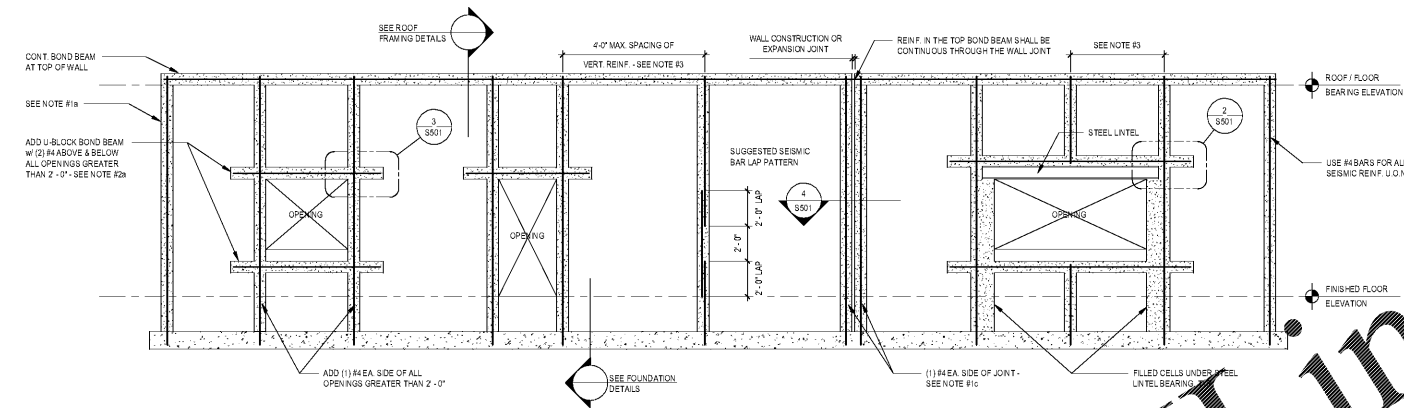


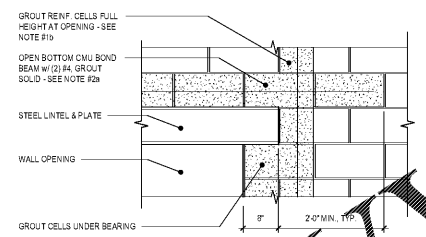


NO.	DATE	DESCRIPTION

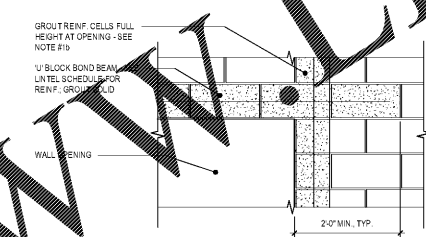


- SEISMIC REINFORCING NOTES:**
- ALL MASONRY SHALL BE VERTICALLY REINFORCED CONTINUOUSLY FROM SUPPORT TO SUPPORT:
 - AT EACH CORNER
 - AT EACH SIDE OPENING
 - AT WALL ENDS
 WALLS SHALL BE REINFORCED WITH BAR SIZES NOTED IN ELEVATION AND DETAIL THESE LOCATIONS UNLESS OTHERWISE NOTED IN OTHER SHEETS AND DETAILS.
 - HORIZONTAL BOND BEAMS REINFORCED AS NOTED IN SECTION AND LATEL SCHEDULE SHALL BE FURNISHED:
 - AT THE BOTTOM OF ALL OPENINGS GREATER THAN 2'-0" AND SHALL EXTEND NOT LESS THAN 2'-0" FROM THE OPENING OR STEEL LINTEL BEARING AND AT THE TOP OF ALL WALLS
 - CONTINUOUSLY AT STRUCTURAL EXPANSION JOINTS, ROOF AND FLOOR LEVELS AND AT THE TOP OF ALL WALLS
 - IN THE TOP OF THE FOUNDATION
 - WHERE REINFORCING IS NOTED IN NOTES #1 & #2 ABOVE LEAVE SPACING BETWEEN VERTICAL BARS GREATER THAN 4'-0" ADD BARS AS NOTED IN ELEVATION AND DETAIL @ 4'-0" IN NO CASE SHALL ANY WALL HAVE VERTICAL REINFORCING SPACED GREATER THAN 4'-0".
 - WHERE DETAILS SHOWN ON OTHER SHEETS NOTE REINFORCING OF GREATER SIZE AND CLOSER SPACING. THE REINFORCING REQUIREMENTS IN SAID DETAIL GOVERN. THE SEISMIC REINFORCING NOTED AT WALL OPENINGS, CORNERS, AND ENDS SHALL BE IN ADDITION TO REINFORCING IN OTHER DETAILS.

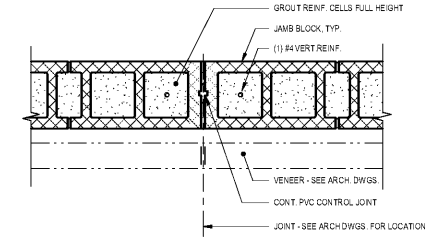
1 MINIMUM CMU SEISMIC REINFORCING
 S501 1/4" = 1'-0"



2 SEISMIC REINF. AT STEEL LINTEL
 S501 3/4" = 1'-0"



3 SEISMIC REINF. AT MASONRY LINTEL
 S501 3/4" = 1'-0"



4 CONTROL JOINT - PLAN VIEW
 S501 1 1/2" = 1'-0"

Order Plans @ www.LDILine.com

N:\105154_01_01_14_44
 208 305 020180703 - 308.mxd - 12/12/2021 10:44:44 AM - PLOT - 1/12/2021 10:44:44 AM