

NOTES:

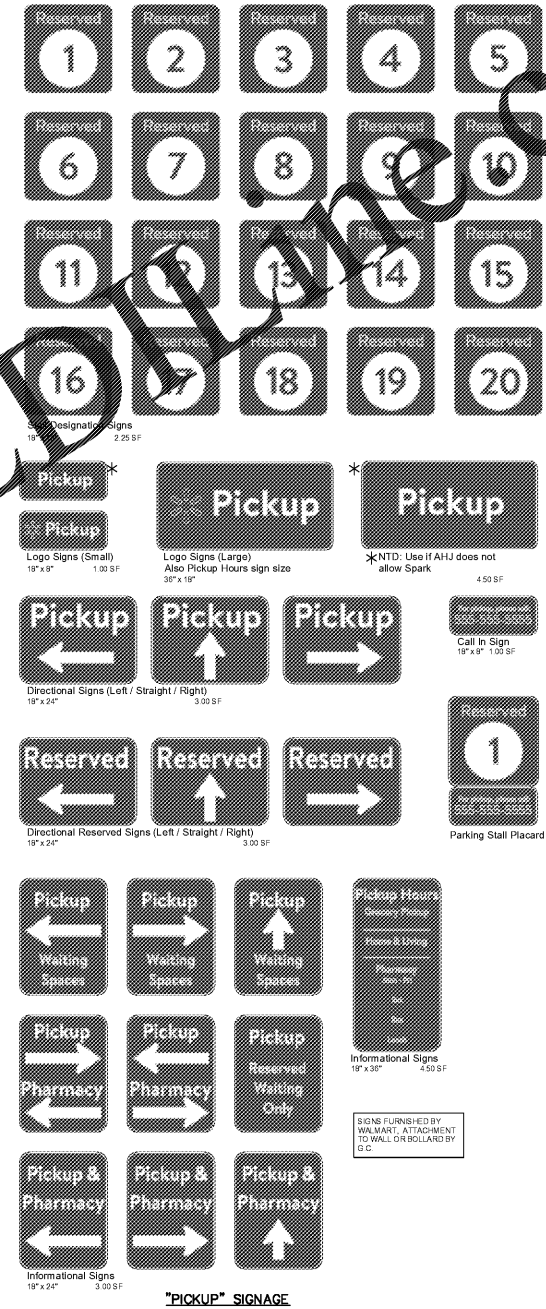
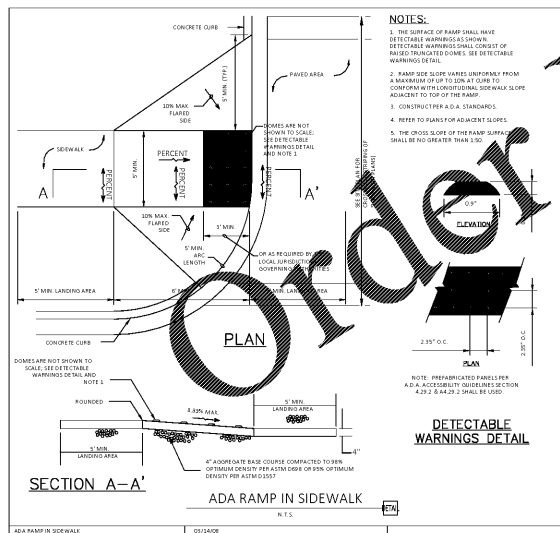
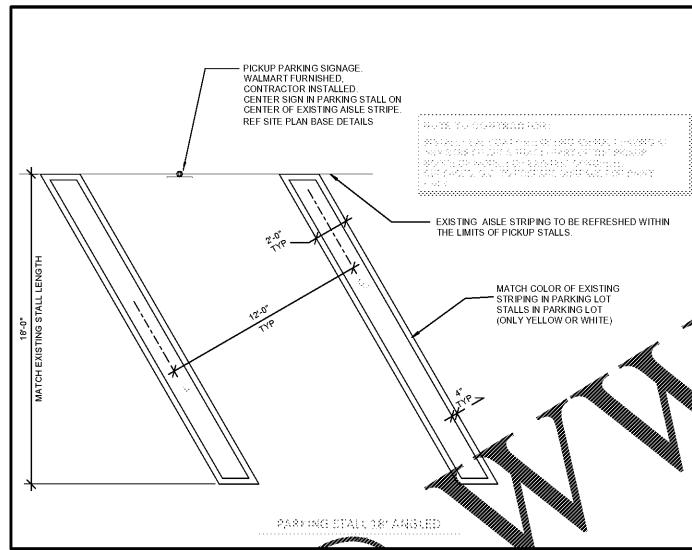
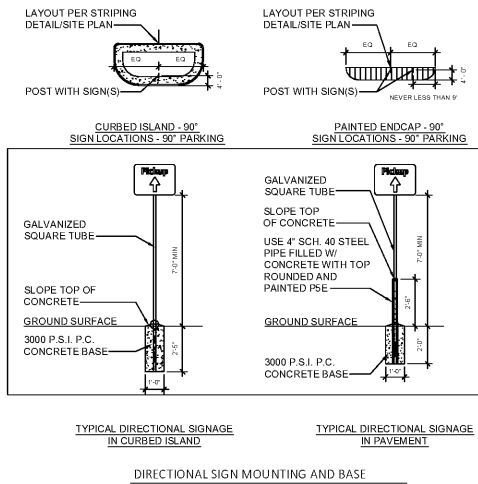
- ALL SIGNS SHALL COMPLY WITH U.S. DEPARTMENT OF TRANSPORTATION, FEDERAL HIGHWAY ADMINISTRATION'S "MANUAL OF UNIFORM TRAFFIC CONTROL DEVICES", LOCAL CODES AND AS SPECIFIED. MOUNT SIGNS TO POST IN ACCORDANCE WITH MANUFACTURER'S INSTRUCTIONS.
- GALVANIZED SQUARE TUBE
 POST TUBES - 2"x2"x3/16" 12ga
 POST TUBE GALVANIZED AS PER ASTM A663 GRADE 90.
 ANCHOR TUBE - 2-1/4"x2-1/4"x3/16" 12ga
 HEAVY DUTY ANCHOR TUBE SHALL MEET ASTM A500 GRADE B. STRUCTURAL TUBE AND STEEL SHALL BE HOT DIP GALVANIZED PER ASTM A123.
 THE UPPER SIGN POST SHALL TELESCOPE INSIDE THE ANCHOR TUBE A MINIMUM OF 12". THE ANCHOR TUBE SHALL BE A MINIMUM 27" DEEP WITH 3" MIN. 4" MAX. EXPOSED ABOVE FINISH GRADE.

5/16" GR. 5 FLANGED BOLT
 5/16" GR. 5 SERRATED FLANGED NUT

PLAN VIEW REMOVABLE SQUARE TUBE POST

PARTIAL ELEVATION GROUND SURFACE

PARKING SIGN MOUNTING AND BASE



FINISH LEGEND

P101	GUSTO GOLD SW #8904
P76	WALMART BLUE SW#076
P5E	SAFETY YELLOW

DETAILS

REVISION	BY

914 E. Bayou Road
 Thibodaux, LA 70301
 Office: 985-447-0090
 Fax: 985-447-7009
 www.ddgc.com

DDG
 DUPLANTIS DESIGN GROUP

Signature: *[Signature]*
 DATE: 03-31-2021

Professional Engineer Seal: State of Louisiana, No. 10000, Exp. 12/31/2024

SUPERCENTER #00483-249
 1903 COBBS FORD RD
 PRATTVILLE, ALTAUGA COUNTY, ALABAMA
 WAL-MART STORES, INC.
 BENTONVILLE, AR

Walmart

DRAWN: GJP
 CHECKED: GRL
 ISSUED DATE: 03-31-21
 ISSUED FOR PERMIT: 20-556
 PROJECT NO.: 20-556
 FILE: 20-556 SITE PLAN
 SHEET: OGP-3

J:\CAD\DWG\WAL-MART\2020\20-556\20-556 SITE PLAN.dwg