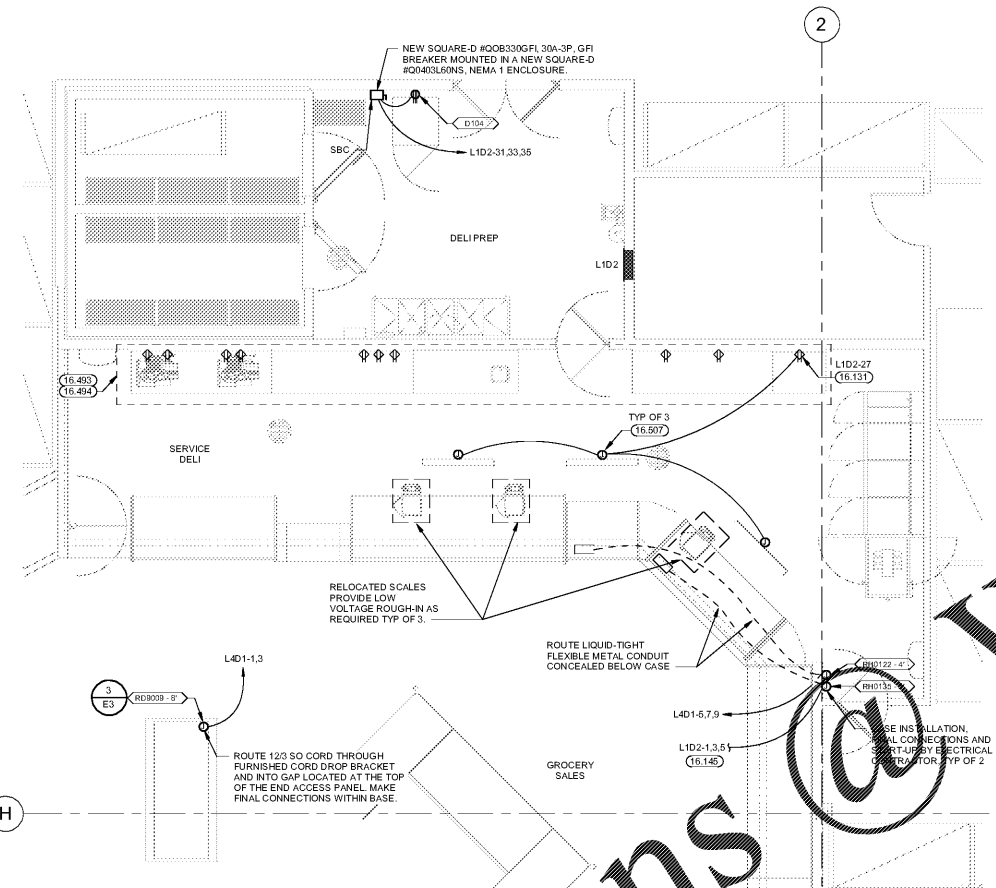
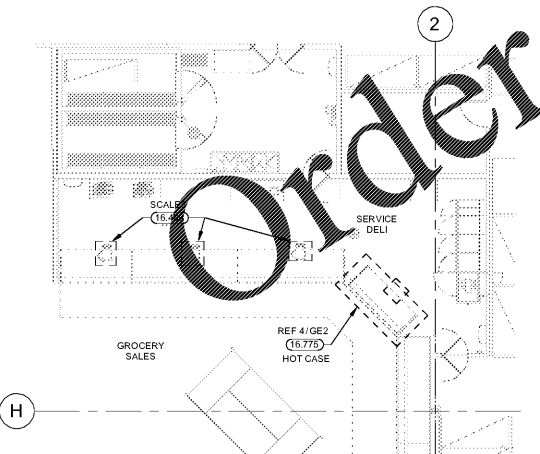


6 BAKERY POWER PLAN  
1/8" = 1'-0"

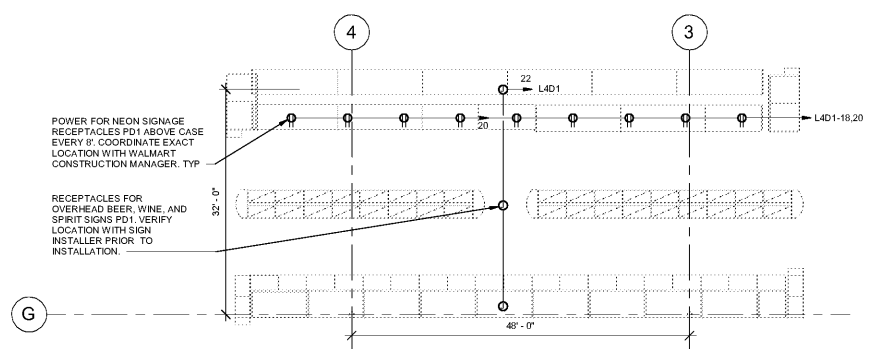
5 BAKERY POWER DEMO PLAN  
1/8" = 1'-0"



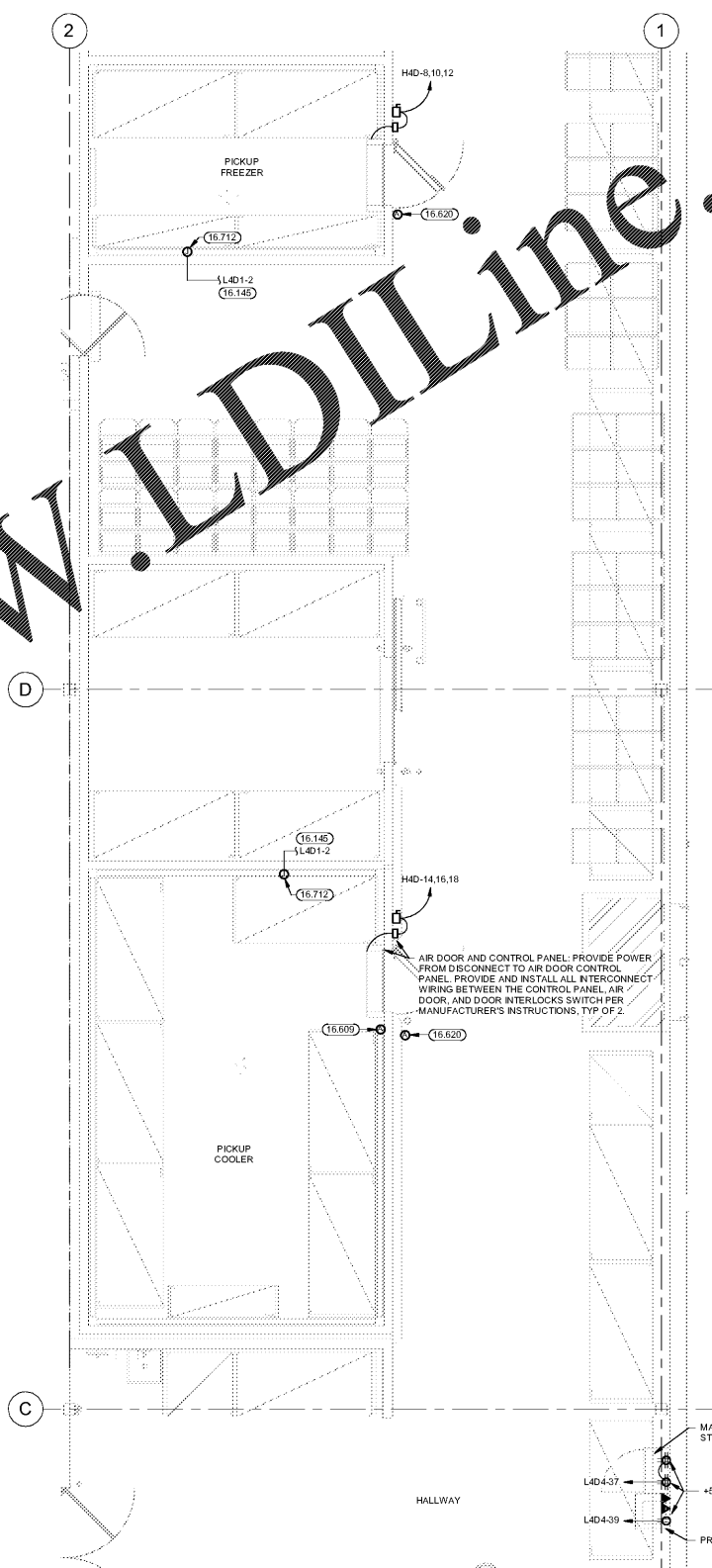
4 REAR GROCERY POWER PLAN  
1/4" = 1'-0"



3 REAR GROCERY POWER DEMO PLAN  
1/8" = 1'-0"



2 SWAS POWER PLAN  
1" = 10'-0"



1 FRONT GROCERY POWER PLAN  
1/4" = 1'-0"

KITCHEN DEVICE SCHEDULE								
NUMBER	DESCRIPTION	MANUFACTURER	MODEL	VOLT/PHASE	AMPS	TERMINATION	MTG. HT.	NOTES
DELI EQUIPMENT SCHEDULE								
D104	BLAST CHILLER	DESMON	GBF-15	208/3	18.00 A	WP, RECEPTACLE, NEMA 115-30R	4'	K
REFRIGERATED AND HOT CASE SCHEDULE								
RD909-8'	ISLAND MERCHANDISER	STRUCTURAL CONCEPTS	MI8R	208/1	12.20 A	NEMA 6-20R	10'	C, K
RH0122-4'	4' HOT DELI SELF-SERVICE MULTIDECK	CUSTOM DELUS	DLW-SS	120/208/3	10.00 A	WP, JUNCTION BOX	12'	E, F
RH0135-8'	8' HOT DELI SELF-SERVICE MULTIDECK	CUSTOM DELUS	LW-CB-SS	120/208/3	25.00 A	WP, JUNCTION BOX	12'	E, F

A. PROVIDE CORROSION RESISTANT PLUG, CONNECTOR, AND WEATHERPROOF BOOTS. CONNECTOR AND WEATHERBOOTS SHALL BE FROM THE SAME MANUFACTURER.  
 B. PROVIDE MATCHING CORD AND MALE PLUG.  
 C. WIRING DEVICE ON DROP CORD FROM CEILING. REFER TO SUSPENDED DROP CORD DETAILS.  
 D. WIRING DEVICE CIRCUITED TO SHUNT-TRIP BREAKER.  
 E. PROVIDE WEATHER TIGHT FLEX CONDUIT AND WIRING FROM DISCONNECT SWITCH OR JUNCTION BOX TO EQUIPMENT KNOCKOUT OR ELECTRICAL CONNECTION POINT.  
 F. MAKE FINAL CONNECTIONS TO EQUIPMENT.  
 G. PROVIDE CORROSION PROOF PLUGS AND RECEPTACLES FOR EQUIPMENT SPECIFIED ON ELECTRICAL EQUIPMENT SCHEDULE NOTES.  
 H. VERIFY EXACT POINT(S) OF CONNECTION(S) AND FIELD WIRING REQUIREMENTS WITH EQUIPMENT INSTALLER.  
 I. IF NOT FURNISHED WITH EQUIPMENT, FURNISH AND INSTALL 6'-0" LONG SJO CORD WITH GROUNDING CONDUCTOR. SIZED AS FOLLOWS:  
 5 CONDUCTORS: 8RW (20A), #12W (20A), #12W (16A), #14W (12A), 4 CONDUCTORS: #4 (60A), 8RW (35A), #10W (25A), #12W (20A), #14W (15A).  
 3 CONDUCTORS: 8RW (40A), #10W (20A), #12W (25A), #14W (15A). FURNISH AND INSTALL GROUNDING TYPE ATTACHMENT C&P  
 J. SEE ELECTRICAL SPECIFICATIONS FOR RECEPTACLE, CONNECTOR, AND PLUG INFORMATION. PROVIDE AS REQUIRED.  
 K. CORD AND PLUG FURNISHED WITH EQUIPMENT.  
 L. PAN CONNECTED THROUGH 120V RELAY, 10A MAX

KEYNOTES

- 16.131 CONNECT TO EXISTING CIRCUIT.
- 16.145 CONNECT (CIRCUITS) TO EXISTING BRANCH CIRCUITRY. MINIMUM WIRE SIZE AND PANELBOARD CIRCUIT ARE NOTED. VERIFY SIZE, RATING AND CONDITION OF EXISTING BRANCH CIRCUIT CONDUIT AND WIRE PRIOR TO USE TO ENSURE THAT THEY MEET REQUIRED SIZE, AND ALL U.L. RATINGS AND REPLACE AS REQUIRED.
- 16.232 AUTOMATIC DOOR OPERATOR: VERIFY LOCATION WITH MANUFACTURER'S RECOMMENDATION FOR INSTALLATION. ALL DOOR CONTROLS INCLUDING LOW VOLTAGE ROUGH-IN CONDUIT, BACKBOXES AND WIRING BY OTHERS.
- 16.420 PROVIDE WP JUNCTION BOX WITH COVERPLATE AT 12'-0" AFG FOR MOUNTING OF EXTERIOR CAMERA. PROVIDE 3/4" CONDUIT THROUGH EXTERIOR WALL TO ABOVE BAR JOIST AND TERMINATE WITH BUSHING.
- 16.499 RELOCATE, EXTEND, AND RECONNECT CIRCUITRY AND ELECTRICAL DEVICES FOR RELOCATED AND/OR NEW EQUIPMENT. VERIFY CONDITION OF BRANCH CIRCUITRY, CONDUIT AND WIRING TO ENSURE THEY MEET ALL U.L. RATINGS AND REPLACE AS REQUIRED. VERIFY ALL LOCATION OF RELOCATED NEW EQUIPMENT WITH WALMART CONSTRUCTION SUPERVISOR.
- 16.503 WALL FINISH TO BE REPLACED, REMOVE AND REINSTALL ELECTRICAL DEVICES AND WORK WITH OUTLETS AS REQUIRED FOR INSTALLATION OF NEW WALL FINISH. UTILIZE UL LISTED BOX EXTENDERS AS REQUIRED TO ENSURE COMPLIANT INSTALLATION. RECEPTACLES SHALL BE REPLACED WITH NEW GRAY GFCI DEVICES. PROVIDE NEW STAINLESS STEEL COVERPLATES FOR ELECTRICAL AND VOICEDATA DEVICES. IF SURFACE MOUNTED CONDUIT DEVICES ARE ENCOUNTERED REPLACE WITH CONCEALED CONDUIT AND RECESSED DEVICES.
- 16.494 WALL FINISH TO BE REPLACED, REMOVE AND REINSTALL LIGHT SWITCHES AND FIXTURES AS REQUIRED FOR INSTALLATION OF NEW WALL FINISH. UTILIZE UL LISTED BOX EXTENDERS AS REQUIRED TO ENSURE COMPLIANT INSTALLATION. LIGHT SWITCHES SHALL BE REPLACED WITH NEW GRAY DEVICES AND STAINLESS STEEL COVERPLATES. IF SURFACE MOUNTED CONDUIT DEVICES ARE ENCOUNTERED REPLACE WITH CONCEALED CONDUIT AND RECESSED DEVICES.
- 16.507 MENU TV'S: MOUNT JUNCTION BOX AT STRUCTURE. AFTER INSTALLATION OF DROP POLE AND TV COMPONENT TRAY, EXTEND CONDUCTORS IN 1/2" FLEXIBLE METAL CONDUIT, ROUTED INSIDE DROP POLE, TO TV COMPONENT TRAY. PROVIDE 120V, 20A DUPLEX RECEPTACLE ON TV COMPONENT TRAY AND MAKE FINAL TERMINATIONS. COORDINATE TV LOCATIONS WITH STORE SETUP SUPERVISOR.
- 16.508 INSECT CONTROL: PROVIDE BROWN DEVICE AND MATCHING COVERPLATE.
- 16.609 INSTALL FURNISHED ALARM JUNCTION BOX AT +80". PENETRATE COOLER WALL, AND ROUTE VERTICAL RACEWAY UP EXTERIOR SIDE OF COOLER WALL TO STRUCTURE. MINIMIZE EXPOSED CONDUIT ROUTED INSIDE COOLER BOXES. COORDINATE EXACT LOCATION WITH FIRE ALARM INSTALLER PRIOR TO ROUGH-IN. SEAL CONDUIT SLEEVE AND SLEEVE PENETRATION WITH SILICONE SEALANT AFTER CABLING IS INSTALLED.
- 16.620 AF REPEATER: PROVIDE 3/4" CONDUIT FROM JUNCTION BOX TO STRUCTURE. PROVIDE 1" CONDUIT FROM BACK OF BOX EXTENDED 2" INTO COOLER POSITION. JUNCTION BOX SO THAT SLEEVE IS 1/2" ABOVE DOOR ON NON ACTIVE SIDE OF DOOR OR 1/2" ABOVE ROLL SEAL ON OPPOSITE SIDE OF CONTROLS. TERMINATE EACH CONDUIT END WITH THREADED BUSHINGS. SEAL CONDUIT SLEEVE AND SLEEVE PENETRATION WITH SILICONE SEALANT AFTER CABLING IS INSTALLED.
- 16.712 SURFACE MOUNT WP JUNCTION BOX ON WALL 2' BELOW COOLER FREEZER BOX CEILING FOR CONDENSATE DRAIN HEAT TRACE TAPE. PROVIDE LIQUID-TIGHT FLEXIBLE METAL CONDUIT CONNECTION TO HEAT TAPE.
- 16.775 E.C. SHALL DISCONNECT, EXTEND, AND RECONNECT ALL ELECTRICAL CIRCUITRY FOR NEW OR RELOCATED EQUIPMENT. REFERENCE POWER PLANS AS APPLICABLE. VERIFY CONDITION OF BRANCH CIRCUIT, CONDUIT, AND WIRE PRIOR TO USE TO ENSURE THAT THEY MEET ALL U.L. RATINGS AND REPLACE AS REQUIRED. COORDINATE THIS PROCESS WITH CONSTRUCTION MANAGER TO MINIMIZE DOWNTIME. LABEL ALL ASSOCIATED PANELBOARD SCHEDULES TO REFLECT LOAD DESCRIPTIONS.

STIPULATION FOR REUSE  
THIS DRAWING IS THE PROPERTY OF HENDERSON ENGINEERS, INC. IT IS TO BE USED FOR THE PROJECT AND SITE SPECIFICALLY IDENTIFIED HEREIN. IT IS NOT TO BE REPRODUCED, COPIED, OR TRANSMITTED IN ANY FORM OR BY ANY MEANS, ELECTRONIC OR MECHANICAL, INCLUDING PHOTOCOPYING, RECORDING, OR BY ANY INFORMATION STORAGE AND RETRIEVAL SYSTEM, WITHOUT THE WRITTEN PERMISSION OF HENDERSON ENGINEERS, INC. THE USER OF THIS DRAWING SHALL BE RESPONSIBLE FOR OBTAINING ALL NECESSARY PERMITS AND APPROVALS FROM THE APPROPRIATE AGENCIES AND AUTHORITIES. THE USER SHALL BE RESPONSIBLE FOR OBTAINING ALL NECESSARY PERMITS AND APPROVALS FROM THE APPROPRIATE AGENCIES AND AUTHORITIES. THE USER SHALL BE RESPONSIBLE FOR OBTAINING ALL NECESSARY PERMITS AND APPROVALS FROM THE APPROPRIATE AGENCIES AND AUTHORITIES.

CONSULTANTS  
HENDERSON ENGINEERS, INC.  
6045 LEBLANCHE SUITE 100  
TEL 913.742.2000 FAX 913.742.1001  
WWW.HENDERSONENGINEERS.COM  
AL. EXP. 06/20/2025  
CA. 06/20/2025  
TX. 06/20/2025

Walmart  
PRATTVILLE, AL  
1803 COBBS FORD ROAD  
STORE NO. 00485-249  
JOB NUMBER: 21800485 | PHOTO: 188

ISSUE BLOCK	
NO.	DESCRIPTION

CHECKED BY: MM  
DRAWN BY: SBHDP  
PROTO CYCLE: 01/29/21  
DOCUMENT DATE: 03/31/21



03/30/2021  
GROCERY POWER PLANS

SHEET: GE2

Order Plans @

www.LDILine.com