

2 REAR REFRIGERATION PLAN
1/8" = 1'-0"

PIPE DESIGNATION	HORIZONTAL SUCTION	VERTICAL SUCTION RISER AS REQUIRED	LIQUID	ESTIMATED TOTAL LENGTH**
1B	2 5/8	1 1/8 & 1 5/8	7/8	57
B1.3	1 3/8	7/8	1/2	
B1.4	1 3/8	7/8	1/2	
2B	2 5/8	1 3/8 & 2 5/8	7/8	153
B2.1	5/8	1/2	1/2	
2.1B	2 5/8	1 5/8	7/8	
B2.2	1 3/8	7/8	1/2	
2.2B	1 3/8	1 1/8	5/8	
B2.3	1 3/8	7/8	1/2	
B2.4	5/8	1/2	1/2	
3B	2 5/8	1 1/8 & 2 1/8	7/8	190
B3.1	5/8	1/2	1/2	
3.1B	2 5/8	1 5/8	7/8	
B3.2	1 3/8	7/8	1/2	
3.2B	1 3/8	1 1/8	5/8	
B3.3	1 3/8	7/8	1/2	
B3.4	5/8	1/2	1/2	
B4	5/8	1/2	1/2	240
B5**	1 5/8***	1 3/8***	1/2***	43
B5P**	1 3/8***	1 1/8***	1/2***	13
B5C**	1 3/8***	1 1/8***	1/2***	28

* RISER SIZE IS SHOWN EVEN WHERE A RISER IS NOT EXPECTED. THIS IS FOR REFERENCE ONLY AND TO BE USED IN THE EVENT THAT A PIPING CONFLICT CAUSES THE NEED FOR A RISER. IF RISER LENGTH EXCEEDS 4 FEET, IT MUST BE APPROVED BY ENGINEER OF RECORD.

**ESTIMATED TOTAL LENGTH INCLUDES HORIZONTAL AND VERTICAL PIPE SECTIONS. THIS IS ONLY AN ESTIMATE AND ACTUAL LENGTH WILL VARY.

Updated: 3/29/2021

PIPE DESIGNATION	HORIZONTAL SUCTION	VERTICAL SUCTION RISER AS REQUIRED	LIQUID	ESTIMATED TOTAL LENGTH**
1D	2 5/8	7/8	1 1/8	135
D1.1	7/8	5/8	1/2	
1.1D	2 1/8	1 5/8 & 1 5/8	7/8	
D1.2	1 5/8	1 5/8	5/8	
1.2D	1 3/8	1 3/8	7/8	
D1.3	1 1/8	1 1/8	5/8	
1.3D	1 3/8	1 1/8	5/8	
D1.4	1 1/8	1 1/8	5/8	
D1.5	7/8	5/8	3/8	
D2.1	2 1/8	1 5/8	1/8	87
D2.1	1 1/8	7/8	1/2	
D2.1a	1 5/8	1 3/8	5/8	
D2.2	1 1/8	5/8	1/2	
D2.2*	1 1/8	7/8	1/2	64**
D2.3a**	7/8	5/8***	1/2***	17**
D2.3b**	7/8	5/8***	1/2***	30**
3D	2 5/8	3/8 & 2 1/8	1 1/8	185
D3.1	1 3/8	1 5/8	5/8	
3.1D	2 1/8	1 3/8	7/8	
D3.2	2 5/8	1 5/8	5/8	
D3.3	3/8	7/8	5/8	
4D	5/8	3/8	7/8	128
D4.2	5/8	5/8	1/2	
D4.3	1 1/8	7/8	1/2	
D5	7/8	7/8	5/8	215

* RISER SIZE IS SHOWN EVEN WHERE A RISER IS NOT EXPECTED. THIS IS FOR REFERENCE ONLY AND TO BE USED IN THE EVENT THAT A PIPING CONFLICT CAUSES THE NEED FOR A RISER. IF RISER LENGTH EXCEEDS 4 FEET, IT MUST BE APPROVED BY ENGINEER OF RECORD.

**ESTIMATED TOTAL LENGTH INCLUDES HORIZONTAL AND VERTICAL PIPE SECTIONS. THIS IS ONLY AN ESTIMATE AND ACTUAL LENGTH WILL VARY.

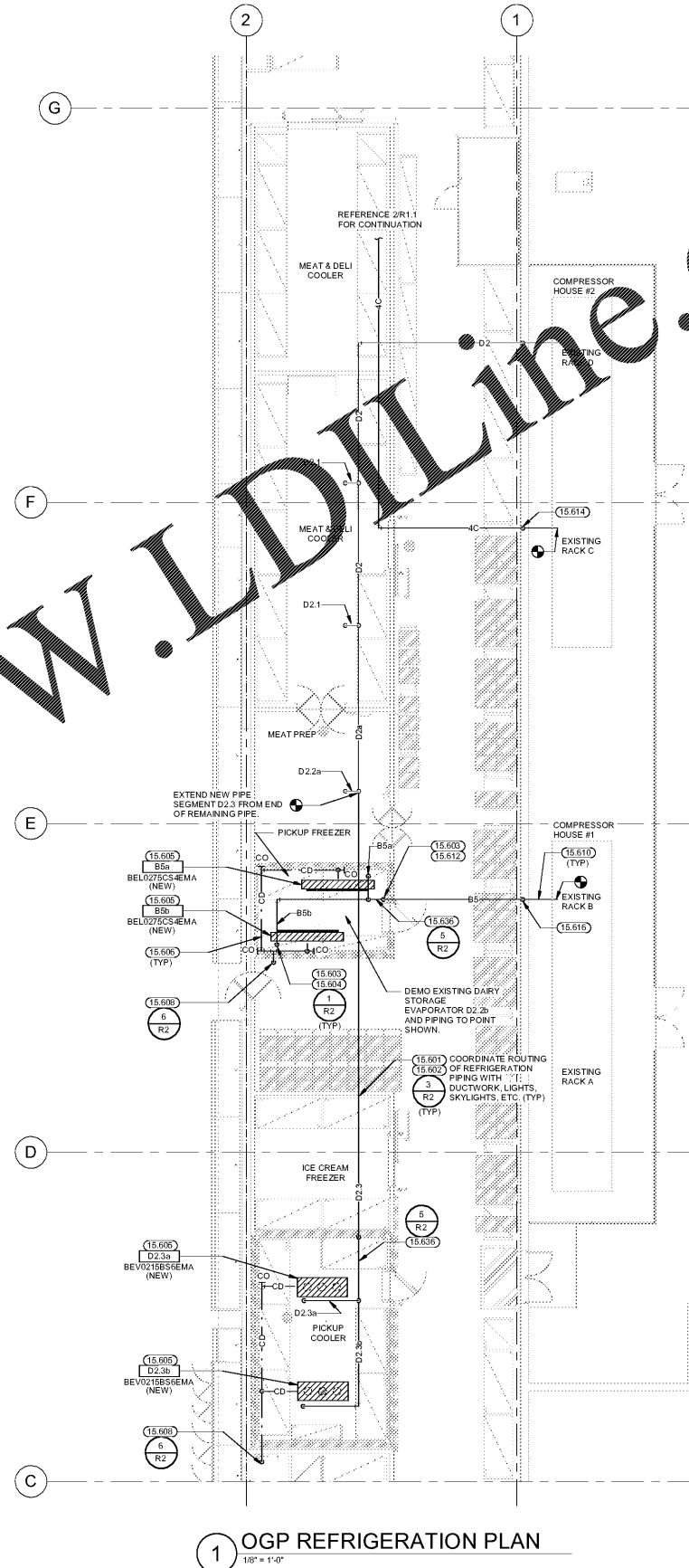
Updated: 3/29/2021

PIPE DESIGNATION	HORIZONTAL SUCTION	VERTICAL SUCTION RISER AS REQUIRED	LIQUID	ESTIMATED TOTAL LENGTH**
1C	2 5/8	1 3/8	1 1/8	70
C1.1	2 1/8	1 3/8	7/8	
1.1C	2 1/8	1 3/8	7/8	
C1.2	2 1/8	5/8	1/2	
1.2C	1 1/8	7/8	1/2	
C1.3	1 1/8	1/2	1/2	
C1.4	1 1/8	7/8	1/2	
C1.5	1 1/8	5/8	1/2	
1	1 1/8	1 3/8	7/8	68
1	1 1/8	1 1/8	5/8	
1	1 1/8	7/8	5/8	
2	2 5/8	1 5/8	1 1/8	102
1	1 5/8	1 1/8	7/8	
3.1B	1 5/8	1 1/8	7/8	
C3.1	1 3/8	7/8	5/8	
3.2C	1 3/8	7/8	5/8	
C3.3	7/8	5/8	1/2	
C3.4	1 1/8	5/8	1/2	
4C*	2 1/8***	5/8	7/8***	102**
4.1C**	1 1/8***	7/8	1/2***	4
C4.1**	5/8***	5/8***	1/2***	66
C4.2**	7/8***	5/8***	1/2***	72
4.3C**	1 3/8***	1 3/8***	7/8***	75
C4.3**	1 1/8***	1 1/8***	1/2***	26
C4.4**	1 3/8***	1 1/8***	5/8***	52

* RISER SIZE IS SHOWN EVEN WHERE A RISER IS NOT EXPECTED. THIS IS FOR REFERENCE ONLY AND TO BE USED IN THE EVENT THAT A PIPING CONFLICT CAUSES THE NEED FOR A RISER. IF RISER LENGTH EXCEEDS 4 FEET, IT MUST BE APPROVED BY ENGINEER OF RECORD.

**ESTIMATED TOTAL LENGTH INCLUDES HORIZONTAL AND VERTICAL PIPE SECTIONS. THIS IS ONLY AN ESTIMATE AND ACTUAL LENGTH WILL VARY.

Updated: 3/29/2021



1 OGP REFRIGERATION PLAN
1/8" = 1'-0"

GENERAL NOTES

REFER TO SHEET R1 FOR GENERAL NOTES PERTAINING TO THIS SHEET.

KEYNOTES

15.601 SLOPE REFRIGERANT LINES BACK TO COMPRESSORS AT 1" PER 20' OF RUN. LOCATE HIGHEST POINT OF REFRIGERANT LINES JUST BELOW BOTTOM CHORD OF JOIST OR BEAM. COORDINATE ELEVATION TO AVOID CONFLICTS WITH DUCTWORK, LIGHTING, SKYLIGHTS, ETC.

15.602 SUPPORT HORIZONTAL RUNS OF REFRIGERANT LINES ON 1-5/8" X 1-5/8" UNISTRUT CHANNELS ON MAXIMUM OF 6 FOOT CENTERS.

15.603 AT ALL POINTS WHERE SUCTION LINES RISE PROVIDE A SUCTION LINE TRAP AT THE BASE OF THE RISER.

15.604 PROVIDE AIRTIGHT SEAL AROUND ALL PIPING AND BOLT PENETRATIONS THROUGH COOLER/FREEZER BOX WALLS OR CEILING.

15.605 PROVIDE AIRTIGHT SEAL AROUND ALL PIPING AND BOLT PENETRATIONS THROUGH ROOF. UNISTRUT SPANNING THREE ROOF RAFTERS MUST BE 1-5/8" X 17' LONG 14 GA. UNISTRUT CHANNELS.

15.606 CONDENSATE DRAIN PITCH DRAIN LINES DOWN AT MINIMUM 1/8" PER 10' TOWARD DRAIN. PROVIDE PIPING WITH ELECTRIC HEAT TAPE INSULATION ON ALL CONDENSATE LINES EXPOSED TO FREEZING TEMPERATURES.

15.607 CONDENSATE LINE OVER RECEPTOR WAIR GAP. CONTRACTOR SHALL ENSURE FLOOR DRAIN(S) AND DRAIN LINE(S) SERVING WALK-IN ARE FREE OF OBSTRUCTIONS AND FUNCTION PROPERLY. WHERE EXTENSIVE DAMAGE EXISTS AND/OR PROPER DRAINAGE CANNOT BE OBTAINED COORDINATE WITH WALMART MECHANICAL CONSTRUCTION MANAGER.

15.609 PROVIDE PVC DRAIN LINE FROM EACH CASE DRAIN CONNECTION SAME SIZE AS CASE OUTLET. END OVER FLOOR RECEPTOR WAIR GAP. PITCH DRAIN(S) 1" PER 10'. PROVIDE DRAIN COVER GRATE TO MATCH EXISTING. CONTRACTOR SHALL ENSURE RECEPTOR(S) AND DRAIN LINE(S) SERVING CASE LINE UP ARE FREE OF OBSTRUCTIONS AND FUNCTION PROPERLY. WHERE EXTENSIVE DAMAGE EXISTS AND/OR PROPER DRAINAGE CANNOT BE OBTAINED COORDINATE WITH WALMART MECHANICAL CONSTRUCTION MANAGER.

15.610 PROVIDE 0.020" PVC JACKET ON ALL REFRIGERATION LINES EXTERIOR TO BUILDING.

15.612 PROVIDE INTERMEDIATE SUCTION LINE TRAP IN WALL OR VOID SPACE. INTERMEDIATE TRAP SHOULD BE PLACED AT THE MIDPOINT OF ANY SUCTION LINE RISE WHICH EXCEEDS 16 FEET.

15.614 UTILIZE EXISTING EXTERIOR WALL OPENING AS INDICATED WHEN POSSIBLE. IF LARGER OPENING IS REQUIRED REINFORCE WALL AS NECESSARY. CUT WALL FOR THE REFRIGERATION PIPE PENETRATION, AND SEAL THE WALL OPENING WITH FOAM AS SOON AS THE PIPING THROUGH THE WALL OPENING IS COMPLETE.

15.616 COORDINATE REFRIGERATION LINE PENETRATIONS THROUGH THE EXTERIOR WALL REINFORCE EXTERIOR WALL AS NECESSARY. CUT THE WALL OPENING FOR THE REFRIGERATION PIPE PENETRATION, AND SEAL THE WALL OPENING WITH FOAM AS SOON AS THE PIPING THROUGH THE WALL OPENING IS COMPLETE. COORDINATE EXACT SIZE AND LOCATION OF WALL PENETRATIONS WITH STRUCTURAL DRAWINGS.

15.621 REFRIGERATION CONTRACTOR SHALL RECEIVE SET/EQUIPMENT IN PLACE, LEVEL, AND START UP OWNERS SELF-CONTAINED REFRIGERATED EQUIPMENT. INSTALLATION AND START-UP SHALL BE IN STRICT CONFORMANCE WITH THE EQUIPMENT MANUFACTURER'S WRITTEN INSTALLATION AND START-UP INSTRUCTIONS. CONTRACTOR SHALL VERIFY CASE OPERATION AND NOTIFY WALMART MECHANICAL CONSTRUCTION MANAGER IF EQUIPMENT IS NOT OPERATING PROPERLY.

15.625 ROUTE REFRIGERATION LINES IN BASE OF CASE FOR ALL BOTTOM FED CONNECTED CASES. SLOPE BACK TO COMPRESSOR AT 1" PER 20'-0" OF RUN.

15.635 REFRIGERATION CONTRACTOR SHALL INSTALL REFRIGERATION MANUFACTURER-FURNISHED LIQUID LINE SOLENOID VALVE AND EVAPORATOR PRESSURE REGULATOR IN A SERVICE ACCESSIBLE LOCATION INSIDE CASE DRAIN PAN. CONTRACTOR SHALL FURNISH AND INSTALL FULL PORT ISOLATION BALL VALVE IN A SERVICE ACCESSIBLE LOCATION INSIDE CASE DRAIN PAN. INSTALL CONTROL WIRING FROM VALVES BACK TO CASE OR RACK CONTROLLER. REFER TO REFRIGERATION SUBMITTALS/SCHEDULES AND BAS PLANS FOR EXACT REQUIREMENTS. REFER TO SPECIFICATIONS FOR ASSET TAGGING REQUIREMENTS.

15.636 REFRIGERATION CONTRACTOR SHALL INSTALL REFRIGERATION MANUFACTURER-FURNISHED LIQUID LINE SOLENOID VALVE AND EVAPORATOR PRESSURE REGULATOR IN A SERVICE ACCESSIBLE LOCATION ON TOP OF WALK-IN BOX. CONTRACTOR SHALL FURNISH AND INSTALL FULL PORT ISOLATION BALL VALVE IN A SERVICE ACCESSIBLE LOCATION ON TOP OF WALK-IN BOX. INSTALL CONTROL WIRING FROM VALVES BACK TO CASE CONTROLLER OR CONDENSING UNIT. REFER TO REFRIGERATION SUBMITTALS/SCHEDULES AND BAS PLANS FOR EXACT REQUIREMENTS. REFER TO SPECIFICATIONS FOR ASSET TAGGING REQUIREMENTS.

STIPULATION FOR RISER

THIS DRAWING IS FOR INFORMATION ONLY. IT DOES NOT REPRESENT A CONTRACT. THE CONTRACTOR SHALL VERIFY ALL EXISTING CONDITIONS PRIOR TO SUBMITTING FINAL BIDS. CONTRACTOR SHALL CAREFULLY COORDINATE NEW WORK AND DEMOLITION WITH ALL OTHER DISCIPLINES AND EXISTING CONDITIONS.

CONSULTANTS

HENDERSON ENGINEERS
6945 LEBLANCHE SUITE 300
TEL: 913.742.5200 FAX: 913.742.5201
WWW.HENDERSONENGINEERS.COM
ALCOB080300010001 CA 2186
EXPIRES 1/1/2022

Walmart PRATTVILLE, AL
1803 COBBES FORD ROAD
STORE NO. 0485-249
JOB NUMBER: 218608088 | PHOTO: 186

2021 MAJOR PROJECT

ISSUE BLOCK

NO.	DATE	DESCRIPTION

CHECKED BY: CCK
DRAWN BY: SAK
PROTO CYCLE: 01/29/21
DOCUMENT DATE: 03/31/21

PROFESSIONAL ENGINEER
No. 39490-B
EXPIRES 12/31/2024

03/30/2021

REAR REFRIGERATION PLAN

SHEET **R1.1**

EXISTING CONDITIONS WERE TAKEN FROM ORIGINAL DRAWINGS AND MAY NOT REFLECT EXACT AS-BUILT CONDITIONS. CONTRACTOR SHALL VERIFY ALL EXISTING CONDITIONS PRIOR TO SUBMITTING FINAL BIDS. CONTRACTOR SHALL CAREFULLY COORDINATE NEW WORK AND DEMOLITION WITH ALL OTHER DISCIPLINES AND EXISTING CONDITIONS.

EACH SUBCONTRACTOR IS RESPONSIBLE FOR HAVING A THOROUGH KNOWLEDGE OF ALL DRAWINGS AND SPECIFICATIONS IN THEIR RELATED FIELD. THE FAILURE TO ACQUAINT THEMSELVES WITH THIS KNOWLEDGE DOES NOT RELIEVE THE RESPONSIBILITY OF PERFORMING THE WORK PROPERLY. NO ADDITIONAL COMPENSATION SHALL BE ALLOWED BECAUSE OF CONDITIONS THAT OCCUR DUE TO FAILURE TO FAMILIARIZE WORKERS WITH THIS KNOWLEDGE.