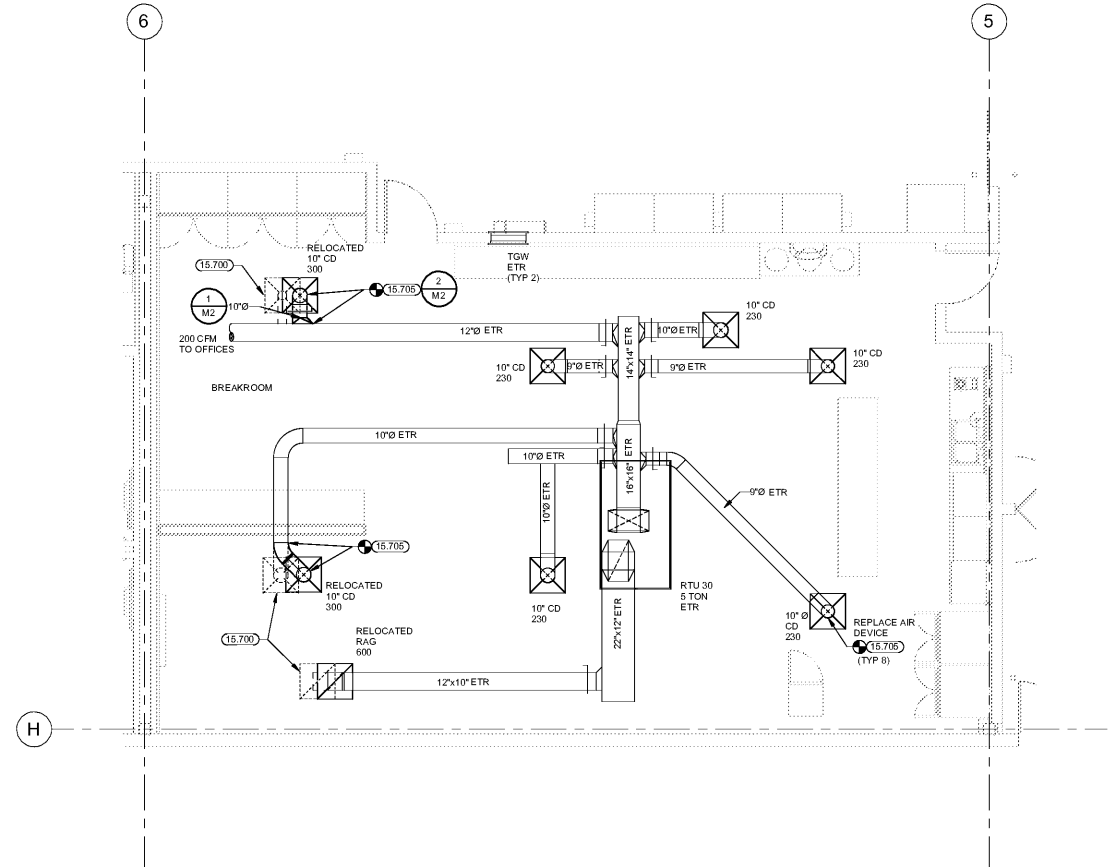
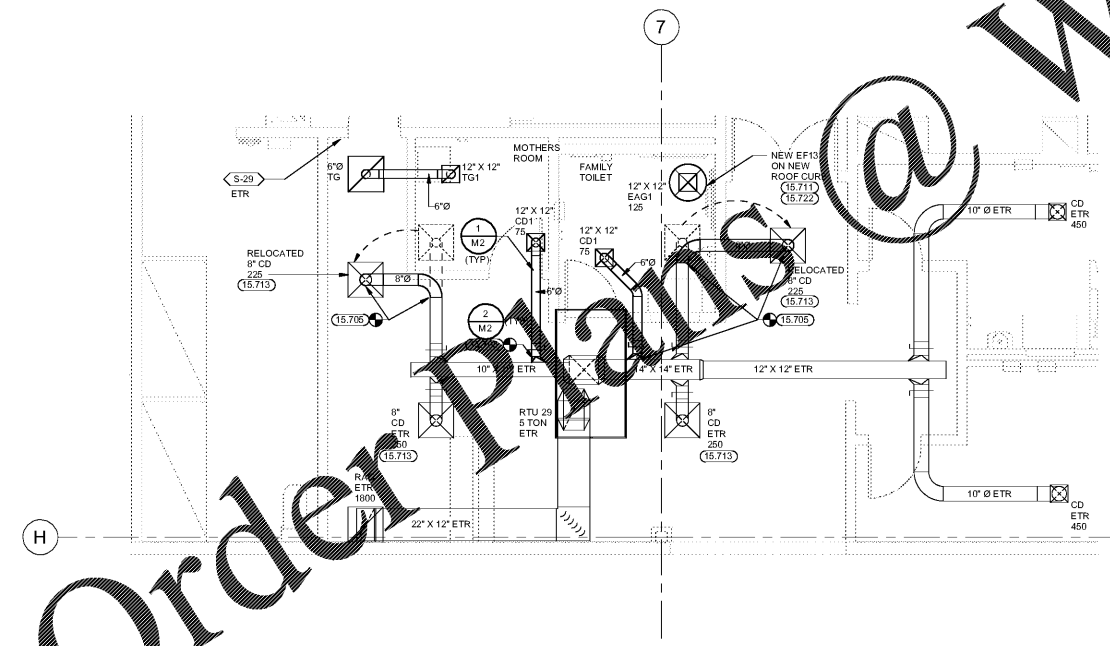


KEYNOTES

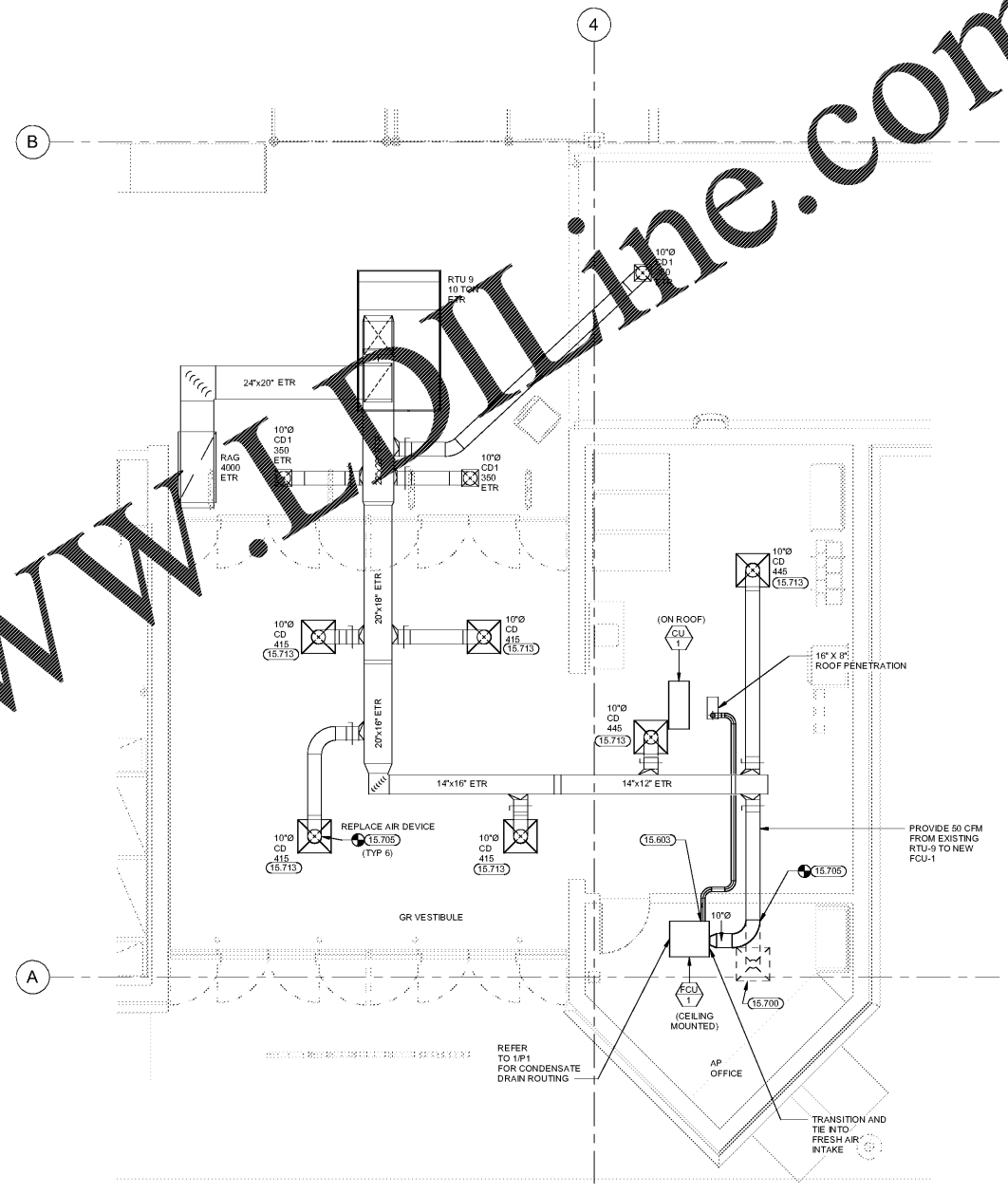
- 15.603 AT ALL POINTS WHERE SUCTION LINES RISE, PROVIDE A SUCTION LINE TRAP AT THE BASE OF THE RISER.
- 15.700 REMOVE AIR DEVICES AND DUCTWORK SHOWN DASHED UNLESS OTHERWISE NOTED AND CAP-OFF DUCTWORK TO REMAIN. PATCH AND REPAIR DUCTWORK AS NEEDED INCLUDING SEALING DUCTWORK TO REMAIN PER SPECIFICATIONS.
- 15.705 CONNECT TO EXISTING SUPPLY/RETURN DUCTWORK INDICATED.
- 15.711 REFER TO ARCHITECTURAL ROOF PLAN AND STRUCTURAL PLANS FOR DETAILS OF ROOF CURB INSTALLATION.
- 15.713 REBALANCE AIR DEVICE TO CFM SHOWN. REDISTRIBUTE AIR FROM EXISTING DUCTWORK TO MATCH NEW CFM REQUIREMENTS. FIELD VERIFY LOCATION OF EXISTING DUCTWORK.
- 15.722 COORDINATE DUCT PENETRATIONS THROUGH ROOF, AND ROUTING OF DUCTWORK WITH CONDUITS, FIRE PROTECTION PIPING, LIGHTS AND STRUCTURE.



3 BREAKROOM MECHANICAL PLAN
1/4" = 1'-0"



2 REAR ALCOVE MECHANICAL PLAN
1/4" = 1'-0"



1 GR VESTIBULE MECHANICAL PLAN
1/4" = 1'-0"

Order Plans @ www.LDOnline.com

www.LDOnline.com

STIPULATION FOR REUSE
THIS DRAWING IS THE PROPERTY OF HENDERSON ENGINEERS. IT IS TO BE USED ONLY FOR THE PROJECT AND SITE SPECIFICALLY IDENTIFIED HEREON. IT IS NOT TO BE REPRODUCED, COPIED, OR TRANSMITTED IN ANY FORM OR BY ANY MEANS, ELECTRONIC OR MECHANICAL, INCLUDING PHOTOCOPYING, RECORDING, OR BY ANY INFORMATION STORAGE AND RETRIEVAL SYSTEM. WITHOUT THE WRITTEN PERMISSION OF HENDERSON ENGINEERS, NO PART OF THIS DRAWING IS TO BE REPRODUCED OR TRANSMITTED IN ANY FORM OR BY ANY MEANS, ELECTRONIC OR MECHANICAL, INCLUDING PHOTOCOPYING, RECORDING, OR BY ANY INFORMATION STORAGE AND RETRIEVAL SYSTEM.

CONSULTANTS
HENDERSON ENGINEERS
6845 LEBLANCHE SUITE 100
PRATTVILLE, AL 36068
TEL: 334.742.2900 FAX: 334.742.1001
WWW.HENDERSONENGINEERS.COM
AL: C089054000 CA: 3186
EXPIRES: 1/31/2022

Walmart
PRATTVILLE, AL
1803 COBBS FORD ROAD
STORE NO. 0485-249
JOB NUMBER: 218000483 | PHOTO: 188

ISSUE BLOCK

NO.	DATE	DESCRIPTION

CHECKED BY: AI
DRAWN BY: TNJ
PROTO CYCLE: 01/29/21
DOCUMENT DATE: 03/31/21



03/30/2021
ENLARGED MECHANICAL PLANS

SHEET: **M1.1**

EXISTING CONDITIONS WERE TAKEN FROM ORIGINAL DRAWINGS AND MAY NOT REFLECT EXACT "AS-BUILT" CONDITIONS. CONTRACTOR SHALL FIELD VERIFY ALL EXISTING CONDITIONS PRIOR TO SUBMITTING FINAL BIDS. CONTRACTOR SHALL CAREFULLY COORDINATE NEW WORK AND DEMOLITION WITH ALL OTHER DISCIPLINES AND EXISTING CONDITIONS.

EACH SUBCONTRACTOR IS RESPONSIBLE FOR HAVING A THOROUGH KNOWLEDGE OF ALL DRAWINGS AND SPECIFICATIONS IN THEIR RELATED FIELD. THE FAILURE TO ACCOUNT THEMSELVES WITH THIS KNOWLEDGE DOES NOT RELIEVE THE RESPONSIBILITY OF PERFORMING THE WORK PROPERLY. NO ADDITIONAL COMPENSATION SHALL BE ALLOWED BECAUSE OF CONDITIONS THAT OCCUR DUE TO FAILURE TO FAMILIARIZE WORKERS WITH THIS KNOWLEDGE.