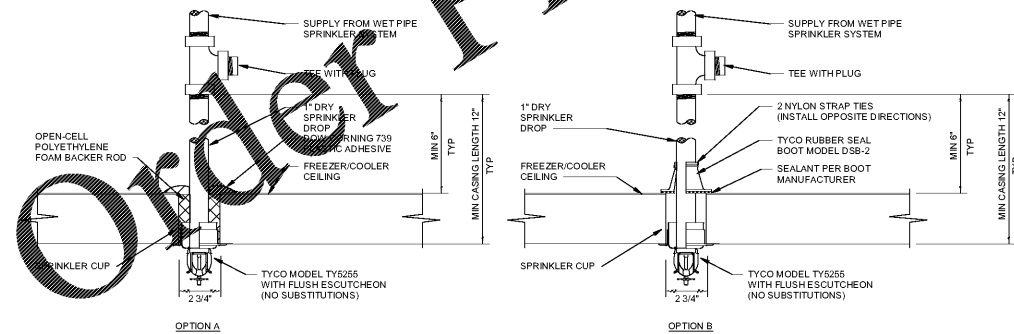


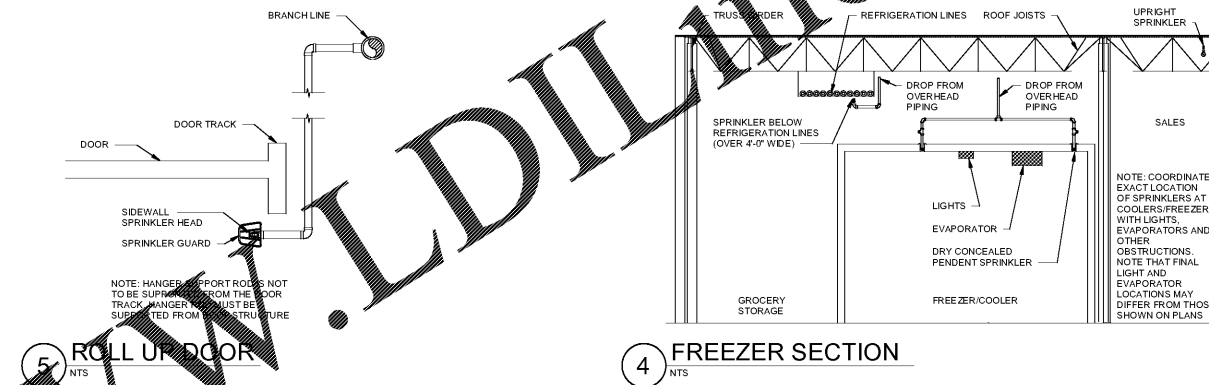
- ### OPTION "A" INSTALLATION PROCEDURE
- CORE DRILL 2 1/2" DIAMETER HOLE IN THE FREEZER/COOLER INSULATED CEILING PANEL. LOCATE AND REQUIRED SPRINKLER PROTECTION IN ACCORDANCE WITH NFPA 13 OBSTRUCTION CRITERIA (SSP TYPE SPRINKLERS). MAINTAIN 6" CLEARANCE FROM COOLER SEAMS.
 - INSTALL DRY PENDENT SPRINKLER PER MANUFACTURER'S INSTALLATION REQUIREMENTS.
 - COMPLETELY FILL ANNULAR CEILING OPENING BETWEEN THE ESCUTCHEON AND TOP OF CEILING PANEL WITH OPEN-CELL POLYETHYLENE FOAM BACKER ROD. EXPANDED FOAM IS NOT PERMITTED.
 - INJECT DOW CORNING 739 PLASTIC ADHESIVE SEALANT INTO AND AROUND THE TOP OF THE FREEZER/COOLER CEILING CORE OPENING IN ACCORDANCE WITH SEALANT MANUFACTURER'S INSTRUCTIONS.

- ### OPTION "B" INSTALLATION PROCEDURE
- CORE DRILL 2 1/2" DIAMETER HOLE IN THE FREEZER/COOLER INSULATED CEILING PANEL. LOCATE AND REQUIRED SPRINKLER PROTECTION IN ACCORDANCE WITH NFPA 13 OBSTRUCTION CRITERIA (SSP TYPE SPRINKLERS). MAINTAIN 6" CLEARANCE FROM COOLER SEAMS.
 - INSTALL TYCO DRY PENDENT SPRINKLER PER MANUFACTURER'S INSTALLATION REQUIREMENTS. INSERT BOOT PRIOR TO MAKE-UP WITH PPA.
 - SEAL ALL INTERFACES BETWEEN BOOT FLANGE AND TOP OF FREEZER/COOLER PANEL WITH ADHESIVE PROVIDED WITH BOOT IN ACCORDANCE WITH MANUFACTURER'S INSTRUCTIONS.
 - APPLY SEALANT PER BOOT AROUND DRY SPRINKLER BARREL PER MANUFACTURER'S INSTRUCTIONS.

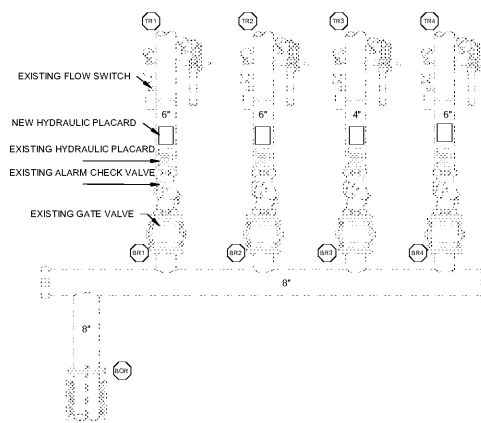


NOTE: CONTRACTOR TO SEAL DRY PENDENT SPRINKLERS AT FREEZER/COOLER USING ONE OF THE OPTIONS ABOVE. NO OTHER SEALANTS ARE PERMITTED

3 FREEZER COOLER DRY PENDENT

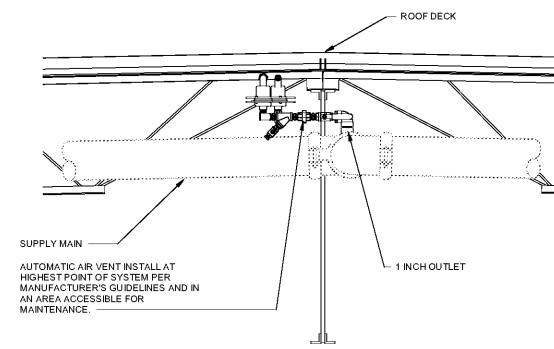


4 FREEZER SECTION



2 EXISTING FIRE SPRINKLER RISER

ALL FIRE PROTECTION TO REMAIN. NO NEW WORK UNLESS NOTED OTHERWISE. FIRE RISER DETAIL FOR REFERENCE ONLY.



1 AIR RELEASE VENT

EXISTING CONDITIONS WERE TAKEN FROM ORIGINAL DRAWINGS AND MAY NOT REFLECT EXACT "AS-BUILT" CONDITIONS. CONTRACTOR SHALL FIELD VERIFY ALL EXISTING CONDITIONS PRIOR TO SUBMITTING FINAL BIDS. CONTRACTOR SHALL CAREFULLY COORDINATE NEW WORK AND DEMOLITION WITH ALL OTHER DISCIPLINES AND EXISTING CONDITIONS.

EACH SUBCONTRACTOR IS RESPONSIBLE FOR HAVING A THOROUGH KNOWLEDGE OF ALL DRAWINGS AND SPECIFICATIONS IN THEIR RELATED FIELD. THE FAILURE TO ACQUAINT THEMSELVES WITH THIS KNOWLEDGE DOES NOT RELIEVE THE RESPONSIBILITY OF PERFORMING THE WORK PROPERLY. NO ADDITIONAL COMPENSATION SHALL BE ALLOWED BECAUSE OF CONDITIONS THAT OCCUR DUE TO FAILURE TO FAMILIARIZE WORKERS WITH THIS KNOWLEDGE.

STIPULATION FOR REUSE
THIS DRAWING IS THE PROPERTY OF HENDERSON ENGINEERS. IT IS TO BE USED ONLY FOR THE PROJECT AND SITE SPECIFICALLY IDENTIFIED HEREON. IT IS NOT TO BE REPRODUCED, COPIED, OR TRANSMITTED IN ANY FORM OR BY ANY MEANS, ELECTRONIC OR MECHANICAL, INCLUDING PHOTOCOPYING, RECORDING, OR BY ANY INFORMATION STORAGE AND RETRIEVAL SYSTEM, WITHOUT THE WRITTEN PERMISSION OF HENDERSON ENGINEERS. THIS DRAWING IS THE PROPERTY OF HENDERSON ENGINEERS AND IS TO BE USED ONLY FOR THE PROJECT AND SITE SPECIFICALLY IDENTIFIED HEREON.

CONSULTANTS
HENDERSON ENGINEERS
6845 LEUKALINE SUITE 200
TEL: (916) 265-2500 FAX: (916) 265-2001
WWW.HENDERSONENGINEERS.COM
AL: (916) 265-2500 CA: (916) 265-2001 EXP: (916) 265-2002

Walmart
PRATTVILLE, AL
1803 COBBS FORD ROAD
STORE NO. 00485-249
JOB NUMBER: 21800048 | PHOTO: 188

ISSUE BLOCK	

CHECKED BY: RASMJS
DRAWN BY: MLG
PROTO CYCLE: 01/29/21
DOCUMENT DATE: 03/31/21



FIRE PROTECTION DETAILS

SHEET: FP3