

KEYNOTES

- 13.920 EXISTING SPRINKLERS AND BRANCHLINES TO REMAIN.
- 13.951 PROVIDE NEW MAIN AS SHOWN. LOCATE MAIN ABOVE THE BOTTOM CHORD OF THE JOIST(S). FIELD VERIFY EXACT ROUTE THROUGH EXISTING BUILDING. COORDINATE WITH ALL NEW AND EXISTING EQUIPMENT AND WALLS. FOR MAINS 4" AND LARGER REF XFFX.
- 13.956 PROVIDE NEW BRANCHLINES IN THIS AREA. FIELD VERIFY EXACT ROUTE THROUGH EXISTING BUILDING.
- 13.987 REPLACE EXISTING 1/2" UPRIGHT SPRINKLERS WITH TYCO TYP831 11.2K UPRIGHT SPRINKLERS. REFERENCE FPI SPRINKLER SYMBOL LEGEND FOR SPECIFIC SPRINKLER TO BE INSTALLED. IT IS THE RESPONSIBILITY OF THE CONTRACTOR TO PROVIDE THE NECESSARY FITTINGS WHERE NEW SPRINKLERS DO NOT FIT THE EXISTING OUTLETS.

HYDRAULIC DESIGN	
SYSTEM #1 REMOTE AREA #A	SALES FLOOR
SPRINKLERS CALCULATED	12 SPRINKLERS
SPRINKLER PRESSURE	10 PSI
HOSE ALLOWANCE	250 GPM
SYSTEM FLOW DEMAND @ SRC	676.8 GPM
SYSTEM PRESSURE DEMAND @ SRC	27.9 PSI
SYSTEM SAFETY FACTOR	29.3 PSI

HYDRAULIC DESIGN	
SYSTEM #1 REMOTE AREA #A	SALES FLOOR
SPRINKLERS CALCULATED	2 SPRINKLERS
SPRINKLER PRESSURE	25 PSI
HOSE ALLOWANCE	250 GPM
SYSTEM FLOW DEMAND @ SRC	362 GPM
SYSTEM PRESSURE DEMAND @ SRC	37.3 PSI
SYSTEM SAFETY FACTOR	21.8 PSI

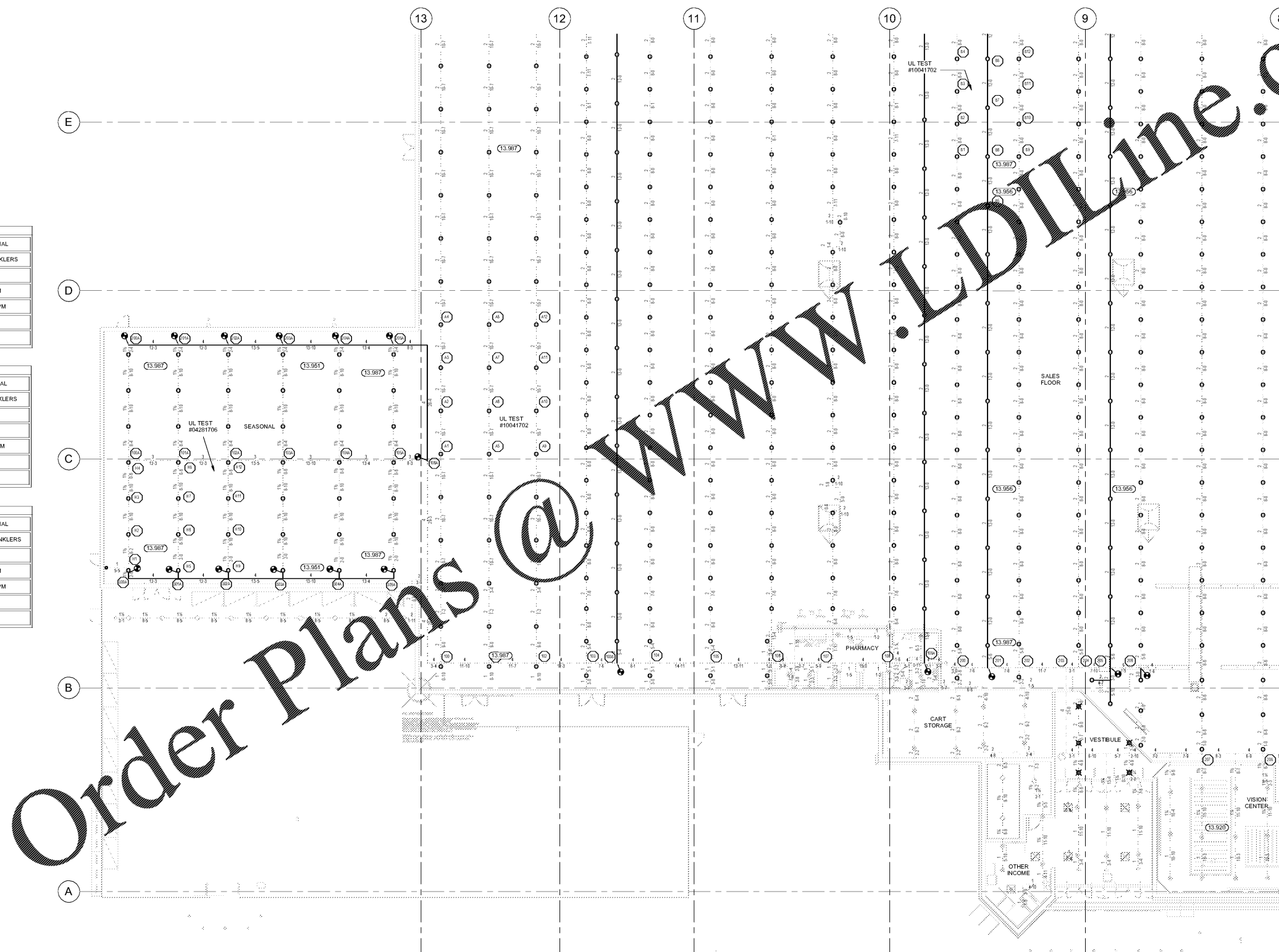
HYDRAULIC DESIGN	
SYSTEM #2 REMOTE AREA #B	SALES FLOOR
SPRINKLERS CALCULATED	12 SPRINKLERS
SPRINKLER PRESSURE	10 PSI
HOSE ALLOWANCE	250 GPM
SYSTEM FLOW DEMAND @ SRC	678.2 GPM
SYSTEM PRESSURE DEMAND @ SRC	30.5 PSI
SYSTEM SAFETY FACTOR	26.8 PSI

HYDRAULIC DESIGN	
SYSTEM #2 REMOTE AREA #B	SALES FLOOR
SPRINKLERS CALCULATED	2 SPRINKLERS
SPRINKLER PRESSURE	25 PSI
HOSE ALLOWANCE	250 GPM
SYSTEM FLOW DEMAND @ SRC	362 GPM
SYSTEM PRESSURE DEMAND @ SRC	39.9 PSI
SYSTEM SAFETY FACTOR	19.2 PSI

HYDRAULIC DESIGN	
SYSTEM #1 REMOTE AREA #H	SEASONAL
SPRINKLERS CALCULATED	2 SPRINKLERS
SPRINKLER PRESSURE	25 PSI
HOSE ALLOWANCE	250 GPM
SYSTEM FLOW DEMAND @ SRC	362.1 GPM
SYSTEM PRESSURE DEMAND @ SRC	38.2 PSI
SYSTEM SAFETY FACTOR	20.9 PSI

HYDRAULIC DESIGN	
SYSTEM #1 REMOTE AREA #H	SEASONAL
SPRINKLERS CALCULATED	9 SPRINKLERS
SPRINKLER PRESSURE	16 PSI
HOSE ALLOWANCE	250 GPM
SYSTEM FLOW DEMAND @ SRC	612.6 GPM
SYSTEM PRESSURE DEMAND @ SRC	46.3 PSI
SYSTEM SAFETY FACTOR	11.4 PSI

HYDRAULIC DESIGN	
SYSTEM #1 REMOTE AREA #H	SEASONAL
SPRINKLERS CALCULATED	12 SPRINKLERS
SPRINKLER PRESSURE	10 PSI
HOSE ALLOWANCE	250 GPM
SYSTEM FLOW DEMAND @ SRC	683.2 GPM
SYSTEM PRESSURE DEMAND @ SRC	46.3 PSI
SYSTEM SAFETY FACTOR	10.9 PSI



Order Plans @

1 ENLARGED FIRE PROTECTION PLAN
 SCALE: 3/32" = 1'-0"

EXISTING CONDITIONS WERE TAKEN FROM ORIGINAL DRAWINGS AND MAY NOT REFLECT EXACT "AS-BUILT" CONDITIONS. CONTRACTOR SHALL FIELD VERIFY ALL EXISTING CONDITIONS PRIOR TO SUBMITTING FINAL BIDS. CONTRACTOR SHALL CAREFULLY COORDINATE NEW WORK AND DEMOLITION WITH ALL OTHER DISCIPLINES AND EXISTING CONDITIONS.

EACH SUBCONTRACTOR IS RESPONSIBLE FOR HAVING A THOROUGH KNOWLEDGE OF ALL DRAWINGS AND SPECIFICATIONS IN THEIR RELATED FIELD. THE FAILURE TO ACQUAINT THEMSELVES WITH THIS KNOWLEDGE DOES NOT RELIEVE THE RESPONSIBILITY OF PERFORMING THE WORK PROPERLY. NO ADDITIONAL COMPENSATION SHALL BE ALLOWED BECAUSE OF CONDITIONS THAT OCCUR DUE TO FAILURE TO FAMILIARIZE WORKERS WITH THIS KNOWLEDGE.

STIPULATION FOR REUSE
 THIS DRAWING IS THE PROPERTY OF HENDERSON ENGINEERS. IT IS TO BE USED ONLY FOR THE PROJECT AND SITE SPECIFICALLY IDENTIFIED HEREON. IT IS NOT TO BE REPRODUCED, COPIED, OR TRANSMITTED IN ANY FORM OR BY ANY MEANS, ELECTRONIC OR MECHANICAL, INCLUDING PHOTOCOPYING, RECORDING, OR BY ANY INFORMATION STORAGE AND RETRIEVAL SYSTEM, WITHOUT THE WRITTEN PERMISSION OF HENDERSON ENGINEERS. FOR MORE INFORMATION, CONTACT HENDERSON ENGINEERS AT THE ADDRESS BELOW OR BY PHONE AT THE NUMBER LISTED. THIS DRAWING IS VOID WHERE IT CONTRADICTS THE LAW.

CONSULTANTS
HENDERSON ENGINEERS
 6845 LEBLANCHE SUITE 200
 TEL 913.742.2800 FAX 913.742.1001
 WWW.HENDERSONENGINEERS.COM
 1803 COBBS FORD ROAD
 AL COBB COUNTY, GA 30128
 AL COBB COUNTY, GA 30128
 EXPIRES 1/31/2022

Walmart AL
PRATTVILLE, AL
 1803 COBBS FORD ROAD
 STORE NO. 00485-249
 21800485 | PHOTO: 188

2021 MAJOR PROJECT

ISSUE BLOCK	

CHECKED BY: NAWMJS
 DRAWN BY: MLG
 PROTO CYCLE: 01/29/21
 DOCUMENT DATE: 03/31/21



ENLARGED FIRE SPRINKLER PLAN

SHEET: **FP.2**