

SANITARY COVE BASE SURFACE PREPARATION REQUIREMENTS

1. REMOVE EXISTING WALL BASE. AT EXISTING WALL CONDITIONS, REMOVE ALL GYPSUM BOARD BELOW 12" AFF AND REPLACE WITH GLASS-MAT BACKER OF SAME THICKNESS. IF FRP IS IN GOOD CONDITION REPLACE DAMAGED BASE WITH NEW BASE.
2. REMOVE AND REPLACE WALL FINISH TO NEAREST JOINT AS REQUIRED TO PERFORM GLASS-MAT BACKER INSTALLATION.
3. CUT BACK EXISTING QUARRY TILE FLOORING AS REQUIRED TO PROVIDE 1" CLEAR FROM FINISHED SURFACE TO EDGE OF TILE.
4. REMOVE ALL DEBRIS AND ANY REMAINING GROUT. CLEAN SURFACES AS REQUIRED FOR PROPER INSTALLATION OF CONSTRUCTION MATERIAL AND FINISHES.
5. INSTALL BUILDING TAPE AND FIBERGLASS MESH TAPE AS INDICATED.

SGA Design Group, P.C.
 1437 South Boulder, Suite 550
 Tulsa, Oklahoma 74116
 P: (918) 587-8800
 F: (918) 587-8001
 www.sgadesigngroup.com

STIPULATION FOR REUSE
 THIS DRAWING IS THE PROPERTY OF SGA DESIGN GROUP. IT IS TO BE USED ONLY FOR THE PROJECT AND LOCATION SPECIFICALLY IDENTIFIED HEREIN. IT IS NOT TO BE REPRODUCED, COPIED, OR TRANSMITTED IN ANY FORM OR BY ANY MEANS, ELECTRONIC OR MECHANICAL, INCLUDING PHOTOCOPYING, RECORDING, OR BY ANY INFORMATION STORAGE AND RETRIEVAL SYSTEM, WITHOUT THE WRITTEN PERMISSION OF SGA DESIGN GROUP.

CONSULTANTS

Walmart
 PRATTVILLE, AL
 1903 COBBS FORD RD
 STORE NO. 0465-249
 20240888 | PHOTO

ISSUE BLOCK

NO.	DATE	DESCRIPTION

CHECKED BY: AT/RC/AVT
 DRAWN BY: NL
 PROTO CYCLE: 01/29/21
 DOCUMENT DATE: 03/31/21

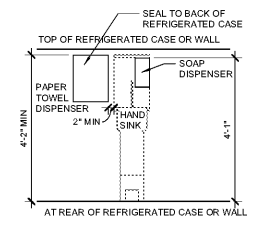
THE RECORD COPY OF THIS DRAWING IS TO BE KEPT AT THE OFFICE OF SGA DESIGN GROUP. THIS ELECTRONIC DOCUMENT IS RELEASED FOR THE PURPOSE OF REFERENCE, COORDINATION, AND/OR FACILITY MANAGEMENT. THIS DRAWING SHALL NOT BE COPIED, REPRODUCED, OR TRANSMITTED IN ANY FORM OR BY ANY MEANS, ELECTRONIC OR MECHANICAL, INCLUDING PHOTOCOPYING, RECORDING, OR BY ANY INFORMATION STORAGE AND RETRIEVAL SYSTEM, WITHOUT THE WRITTEN PERMISSION OF SGA DESIGN GROUP.

STATE OF ALABAMA
 ARIANE V. TATTERSHALL
 2016
 03/31/2021

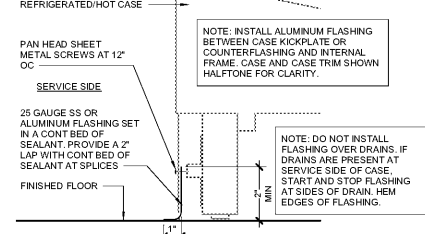
GROCERY DETAILS

SHEET: **GA3**

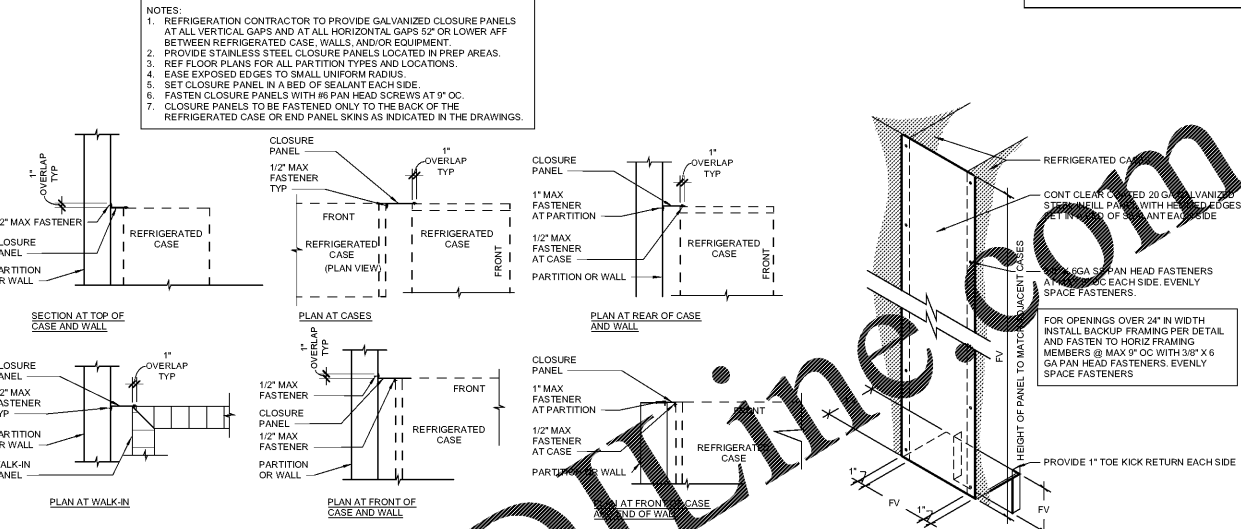
9 HAND SINK ELEVATION
 1/2" = 1'-0"



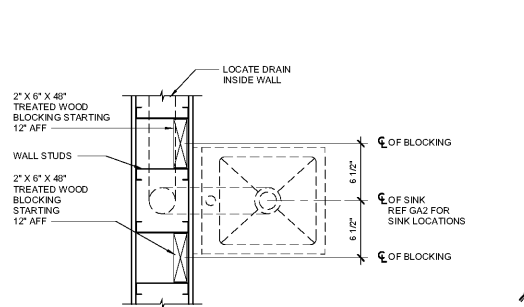
8 CASE FLASHING AT SERVICE DEPT
 3/4" = 1'-0"



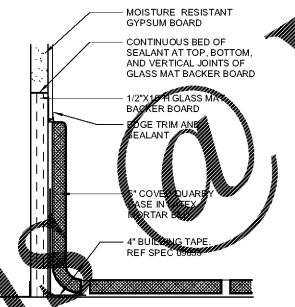
7 CLOSURE PANEL DETAIL
 3/4" = 1'-0"



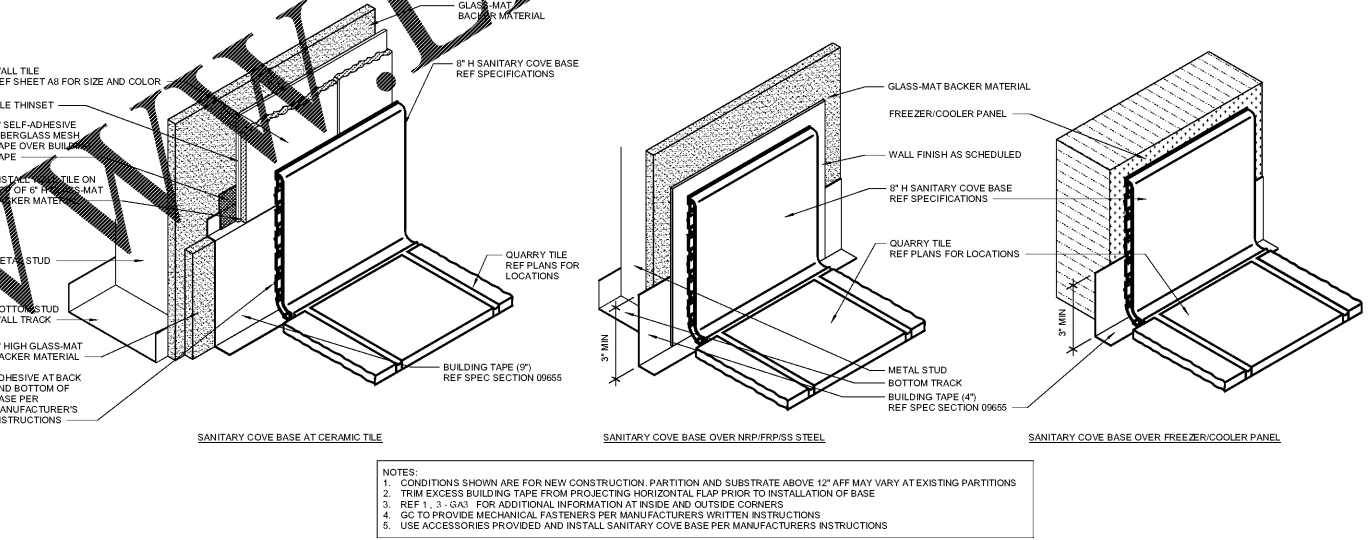
6 BLOCKING AT WALL MOUNTED HAND SINK
 1 1/2" = 1'-0"



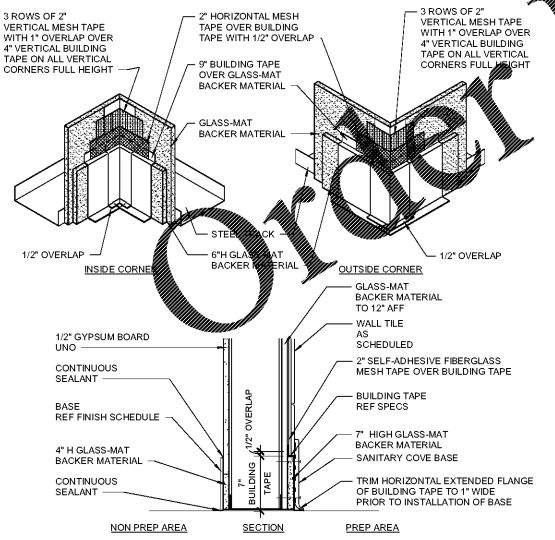
5 QUARRY TILE BASE
 6\"/>



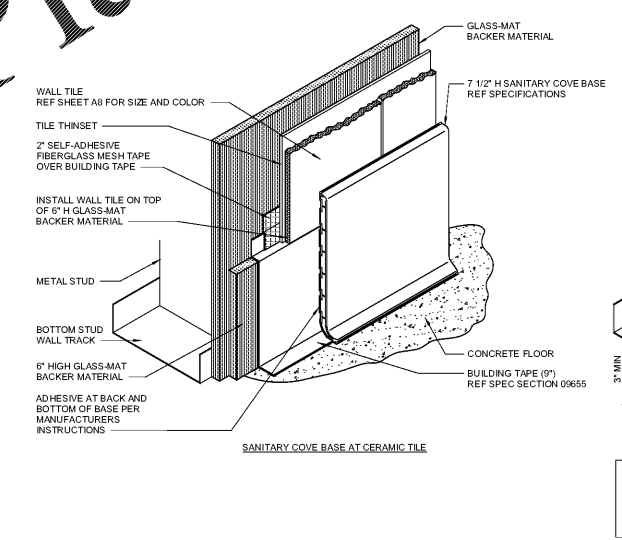
4 SANITARY COVE BASE DETAILS (QT)
 3\"/>



3 WALL DETAIL
 1 1/2" = 1'-0"



2 SANITARY COVE BASE DETAILS (CONCRETE)
 3\"/>



1 SANITARY COVE BASE ACCESSORY DETAILS
 3\"/>

