

Digitally signed by Ariane V. Tattershall
DN: cn=Ariane V. Tattershall, o=SGA Design Group, C=US
Date: 2024.03.15 12:49:32 -0800

KEYNOTES	
3.13	6" WIDE X 6" HIGH CONTINUOUS CONCRETE CURB WITH SMOOTH HAND TROWEL FINISH AT BASE OF WALK-IN BOX
5.20	STEEL PROTECTOR ANGLE REF 6-OP1 & 10-OP1
5.54	32" GALVANIZED STEEL BOLLARD, 4" OD FURNISHED BY OWNER, INSTALLED BY GC.

SHEET NOTES	
1.	ALL EQUIPMENT SHOWN DASHED TO BE FURNISHED BY WALMART UNO.
2.	ALL STEEL RACKS TO BE FURNISHED BY WALMART UNO. REFER TO RACK ANCHORAGE PLAN FOR STEEL RACK AND/OR GONDOLA SHELVING FIXTURE ANCHORING REQUIREMENTS.
3.	REPAIR BOLT HOLES AND SPALLS RESULTING FROM MERCHANDISE FIXTURE AND/OR STORAGE RACK RELOCATION OR REMOVAL. REF SPEC 0305. FILL ALL BOLT HOLES AND SPALLS RESULTING FROM FIXTURE AND/OR STORAGE RACK RELOCATION OR REMOVAL IN NON CUSTOMER ACCESSIBLE AREAS WITH NON SHRINK GROUT.
4.	STUD WALL DIMENSIONS ARE TO THE FACE OF THE STUDS.
5.	WALLS AND INFILL OF EXISTING OPENINGS ARE TO MATCH THE CONSTRUCTION AND FINISHES OF ADJACENT EXISTING WALLS.
6.	PROPER INSTALLATION OF JOINT SEALANTS IS CRITICAL TO MEETING WALMART QUALITY ASSURANCE STANDARDS. PROVIDE SEALANTS IN ACCORDANCE WITH DRAWINGS AND SPECIFICATIONS. REFERENCE SECTION 07100 FOR SEALANT TYPE.
7.	ALL JOINTS BETWEEN DISSIMILAR MATERIALS SHALL BE SEALED AS REQUIRED FOR A COMPLETE AND PROPER INSTALLATION REGARDLESS OF WHETHER SHOWN IN THE DRAWINGS OR INDICATED IN THE SPECIFICATIONS. SURFACINGS NOT SHOWN OR SPECIFIED SHALL BE SEALED WITH SEALANTS CONSISTENT WITH SPECIFIED MATERIALS OR AS COMMENTED BY THE MANUFACTURER FOR THE SPECIFIC APPLICATION.
8.	REMOVE ALL UTILITY SERVICE LINES (PIPES AND CONDUTIT) WITHIN STUD WALLS WHEREVER POSSIBLE. ON COOLER/FREEZER PANELS IN FOOD PREP AREAS WHERE UTILITIES MUST BE EXPOSED, CONTRACTOR TO HAVE THE OPTION OF THE FOLLOWING: A. SURFACE MOUNT UTILITIES WITH NON-CORROSIVE ANCHORS. SEAL BOTH SIDES OF PIPE/CONDUIT TO PANEL. CONTINUOUSLY WITH SEALANT. B. INSTALL UTILITIES 1/2" OFF FACE OF PANEL TO ALLOW FOR CLEANING. USE ONLY NON-CORROSIVE ANCHORS. APPLY CONTINUOUS SEALANT ALONG EDGES AND JOINTS. C. COVER UTILITIES WITH 20 GAUGE STAINLESS STEEL BENT PLATES MOUNTED TO WALL WITH NON-CORROSIVE ANCHORS. APPLY CONTINUOUS SEALANT ALONG EDGES AND JOINTS.
9.	RELOCATION AND SETUP OF GONDOLAS AND/OR RACKING AS INDICATED ON FXS SHEETS WILL BE PERFORMED BY OTHERS. ANCHORING OF UPRIGHTS TO SPECIAL PROJECTS. RELOCATION AND SETUP OF GONDOLAS AND/OR RACKING AS INDICATED ON THIS SHEET WILL BE PERFORMED BY GC.
10.	REMOVAL OF GONDOLAS AND/OR RACKING AS INDICATED ON FXS SHEETS WILL BE PERFORMED BY OTHERS. ON SPECIAL PROJECTS, REMOVAL OF GONDOLAS AND/OR RACKING AS INDICATED ON THIS SHEET WILL BE PERFORMED BY GC.
11.	LOCATE ALL 4" DEEP RACKS 6" FROM WALLS AND COLUMNS UNO.
12.	LOCATE ALL RACKS LESS THAN 4" DEEP 3" FROM ALL WALLS AND COLUMNS UNO.
13.	INSTALL ALUMINUM CORNER GUARDS AT ALL OUTSIDE CORNERS WITH WAHSCO. LOCATIONS SHOWN IN PLAN AND ELEVATION ARE NOT INDICATIVE OF ALL LOCATIONS WHERE CORNER GUARDS ARE TO BE INSTALLED.

SGA Design Group, P.C.
1437 South Boulder, Suite 550
Tulsa, Oklahoma 74116
P: (918) 587-8800
F: (918) 587-8901
www.sgadesigngroup.com

STIPULATION FOR REUSE
THIS DRAWING IS THE PROPERTY OF SGA DESIGN GROUP. IT IS TO BE USED ONLY FOR THE PROJECT AND LOCATION SPECIFICALLY IDENTIFIED HEREIN. IT IS NOT TO BE REPRODUCED, COPIED, REPRODUCED, OR TRANSMITTED IN ANY FORM OR BY ANY MEANS, ELECTRONIC OR MECHANICAL, INCLUDING PHOTOCOPYING, RECORDING, OR BY ANY INFORMATION STORAGE AND RETRIEVAL SYSTEM, WITHOUT THE WRITTEN PERMISSION OF SGA DESIGN GROUP.

CONSULTANTS

Walmart PRATTVILLE, AL
1903 COBBES FORD RD
STORE NO. 0465-249
202410988 | PHOTO

ISSUE BLOCK	

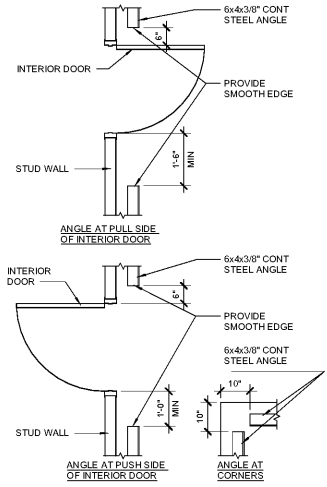
CHECKED BY: (K)RJO/AMT
DRAWN BY: NL
PROTO CYCLE: 01/29/21
DOCUMENT DATE: 03/31/21

THE RECORD COPY OF THIS DRAWING IS TO BE KEPT AT THE OFFICE OF SGA DESIGN GROUP. THIS ELECTRONIC DOCUMENT IS RELEASED FOR THE PURPOSE OF REFERENCE, COORDINATION AND/OR FACILITY MANAGEMENT. THIS DRAWING SHALL NOT BE CONSIDERED FINAL OR SIGNED BY THE ARCHITECT.

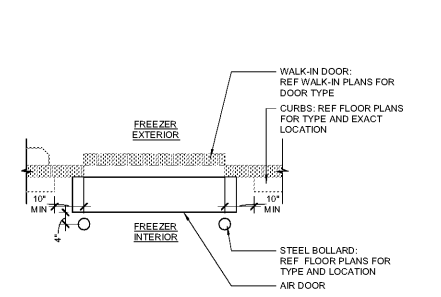
STATE OF ALABAMA
ARIANE V. TATTERSHALL
2016
Ariane Tattershall
03/31/2021

ENLARGED PLANS AND DETAILS

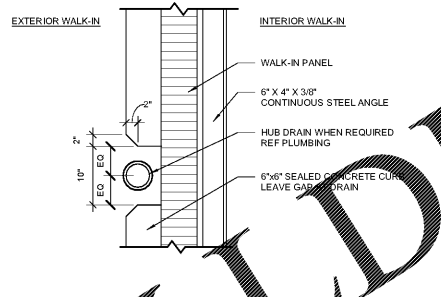
SHEET: **OP1**



10 PROTECTOR ANGLE
1/2" = 1'-0"

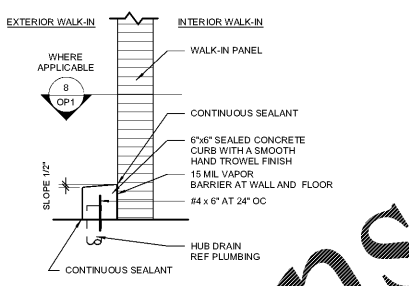


9 COOLER/FREEZER SLIDING DOOR
1/2" = 1'-0"

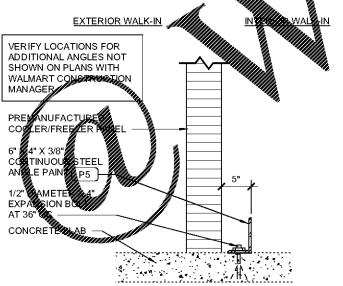


8 CURB/DRAIN
1" = 1'-0"

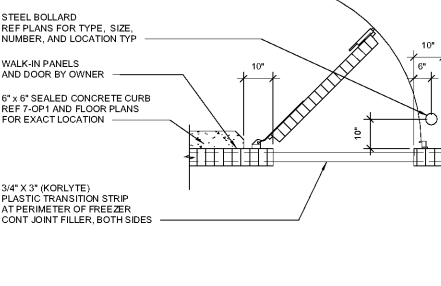
NOTE:
1. SEALED CONCRETE CURBS ARE TO BE FORMED AFTER WALLS, WALK-INS, ETC ARE IN PLACE USING FACE OF WALL OR WALK-IN PANEL AS SIDE FORM.
2. TYPICAL DETAIL, REF PLAN FOR DOOR ORIENTATION FOR WATERPROOFING REF 7-OP1



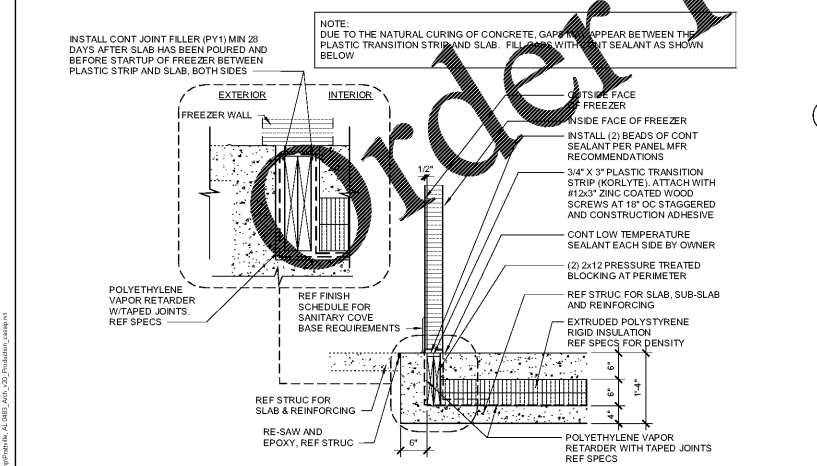
7 CURB
1" = 1'-0"



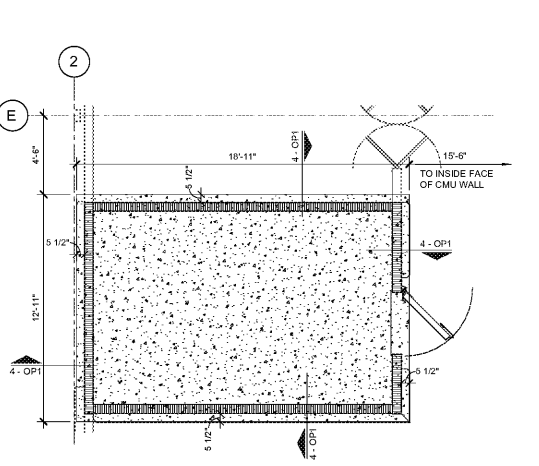
6 PROTECTOR ANGLE
1" = 1'-0"



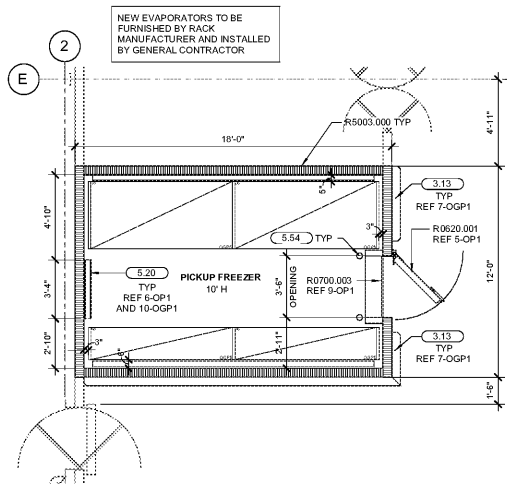
5 SINGLE ACTING DOOR AT WALK-IN
1/2" = 1'-0"



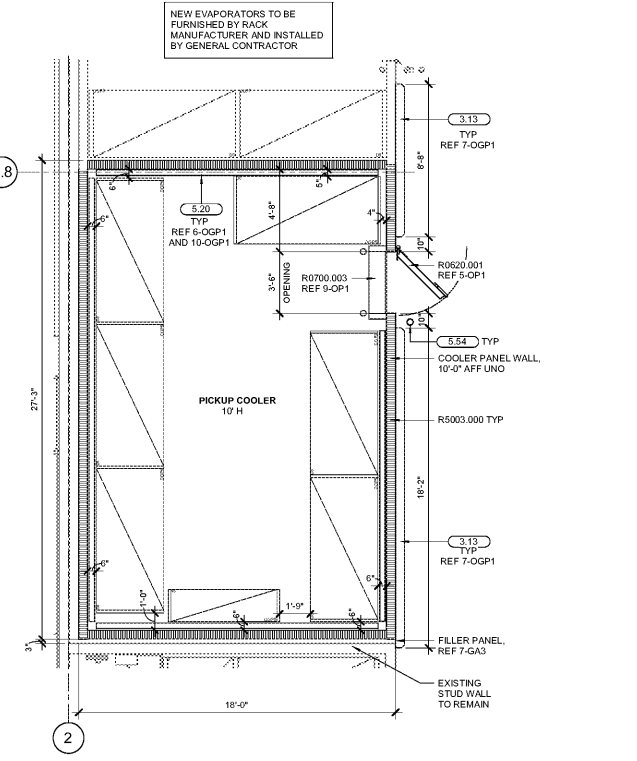
4 INSULATED FREEZER PAD
3/4" = 1'-0"



3 FREEZER UNDERSLAB PLAN
1/4" = 1'-0"



2 PICKUP 2.0 FREEZER WALK-IN
1/4" = 1'-0"



1 PICKUP 2.0 COOLER WALK-IN
1/4" = 1'-0"

Order Plans

03/31/2021 12:49:32 PM
C:\Projects\031521\2021\031521.dwg