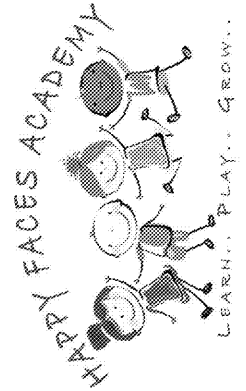


JOB NUMBER: 19221
 CHECKED BY: Checker

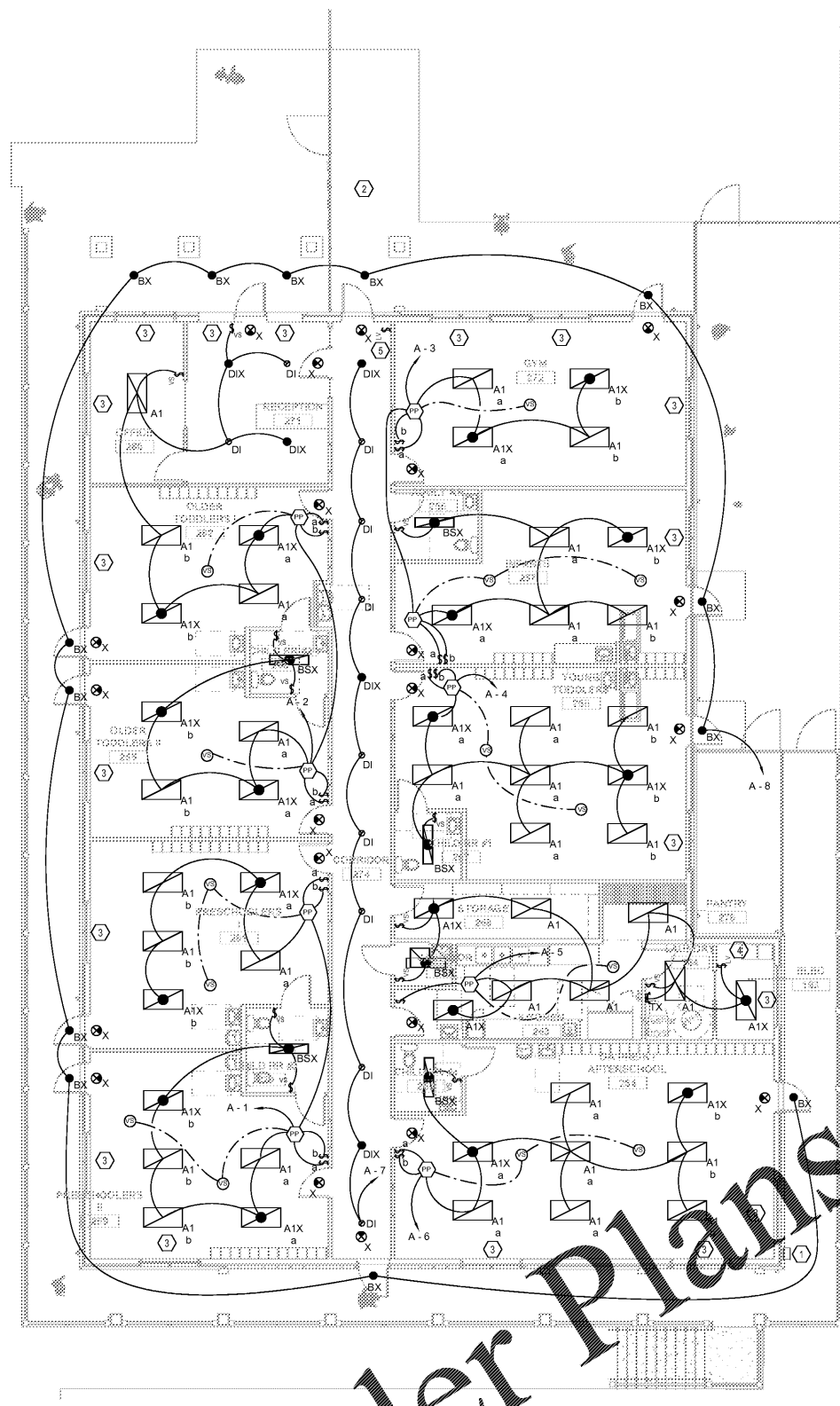
PLANNING
 ARCHITECTURE
 INTERIORS
CALBERT
 DESIGN GROUP
 INFO@CALBERTDESIGN.COM | 878.386.1744 | 2965 CHEVY CHASE ST., SUITE 600, KENNESAW, GA 30144



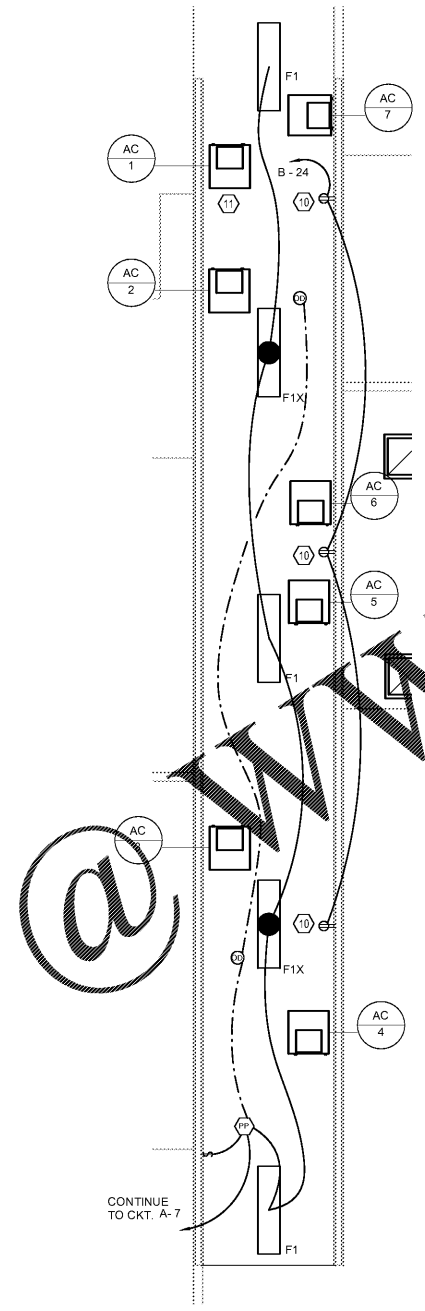
PROJECT LOCATION:
 2865 WEBB ROAD
 MILTON, GA 30004

REVISIONS		
NO	DATE:	DESCRIPTION:

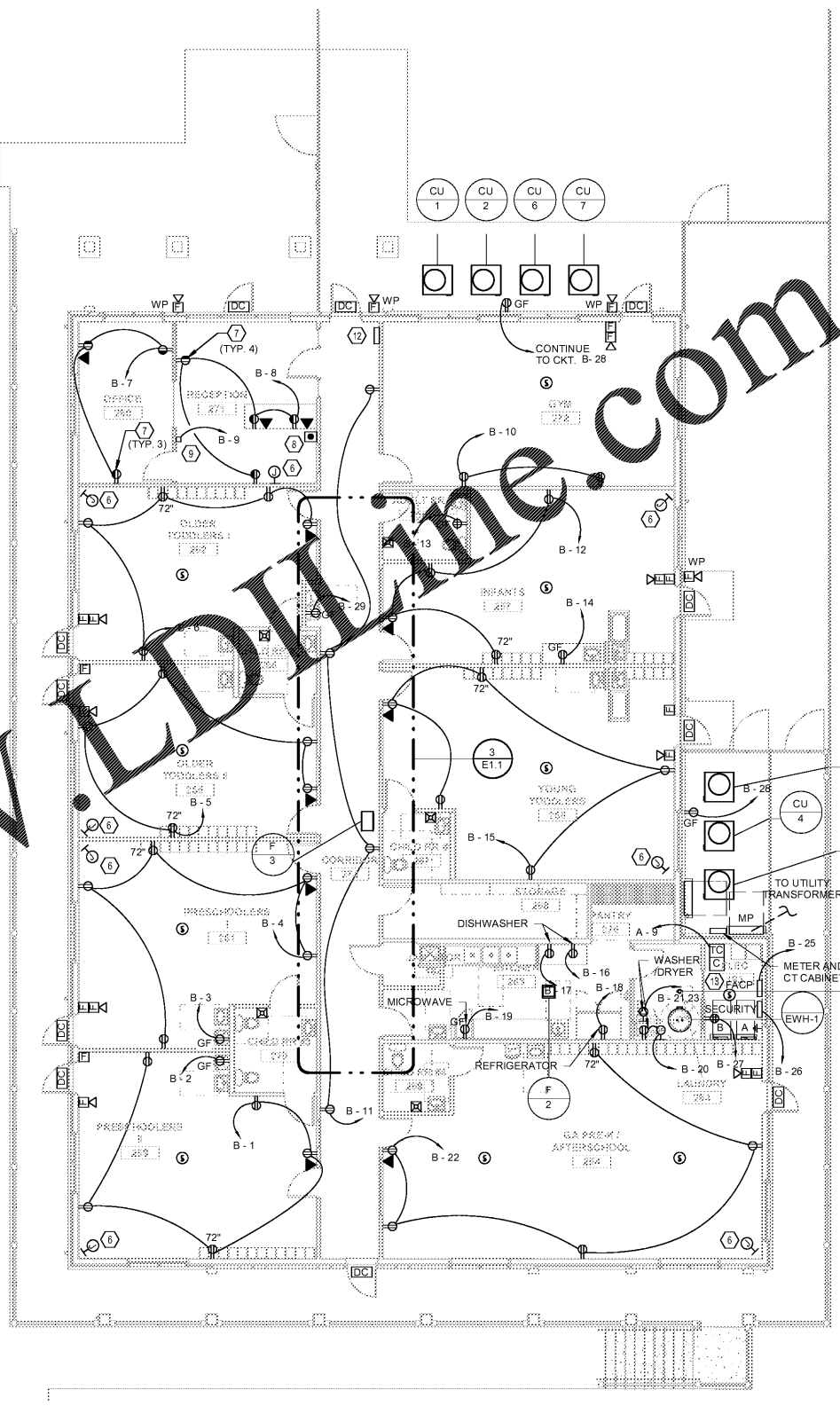
FLOOR PLANS -
 ELECTRICAL
E1.1
 DATE 10/20/20



2 FLOOR PLAN - LIGHTING
 1/8" = 1'-0"



3 ENLARGED CATWALK PLAN - ELECTRICAL
 1/4" = 1'-0"



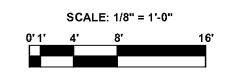
1 FLOOR PLAN - POWER
 1/8" = 1'-0"

SHEET NOTES:

- REFER TO ARCHITECTURAL CEILING PLAN FOR EXACT LOCATION OF LIGHTING FIXTURES.
- ALL EMERGENCY LIGHTING FIXTURES AND EXIT SIGNS SHALL BE PROVIDED WITH 90 MINUTES BATTERY BACKUP. LIGHTING FIXTURE IDENTIFICATIONS THAT END WITH "X" ARE EMERGENCY LIGHTING FIXTURE TYPE. CIRCUIT BATTERY BALLAST AND EXIT SIGNS TO UNSWITCHED PORTION OF CIRCUIT INDICATED.
- ALL EXIT SIGN AND EMERGENCY LIGHTING FIXTURES SHALL BE CONNECTED TO THE SAME CIRCUIT AS THE NORMAL LIGHT FOR THE AREA OF ROOM BEING SERVED. PROVIDE CONNECTION TO UNSWITCHED CONDUCTOR OF CIRCUIT FOR VOLTAGE SENSING AND BATTERY CHARGING. PROVIDE FAIL SAFE RELAY SO AS IN THE EVENT OF NORMAL POWER LOSS OR EMERGENCY SITUATION, LIGHT WILL BE TURNED ON REGARDLESS OF CONTROL SWITCH POSITION.
- ALL OUTLETS SHALL BE TAMPER RESISTANT UNLESS MOUNTED MORE THAN 66" ABOVE FINISHED FLOOR.
- ALL EXHAUST FANS SHALL BE PROVIDED WITH A LOCAL OCCUPANCY SENSOR SWITCH SEPARATE FROM THE LIGHTING SWITCH. LOCATE NEXT TO LIGHT SWITCH.

KEY NOTES:

- PHOTOCELL, TYPE ARPA-PC OR EQUAL, FOR CONNECTION TO LIGHTING RELAY PANEL TO CONTROL EXTERIOR LIGHTING.
- PROVIDE A 120V, 20 AMP, 2#10, 1#10G, 3/4" CONNECTION FOR PROVISIONS FOR SIGNAGE. CONTROLLED VIA RELAY PANEL.
- DAYLIGHTING ZONE EXCEPTION. SPACE WITH LESS THAN 150 WATTS OF GENERAL LIGHTING WITHIN SIDELIGHT DAYLIGHT ZONES COMPLYING WITH C405.2.3.2. REFER TO LIGHTING FIXTURE SCHEDULE ON SHEET E0.3.
- LOW VOLTAGE OVERRIDE MASTER SWITCH FOR ALL EXTERIOR LIGHTING.
- LOW VOLTAGE OVERRIDE MASTER SWITCH FOR ALL INTERIOR LIGHTING CONTROLLED THROUGH LIGHTING RELAY PANEL.
- COORDINATE AND PROVIDE ABOVE CEILING JUNCTION BOX FOR CCTV WITH SECURITY SYSTEM PROVIDER. CONTROLLED BY VACANCY SENSOR VIA ROOM CONTROLLER. REFER TO LIGHTING PLAN FOR ROOM CONTROLLER. LABEL OUTLETS WITH DURABLE LABELS, MELAMINE WHITE WITH BLACK LETTERING PERMANENTLY AFFIXED OR EQUAL.
- OUTLETS IN THIS AREA SHALL BE SPLIT WIRED AND CONTROLLED BY OCCUPANCY SENSOR VIA ROOM CONTROLLER. REFER TO LIGHTING PLAN FOR ROOM CONTROLLER. LABEL OUTLETS WITH DURABLE LABELS, MELAMINE WHITE WITH BLACK LETTERING PERMANENTLY AFFIXED OR EQUAL.
- PROVIDE DOOR RELEASE BUTTON. PROVIDE WIRING AS REQUIRED BY DOOR CONTROL MANUFACTURER.
- PROVIDE CHIME AND TRANSFORMER FOR DOORBELL USING 2#12, 1#12G, 3/4" C.
- PROVIDE RECEPTACLES IN THE ATTIC WITHIN 25FT OF THE MECHANICAL EQUIPMENT. CONTRACTOR SHALL PROVIDE EXACT LOCATION. AIR HANDLING UNITS SHOWN ARE LOCATED IN ATTIC.
- PROVIDE RECEPTACLES IN THE ATTIC WITHIN 25FT OF THE MECHANICAL EQUIPMENT. CONTRACTOR SHALL PROVIDE EXACT LOCATION. AIR HANDLING UNITS SHOWN ARE LOCATED IN ATTIC.
- COORDINATE WITH FIRE MARSHAL AND OWNER FOR THE LOCATION OF THE RECESSED FIRE ALARM ANNUCIATOR.
- TIMELOCK AND CONDUCTOR FOR EXTERIOR LIGHTING CONTROLS. REFER TO RISER ON E3.1.



THOMPSON EHLE CO.
 50 TECHNOLOGY PKWY
 PEACHTREE CORNERS, GA 30092
 TEL 404.266.1400
 TEC #22021