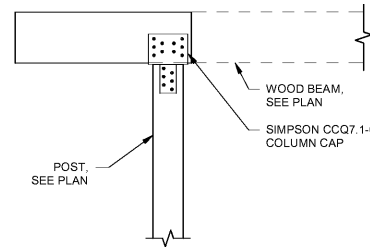
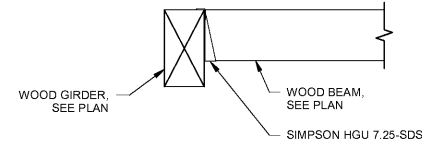


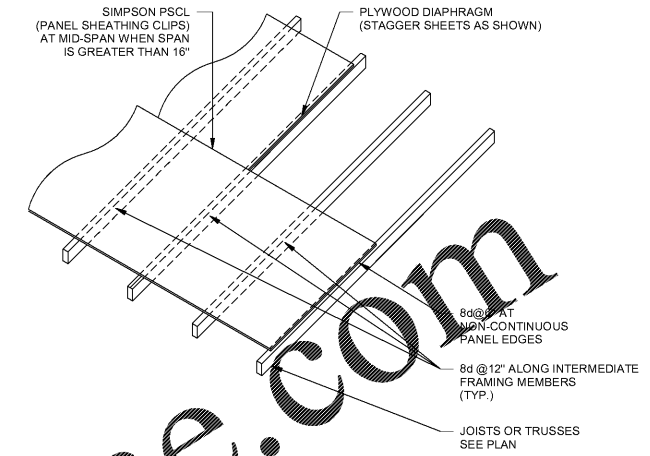
12 TYPICAL ROOF TRUSS ATTACHMENT AT INTERIOR WALL
S6.1 3/4" = 1'-0"



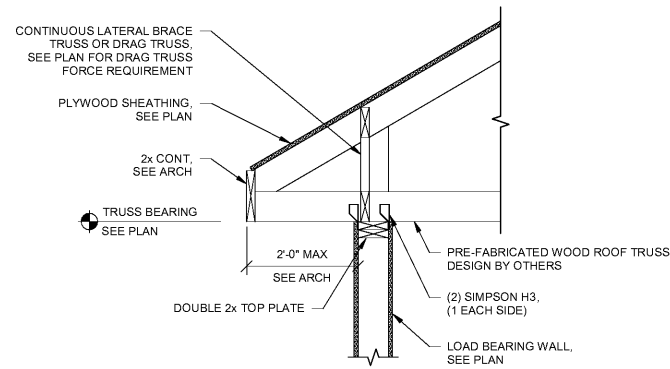
9 TYPICAL LVL BEAM TO POST CONNECTION DETAIL
S6.1 3/4" = 1'-0"



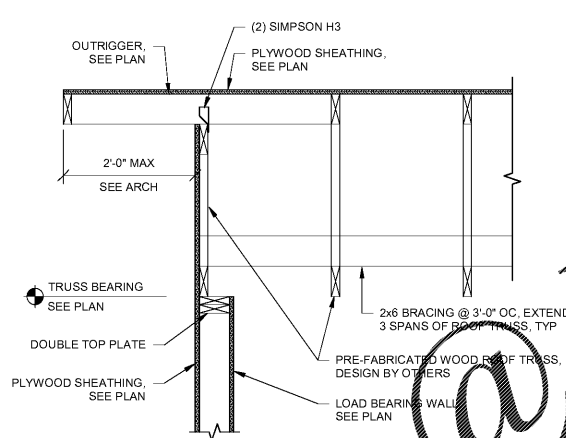
6 TYPICAL BEAM TO LVL GIRDER CONNECTION DETAIL
S6.1 3/4" = 1'-0"



3 DIAPHRAGM DETAIL
S6.1 3/4" = 1'-0"



11 TYPICAL ROOF TRUSS ATTACHMENT AT EXTERIOR WALL
S6.1 3/4" = 1'-0"

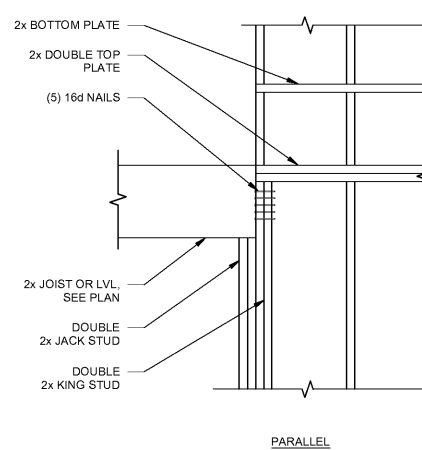


8 TYPICAL ROOF TRUSS ATTACHMENT AT EXTERIOR WALL
S6.1 3/4" = 1'-0"

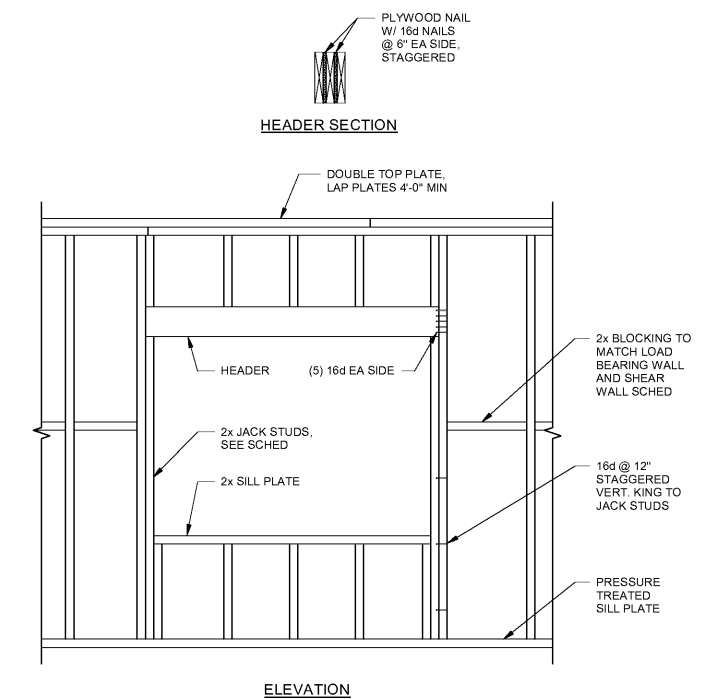
TOP FLANGE HANGER SCHEDULE			
POST	BEAM SIZE	TOP FLANGE HANGER	COMMENT
6x6	(2) 2x10	SIMPSON HUC 210-2	
	(3) 2x12	SIMPSON HUC 212-3	(22) 16d x 3 1/2" NAILS TO POST (10) 0. 16d x 3 1/2" NAILS TO BEAM

WOOD HEADER SCHEDULE				
LEVEL	OPENING SIZE	HEADER SIZE	# OF JACK STUDS	# OF KING STUDS
GROUND TO ROOF	LESS THAN 4'-0"	(3) 2x8	1	1
	4'-0" - 6'-0"	(3) 2x10	2	2
	6'-0" - 8'-0"	CONSULT ENG	2	2
	GREATER THAN 8'-0"	CONSULT ENG	CONSULT ENG	CONSULT ENG

5 TYPICAL BEAM TO POST CONNECTION DETAIL
S6.1 3/4" = 1'-0"



PERPENDICULAR PARALLEL

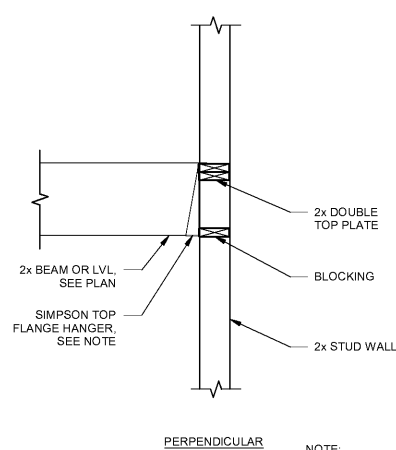


1 TYPICAL LOAD BEARING WALL HEADER SECTION AND SCHEDULE
S6.1 3/4" = 1'-0"

COLUMN MEMBER	QUANTITY	FASTENERS	END DISTANCE	EDGE DISTANCE	VERT SPACING
2x4	(2)	10d NAIL	2 1/2"	1"	6"
	(3)	30d NAILS	3 1/2"	1 1/2"	8"
	(4) OR (5)	1/2" ø BOLTS	4 1/2"	2"	8"
2x6	(2)	10d NAIL	2 1/2"	1"	6"
	(3)	30d NAILS	3 1/2"	1 1/2"	8"
	(4) OR (5)	1/2" ø BOLTS	4 1/2"	2"	8"

10 BUILT-UP COLUMN
S6.1 3/4" = 1'-0"

7 BEAM BEARING AT LOAD-BEARING WALL
S6.1 3/4" = 1'-0"

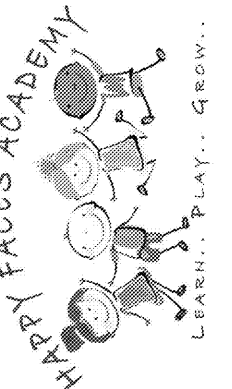


NOTE: ATTACH HANGER TO RIM JOIST OR BLOCKING AT SIM.

JOB NUMBER: 19221
CHECKED BY: Checker

PLANNING
ARCHITECTURE
INTERIORS

CALBERT
DESIGN GROUP



PROJECT LOCATION:
2865 WEBB ROAD
MILTON, GA 30004

REVISIONS		
NO	DATE	DESCRIPTION

WOOD FRAMING DETAILS

S6.1

DATE 01/27/21

FORESITE
group

Foresite Group, Inc.
3740 Davinci Ct.
Suite 100
Peachtree Corners, GA 30092

www.fg-inc.net
770.368.1399
770.368.1944