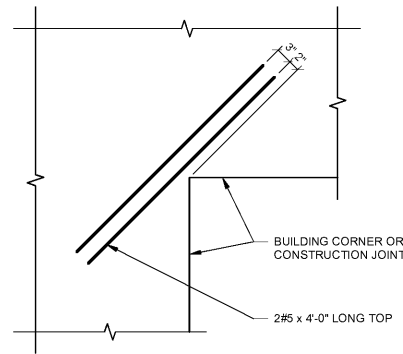
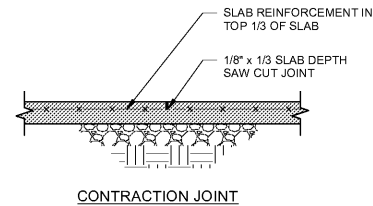


NOTE  
1. COORDINATE ISOLATION JOINT SIZE WITH BASEPLATE SCHEDULE, SEE 9/S-501.

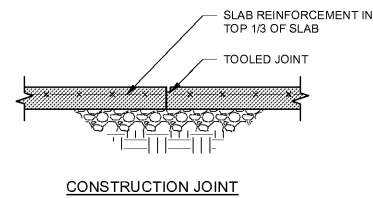
12 TYPICAL ISOLATION JOINT AT STEEL COLUMN  
S3.1 3/4" = 1'-0"



9 TYPICAL REINFORCEMENT AT SLAB RE-ENTRANT CORNER  
S3.1 3/4" = 1'-0"



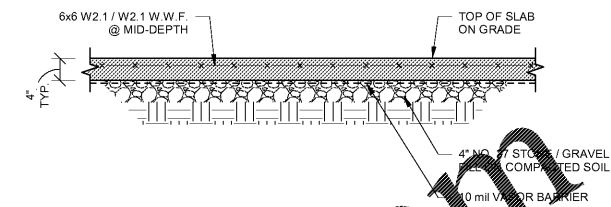
CONTRACTION JOINT



CONSTRUCTION JOINT

NOTE: SAW CUT OR DISCONTINUE REINFORCEMENT AT CONTRACTION JOINT

6 TYPICAL GRADE SUPPORTED SLAB AT JOINTS  
S3.1 3/4" = 1'-0"

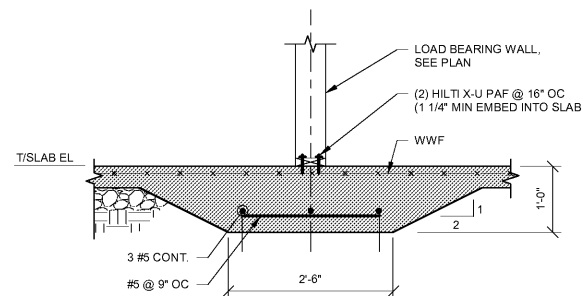


NOTE:  
1. W.W.F. TO BE SPLICED BY OVERLAPPING ONE FULL PANEL (2'), AND WIRE TIED 4 TIMES PER SHEET

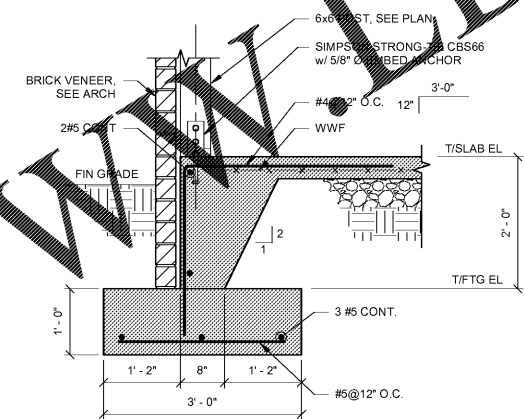
3 TYPICAL SLAB DETAIL  
S3.1 3/4" = 1'-0"

| HEIGHT        | BASE  |       |    |        |       | REINFORCING BARS |        |        |        |        |
|---------------|-------|-------|----|--------|-------|------------------|--------|--------|--------|--------|
|               | W     | A     | B  | C      | D     | DOWELS           | M      | TEMP   | P      | L      |
| < 3'-0"       | 3'-0" | 1'-0" | 8" | 1'-4"  | 1'-4" | #6@12"           | #6@12" | #4@12" | #4@12" | #4@12" |
| 3'-0" - 5'-0" | 4'-6" | 1'-0" | 8" | 2'-10" | 1'-4" | #6@12"           | #6@12" | #4@12" | #4@12" | #4@12" |
| 5'-0" - 7'-0" | 6'-6" | 1'-0" | 8" | 4'-10" | 1'-4" | #6@12"           | #6@12" | #4@12" | #4@12" | #4@12" |
| 7'-0" - 9'-0" | 8'-0" | 1'-0" | 8" | 6'-4"  | 1'-4" | #6@9"            | #6@9"  | #4@12" | #4@9"  | #4@12" |

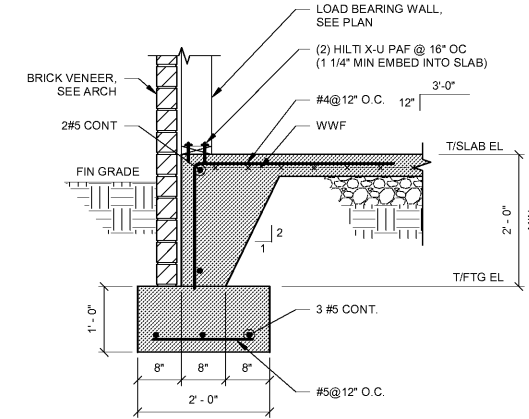
NOTE: FOR INFORMATION NOT SHOWN, SEE ARCH AND CIVIL



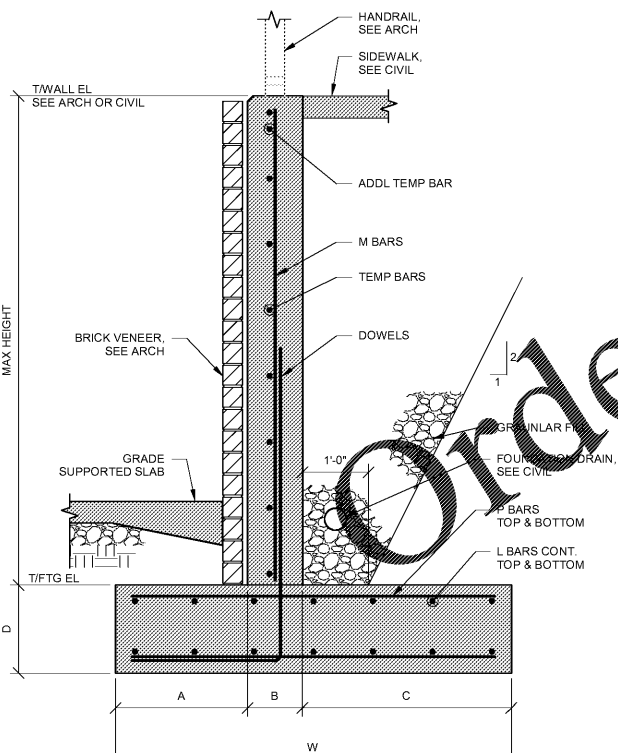
8 TYPICAL THICKENED SLAB AT INTERIOR WALLS  
S3.1 3/4" = 1'-0"



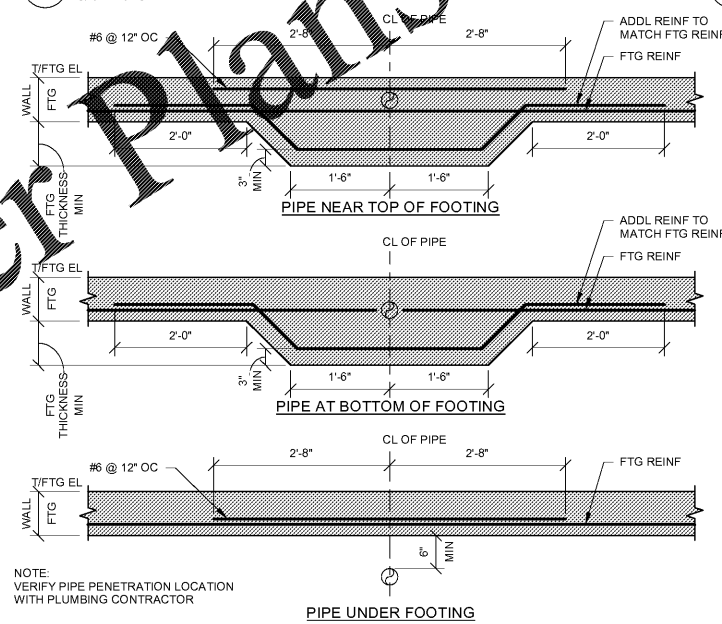
5 TYPICAL TURNDOWN SLAB ON FOOTING AT FACADE COLUMN  
S3.1 3/4" = 1'-0"



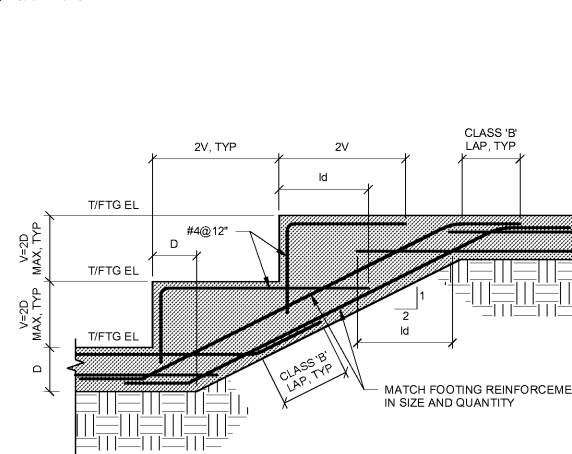
2 TYPICAL TURNDOWN SLAB ON FOOTING AT EXTERIOR WALL  
S3.1 3/4" = 1'-0"



10 TYPICAL FOUNDATION WALL  
S3.1 3/4" = 1'-0"



7 TYPICAL THICKENED FOOTING AT UNDERGROUND PIPING  
S3.1 3/4" = 1'-0"



NOTE: IF BARS CANNOT EXTEND UPTO DEVELOPMENT LENGTH, PROVIDE STANDARD HOOK

4 TYPICAL STEPPED FOOTING TOP AND BOTTOM REINFORCEMENT  
S3.1 3/4" = 1'-0"

| FOOTING SCHEDULE |                     |                        |         |
|------------------|---------------------|------------------------|---------|
| MARK             | SIZE (WxLxT)        | REINF                  | REMARKS |
| F4.0             | 4'-0" x 4'-0" x 12" | 4 #5 EA WAY, TOP & BOT | -       |
| F3.0             | 3'-0" x 3'-0" x 12" | 3 #5 EA WAY, BOT       | -       |

1 FOOTING SCHEDULE  
S3.1 3/4" = 1'-0"

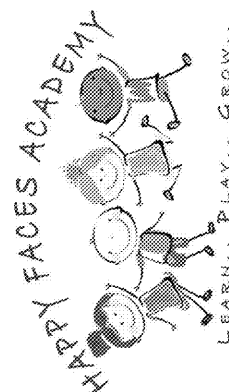
**FORESITE**  
group

Foresite Group, Inc. | www.fg-inc.net  
3740 Davinci Ct. | 770.368.1399  
Suite 100 | 770.368.1944  
Peachtree Corners, GA 30092

JOB NUMBER: 19221  
CHECKED BY: Checker

PLANNING  
ARCHITECTURE  
INTERIORS

**CALBERT**  
DESIGN GROUP



PROJECT LOCATION:  
2865 WEBB ROAD  
MILTON, GA 30004

| REVISIONS |       |              |
|-----------|-------|--------------|
| NO        | DATE: | DESCRIPTION: |
|           |       |              |
|           |       |              |
|           |       |              |
|           |       |              |
|           |       |              |
|           |       |              |
|           |       |              |

FOUNDATION DETAILS

**S3.1**

DATE 01/27/21