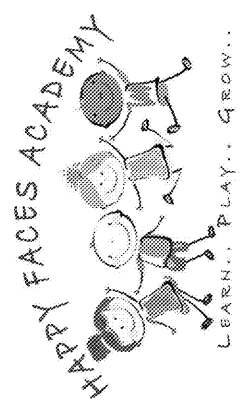


- ROOF KEY NOTES:**
- ALL ROOF MOUNTED EQUIPMENT WITH CURBS SHALL HAVE TAPERED INSULATION CRICKETS INSTALLED TO MAINTAIN POSITIVE SLOPE TO ROOF GUTTERS.
 - ALL ROOF MOUNTED EQUIPMENT SHALL BE LOCATED ON REAR SIDE OF BUILDING AND BE PAINTED TO MATCH ROOFING SHINGLES.
 - HATCHED AREA IS DECKED CATWALK. SEE BUILDING SECTION 1/A2.2
 - ATTIC ACCESS PULL DOWN HATCH WITH 25.5"x63" CLEAR OPENING. COORDINATE EXACT LOCATION WITH ROOF TRUSSES. DOOR AND LADDER DETAILS. SEE 9/A1.6.
 - ATTIC DRAFT STOP. 1/2" GYP. BD. SMOKE STOP ON ONE SIDE OF ROOF TRUSS. TAPED ONLY. MAXIMUM AREA BETWEEN DRAFT STOPS IS 3,000 SQ. FT.
 - PROVIDE 36"x48" DRAFT STOP ACCESS DOOR AT CATWALK. MUST BE SELF CLOSING. SEE DETAILING AND ALLOW FOR ACCESS FROM BOTH SIDES OF DOOR. SEE DETAIL 5/A1.6.
 - CONNECT ALL ROOF DOWNSPOUTS WITHIN FENCED AREAS TO UNDERGROUND SEWER WATER DRAINAGE SYSTEM. SEE CIVIL DRAWINGS.
 - USE SA-1 CEDAR TRUSS. SEE STRUCTURAL.
 - EXPOSED DECKING RAFTER TAILS TO MATCH CEDAR TRUSS PROFILE. SEE STRUCTURAL. TYP. OF 4.
 - ROUND DOWN CEDAR BEAM. SEE STRUCTURAL.

JOB NUMBER: 19221
CHECKED BY: RKC

PLANNING
ARCHITECTURE
INTERIORS
CALBERT
DESIGN GROUP
INFO@CALBERTDESIGN.COM | 815.396.1744 | 2955 CHEVY CHASE ST. SUITE 600, KENNESAW, GA 30144

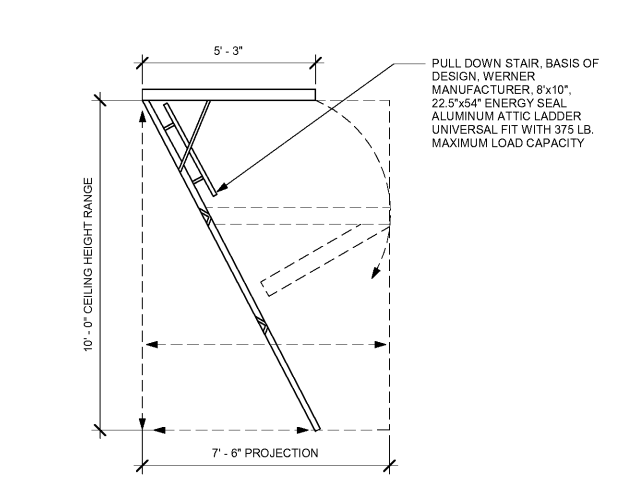
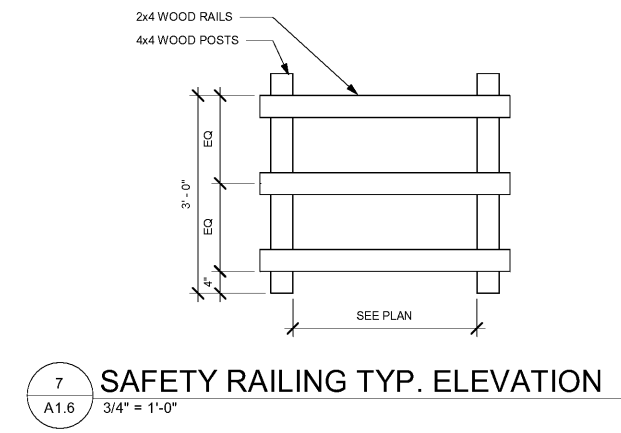
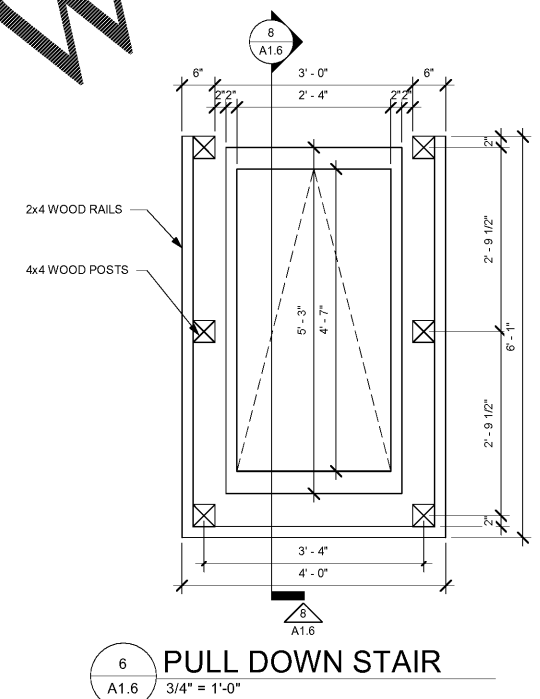
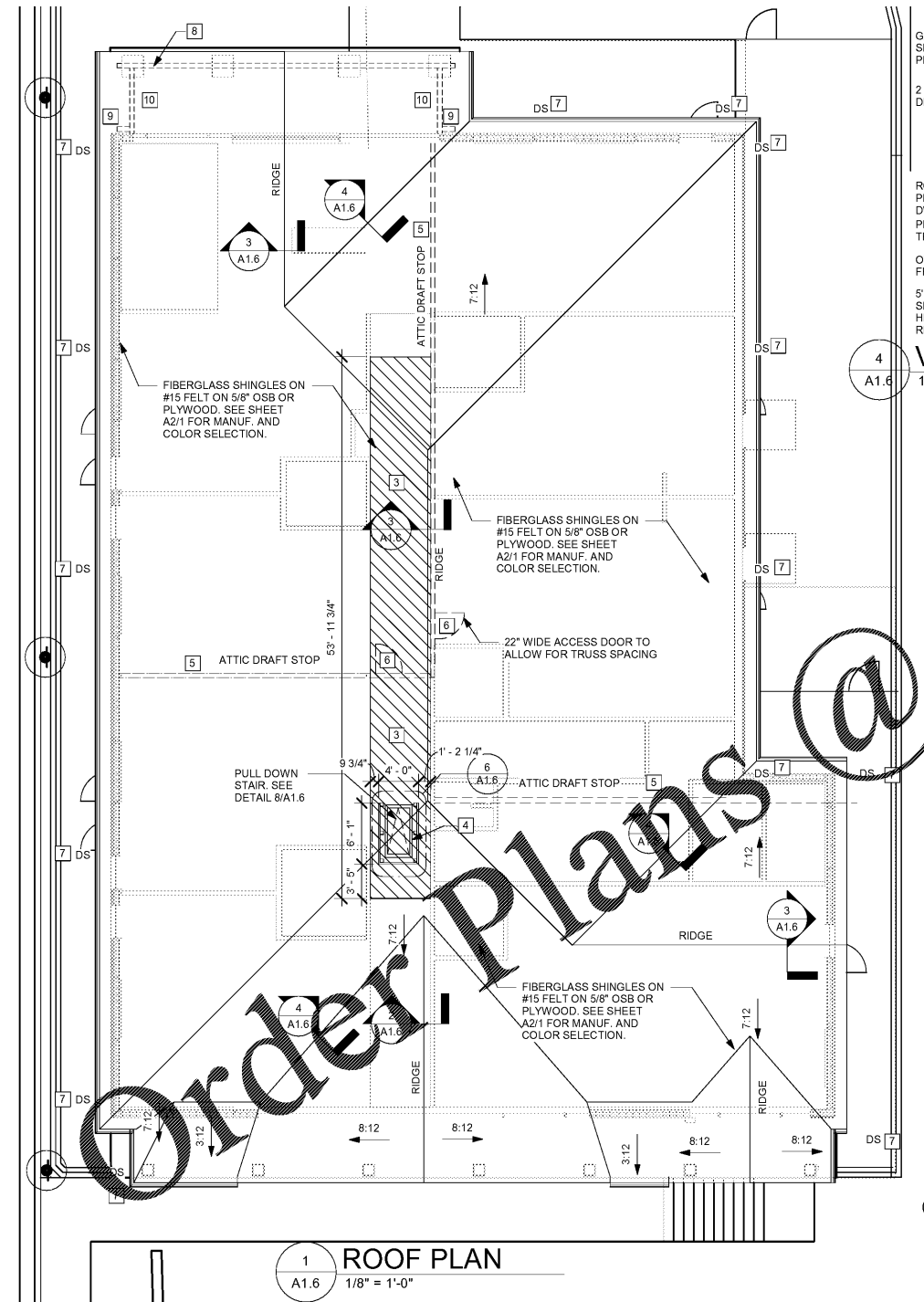
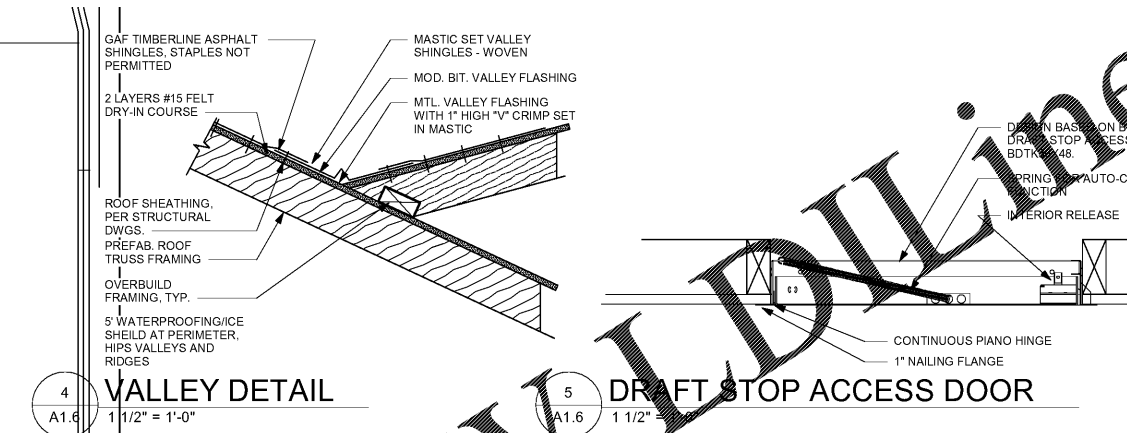
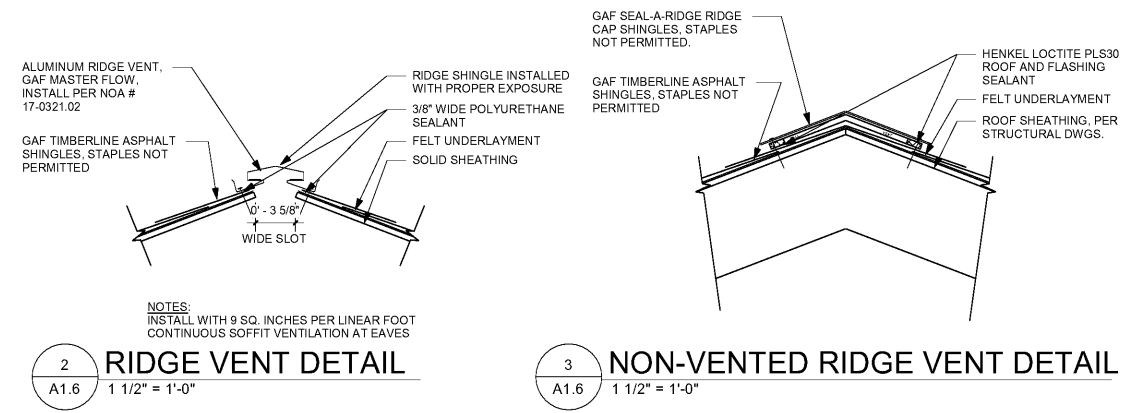


PROJECT LOCATION:
2865 WEBB ROAD
MILTON, GA 30004

REVISIONS

NO	DATE:	DESCRIPTION:

ROOF PLAN
A1.6
DATE



Order Plans @

WWW.IDLINE.COM