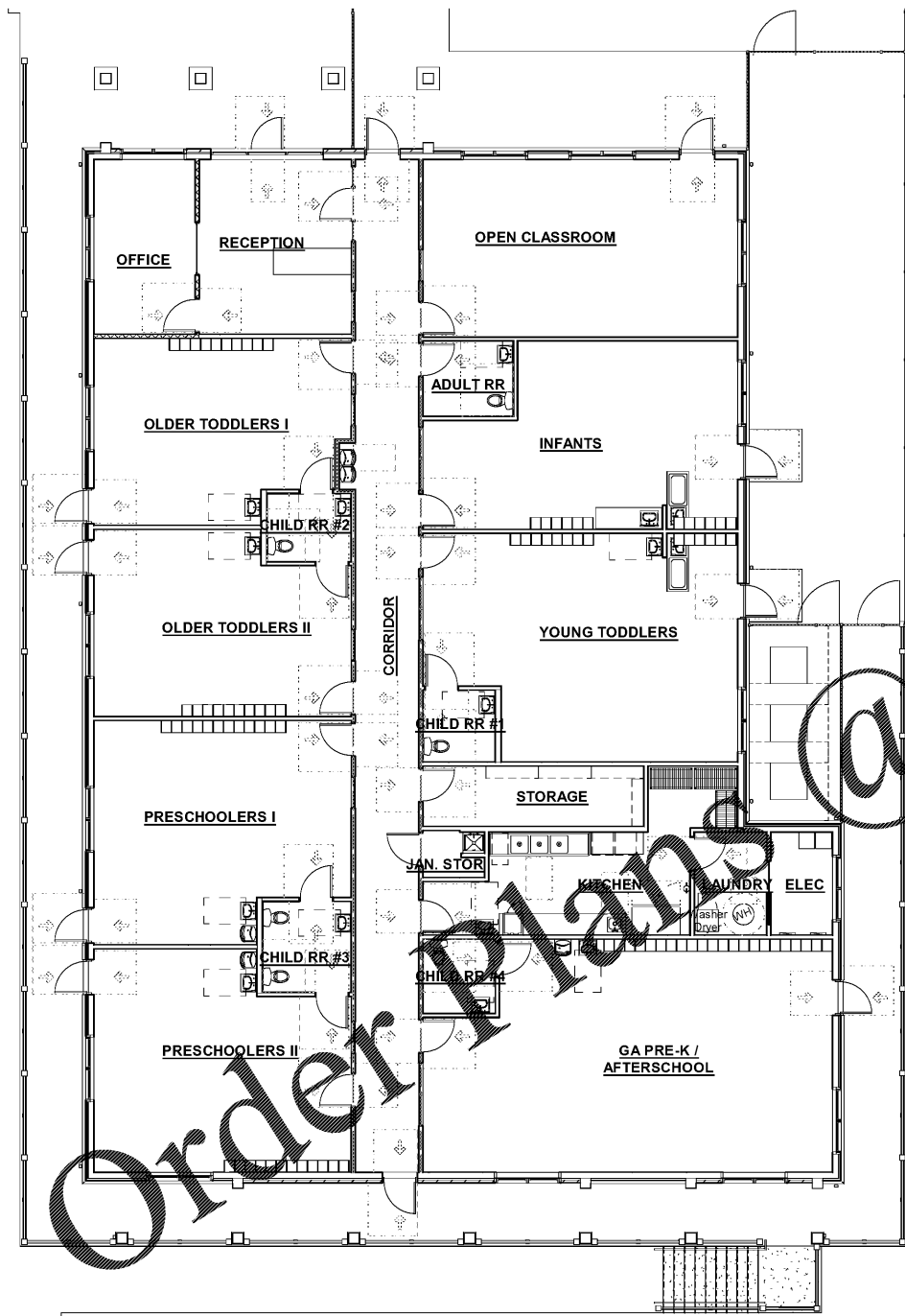


SIGN LOCATION, 5'-0" A.F.F. TO SIGN CENTER, 2" GAP FROM DOOR

2 TYPICAL INTERIOR SIGN LOCATION  
A1.3 3/8" = 1'-0"



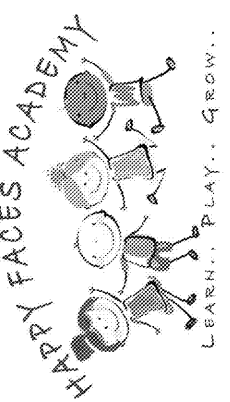
1 CASEWORK AND EQUIPMENT PLAN  
A1.3 1/8" = 1'-0"

SHELVING, CUBBIES AND CABINETS					
15	N_Office Shelves: N_Office Shelves				
B10	10 - PM_Changing Table: B10 - PM_Changing Table				
B19	06 - CDG_Counter Top: B19 - Staff Countertop 24"d				

JOB NUMBER: 19221  
CHECKED BY: RKC

PLANNING  
ARCHITECTURE  
INTERIORS

CALBERT  
DESIGN GROUP



PROJECT LOCATION:  
2865 WEBB ROAD  
MILTON, GA 30004

REVISIONS		
NO	DATE:	DESCRIPTION:

CASEWORK AND  
EQUIPMENT PLAN

A1.3

DATE

WWW.LDILine.com

- TACTILE SIGNAGE NOTES:**
- CHARACTER ON SIGNS SHALL BE RAISED 1/32 INCH MINIMUM AND SHALL BE SANS SERI UPPERCASE CHARACTERS ACCOMPANIED BY CONTRACTED (GRADE 2) BRAILLE.
  - RAISED CHARACTERS SHALL BE A MINIMUM OF 5/8 INCH AND A MAXIMUM OF 2 INCHES HIGH.
  - PICTORIAL SYMBOL SIGNS SHALL BE ACCOMPANIED BY THE VERBAL DESCRIPTION PLACED DIRECTLY BELOW THE PICTOGRAM. THE OUTSIDE DIMENSION OF THE PICTOGRAM FIELD SHALL BE A MINIMUM OF 6 INCHES IN HEIGHT.
  - CHARACTERS AND BRAILLE SHALL BE IN A HORIZONTAL FORMAT. BRAILLE SHALL BE PLACED A MINIMUM OF 3/8 INCH AND A MAXIMUM OF 1/2 INCH DIRECTLY BELOW THE TACTILE CHARACTERS; FLUSH LEFT OF CENTERED.
  - RAISED CHARACTERS ON SIGNS SHALL BE SELECTED FROM FONTS WHERE THE WIDTH OF THE UPPERCASE LETTER "O" IS 55% MINIMUM AND 110% MAXIMUM OF THE HEIGHT TO THE UPPERCASE LETTER "I". STROKE THICKNESS OF THE UPPERCASE LETTER "I" SHALL BE 15% MAXIMUM OF THE HEIGHT OF THE CHARACTER.
  - BRAILLE DOTS SHALL BE 1/10 INCH ON CENTER IN EACH CELL WITH 2/10 INCH SPACE BETWEEN CELLS, MEASURED FROM THE SECOND COLUMN OF DOTS IN THE FIRST CELL TO THE FIRST COLUMN OF DOTS IN THE SECOND CELL.
  - BRAILLE DOTS SHALL BE RAISED A MINIMUM OF 1/40 INCH ABOVE THE BACKGROUND.
  - BRAILLE DOTS SHALL BE DOMED OR ROUNDED.
  - GC TO PROVIDE AND INSTALL ALL TACTILE SIGNS AT ALL ROOMS AND EXIT LOCATIONS.
  - GC TO VERIFY FINAL CLASSROOM NUMBERS W/ TENANT PRIOR TO ORDERING SIGN PACKAGE.

- EQUIPMENT KEY NOTES:**
- |   |  |
|---|--|
| 1 UNDERCOUNTER REFRIGERATOR - HOSHIZAKI CRMR27                        | 19 STAINLESS STEEL SINK - ADVANCE 93-23-60-24RL (24"x115") W. T&S B-0231 FAUCET                                |
| 2 8' WHITE BOARD, MOUNT BOTTOM EDGE AT 2'-6" A.F.F.                   | 20 CONVECTION STEAMER - VULCAN C24EA3-BSC ON 34YSGL EQUIPMENT STAND W/3" CASTERS                               |
| 3A 4 CUBBIE WALL LOCKER. SEE ELEVATION 5/A5.2                         | 21 STAINLESS STEEL TABLE - EAGLE T2472SEB-BS (6'L) W/ 16"x20"x14" INTERGRAL SINK W/ (1) SS 20"x20" DRAWERS     |
| 3B 4 CUBBIE WALL LOCKER W/ CAB. ABOVE. SEE ELEVATION 10/A5.2          | 22 STAINLESS STEEL TABLE - EAGLE T2472SEB-BS (6'L)   |
| 4 INFANT CUBBIES. SEE ELEVATION 10/A5.1                               | 23 WIRE WALL SHELVING - (5)FF2448G, (4)FG074G (5 SHELVES), 74PS POSTS  |
| 5 3'-6"H WALL WITH WOOD CAP. SEE DETAIL 10/A5.3                       | 24 WIRE WALL SHELVING - FOCUS FOOD SERVICE FF1236C (12"x36"), SEE ELEVATIONS A5.4                              |
| 6 6" D. SEMI-RECESSED WALL CABINET                                    | 25 STAINLESS STEEL TABLE - EAGLE GROUP T3648TB-BS (5'L)  |
| 7A STAFF LOUNGE - SEE ELEVATION 11/A5.1                               | 26 RECEPTION DESK - SEE SHEET A5.1   |
| 7B STAFF LOUNGE - SEE ELEVATION 10/A5.1                               | 27 HAND WASH SINK - EAGLE GROUP HSA-10-F-1X. SEE PLUMBING DRAWINGS   |
| 8 24" x 24" MOP SINK. SEE 4/A5.4                                      | 28 STAINLESS STEEL TABLE - EAGLE MS3636 (36"Wx24"Lx35"H)   |
| 9 WALL HUNG PAPER TOWEL & SOAP DISPENSER. SEE DETAIL 14/A6.1          | 29 RESIDENTIAL LARGE CAPACITY WASHER & ELECTRIC DRYER  |
| 10 TABLETOP MICROWAVE - AMANA RC22S2                                  | 30 TOILET PARTITIONS. SEE SHEET A6.1   |
| 11 MOP & BROOM HOLDER. SEE DETAIL 5/A5.4                              | 31 WARMING CABINET - VULCAN VP18. SEE SHEET A5.4   |
| 12 CHANGING TABLE W/ ASSEMBLY AND WALL CABINETS. SEE ELEVATION 5/A6.2 | 32 WARMING CABINET - F.W.E., SEE SHEET A5.4  |
| 13 PREP TABLE & WALL CABINETS. SEE INTERIOR ELEVATIONS.               | 33 TACTILE WALL SIGN. SEE SIGNAGE DETAILS FOR MOUNTING LOCATION AND SIGNAGE SCHEDULE FOR NAMES AND QUANTITIES. |
| 14 CLASSROOM UNIT & WALL CABINETS. SEE INTERIOR ELEVATIONS            | 34 WIRE WALL SHELVING - (5)FF2442G, (4)FG074G (5 SHELVES), 74PS POSTS  |
| 15 ADJUSTABLE STORAGE SHELVING, 2 TIERS H                             |  |
| 16 COMMERCIAL REFRIGERATOR - HOSHIZAKI MODEL CR2S-FS                  |  |
| 17 COMMERCIAL FREEZER - HOSHIZAKI MODEL CF2S-FS                       |  |
| 18 COMMERCIAL GLASS WASHER, HOBART MODEL NO. LXEGH-2                  |  |

**OWNER SCOPE OF WORK**  
OWNER TO PROVIDE AND COORDINATE THE DESIGN AND INSTALLATION OF TELEPHONE COMMUNICATION, DATA SYSTEM, BURGLAR ALARM SYSTEM AND WINDOW BLINDS.