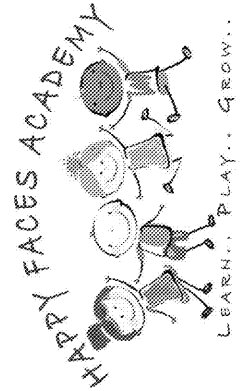


JOB NUMBER: 19221  
 CHECKED BY: RKC

PLANNING  
 ARCHITECTURE  
 INTERIORS

**CALBERT**  
 DESIGN GROUP



PROJECT LOCATION:  
 2865 WEBB ROAD  
 MILTON, GA 30004

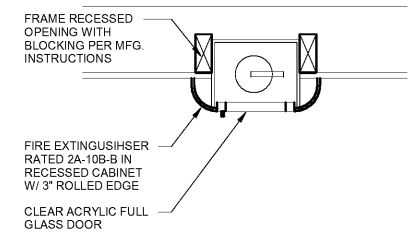
REVISIONS

NO	DATE	DESCRIPTION

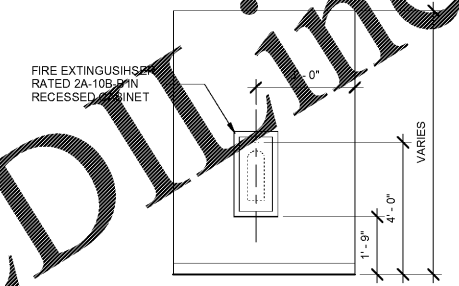
CHILDCARE LICENSING PLAN

**A1.2**

DATE 01/23/20



2 RECESSED FIRE EXTINGUISHER  
 A1.2 1 1/2" = 1'-0"



3 TYP. FIRE EXT. CABINET  
 A1.2 3/8" = 1'-0"

LIFESAFTY/EGRESS LEGEND

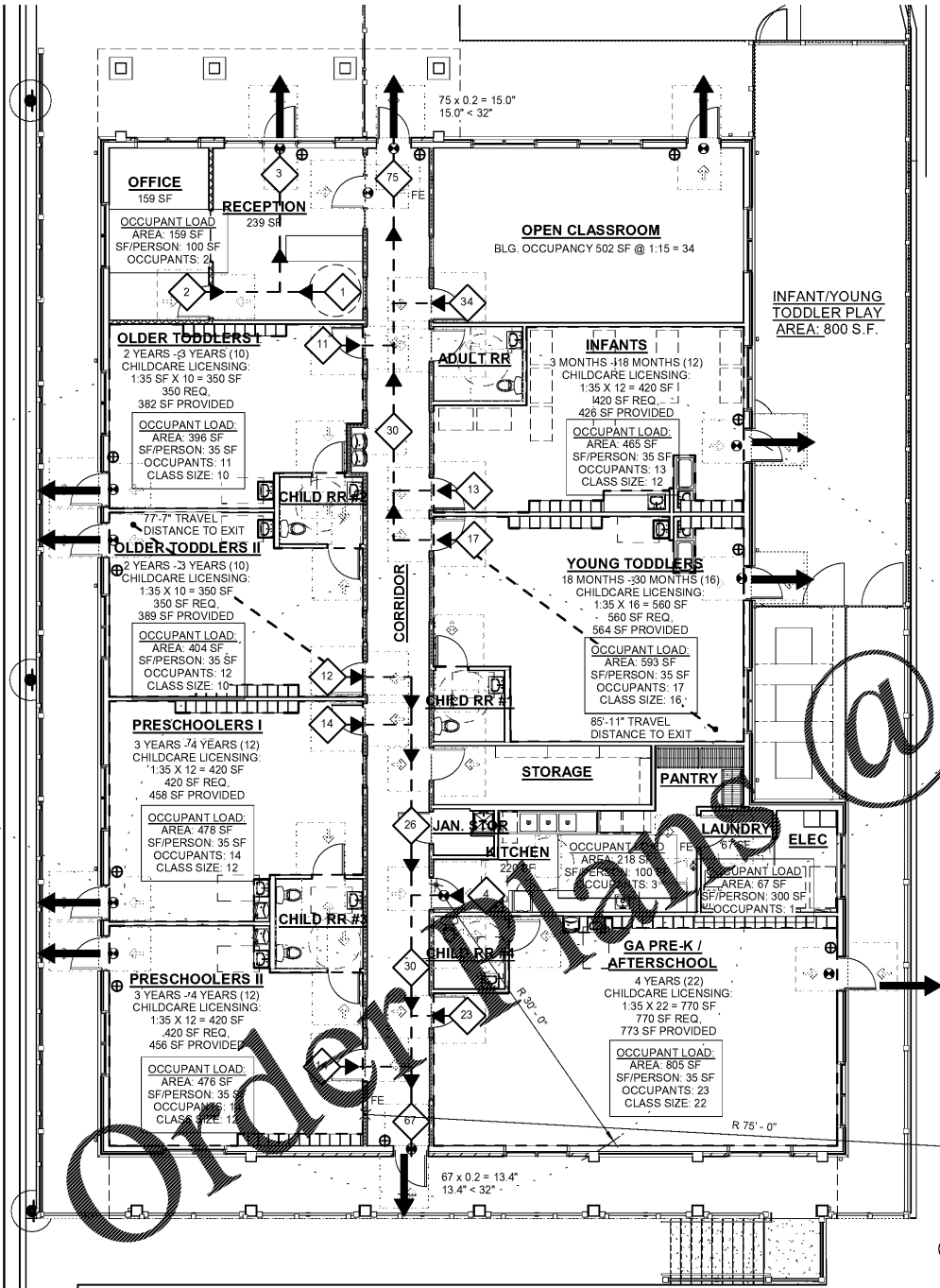
⊕	EMERGENCY/EXIT LIGHT
⊕	FIRE EXTINGUISHER, SEE DETAILS 2,3/A1.2
⊕	EXIT TACTILE SIGNAGE, SEE TACTILE SIGN NOTES ON SHEET A1.3

OCCUPANCY CALCULATIONS

FUNCTION	RATIO	OCCUPANTS
DAYCARE:	1:35	104
GYM:	1:15	34
BUSINESS:	1:100	2
KITCHEN/BREAK:	1:100	3
STORAGE:	1:300	1
<b>TOTAL OCCUPANTS:</b>		<b>144</b>

BUILDING PROGRAM

Room	Ages	SF per Child	Georgia State Ratio	Max Group Size	Staff Ratio	Proposed Room Capacity	Staff Req'd	Req'd Area
Infants	3 months - 18 months	35	1:6	none	1:6	12	2	420
Young Toddlers	18 months - 30 months	35	1:8	none	1:8	16	2	560
Older Toddlers	2 years - 3 years	35	1:10	none	1:10	10	1	350
Preschoolers	3 years - 4 years	35	1:15	none	1:15	12	1	420
GA Pre-K	4 years	35	1:18	none	1:18	22	2	770
<b>TOTAL</b>						<b>94</b>	<b>10</b>	<b>3290</b>



1 CHILDCARE LICENSING PLAN  
 A1.2 1/8" = 1'-0" AREA: 6,342 S.F.

WWW.LDILINE.COM