

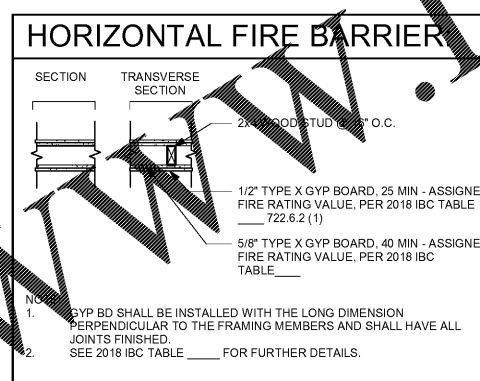
ABBREVIATIONS:			
AC	AIR CONDITIONING	MAS	MASONRY
AFF	ABOVE FINISH FLOOR	MAX	MAXIMUM
AHU	AIR HANDLING UNIT	MECH	MECHANICAL
AL	ALUMINUM	MFGR/MFR	MANUFACTURER
ASPH	ASPHALT	MIN	MINIMUM
AT	ALUMINUM THRESHOLD	MO	MASONRY OPENING
BD	BOARD	MR	MIRROR/MOISTURE RESISTANT
BLKT	BLANKET	MT	MARBLE THRESHOLD
BT	BRASS THRESHOLD	MTL	METAL
CJ	CONTROL JOINT	N/	NOT APPLICABLE
CLG	CEILING	NIC	NOT IN CONTRACT
CL	CENTER LINE	NOM	NOMINAL
CMU	CONCRETE MASONRY UNIT	NTS	NOT TO SCALE
COL	COLUMN	OC	ON CENTER
CONC	CONCRETE	OPP	OPPOSITE
CONT	CONTINUOUS	PLBG	PLUMBING
CPT	CARPET	PLYWD	PLYWOOD
CT	CERAMIC TILE	PREFAB	PREFABRICATED
CL	CENTERLINE	PSP	POUNDS PER SQUARE FOOT
DBL	DOUBLE	PT	PAINT/PRESSURE TREATED
DF	DRINKING FOUNTAIN	QT	QUANTITY
DIA	DIAMETER	R	RISER/RADIUS
DIM	DIMENSION	REBAR	REINFORCING BAR
DN	DOWN	REF	REINFORCE
DS	DOWN SPOUT	REQ'D	REQUIRED
EA	EACH	RO	ROUGH OPENING
EJ	EXPANSION JOINT	SO	SPLASHBLOCK
ELEC	ELECTRICAL	SIM	SIMILAR
ELEV/EL	ELEVATION	SPEC	SPECIFICATION
EO	EQUAL	SS	STAINLESS STEEL
EXIST	EXISTING	STL	STEEL
FD	FLOOR DRAIN	STOR	STORAGE
FE	FIRE EXTINGUISHER	SUSP	SUSPENDED
FEC	FIRE EXTINGUISHER CABINET	TELE	TELEPHONE
FF	FINISH FLOOR	TEMP	TEMPERED
FND	FOUNDATION	TPD	TOILET PAPER DISPENSER
FR	FIRE RETED	TEL	TELEPHONE
GALV	GALVANIZED	TS	TRANSITION STRIP
GYPBD	GYPSON WALL BOARD	TYP	TYPICAL
HC	HANDICAP	UNLESS NOTED OTHERWISE	
HDW	HARDWARE	VCT	VINYL COMPOSITION TILE
HM	HOLLOW METAL	VT	VINYL THRESHOLD
HVAC	HEATING, VENTILATION & AIR CONDITIONING	WC	WATER CLOSET
INFO	INFORMATION	WD	WOOD
INSUL	INSULATION	WP	WATERPROOF
LAC	LAY-IN ACOUSTICAL CEILING	WWF	WELDED WIRE FABRIC
		W/	WITH

SYMBOLS / LEGEND:	
	ELEVATION NUMBER
	SHEET NUMBER
	WALL SECTION NUMBER, BUILDING SECTION LETTER
	DETAIL NUMBER
	KEY NOTE NUMBER
	WINDOW NUMBER
	REVISION NUMBER
	DOOR NUMBER
	DOOR THRESHOLD
	SPOT ELEVATION LEVEL NAME
	NEW COLUMN GRID NUMBER OR LETTER

FOR CONSTRUCTION:

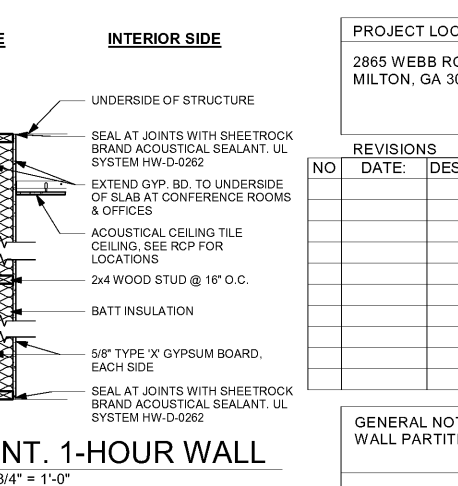
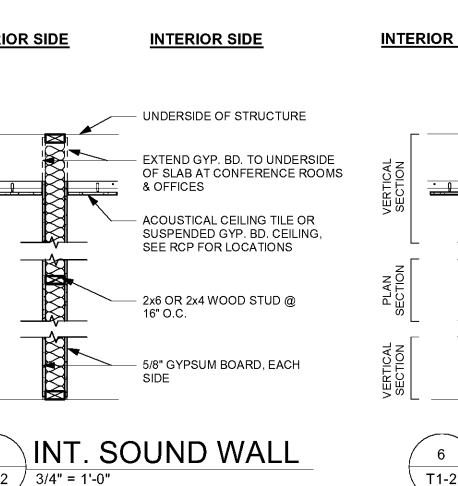
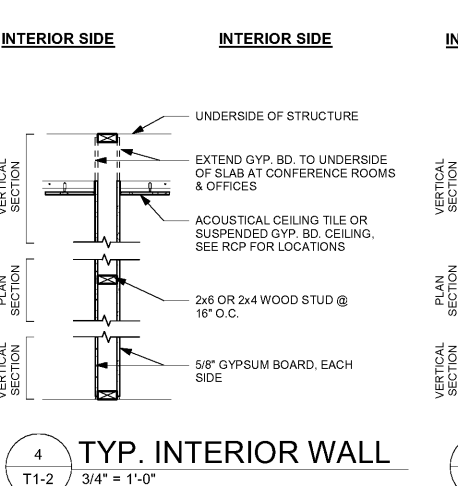
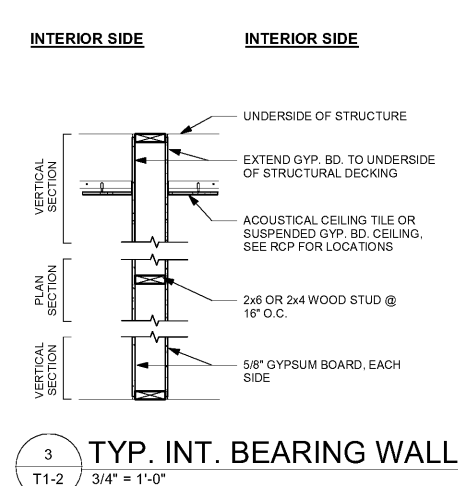
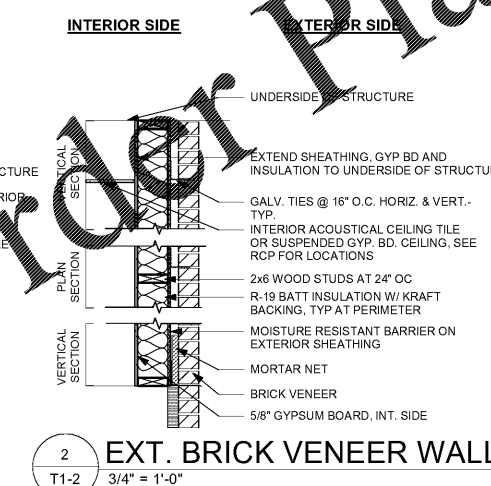
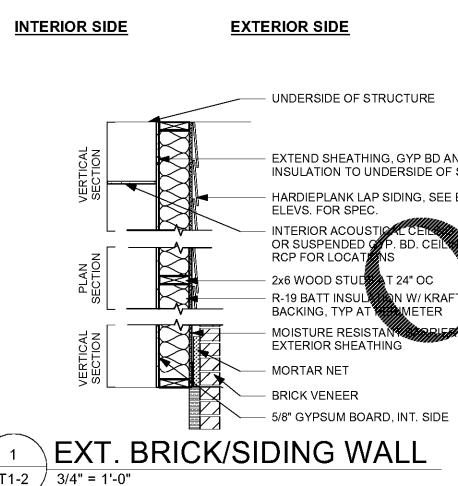
THESE DRAWINGS SHOW THE LOCATION AND SPECIFICATIONS FOR THE MINIMUM REQUIRED DESIGN. THESE DOCUMENTS SHALL NOT BE REPRODUCED OR USED BY THE OWNER OR BY OTHERS, EXCEPT WITH WRITTEN APPROVAL FROM NOBEL LEARNING COMMUNITIES, INC.

- GENERAL NOTES:**
- THE CONTRACTOR SHALL EXAMINE THE DRAWINGS AND SHALL NOTIFY THE ARCHITECT OF ANY DISCREPANCIES IN ELEVATIONS, DIMENSIONS, AND SITE CONDITIONS BEFORE PROCEEDING WITH ANY WORK. OMISSIONS AND CONFLICTS BETWEEN VARIOUS ELEMENTS OF THE DRAWINGS AND SPECIFICATIONS SHALL BE RESOLVED WITH THE ENGINEER/ARCHITECT PRIOR TO THE START OF WORK.
 - IF THE EXISTING FIELD CONDITIONS DO NOT PERMIT THE INSTALLATION OF THE WORK IN ACCORDANCE WITH THE DETAILS SHOWN, THE CONTRACTOR SHALL NOTIFY THE ARCHITECT/ENGINEER IMMEDIATELY AND PROVIDE INFORMATION OF EXISTING CONDITIONS. FINAL INSTALLATION SHALL BE IN ACCORDANCE WITH THE WRITTEN INSTRUCTION OF THE ARCHITECT/ENGINEER.
 - THE CONTRACTOR MUST HAVE THE ARCHITECT'S DIRECTION BEFORE PROCEEDING WITH ANY WORK WHICH DEVIATES FROM THE CONTRACT DOCUMENTS.
 - THE DRAWINGS AND SPECIFICATIONS REPRESENT THE COMPLETED STRUCTURE. THEY DO NOT INDICATE THE METHOD OF CONSTRUCTION. THE CONTRACTOR SHALL PROVIDE ALL MEASURES AND MEANS NECESSARY TO PROTECT WORKS AND THE STRUCTURE DURING CONSTRUCTION. SUCH MEASURES SHALL INCLUDE, BUT NOT BE LIMITED TO, BRACING, SHORING, ETC. OBSERVATION VISITS BY THE ARCHITECT OR ENGINEER DO NOT INCLUDE INSPECTION OF THE ITEMS.
 - NOTES AND DETAILS ON THE DRAWINGS TAKE PRECEDENCE OVER THESE STANDARD NOTES. TYPICAL DETAILS SHALL BE USED WHENEVER APPLICABLE. REFER TO THE SPECIFICATIONS FOR INFORMATION NOT COVERED BY THESE NOTES OR DRAWINGS.
 - ALL WORK NOT DETAILED OR NOTED SHALL BE CONSTRUCTED IN ACCORDANCE WITH OTHER SIMILAR WORK SHOWN ON THE DRAWINGS AND TYPICAL DETAILS. DIMENSIONS SHALL TAKE PRECEDENCE OVER GENERAL NOTES AND TYPICAL DETAILS.
 - NO PIPES OR DUCTS SHALL BE PLACED IN STRUCTURAL MEMBERS UNLESS SPECIFICALLY DETAILED AND APPROVED BY THE ENGINEER.
 - ASTM AND SIMILAR REFERENCES ARE FOR THE MOST RECENT EDITIONS AND ISSUES, UNLESS OTHERWISE NOTED.
 - CONTRACTOR SHALL INVESTIGATE SITE BEFORE EXCAVATION FOR UNSUITABLE CONDITIONS: UNCONSOLIDATED AND UNDOCUMENTED FILLS, BURIED STRUCTURES, UTILITIES, ETC. AND SHALL IMMEDIATELY NOTIFY THE ARCHITECT/ENGINEER OF ANY SITE CONDITIONS NOT REFLECTED ON THE DRAWINGS OR DIFFERENT FROM MAXIMUM AND MINIMUM DIMENSIONS INDICATED, INCLUDING CONFLICTS IN GRADES, INVERSE SLOPE CONDITIONS, GROUND WATER PRESENT, DEEPEDED FOOTINGS, UNCOVERED AND UNEXPECTED UTILITY LINES, ETC.
 - CONSTRUCTION MATERIALS SHALL BE READ OUT IF PLACES ON STRUCTURAL FRAME. LOAD SHALL NOT EXCEED THE DESIGN OF LIVE LOADS. PROVIDE SHORING AND BRACING WHERE DESIGN STRENGTH HAS NOT BEEN ATTAINED OR STRUCTURE IS NOT COMPLETE.
 - CONTRACTOR SHALL DETERMINE THE LOCATION OF UTILITY SERVICES IN THE AREA TO BE EXCAVATED BEFORE DIGGING. EXERCISE EXTREME CAUTION WHEN EXCAVATING AND TRENCHING.
 - SECURITY SYSTEM SHALL BE CONTRACTOR PROVIDED AND INSTALLED.
- A SEPARATE APPLICATION IS REQUIRED FOR SITE LIGHTING.



- SEPARATE PERMITS:**
- MODIFICATIONS TO THE AUTOMATIC SPRINKLERS AND FIRE ALARM SYSTEMS WILL BE SUBMITTED UNDER SEPARATE PERMITS.
 - SIGNAGE WILL BE SUBMITTED UNDER A SEPERATE PERMIT.

- WALL PARTITION NOTES:**
- SEE FLOOR PLANS FOR LOCATION AND EXTENT.
 - ADJUST WALL THICKNESS AS REQUIRED TO FLUSH BOTH SIDES OF WALL PARTITION WITH EXISTING ADJACENT PARTITION IN THE SAME PLANE.
 - ALL WET WALLS (WITHIN 24\"/>



PROJECT LOCATION:

2865 WEBB ROAD
MILTON, GA 30004

REVISIONS

NO	DATE:	DESCRIPTION:

GENERAL NOTES AND WALL PARTITION DETAILS

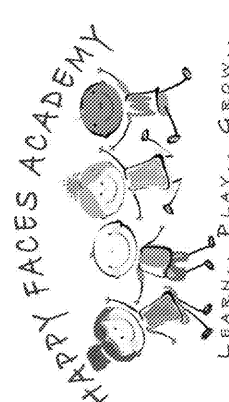
T1-2

DATE

PLANNING
ARCHITECTURE
INTERIORS

CALBERT
DESIGN GROUP

INFO@CALBERTDESIGN.COM | 878-396-1744 | 2951 CHEVY CHASE ST., SUITE 600, KENNESAW, GA 30144



WWW.NobelLearning.com

Order Plans @