



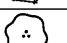
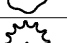
**GENERAL LANDSCAPE NOTES:**

- WARRANTY: ALL PLANTS SHALL BE WARRANTED TO REMAIN ALIVE, HEALTHY, AND IN THRIVING CONDITION FOR A PERIOD OF ONE YEAR FROM FINAL ACCEPTANCE
- PLANTS SHALL MEET DOT SPECIFICATIONS AND AMERICAN STANDARD FOR NURSERY STOCK STANDARDS.
- PLANTS SHALL BE SPECIMEN QUALITY. PLANTS SHALL BE SOUND, HEALTHY AND VISIBLY WELL BRANCHED, AND DENSELY FOLIATED WHEN IN LEAF.
- HEIGHT AND SPREAD DIMENSIONS SPECIFIED REFER TO THE MAIN BODY OF THE PLANT AND NOT FROM BRANCH TIP TO TIP. IF A RANGE OF SIZE IS GIVEN, NO PLANT SHALL BE AS LARGE AS THE MAXIMUM SIZE SPECIFIED.
- SHADE TREES SHALL BE STRAIGHT UNLESS OTHERWISE SPECIFIED
- PLANTS SHALL BE SUBJECT TO REVIEW BY LANDSCAPE ARCHITECT. LANDSCAPE ARCHITECT SHALL BE THE SOLE JUDGE OF THE QUALITY AND ACCEPTABILITY OF MATERIALS AND PLACEMENT.
- PLACE PLANTS UPRIGHT AND TURNED SO THAT THE MOST ATTRACTIVE SIDE IS VIEWED.
- BE FAMILIAR WITH UNDERGROUND UTILITIES BEFORE DIGGING. THE CONTRACTOR SHALL BE FULLY RESPONSIBLE FOR ALL DAMAGE OF UTILITY LINES.
- PROVIDE SHOVEL-CUT TRENCH AT SHRUB BEDS IN LAWN AREAS UNLESS OTHERWISE NOTED.
- PROVIDE 3" THICKNESS MULCH AT ALL PLANTS AND PLANTING BEDS. MULCH MUST BE 3" THICK AT TIME OF FINAL WALK-THROUGH. MULCH IN SHRUB AND TREE PLANTING BEDS SHALL BE PINE STRAW UNLESS OTHERWISE NOTED. MULCH IN GROUND COVER BEDS TO BE SHREDDED HARDWOOD UNLESS OTHERWISE NOTED. MULCH SAMPLE IS TO BE SUBMITTED FOR APPROVAL PRIOR TO INSTALLATION. MULCH IS TO BE REPLACED AT CONTRACTOR'S OWN EXPENSE IF LAID PRIOR TO APPROVAL.
- MAINTENANCE WORK SHALL BE PERFORMED UNTIL DATE OF FINAL ACCEPTANCE BY OWNER'S REPRESENTATIVE.
- CONTRACTOR'S PRICES SHALL INCLUDE ALL LABOR AND MATERIAL NECESSARY TO COMPLETE THE WORK, I.E. MULCH, PLANTING, SOIL MIX, WOOD AND WIRE STAKING MATERIAL, ETC.
- QUANTITIES NECESSARY TO COMPLETE THE WORK ON THE DRAWING SHALL BE FURNISHED. QUANTITY ESTIMATES HAVE BEEN MADE CAREFULLY, BUT THE OWNER'S REPRESENTATIVE ASSUMES NO LIABILITY FOR OMISSION OR ERRORS. HIS ESTIMATES ARE ONLY AN AID FOR CLARIFICATION OF UNITS AND A CHECK FOR THE CONTRACTOR TO COMPARE WITH HIS OWN ESTIMATES. DIFFERENCES SHALL BE BROUGHT TO THE ATTENTION OF OWNER'S REPRESENTATIVE. NO EXTRA COMPENSATION SHALL BE ALLOWED FOR EXTRA QUANTITIES NECESSARY TO COMPLETE THE WORK.
- WHERE LANDSCAPING AREAS ADJOIN GRASSED RIGHTS-OF-WAY, SUCH AREAS SHALL BE CONSIDERED PART OF THE LANDSCAPED AREA FOR PURPOSES OF MAINTENANCE AS OF COMPLETION OF SITE IMPROVEMENTS. THE PROPERTY OWNER SHALL HAVE AN IMPLIED EASEMENT OF THE RIGHT-OF-WAY EXTENDING FROM THE SITE TO THE ROAD PAVEMENT IN ORDER TO COMPLETE THE REQUIRED MAINTENANCE.
- A MAINTENANCE INSPECTION OF TREES WILL BE PERFORMED AFTER TWO FULL GROWING SEASONS FROM THE DATE OF THE FINAL CONSTRUCTION INSPECTION. PROJECT OWNERS AT THE TIME OF THE MAINTENANCE INSPECTION ARE RESPONSIBLE FOR ORDINANCE COMPLIANCE.
- CONTRACTOR TO DESIGN-BUILD IRRIGATION SYSTEM. IRRIGATION HEADS TO BE INSTALLED FLUSH WITH GRADE.

**CRITICAL NOTE:**

LANDSCAPE PLAN INDICATES DIAGRAMMATIC LOCATIONS ONLY. PLANTS ARE TO BE BROUGHT TO THE SITE AND SET IN GENERAL LOCATION (NOT INSTALLED), AS INDICATED ON THE LANDSCAPE PLAN(S). LANDSCAPE ARCHITECT TO APPROVE PLANT LAYOUT PRIOR TO ACTUAL INSTALLATION. IF PLANTS ARE INSTALLED PRIOR TO LANDSCAPE ARCHITECT'S REVIEW, ALL PLANTS WILL HAVE TO BE REPLANTED AT NO ADDITIONAL COSTS TO THE OWNER. CONTRACTOR TO COORDINATE SCHEDULE FOR REVIEW WITH LANDSCAPE ARCHITECT (48 HOUR NOTICE MINIMUM). NO PORTION OF THE CONTRACTOR'S PAY APPLICATION WILL BE APPROVED FOR LANDSCAPING UNTIL THE LANDSCAPE ARCHITECT HAS SIGNED OFF ON THE PLANT INSTALLATION.

**TREE PLANTING SCHEDULE**

TREES	QTY	BOTANICAL / COMMON NAME	CONT	CAL	% SPECIES	NATIVE	TREE CANOPY COVER CREDIT
	4	QUERCUS SHUMARDII/SHUMARD OAK HARDWOOD MIN. 8' HEIGHT	B & B	2" CAL.	33.3%	YES	1,600 SF X 3 = 4,800 SF
	3	QUERCUS PHELOS/WILLOW OAK HARDWOOD MIN. 8' HEIGHT	B & B	2" CAL.	33.3%	YES	1,600 SF X 3 = 4,800 SF
	3	GINKGO BILOBA/GINKGO (MALE) MIN. 8' HEIGHT	B&B	2" CAL	33.4%	NO	1,600 SF X 3 = 4,800 SF
	11	THUJA OCCIDENTALIS 'SMARAGD'/EMERALD GREEN ARBORVITAE MIN. 5' HEIGHT	B&B	5'		YES	
	9				100%	67.6%	14,400 UNITS

**LANDSCAPE REQUIREMENTS:**

20' LANDSCAPE STRIP ALONG FRONT PROPERTY LINE

1 TREE EVERY 30'

117.86 LF - 24 LF (DRIVEWAY WIDTH) / 30 LF = 3.13 TREES  
4.0 TREES REQUIRED

PROVIDED

TREES PROVIDED: 2 - 2" CALIPER SHUMARD HARDWOOD  
2 - 2" CALIPER WILLOW HARDWOOD

PARKING LOT TREES - A "VERY WIDE" TREE WITH IN 80' OF EACH PARKING SPACE AND A "VERY WIDE" TREE EVERY 6 SPACES.

19 SPACES / 1 TREE/6 SPACES = 3.16 TREES

4.0 TREES REQUIRED

PROVIDED

TREES PROVIDED: 3 - 2" CALIPER GINKO BILOBA  
1 - 2" CALIPER WILLOW HARDWOOD  
1 - 2" CALIPER SHUMARD HARDWOOD

**CANOPY REQUIREMENTS:**

T-4 OPEN ZONING

30% TREE CANOPY COVERAGE REQUIRED

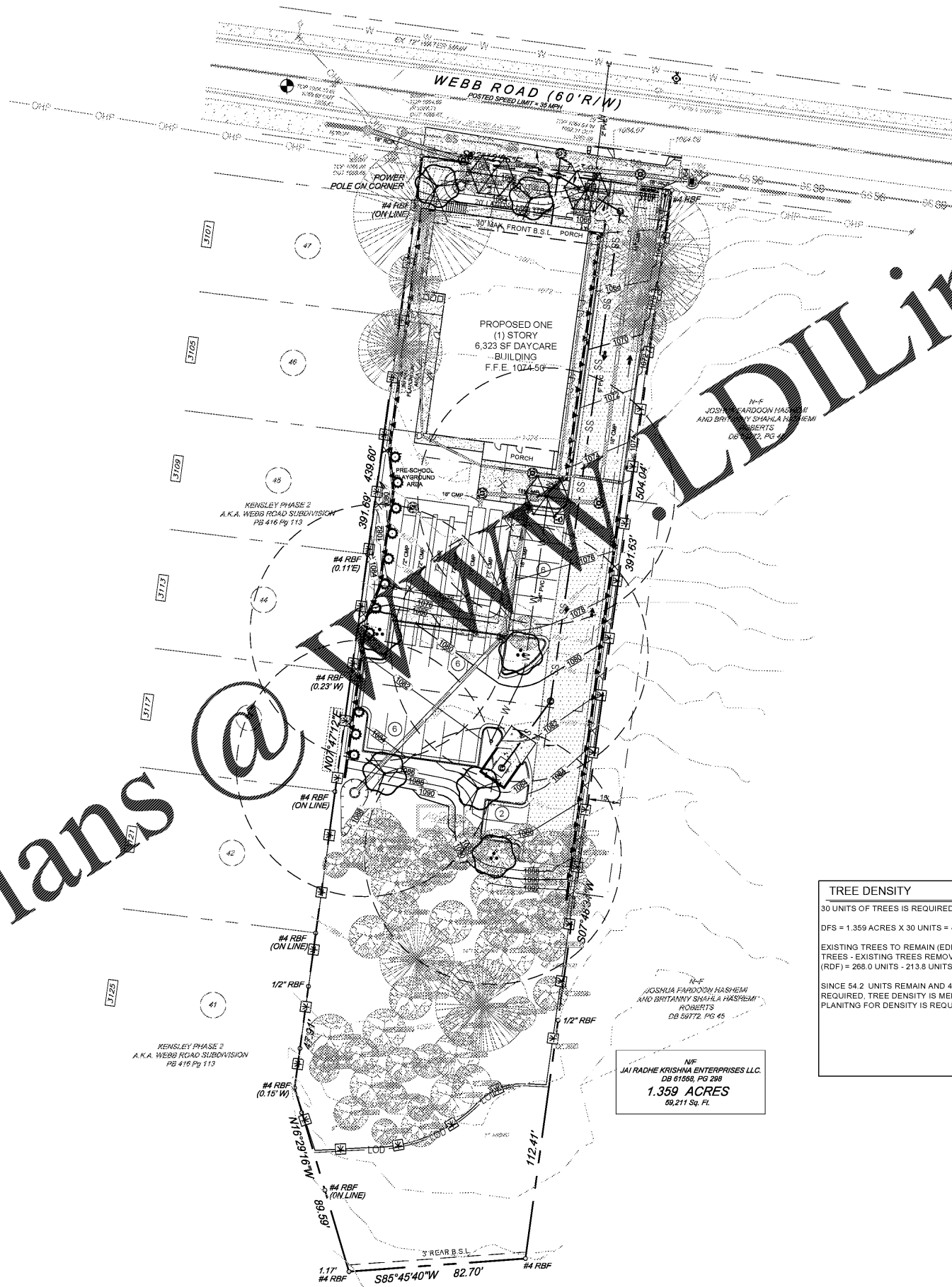
46,136.3 SF X 0.30 = 13,840.89 SF REQUIRED

PROVIDED

9 TREES @ 1,600 SF PER TREE = 14,400 SF



Know what's below.  
Call before you dig.



Order Plans @

NIP  
JAI RADHE KRISHNA ENTERPRISES LLC.  
DB 61666, PG 298  
1.359 ACRES  
59,211 Sq. Ft.

**TREE DENSITY**

30 UNITS OF TREES IS REQUIRED PER ACRE

DFS = 1.359 ACRES X 30 UNITS = 40.77 UNITS

EXISTING TREES TO REMAIN (EDF) = EXISTING TREES - EXISTING TREES REMOVED (RDF) = 268.0 UNITS - 213.8 UNITS = 54.2 UNITS

SINCE 54.2 UNITS REMAIN AND 40.77 UNITS IS REQUIRED, TREE DENSITY IS MEET. NO TREE PLANTING FOR DENSITY IS REQUIRED.

**EX. TREES**

6" HARDWOOD	15	1.8 UNITS	27.0 UNITS
7" HARDWOOD	5	1.8 UNITS	9.0 UNITS
8" HARDWOOD	22	2.4 UNITS	52.8 UNITS
9" HARDWOOD	6	2.4 UNITS	14.4 UNITS
10" HARDWOOD	11	2.4 UNITS	26.4 UNITS
11" HARDWOOD	4	3.2 UNITS	12.8 UNITS
12" HARDWOOD	6	3.2 UNITS	19.2 UNITS
14" HARDWOOD	3	3.6 UNITS	10.8 UNITS
15" HARDWOOD	1	3.6 UNITS	3.6 UNITS
TOTAL HARDWOODS = 176.0 UNITS			
10" PINE	1	2.4 UNITS	2.4 UNITS
11" PINE	1	3.2 UNITS	3.2 UNITS
12" PINE	3	3.2 UNITS	9.6 UNITS
14" PINE	1	3.6 UNITS	3.6 UNITS
16" PINE	2	4.0 UNITS	8.0 UNITS
17" PINE	1	4.0 UNITS	4.0 UNITS
18" PINE	1	4.0 UNITS	4.0 UNITS
20" PINE	2	4.0 UNITS	8.0 UNITS
21" PINE	1	4.8 UNITS	4.8 UNITS
24" PINE	2	9.3 UNITS	18.6 UNITS
26" PINE	1	11.1 UNITS	11.1 UNITS
30" PINE	1	14.7 UNITS	14.7 UNITS
TOTAL PINE = 92.0 UNITS			

TOTAL HARDWOODS = 176.0 UNITS

SUMMARY = 176.0 UNITS OF HARDWOODS + 92.0 UNITS OF PINES = 268.0 UNITS EXISTING ON THIS 1.359 ACRE TRACT

EDF = 268.0 UNITS

\* INDICATES SPECIMEN TREE

**EX. TREES TO BE REMOVED**

6" HARDWOOD	11	1.8 UNITS	19.8 UNITS
8" HARDWOOD	20	2.4 UNITS	48.0 UNITS
9" HARDWOOD	4	2.4 UNITS	9.6 UNITS
10" HARDWOOD	10	2.4 UNITS	24.0 UNITS
11" HARDWOOD	5	3.2 UNITS	16.0 UNITS
12" HARDWOOD	3	3.2 UNITS	9.6 UNITS
14" HARDWOOD	2	3.6 UNITS	7.2 UNITS
15" HARDWOOD	1	3.6 UNITS	3.6 UNITS
TOTAL REMOVED HARDWOODS = 137.8 UNITS			
10" PINE	1	2.4 UNITS	2.4 UNITS
11" PINE	1	3.2 UNITS	3.2 UNITS
12" PINE	2	3.2 UNITS	6.4 UNITS
14" PINE	1	3.6 UNITS	3.6 UNITS
16" PINE	2	4.0 UNITS	8.0 UNITS
18" PINE	1	4.0 UNITS	4.0 UNITS
20" PINE	1	4.0 UNITS	4.0 UNITS
24" PINE	2	9.3 UNITS	18.6 UNITS
26" PINE	1	11.1 UNITS	11.1 UNITS
30" PINE	1	14.7 UNITS	14.7 UNITS
TOTAL PINE = 76 UNITS			

TOTAL REMOVED HARDWOODS = 137.8 UNITS

SUMMARY = 137.8 UNITS OF HARDWOODS + 76.0 UNITS OF PINES = 213.8 UNITS EXISTING TREES TO BE REMOVED

RDF = 213.8 UNITS

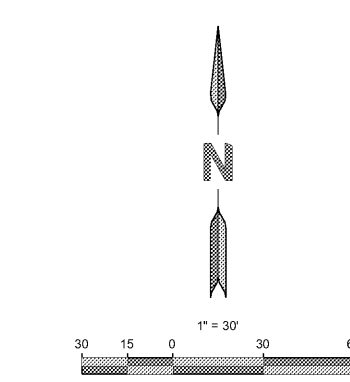
\* INDICATES SPECIMEN TREE

TOTAL PINE = 76 UNITS

SUMMARY = 137.8 UNITS OF HARDWOODS + 76.0 UNITS OF PINES = 213.8 UNITS EXISTING TREES TO BE REMOVED

RDF = 213.8 UNITS

\* INDICATES SPECIMEN TREE



ENGINEER:

**FORESITE**  
group

Foresite Group, Inc. w | www.fg-inc.net  
3740 Davinci Ct. o | 770.368.1399  
Suite 100 f | 770.368.1944  
Peachtree Corners, GA 30092

DEVELOPER:

JAI RADHE KRISHNA ENTERPRISES, LLC  
568 PEACHTREE PARKWAY  
CUMMING, GA 30041

CONTACT: RUPESH MANUGULA

PROJECT:

**DAY CARE FACILITY - WEBB ROAD**

2865 WEBB ROAD  
MILTON, GA 30004  
L.L. 1048, 2ND DISTRICT, 2ND SECTION

SEAL:

REVISIONS	DATE
ENVIRONMENTAL HEALTH	08-12-2020
CITY COMMENTS	10-7-2020

PROJECT MANAGER: JPS  
DRAWING BY: JCW  
JURISDICTION: MILTON, GA  
DATE: 07-15-2020  
SCALE: 1" = 30'  
TITLE:

LANDSCAPE PLAN

SHEET NUMBER: **L-1**

COMMENTS: NOT RELEASED FOR CONSTRUCTION

JOB/FILE NUMBER: 1418.001