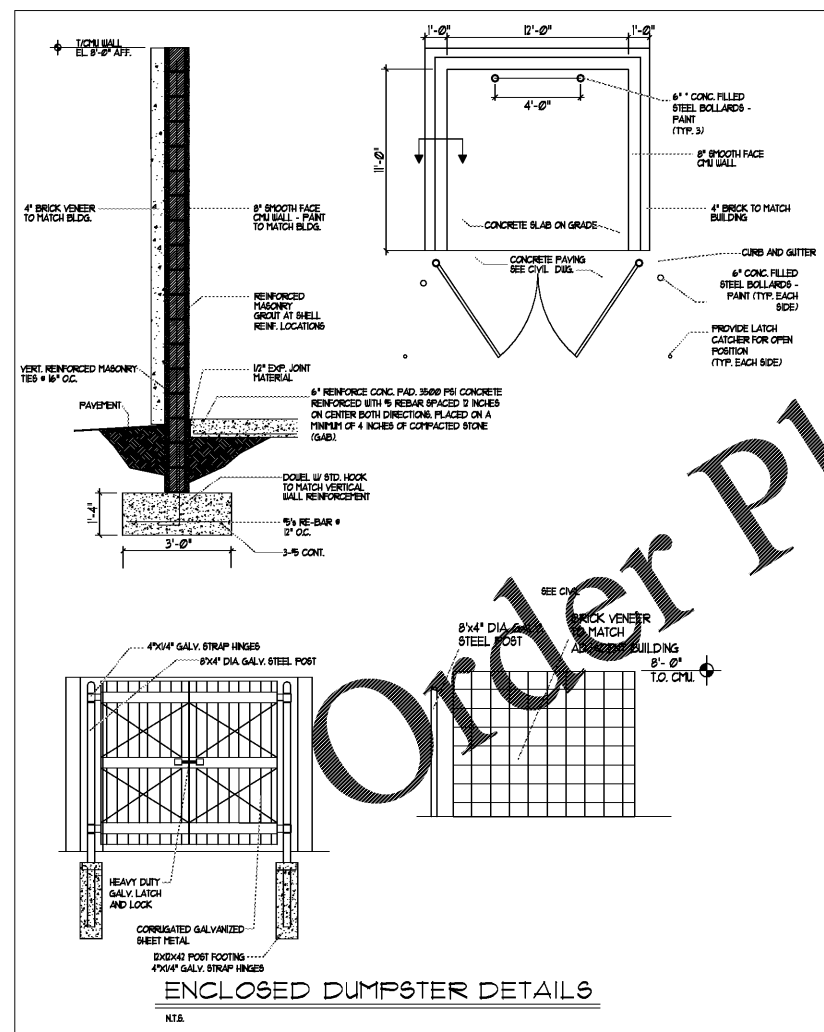


DEPARTMENT OF TRANSPORTATION
STATE OF GEORGIA

NO SCALE
AUGUST 2018

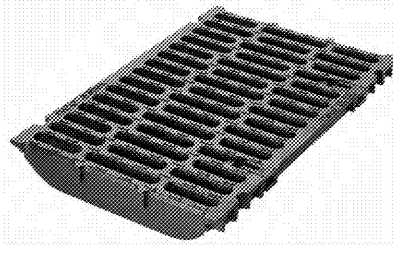
DESIGNED BY: SUBMITTED BY:
CHECKED BY: APPROVED BY:



Order Plans @

ACO DRAIN
12" width - ductile iron slotted grate

- Product Features**
- Complies to EN 1433 Load Class F - 200,000 lbs - 4,182 psi
 - Uses PowerLock® lockless locking system
 - Suitable for use with S300K and H300K channels
 - Manufactured from ductile iron to ASTM A 536-64 - Grade 304 65-45-12
 - Anti-Static legs



Specifications

General
The surface drainage system shall be ACO PowerLock S300K or H300K, complete with ACO ductile iron slotted grate with PowerLock locking system manufactured by ACO, Inc. or similar approval.

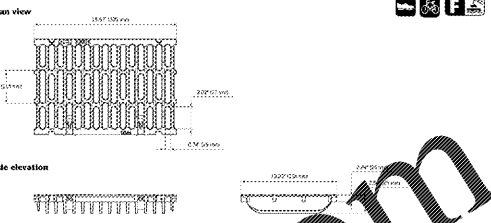
Materials
The grate shall be manufactured from ductile iron and have minimum properties as follows:

- Independently certified to meet Load Class F to EN 1433 - 200,000 lbs - 4,182 psi
- Ductile iron to ASTM A 536-64 - Grade 65-45-12
- Intake area of 613 sq. cm per 1 meter of grate.

The overall width of 13.2" (335mm) and overall depth of 2.67" (68mm). Slot measure at a maximum of 0.71" (18mm).

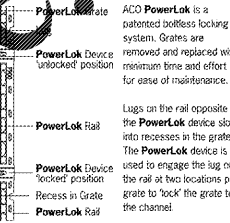
Grate
Grate is ductile iron to meet ASTM A 536-64 - Grade 65-45-12. After assembly, grates shall be secured to the trench in a manner that allows for removal and replacement of grates can be used as a cover for S300K or H300K.

ACO DRAIN
12" width - ductile iron slotted grate



Description	Part No.	Length	Width	Weight
PowerLock grate 12" ductile iron slotted grate, G15	02445	19.51 (500)	13.20 (335)	50.0

PowerLock locking mechanism



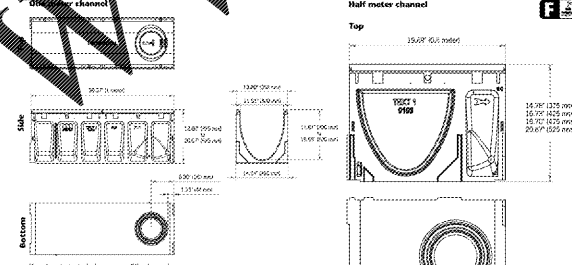
ACO PowerLock is a patented lockless locking system. Grates are removed and replaced with minimum time and effort for ease of maintenance.

The PowerLock device is used to engage the leg on the rail at two locations per grate to 'lock' the grate to the channel.

SPEC INFO

ACO, Inc. Northeast Sales Office West Sales Office Southeast Sales Office
 9470 Florence Drive 825 W. Shoemaker St. 4221 Thornton Blvd.
 Metairie, LA 70002 Fort Worth, TX 76112 Fort Worth, TX 76112
 Tel: (504) 835-7329 Tel: (817) 423-7888 Tel: (817) 423-7888
 Fax: (504) 835-7329 Fax: (817) 423-7888 Fax: (817) 423-7888
 Web: www.aco-usa.com

ACO DRAIN
PowerDrain - S300K Iron edged channels

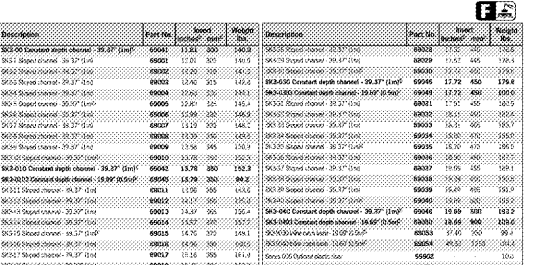


Keeps grates included on every 5th channel



Outlet	Product	Outlet size (mm)	Depth	GPM	CSF
A	Bottom outlet - SK-130	4"	11.21"	42.1	0.14
A	Bottom outlet - SK-3040	8"	19.68"	74.8	0.23
B	Bottom outlet - SK-600	6"	11.81"	44.8	1.19
B	Bottom outlet - SK-600	6"	19.68"	74.8	2.39
C	End outlet - SK-130	4"	11.81"	44.8	0.31
C	End outlet - SK-3040	8"	19.68"	74.8	0.62
D	End outlet - SK-130	4"	13.78"	51.1	1.52
D	End outlet - SK-130	4"	19.68"	74.8	3.03
E	End outlet - SK-130	4"	15.75"	57.4	2.49
F	End outlet - SK-3040	8"	19.68"	74.8	4.99
G	Type SK-9030	4"	19.68"	74.8	1.54
H	Type SK-9030	4"	19.68"	74.8	3.07
I	Type SK-9030	6"	19.68"	74.8	1.54
J	Type SK-9030	6"	19.68"	74.8	3.07
K	Type SK-9030	8"	19.68"	74.8	1.54
L	Type SK-9030	8"	19.68"	74.8	3.07
M	Type SK-9030	10"	19.68"	74.8	1.54
N	Type SK-9030	10"	19.68"	74.8	3.07
O	Type SK-9030	12"	19.68"	74.8	1.54
P	Type SK-9030	12"	19.68"	74.8	3.07
Q	Type SK-9030	14"	19.68"	74.8	1.54
R	Type SK-9030	14"	19.68"	74.8	3.07
S	Type SK-9030	16"	19.68"	74.8	1.54
T	Type SK-9030	16"	19.68"	74.8	3.07

ACO DRAIN
PowerDrain - S300K Iron edged channels



Keeps grates included on every 5th channel



Outlet	Product	Outlet size (mm)	Depth	GPM	CSF
A	Bottom outlet - SK-130	4"	11.21"	42.1	0.14
A	Bottom outlet - SK-3040	8"	19.68"	74.8	0.23
B	Bottom outlet - SK-600	6"	11.81"	44.8	1.19
B	Bottom outlet - SK-600	6"	19.68"	74.8	2.39
C	End outlet - SK-130	4"	11.81"	44.8	0.31
C	End outlet - SK-3040	8"	19.68"	74.8	0.62
D	End outlet - SK-130	4"	13.78"	51.1	1.52
D	End outlet - SK-130	4"	19.68"	74.8	3.03
E	End outlet - SK-130	4"	15.75"	57.4	2.49
F	End outlet - SK-3040	8"	19.68"	74.8	4.99
G	Type SK-9030	4"	19.68"	74.8	1.54
H	Type SK-9030	4"	19.68"	74.8	3.07
I	Type SK-9030	6"	19.68"	74.8	1.54
J	Type SK-9030	6"	19.68"	74.8	3.07
K	Type SK-9030	8"	19.68"	74.8	1.54
L	Type SK-9030	8"	19.68"	74.8	3.07
M	Type SK-9030	10"	19.68"	74.8	1.54
N	Type SK-9030	10"	19.68"	74.8	3.07
O	Type SK-9030	12"	19.68"	74.8	1.54
P	Type SK-9030	12"	19.68"	74.8	3.07
Q	Type SK-9030	14"	19.68"	74.8	1.54
R	Type SK-9030	14"	19.68"	74.8	3.07
S	Type SK-9030	16"	19.68"	74.8	1.54
T	Type SK-9030	16"	19.68"	74.8	3.07

SPEC INFO

ACO, Inc. Northeast Sales Office West Sales Office Southeast Sales Office
 9470 Florence Drive 825 W. Shoemaker St. 4221 Thornton Blvd.
 Metairie, LA 70002 Fort Worth, TX 76112 Fort Worth, TX 76112
 Tel: (504) 835-7329 Tel: (817) 423-7888 Tel: (817) 423-7888
 Fax: (504) 835-7329 Fax: (817) 423-7888 Fax: (817) 423-7888
 Web: www.aco-usa.com

ENGINEER:

FORESITE group

Foresite Group, Inc.
3740 Davinci Ct.
Suite 100
Peachtree Corners, GA 30092

www.fg-inc.net
o | 770.368.1399
f | 770.368.1944

DEVELOPER:

JAI RADHE KRISHNA ENTERPRISES, LLC
568 PEACHTREE PARKWAY
CUMMING, GA 30041

CONTACT: RUPESH MANUGULA

PROJECT:

DAY CARE FACILITY - WEBB ROAD

2865 WEBB ROAD
MILTON, GA 30004

PARCEL # 22 527010482814, FULTON CO PERMIT # 20-050MWR

SECTION: 1.1

SEAL:

GEORGIA
REGISTERED PROFESSIONAL ENGINEER
JAMES PATRICK STATION

REVISIONS

REVISIONS	DATE
ENVIRONMENTAL HEALTH	08-12-2020
CITY COMMENTS	10-7-2020

PROJECT MANAGER: JPS
DRAWING BY: JCW
JURISDICTION: MILTON, GA
DATE: 07-15-2020
SCALE: AS SHOWN

CONSTRUCTION DETAILS

SHEET NUMBER: C-6.1

COMMENTS: NOT RELEASED FOR CONSTRUCTION

JOB/FILE NUMBER: 1418.001

