

**GENERAL NOTES:**

- 1) PIPE LENGTHS REFLECT THE PIPES LINEAR LENGTH AND ARE SHOWN FROM CENTER OF STRUCTURE TO CENTER OF STRUCTURE.
- 2) EXISTING UTILITY DEPTHS ARE APPROXIMATED BASED ON 4 FT COVER FROM THE EXISTING GROUND SURFACE. PROPOSED UTILITY DEPTHS ARE BASED ON 4 FT OF COVER FROM THE PROPOSED GROUND SURFACE. CONTRACTOR SHALL FIELD VERIFY ALL UTILITY DEPTHS AT CROSSING AND CONTACT ENGINEER IMMEDIATELY IF CONFLICTS ARE ENCOUNTERED.
- 3) CONTRACTOR TO FIELD VERIFY EXISTING ELEVATIONS OF UTILITIES IN RIGHT OF WAY TO AVOID CONFLICTS. CONTACT ENGINEER IMMEDIATELY IF FIELD ELEVATIONS DIFFER FROM THE DESIGN DRAWINGS.
- 4) MAINTAIN MINIMUM 2" OF COVER OVER METAL AND PLASTIC PIPES DURING CONSTRUCTION ACTIVITIES.

ENGINEER:



ForeSite Group, Inc. | www.fs-inc.net  
 3740 Davinci Ct. | o | 770.368.1399  
 Suite 100 | f | 770.368.1944  
 Peachtree Corners, GA 30092

DEVELOPER:

JAI RADHE KRISHNA ENTERPRISES, LLC  
 568 PEACHTREE PARKWAY  
 CUMMING, GA 30041

CONTACT: RUPESH MANUGULA

PROJECT:  
**DAY CARE FACILITY - WEBB ROAD**  
 2885 WEBB ROAD  
 MILTON, GA 30004  
 ILL. 1048, 2ND DISTRICT, 2ND SECTION  
 PARCEL #22 527010482814, FULTON CO PERMIT # 20-050WR

SEAL:



REVISIONS DATE

ENVIRONMENTAL HEALTH 08-12-2020  
 CITY COMMENTS 10-7-2020

PROJECT MANAGER: JPS

DRAWING BY: JCW

JURISDICTION: MILTON, GA

DATE: 07-15-2020

SCALE: AS SHOWN

TITLE:

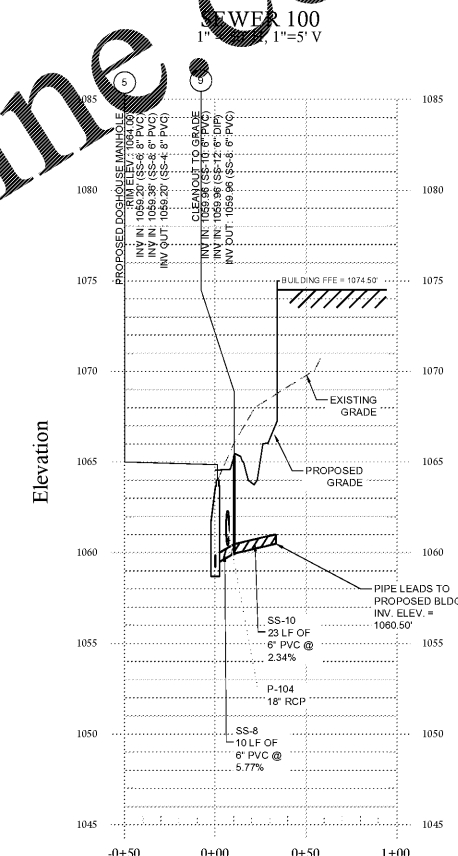
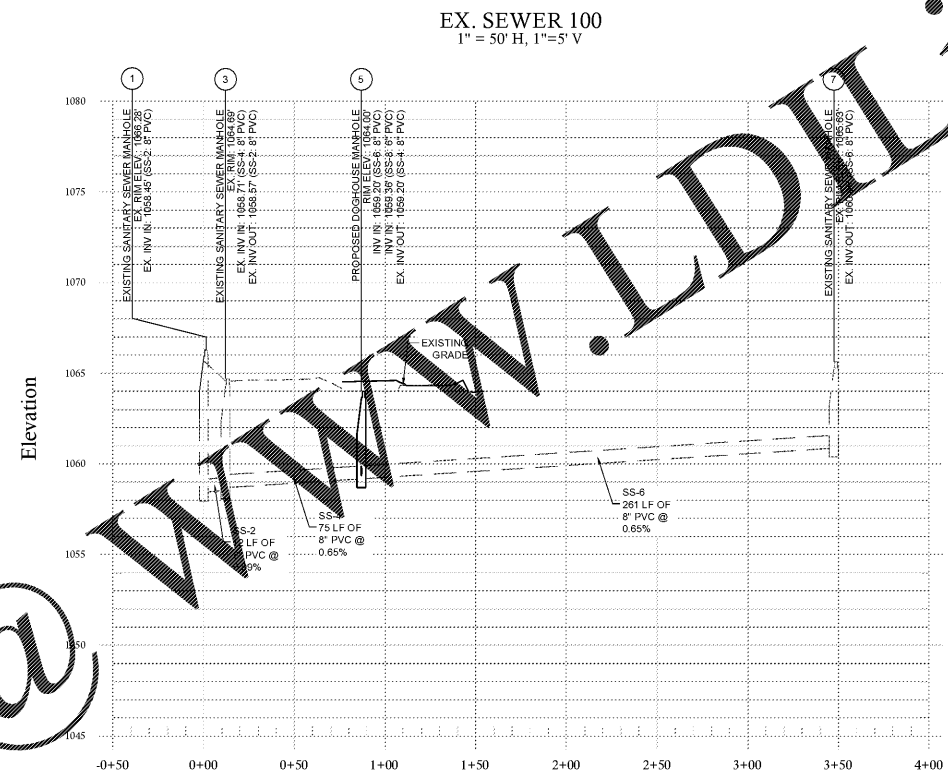
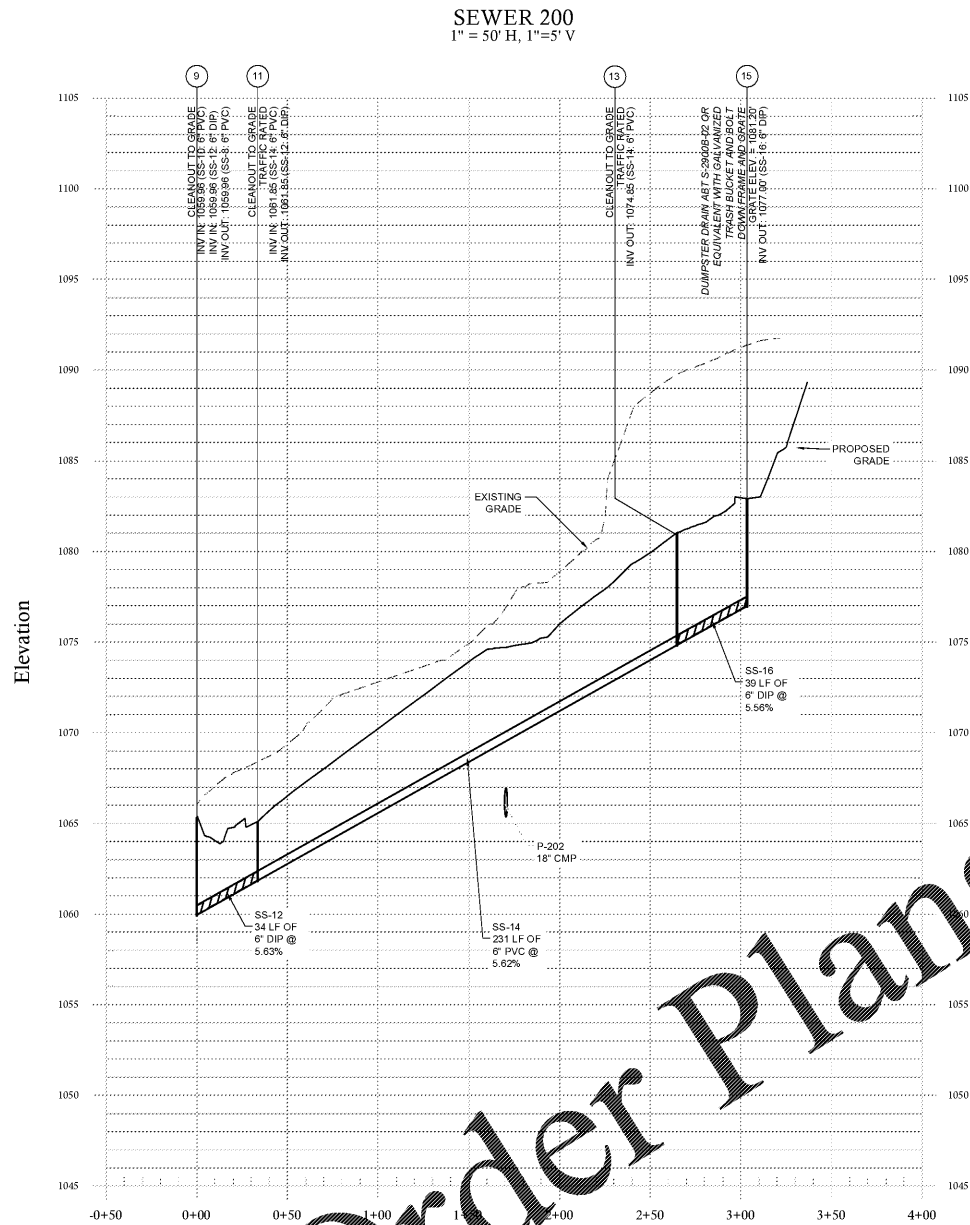
SANITARY SEWER PROFILES

SHEET NUMBER:

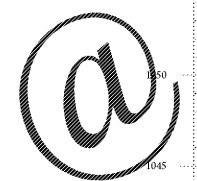
**C-3.2**

COMMENTS: NOT RELEASED FOR CONSTRUCTION

JOB/FILE NUMBER: 1418.001



Order Plans @



Know what's below. Call before you dig.

