

UTILITY NOTES:

- SAWNEE EMC WILL PROVIDE UNDERGROUND ELECTRICAL SERVICE FROM THE EXISTING SERVICE POLE TO THE TRANSFORMER PAD. CONTRACTOR MUST PROVIDE TWO 6" PVC (SCH 80) CONDUITS AND A FULL STRING FROM THE EXISTING ELECTRICAL SERVICE POLE TO THE PROPOSED TRANSFORMER LOCATION. THE CONTRACTOR IS ALSO RESPONSIBLE FOR INSTALLING THREE 3" PVC CONDUITS AND SECONDARY WIRING FROM THE TRANSFORMER PAD TO THE PROPOSED BUILDING. THE CONTRACTOR IS RESPONSIBLE FOR ALL COSTS ASSOCIATED WITH THE POWER SERVICE INSTALLATION AND SHALL COORDINATE WITH THE POWER COMPANY FOR FINAL UNDERGROUND CONDUIT LOCATIONS.
- ATLANTA GAS LIGHT WILL PERFORM THE GAS SERVICE CONNECTION, INSTALL THE CONDUIT, AND SET THE METER FOR THE BUILDING. THE CONTRACTOR IS RESPONSIBLE FOR PROVIDING THE SERVICE FROM THE METER INTO THE PROPOSED BUILDING. CONTRACTOR MUST COORDINATE WITH ATLANTA GAS LIGHT.
- CONTRACTOR MUST PROVIDE AND INSTALL A 3" PVC CONDUIT WITH PULL STRING, FROM THE EXISTING TELEPHONE SERVICE POLE TO THE TELEPHONE BOARD IN THE BUILDING. THE CONTRACTOR MUST ALSO PROVIDE A #6 GROUND WIRE AT THE TELEPHONE BOARD FOR THE TELEPHONE COMPANY TO INSTALL A PHONE LINE.
- FULTON COUNTY WATER WILL FURNISH THE DOMESTIC WATER METER AND ALL EQUIPMENT NEEDED TO TAP THE EXISTING WATER LINE. THE CONTRACTOR MUST PROVIDE AND INSTALL THE METER BOX, DOUBLE CHECK BACKFLOW PREVENTER AND ENCLOSURE, AND THE IRRIGATION LINES TO THE AREAS SPECIFIED ON THIS SHEET AND ON SHEET L-1.
- FULTON COUNTY WATER WILL FURNISH THE IRRIGATION METER AND ALL EQUIPMENT NEEDED TO TAP THE EXISTING WATER LINE. THE CONTRACTOR MUST PROVIDE AND INSTALL THE METER BOX, DOUBLE CHECK BACKFLOW PREVENTER AND ENCLOSURE, AND THE IRRIGATION LINES TO THE AREAS SPECIFIED ON THIS SHEET AND ON SHEET L-1.
- COORDINATE AS REQUIRED WITH THE CITY OF MILTON INSPECTIONS DURING CONSTRUCTION FOR REQUIRED INSPECTIONS.
- THIS SITE INDICATES POTABLE WATER SERVICE AND SANITARY SEWER LATERALS. THIS WORK IS TO BE INSTALLED BY A LICENSED LAWYER. ALL WORK MUST BE INSPECTED BY THE CITY OF MILTON CODES AND INSPECTION DEPARTMENT.
- ALL ON-SITE PVC PIPE SHALL HAVE CLASS B BEDDING.
- ALL CONDUIT, PIPE, AND CHASE PIPE SHALL BE WRAPPED WITH THE APPROPRIATE LOCATION WIRE AND TAPE.
- NO PRESSURE REDUCING VALVES ARE TO BE INSTALLED ON FIRE LINES. ALL FIRE LINES ARE TO BE INSPECTED BY THE CITY OF MILTON FIRE SERVICE PRIOR TO COVERING.
- NOTIFY WATER AND SEWER INSPECTOR PRIOR TO START OF CONSTRUCTION.
- CONTRACTOR SHALL PROVIDE A COMPLETE SET OF AS-BUILT DRAWINGS INCLUDING ALL RIM ELEVATIONS, PIPE SIZES, AND PIPE MATERIAL FOR ALL PUBLIC MAINS TO THE ENGINEER AS SOON AS INSTALLATION IS COMPLETE.
- OWNER SHALL BE RESPONSIBLE FOR ANY REPAIR OR REPLACEMENT OF ANY IMPROVEMENTS WITHIN THE SANITARY SEWER, WATER, DRAINAGE EASEMENT(S) DUE TO MAINTENANCE OF SEWER, WATER, STORM DRAIN OF THE CITY OF MILTON.
- CONTRACTOR SHALL INSTALL THE DOWNSTREAM SANITARY SEWER CONNECTION IN THE RIGHT-OF-WAY PRIOR TO THE INSTALLATION OF THE ON-SITE SERVICE LATERALS. CONTRACTOR SHALL FIELD VERIFY ALL EXISTING UTILITIES SHOWN ON THE PLANS BY POT-HOLDING THE LINES. THE CONTRACTOR SHALL HAVE THE LINES SURVEYED, INCLUDING HORIZONTAL AND VERTICAL LOCATION, AND THE SURVEYED POINTS SENT TO THE PROJECT ENGINEER TO DETERMINE IF ANY UTILITY CONFLICTS WILL AFFECT THE CURRENT SANITARY SEWER DESIGN.
- PVC WATER LINES LESS THAN 3" SHALL BE ASTM D 2241, SDR 21 WITH INTEGRALLY MOLDED BELL ENDS, ASTM D 2672. PVC WATER LINES 3" AND LARGER SHALL BE AWWA C900, RATED DR 18 (CLASS 150) WITH INTEGRALLY MOLDED BELL ENDS, ASTM D3139. DIP WATER LINES SHALL BE AWWA C151, THICKNESS CLASS 50.
- PVC SANITARY SEWER LINES SHALL BE ASTM D 3034, RATED SDR 35 WITH INTEGRALLY MOLDED BELL ENDS, ASTM D 3034, TABLE 2, WITH FACTORY SUPPLIED ELASTOMERIC GASKETS AND LUBRICANT. DIP SANITARY SEWER LINES SHALL BE ASTM A746, CLASS 50 WITH AWWA C111, RUBBER GASKET JOINT DEVICES.
- DEMOLISHED UTILITIES NOT DEPICTED ON THIS SHEET. REFER TO THE DEMOLITION PLAN.
- ALL PROPOSED AND UPGRADED WATER SYSTEM STRUCTURES MUST BE DESIGNED ACCORDING TO THE LATEST FULTON COUNTY STANDARDS.

EXISTING MANHOLE NOTES:

- CONTRACTOR TO FIELD VERIFY THE LOCATION AND INVERT OF THE EXISTING WASTEWATER LINE PRIOR TO CONSTRUCTION.
- REMOVE AND REPLACE THE EXISTING INVERT TO ACCEPT THE NEW LINE AS REQUIRED IN THE FIELD.
- CORE FOR NEW LATERAL FROM THE INSIDE OF THE MANHOLE IN THE PRESENCE OF THE INSPECTOR.
- NEW DROP LINE TO ENTER MANHOLE AT 0.44 FEET ABOVE THE EFFLUENT INVERT.
- REBUILD THE WATER TAP AND INVERT WITH ROLLOCK BRICKS TO DIRECT THE RUNOFF FROM THE NEW LINE TO EXISTING EFFLUENT INVERT.
- REHABILITATE EXISTING MANHOLE AS REQUIRED IN FIELD TO BRING MANHOLE INTO COMPLIANCE WITH FULTON COUNTY STANDARDS AND REGULATIONS.

CEC
CIVIL ENGINEERING CONSULTANTS, INC.
 4994 Lower Powell Road, Suite 317 • Marietta, Georgia 30068 • (770) 577-5747 • www.cec-engineering.com
 June 29, 2020

Mr. Rupesh Manugala
 Jai Radhe Enterprises, LLC
 508 Peachtree Parkway
 Cumming, GA 30092

RE: Fire Hydrant Test Results for 2865 Webb Road, City of Milton, Georgia

Dear Mr. Manugala:

On Monday, June 29, 2020, Civil Engineering Consultants, Inc. (CEC) performed one (1) fire hydrant flow test at 2865 Webb Road, City of Milton, Georgia. The results of the test are given in the table below.

Flow Test Summary - Fire Hydrant #1	
Location: <i>Webb Road (See Attachments)</i>	Water System Owner: <i>Fulton County</i>
Date and Time of Test: <i>06-29-20 @ 08:58 AM</i>	Water Main Size: <i>12-inch</i>
Witness: <i>N/A</i>	Static Pressure (@ FH B): <i>92 psi</i>
Static Pressure (@ FH B): <i>92 psi</i>	Static Pressure (@ FH A): <i>83 psi</i>
Residual Pressure (@ FH B): <i>83 psi</i>	Static Pressure (@ FH A): <i>83 psi</i>
Flow (@ FH A): <i>1,232 gpm</i>	Flow (@ FH B): <i>1,232 gpm</i>
Water flowed during test: <i>866 gallons</i>	Flow @ 20 psi at source (POC): <i>3,878 gpm</i>
Test Conducted by: <i>Scott Maben, Civil Engineering Consultants, Inc.</i>	

The flows at 20 psi represent a decreased Hydraulic Grade Line (HGL) of 5 psi to simulate periods of high sustained demand. Please call with any questions.

Very truly yours,
 CIVIL ENGINEERING CONSULTANTS, INC.

Andrew E. Luvogoy, P.E.
 President

Enclosures: Site Sketch
 Data Logger

3065 Webb Road, City of Milton, Georgia 30068 • (770) 577-5747 • www.cec-engineering.com
 4994 Lower Powell Road, Suite 317 • Marietta, Georgia 30068 • (770) 577-5747 • www.cec-engineering.com

LEGEND

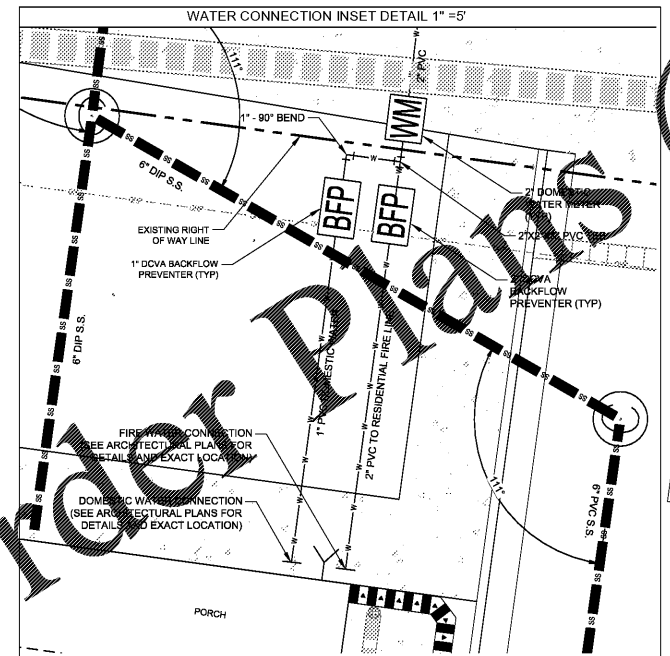
	EXISTING FENCE LINE
	PROPERTY LINE
	EXISTING CABLE TELEVISION LINE
	EXISTING FIBER OPTIC LINE
	EXISTING OVERHEAD POWER LINE
	EXISTING UNDERGROUND POWER LINE
	EXISTING UNDERGROUND TELEPHONE LINE
	EXISTING GAS LINE
	EXISTING SANITARY SEWER LINE
	EXISTING WATER LINE
	EXISTING STORM LINE
	PROPOSED CABLE TELEVISION LINE
	PROPOSED FIBER OPTIC LINE
	PROPOSED OVERHEAD POWER LINE
	PROPOSED UNDERGROUND POWER LINE
	PROPOSED UNDERGROUND TELEPHONE LINE
	PROPOSED GAS LINE
	PROPOSED SANITARY SEWER LINE
	PROPOSED WATER LINE
	PROPOSED FIRE WATER LINE
	PROPOSED STORM LINE
	INDICATES THRUST BLOCKING

FIRE MARSHALL NOTES:

- ALL FIRE DEPARTMENT CONNECTIONS (FDC) TO BE BETWEEN 18" AND 48" ABOVE GROUND LEVEL.
- INSTALLATION AND/OR REPAIR OF UNDERGROUND FIRE SPRINKLER WATER SUPPLIES TO BE PERFORMED BY AN UTILITY OR FIRE SPRINKLER CONTRACTOR OR PLUMBER. CONTRACTOR LICENSED UNDER 2010 GEORGIA CODE TITLE 25, CHAPTER 11, SECTION 25-11-7.
- FIRE HYDRANTS SHALL BE A MINIMUM OF 3 FT. AND A MAXIMUM OF 15" FROM THE BACK OF CURB OR ROAD EDGE WITH THE LARGE FIRE DEPARTMENT CONNECTION FACING THE NEAREST FIRE DEPARTMENT ACCESS POINT AND SET A MINIMUM OF 18" AND A MAXIMUM OF 36" ABOVE FINISHED GRADE TO THE CENTER OF THE LARGE FIRE DEPARTMENT CONNECTION.
- FIRE HYDRANTS AND WATER MAINS ARE TO BE INSTALLED, FLUSHED, AND ANY PRESSURE BEFORE ANY COMBUSTIBLE CONSTRUCTION IS STARTED.
- DURING CONSTRUCTION AND FOR PERMANENT ACCESS, ROADWAYS CONSTRUCTED OF AN ALL WEATHER SURFACE CAPABLE OF SUPPORTING 75,000 POUNDS OF GROSS WEIGHT SHALL BE PROVIDED PER THE INTERNATIONAL BUILDING CODE, CHAPTER 5, SECTION 503.2.3, 2012 EDITION.
- MARKINGS AND SIGNAGE OF FIRE LANES SHALL BE PROVIDED PER THE REQUIREMENTS OF THE INTERNATIONAL FIRE CODE, CHAPTER 5, SECTION 503.3, 2012 EDITION.
- APPROVED FIRE APPARATUS ACCESS ROADS SHALL BE PROVIDED FOR EVERY FACILITY BUILDING OR PORTION OF A BUILDING. THE FIRE APPARATUS ACCESS SHALL EXTEND TO WITHIN 150 FEET OF ALL PORTIONS OF THE FACILITY OR ANY PORTION OF THE EXTERIOR WALL OF THE FIRST STORY OF THE BUILDING AS MEASURED BY AN APPROVED ROUTE AROUND THE EXTERIOR OF THE BUILDING OR FACILITY. INTERNATIONAL FIRE CODE, CHAPTER 5, SECTION 503.1.1, 2012 EDITION.

SANITARY SEWER NOTES:

- NO TREES WILL BE PLANTED IN A UTILITY EASEMENT OR ABOVE ANY UTILITY LINE.
- CONTRACTOR MUST VERIFY THE LOCATION AND INVERT OF THE EXISTING WASTEWATER LINE PRIOR TO CONSTRUCTION.
- CONTRACTOR TO CUT AND REMOVE PIPE ONLY UPON FINAL APPROVAL BY THE FULTON COUNTY INSPECTOR.
- ALL WASTEWATER LINES AND LATERALS WITH LESS THAN ONE-FOOT CLEARANCE TO ANOTHER UTILITY LINE SHALL BE CONSTRUCTED WITH A CONCRETE SADDLE TO MAINTAIN SEPARATION.



FOR STANDARD FULTON COUNTY WATER AND SEWER NOTES REFER TO DRAWING C-3.1

FOR ADDITIONAL FIRE MARSHAL AND FULTON COUNTY WATER AND SEWER NOTES SEE DRAWING C-3.2

SEWER LATERALS OUTSIDE OF BUILDING REQUIRE SEPARATE PLUMBING PERMIT.

ALL WATER MAINS SHALL BE MINIMUM 6" CLASS 5 DIP OR BETTER.

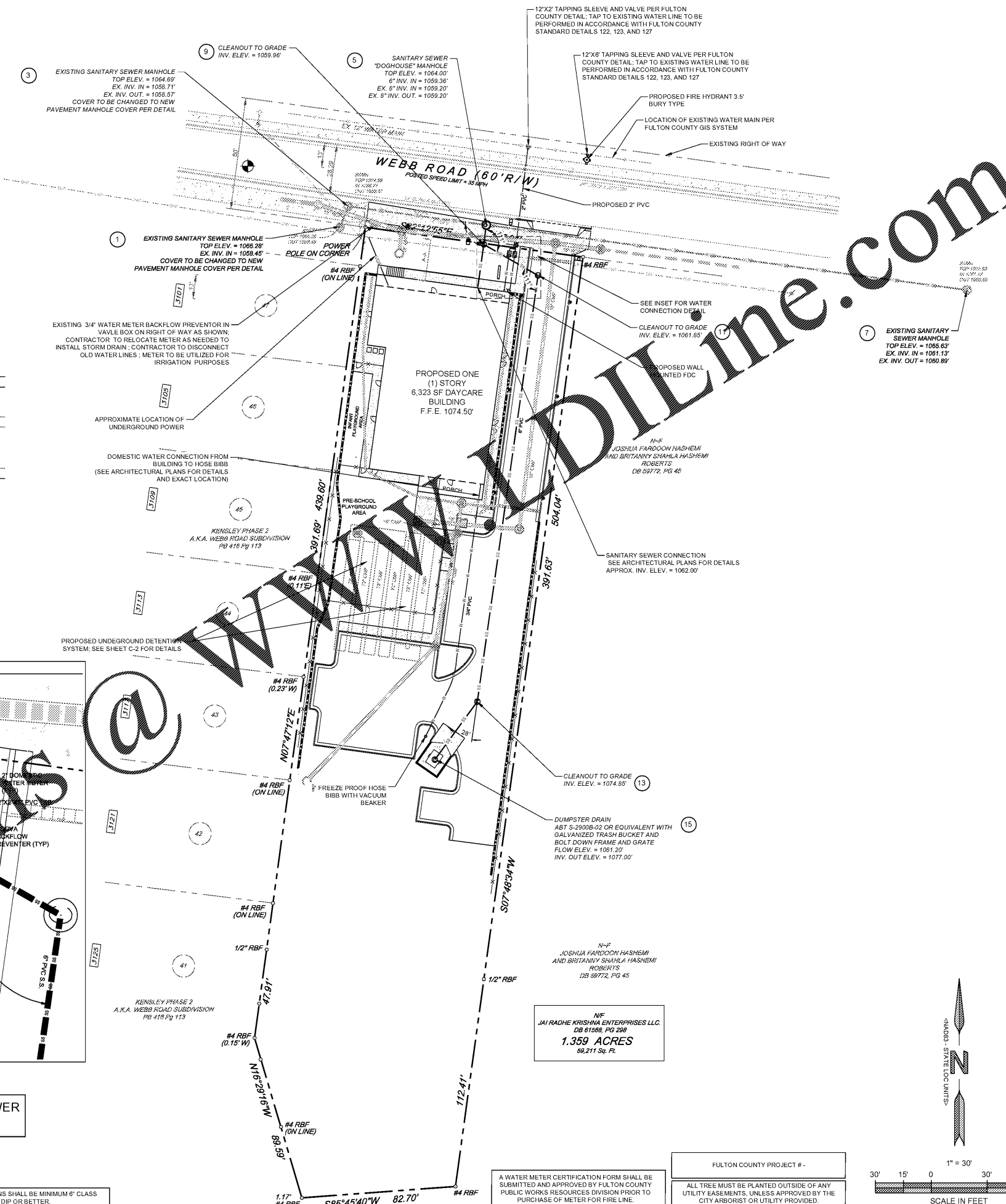
CONTRACTOR TO CONTACT UTILITIES PROTECTION CENTER PRIOR TO ANY EXCAVATION

PROPOSED PROJECT IS SERVED BY AN EXISTING GRAVITY FED SEWER

ALL WATER MAINS SHALL BE MINIMUM 6" CLASS 5 DIP OR BETTER.



Know what's below. Call before you dig.



ENGINEER:
FORESITE group
 Foresite Group, Inc.
 3740 Davinci Ct.
 Suite 100
 Peachtree Corners, GA 30092
 www.fg-inc.net
 770.368.1399
 770.368.1944

DEVELOPER:
 JAI RADHE KRISHNA ENTERPRISES, LLC
 568 PEACHTREE PARKWAY
 CUMMING, GA 30041
 CONTACT: RUPESH MANUGALA

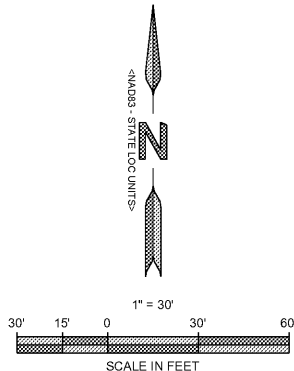
PROJECT:
DAY CARE FACILITY - WEBB ROAD
 2865 WEBB ROAD
 MILTON, GA 30004
 ILL. 1048, 2ND DISTRICT, 2ND SECTION
 PARCEL # 22 527010482814, FULTON CO PERMIT # 20-050WR



REVISIONS	DATE
ENVIRONMENTAL HEALTH	08-12-2020
CITY COMMENTS	10-7-2020
FULTON COUNTY COMMENTS	11-10-2020

PROJECT MANAGER: JPS
 DRAWING BY: JCW
 JURISDICTION: MILTON, GA
 DATE: 07-15-2020
 SCALE: AS SHOWN
 TITLE:

UTILITIES PLAN
C-3
 SHEET NUMBER:
 COMMENTS: NOT RELEASED FOR CONSTRUCTION
 JOB/FILE NUMBER: 1418.001



FULTON COUNTY PROJECT # -

A WATER METER CERTIFICATION FORM SHALL BE SUBMITTED AND APPROVED BY FULTON COUNTY PUBLIC WORKS RESOURCES DIVISION PRIOR TO PURCHASE OF METER FOR FIRE LINE.

ALL TREE MUST BE PLANTED OUTSIDE OF ANY UTILITY EASEMENTS, UNLESS APPROVED BY THE CITY ARBORIST OR UTILITY PROVIDED.