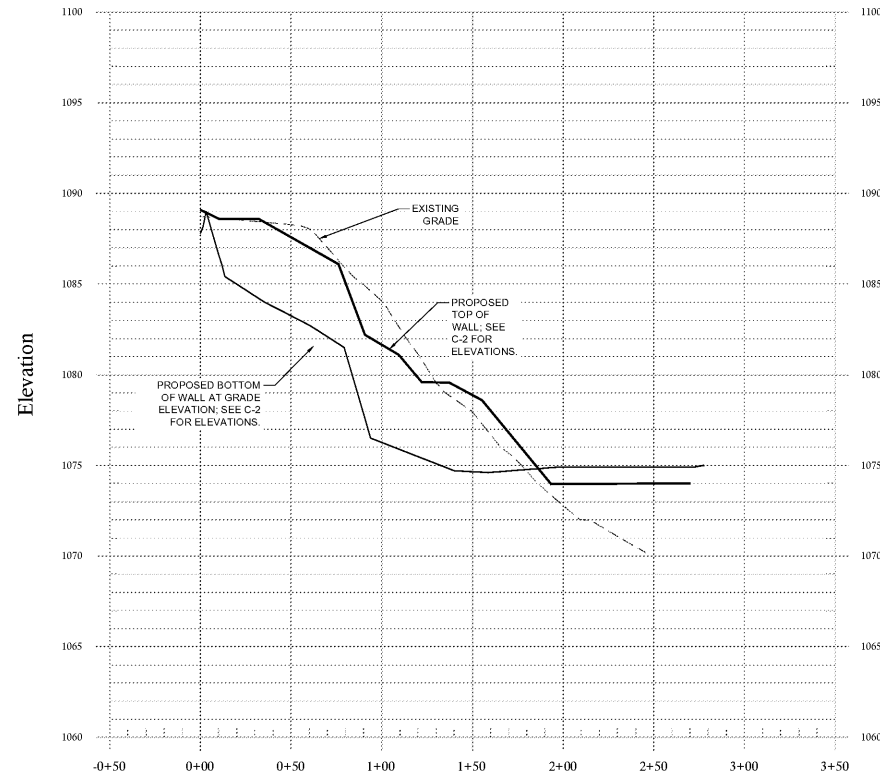
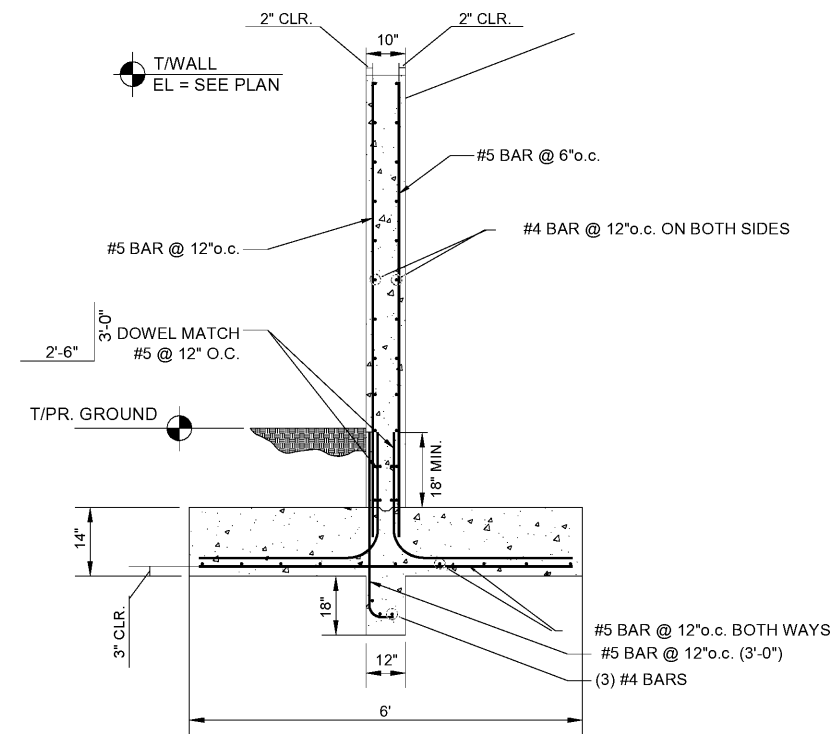


RETAINING WALL #1
1" = 50' H, 1" = 5' V

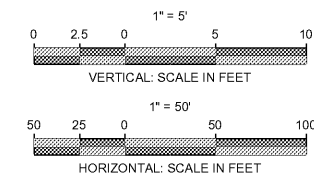


Order Plans @ www.LDILine.com



RETAINING WALL SECTION (TYP.)
FOR RETAINING WALLS

N.T.S.



ENGINEER:

FORESITE
group

Foresite Group, Inc. w | www.fg-inc.net
3740 Davinci Ct. o | 770.368.1399
Suite 100 f | 770.368.1944
Peachtree Corners, GA 30092

DEVELOPER:

JAI RADHE KRISHNA ENTERPRISES, LLC
568 PEACHTREE PARKWAY
CUMMING, GA 30041

CONTACT: RUPESH MANUGULA

PROJECT:
DAY CARE FACILITY - WEBB ROAD

2865 WEBB ROAD
MILTON, GA 30004
LL 1048, 2ND DISTRICT, 2ND SECTION
PARCEL #22 527010482814, FULTON CO PERMIT # 20-050WR

SEAL:



REVISIONS	DATE
ENVIRONMENTAL HEALTH	08-12-2020
CITY COMMENTS	10-7-2020

PROJECT MANAGER: JPS
DRAWING BY: JCW
JURISDICTION: MILTON, GA
DATE: 07-15-2020
SCALE: AS SHOWN
TITLE:

RETAINING WALL PROFILES

SHEET NUMBER:

C-2.9

COMMENTS: NOT RELEASED FOR CONSTRUCTION

JOB/FILE NUMBER: 1418.001



Know what's below.
Call before you dig.