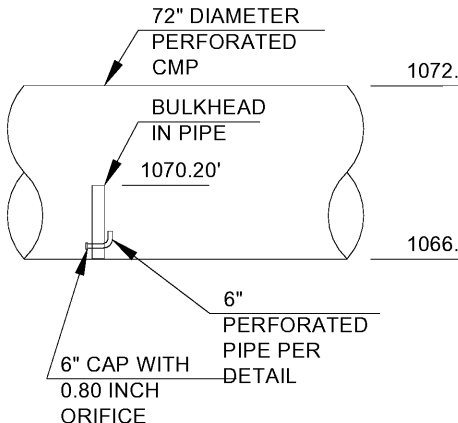
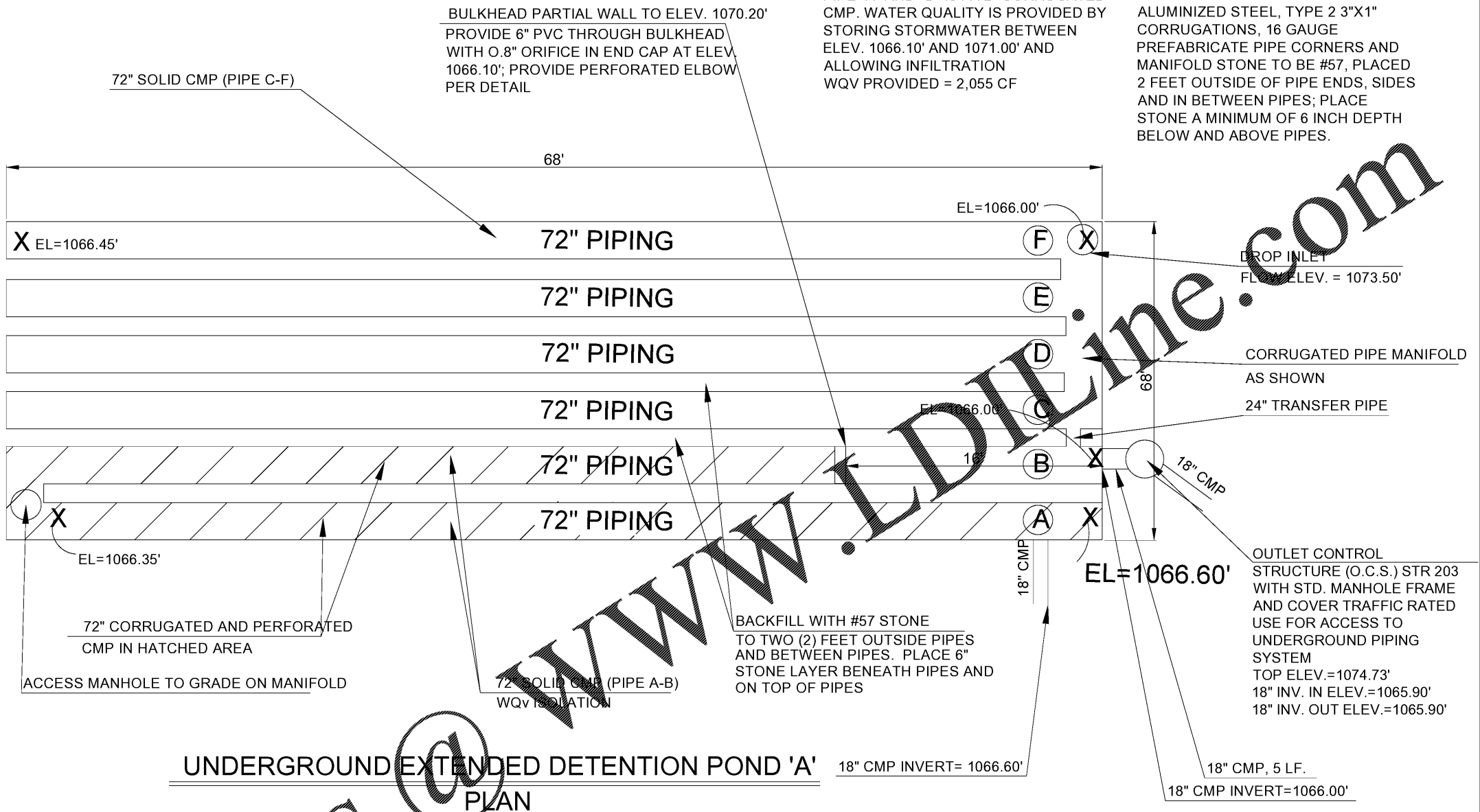


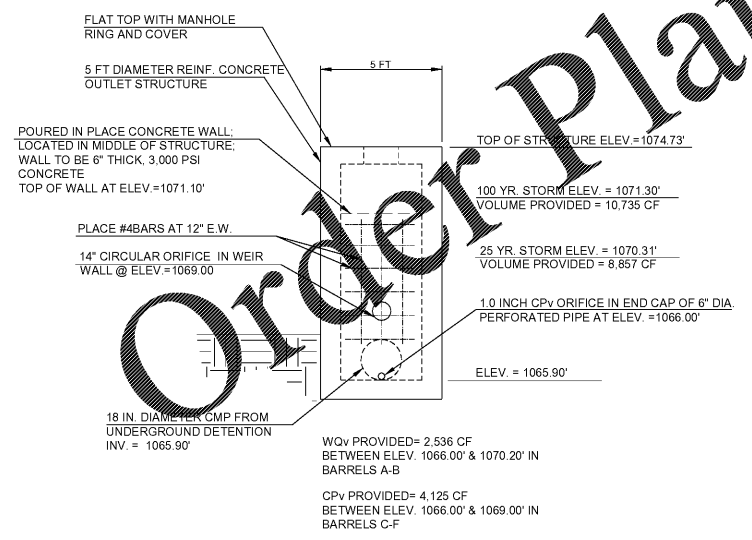
#57 STONE AROUND PIPE; STONE ACTS AS A INFILTRATION TRENCH UNDER ISOLATION ROW



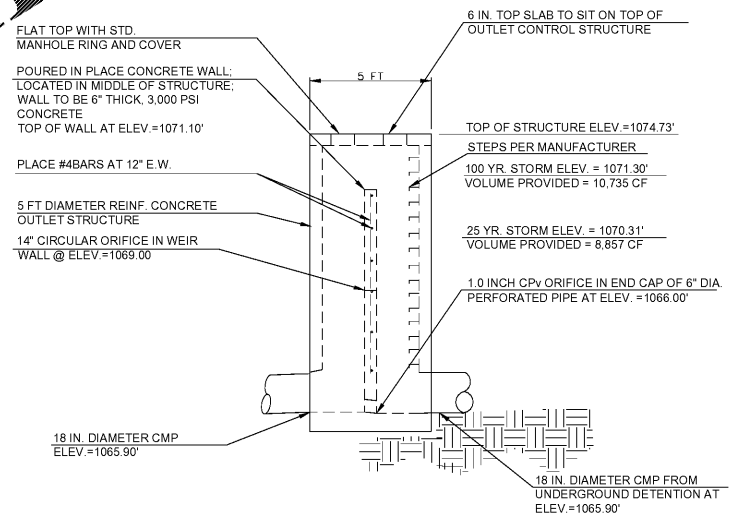
DETAIL OF BULKHEAD/ORIFICE IN 72" PERFORATED PIPE



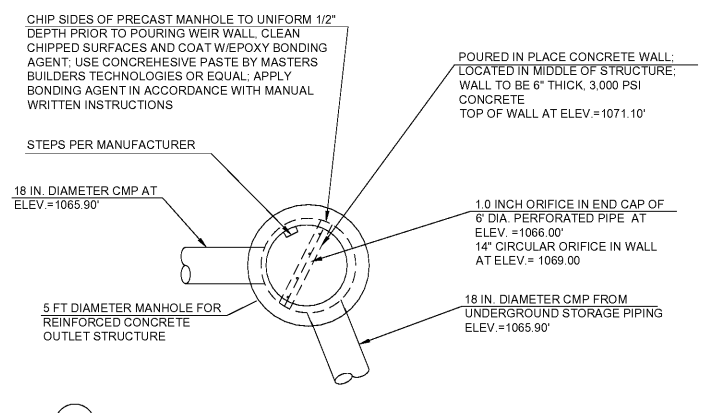
UNDERGROUND EXTENDED DETENTION POND 'A' PLAN



A-2 OUTLET STRUCTURE DETAIL, FRONT



A-2 OUTLET STRUCTURE DETAIL, SIDE
NO SCALE



A-2 OUTLET STRUCTURE DETAIL, TOP
NO SCALE

UNDERGROUND DETENTION POND "A"

UNDERGROUND DETENTION POND "A"

UNDERGROUND DETENTION POND "A"



ENGINEER:
FORESITE group
Foresite Group, Inc.
3740 Davinci Ct.
Suite 100
Peachtree Corners, GA 30092
www.fg-inc.net
770.368.1399
770.368.1944

DEVELOPER:
JAI RADHE KRISHNA ENTERPRISES, LLC
568 PEACHTREE PARKWAY
CUMMING, GA 30041
CONTACT: RUPESH MANUGULA

PROJECT:
DAY CARE FACILITY - WEBB ROAD
2865 WEBB ROAD
MILTON, GA 30004
L.L. 1048, 2ND DISTRICT, 2ND SECTION
PARCEL #22 527010482814, FULTON CO PERMIT # 20-050WR

SEAL:
GEORGIA REGISTERED PROFESSIONAL ENGINEER
#18502
JAMES PATRICK ETTER
1/13/21

REVISIONS	DATE
ENVIRONMENTAL HEALTH	08-12-2020
CITY COMMENTS	10-7-2020

PROJECT MANAGER:	JPS
DRAWING BY:	JCW
JURISDICTION:	MILTON, GA
DATE:	07-15-2020
SCALE:	AS SHOWN
TITLE:	

UNDERGROUND DETENTION POND DETAILS
SHEET NUMBER: **C-2.8**
COMMENTS: NOT RELEASED FOR CONSTRUCTION
JOB/FILE NUMBER: 1418.001