

**RECOMMENDED MINIMUM TRENCH WIDTHS**

PIPE DIAM.	MIN. TRENCH WIDTH
4"	21"
6"	23"
8"	26"
10"	28"
12"	30"
15"	34"
18"	36"
24"	48"
30"	56"
36"	64"
42"	72"
48"	80"
54"	88"
72"	96"

**MINIMUM RECOMMENDED COVER BASED ON VEHICLE LOADING CONDITIONS**

PIPE DIAM.	SURFACE LIVE LOADING CONDITION	
	H-25	HEAVY CONSTRUCTION (75T AXLE LOAD)
12" - 48"	12"	48"
54" - 72"	24"	72"

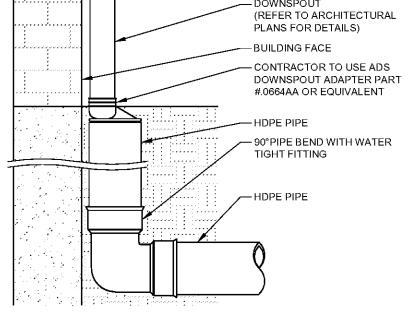
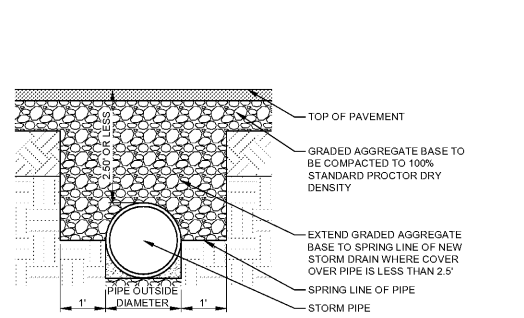
**MINIMUM RECOMMENDED COVER BASED ON RAILWAY LOADING CONDITIONS**

PIPE DIAM.	COOPER E-80**	
	UP TO 24"	24"
30" - 36"	36"	
42" - 72"	48"	

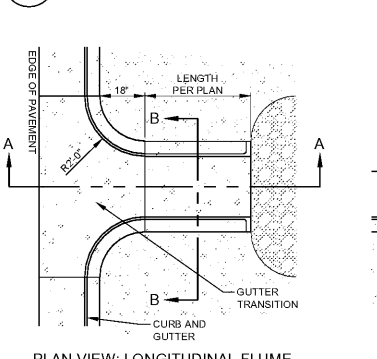
- NOTES:**
- ALL PIPE SYSTEMS SHALL BE INSTALLED IN ACCORDANCE WITH ASTM D2321, "STANDARD PRACTICE FOR UNDERGROUND INSTALLATION OF THERMOPLASTIC PIPE FOR SEWERS AND OTHER GRAVITY FLOW APPLICATIONS", LATEST EDITION.
  - MEASURES SHOULD BE TAKEN TO PREVENT MIGRATION OF NATIVE FINES INTO BACKFILL MATERIAL, WHEN REQUIRED.
  - FOUNDATION:** WHERE THE TRENCH BOTTOM IS UNSTABLE, THE CONTRACTOR SHALL EXCAVATE TO A DEPTH REQUIRED BY THE ENGINEER AND REPLACE WITH SUITABLE MATERIAL AS SPECIFIED BY THE ENGINEER, AS AN ALTERNATIVE AND AT THE DISCRETION OF THE DESIGN ENGINEER, THE TRENCH BOTTOM MAY BE STABILIZED USING A GEOTEXTILE MATERIAL.
  - BEDDING:** SUITABLE MATERIAL SHALL BE CLASS I, II OR III, THE CONTRACTOR SHALL PROVIDE DOCUMENTATION FOR MATERIAL SPECIFICATION TO ENGINEER, UNLESS OTHERWISE NOTED BY THE ENGINEER, MINIMUM BEDDING THICKNESS SHALL BE 4" (100mm) FOR 4"-24" (100mm-600mm); 6" (150mm) FOR 30"-72" (750mm-900mm).
  - INITIAL BACKFILL:** SUITABLE MATERIAL SHALL BE CLASS I, II OR III IN THE PIPE ZONE EXTENDING NOT LESS THAN 6' ABOVE CROWN OF PIPE. THE CONTRACTOR SHALL PROVIDE DOCUMENTATION FOR MATERIAL SPECIFICATION TO ENGINEER. MATERIAL SHALL BE INSTALLED AS REQUIRED IN ASTM D2321, LATEST EDITION.
  - MINIMUM COVER:** MINIMUM COVER, H, IN NON-TRAFFIC APPLICATIONS (GRASS OR LANDSCAPE AREAS) IS 12" FROM THE TOP OF PIPE TO GROUND SURFACE. ADDITIONAL COVER MAY BE REQUIRED TO PREVENT FLOATION. FOR TRAFFIC APPLICATIONS, MINIMUM COVER, H, IS 12" UP TO 48" DIAMETER PIPE AND 24" OF COVER FOR 54"-72" DIAMETER PIPE, MEASURED FROM TOP OF PIPE TO BOTTOM OF FLEXIBLE PAVEMENT OR TO TOP OF RIGID PAVEMENT.

\*\* COVER IS MEASURED FROM TOP OF PIPE TO BOTTOM OF RAILWAY TIE.  
 \*\*\* E-80 COVER REQUIREMENTS, ARE ONLY APPLICABLE TO ASTM F 2306 PIPE.

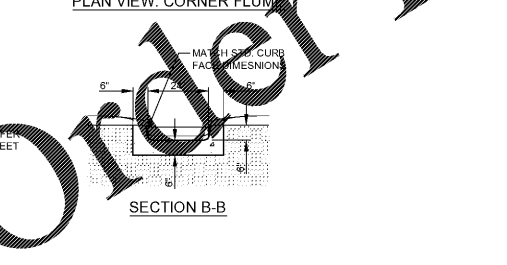
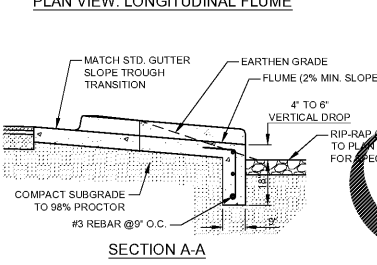
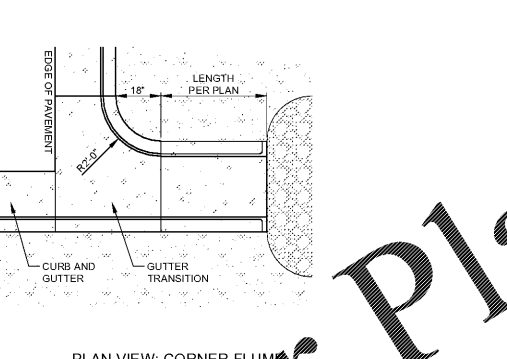
**C-2.7 HDPE BEDDING, TRENCHING, AND BACKFILL**  
 NOT TO SCALE



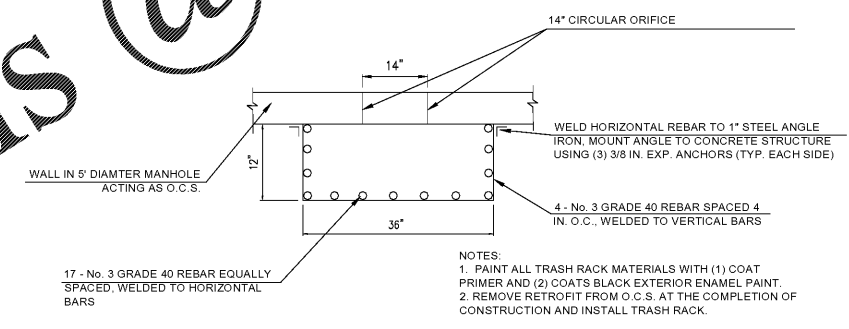
**C-2.7 STORM PIPE MINIMUM COVER**  
 NOT TO SCALE



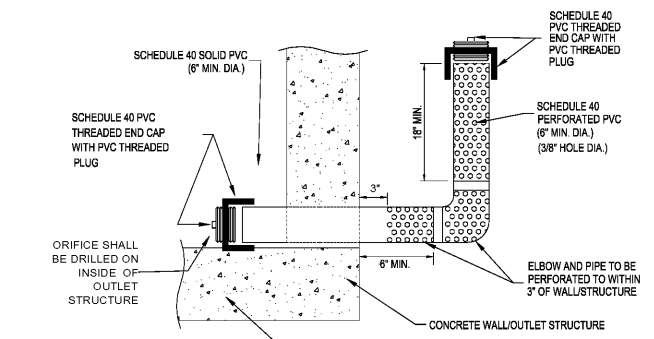
**C-2.7 DOWNSPOUT CONNECTION**  
 NOT TO SCALE



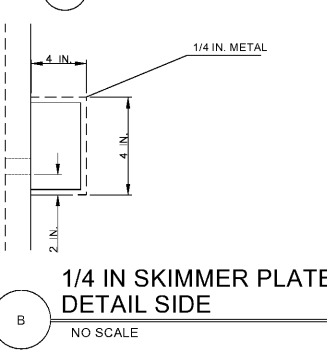
**C-2.7 CONCRETE CURB FLUME**  
 NOT TO SCALE



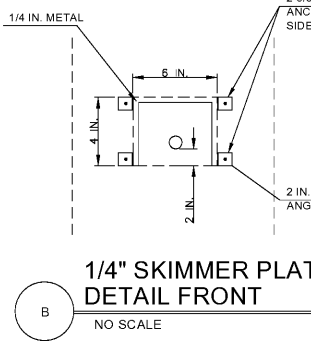
**PERMANENT TRASH RACK DETAIL FOR O.C.S.**  
 NO SCALE



**ORIFICE ANTI-CLOGGING DEVICE**



**1/4 IN SKIMMER PLATE DETAIL SIDE**  
 NO SCALE



**1/4 IN SKIMMER PLATE DETAIL FRONT**  
 NO SCALE



www.LDILine.com

Order Plans @

ENGINEER:  
**FORESITE group**  
 Foresite Group, Inc. | www.fg-inc.net  
 3740 Davinci Ct. | 770.368.1399  
 Suite 100 | 770.368.1944  
 Peachtree Corners, GA 30092

DEVELOPER:  
 JAI RADHE KRISHNA ENTERPRISES, LLC  
 568 PEACHTREE PARKWAY  
 CUMMING, GA 30041  
 CONTACT: RUPESH MANUGULA

PROJECT:  
**DAY CARE FACILITY - WEBB ROAD**  
 2865 WEBB ROAD  
 MILTON, GA 30004  
 ILL. 1048, 2ND DISTRICT, 2ND SECTION  
 PARCEL #22 527010482814, FULTON CO PERMIT # 20-050WPR

SEAL:

REVISIONS	DATE
ENVIRONMENTAL HEALTH	08-12-2020
CITY COMMENTS	10-7-2020

PROJECT MANAGER: JPS  
 DRAWING BY: JCW  
 JURISDICTION: MILTON, GA  
 DATE: 07-15-2020  
 SCALE: AS SHOWN  
 TITLE:

**STORMWATER MANAGEMENT DETAILS**  
 SHEET NUMBER: **C-2.7**  
 COMMENTS: NOT RELEASED FOR CONSTRUCTION  
 JOB/FILE NUMBER: 1418.001