

ENGINEER:  
**FORESITE**  
 group  
 Foresite Group, Inc. w | www.fg-inc.net  
 3740 Davinci Ct. o | 770.368.1399  
 Suite 100 f | 770.368.1944  
 Peachtree Corners, GA 30092

DEVELOPER:  
 JAI RADHE KRISHNA ENTERPRISES, LLC  
 568 PEACHTREE PARKWAY  
 CUMMING, GA 30041  
 CONTACT: RUPESH MANUGULA

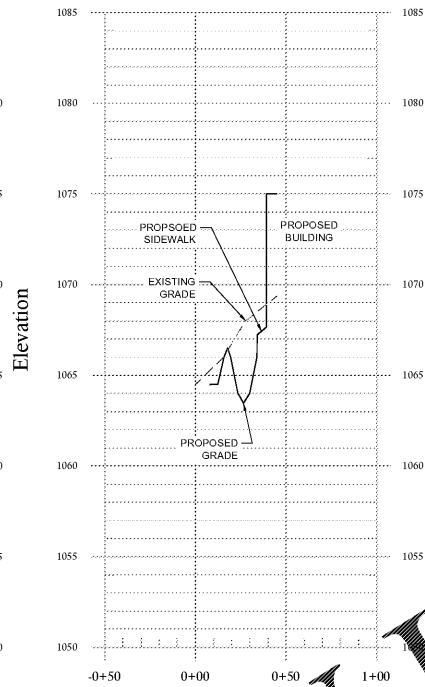
PROJECT:  
**DAY CARE FACILITY - WEBB ROAD**  
 2885 WEBB ROAD  
 MILTON, GA 30004  
 I.L.L. 1048, 2ND DISTRICT, 2ND SECTION  
 PARCEL #22 527010482814, FULTON CO PERMIT # 20-050WR

SEAL:  

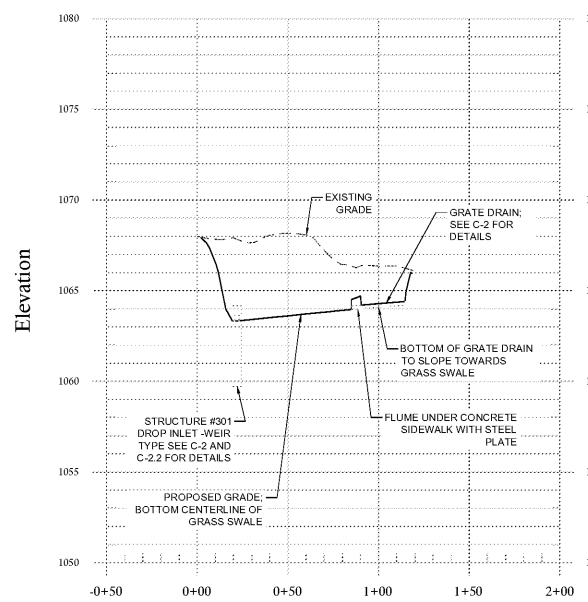

REVISIONS DATE  
 ENVIRONMENTAL HEALTH 08-12-2020  
 CITY COMMENTS 10-7-2020  
 PROJECT MANAGER: JPS  
 DRAWING BY: JCW  
 JURISDICTION: MILTON, GA  
 DATE: 07-15-2020  
 SCALE: AS SHOWN  
 TITLE:

GRASS SWALE PROFILES AND  
 DETAILS  
 SHEET NUMBER:  
**C-2.6**  
 COMMENTS: NOT RELEASED FOR CONSTRUCTION  
 JOB/FILE NUMBER: 1418.001

GRASS SWALE X-SECTION  
 1" = 50' H, 1" = 5' V



GRASS SWALE CENTERLINE  
 1" = 50' H, 1" = 5' V



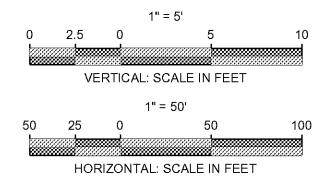
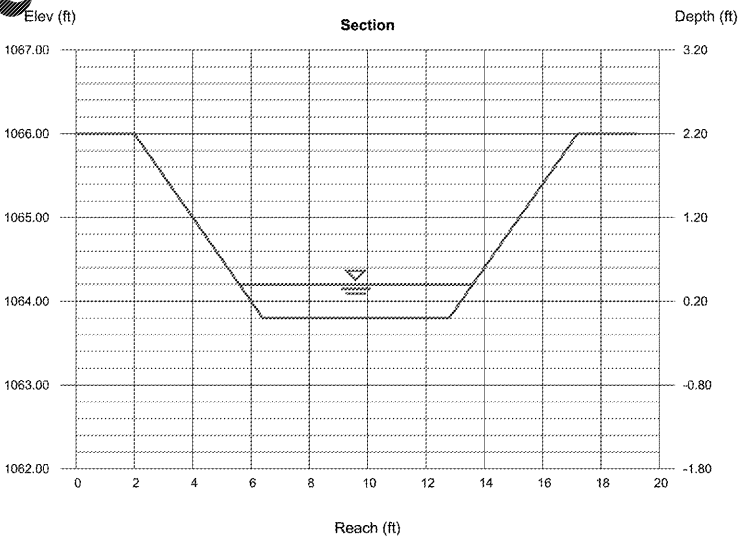
**Channel Report**

Hydroflow Express Extension for Autodesk® AutoCAD® Civil 3D® by Autodesk, Inc. Friday, Aug 27 2020

**GRASS SWALE #1**

<b>Trapezoidal</b>		<b>Highlighted</b>	
Bottom Width (ft)	= 6.40	Depth (ft)	= 0.40
Side Slopes (z:1)	= 2.00, 2.00	Q (cfs)	= 0.950
Total Depth (ft)	= 2.40	Area (sqft)	= 2.88
Invert Elev (ft)	= 1063.80	Velocity (ft/s)	= 0.33
Slope (%)	= 12.2	Wetted Perim (ft)	= 8.19
N-Value	= 0.40	Crit Depth, Yc (ft)	= 0.09
		Top Width (ft)	= 8.00
		EGL (ft)	= 0.40
<b>Calculations</b>		CHANNEL LENGTH = 72'	
Compute by:	Known Q		
Known Q (cfs)	= 0.95 (25 YR.)		

Q = 0.95  
 A = 0.4 ACRES  
 $A = ((0.06 \times 0.2) + ((0.06 \times 0.5) + (0.07 \times 0.9))) \times 0.24 = 0.48$   
 $A = 5 \text{ MINUTES (MINIMUM)}$   
 $I = 0.25$



Order Plans @ [www.LDILine.com](http://www.LDILine.com)



C:\Users\jps\OneDrive\Desktop\1418\1418-001\1418-001.dwg 11/15/2020 10:00:00 AM 1418-001.dwg 1418-001.dwg