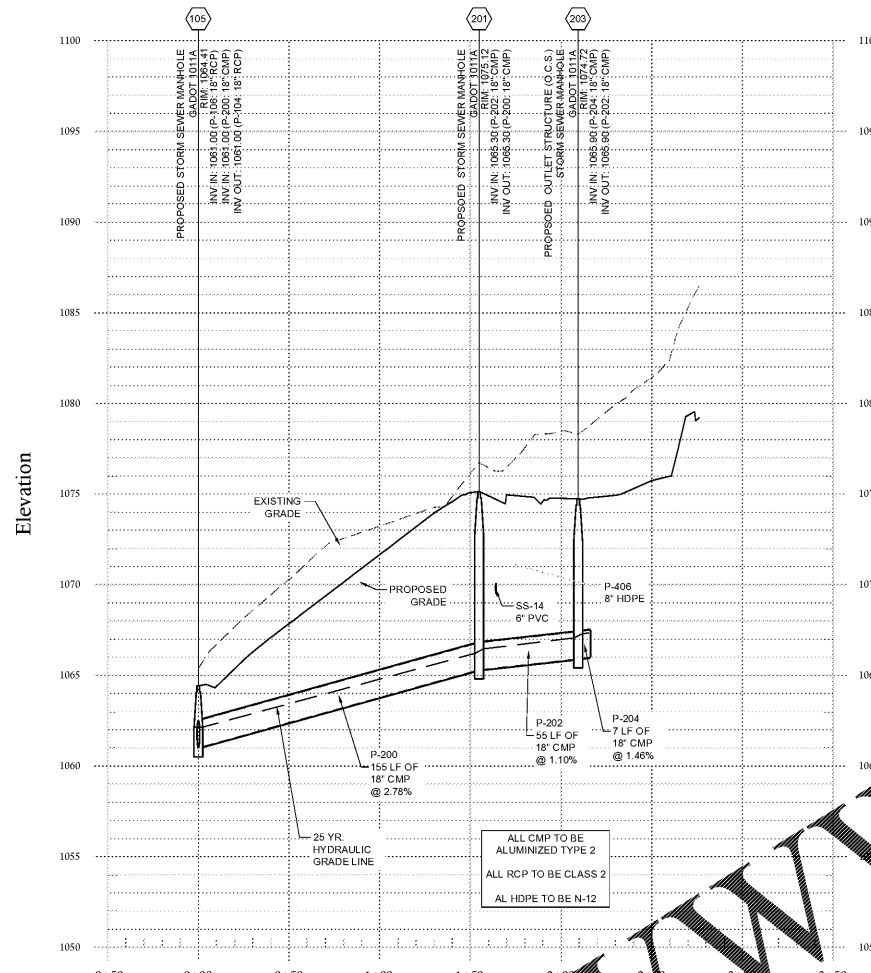
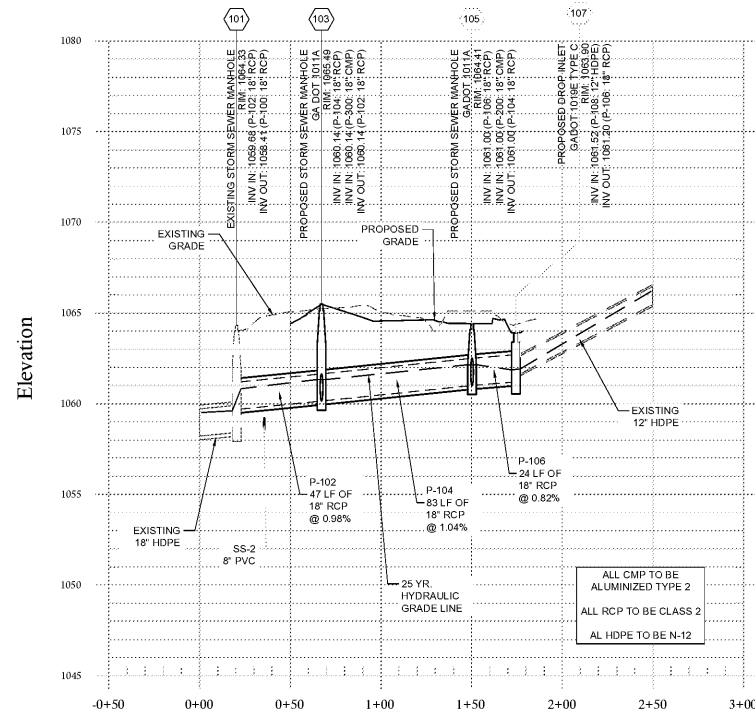


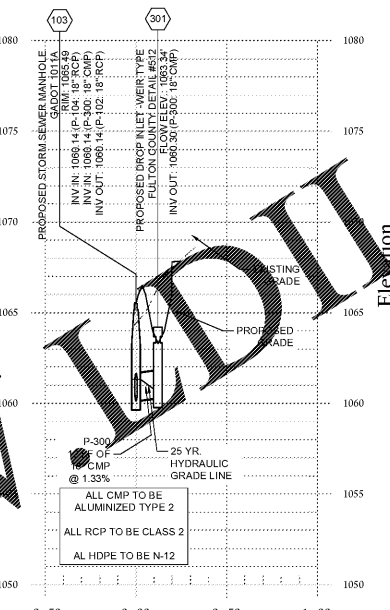
STORM 200
1" = 50' H, 1" = 5' V



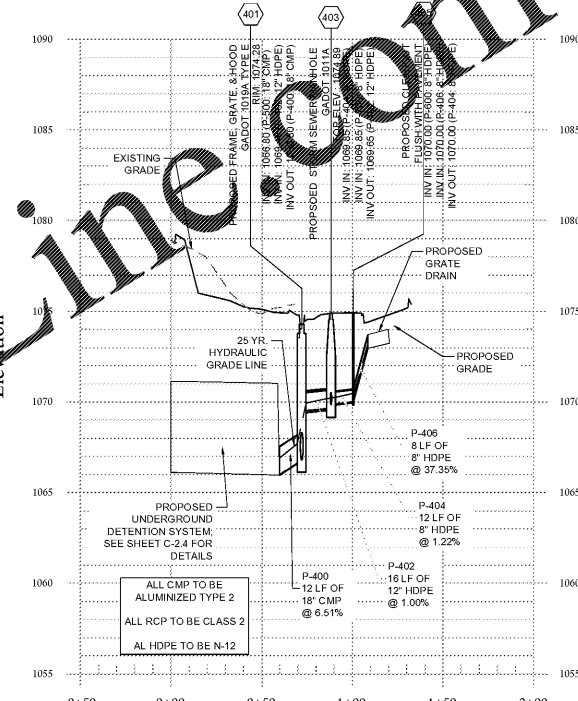
STORM 100
1" = 50' H, 1" = 5' V



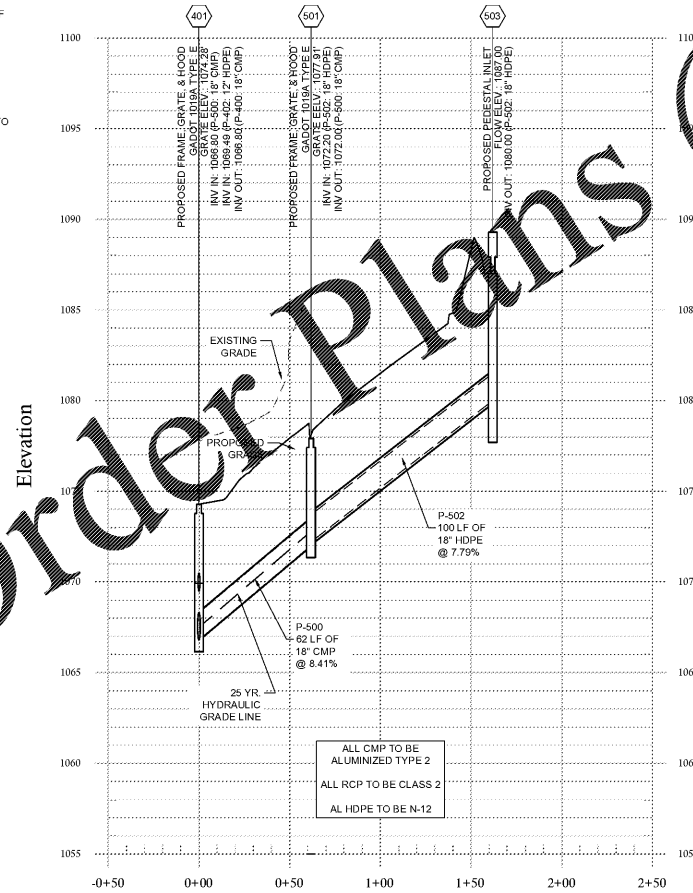
STORM 300
1" = 50' H, 1" = 5' V



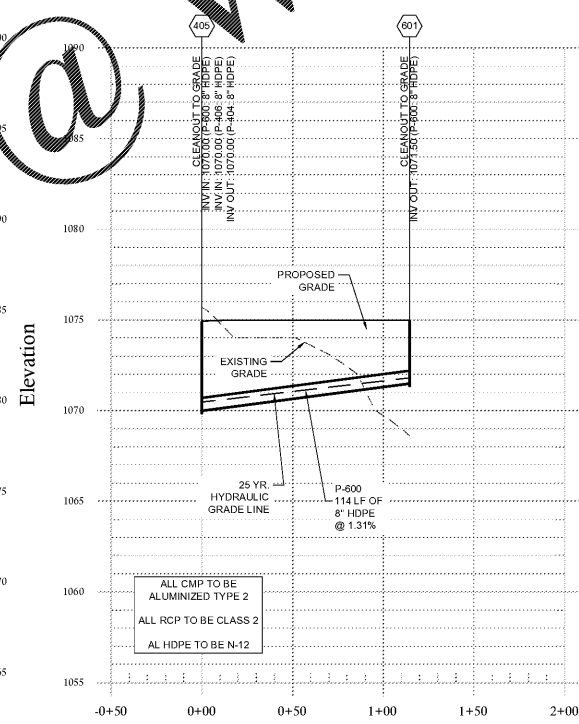
STORM 400
1" = 50' H, 1" = 5' V



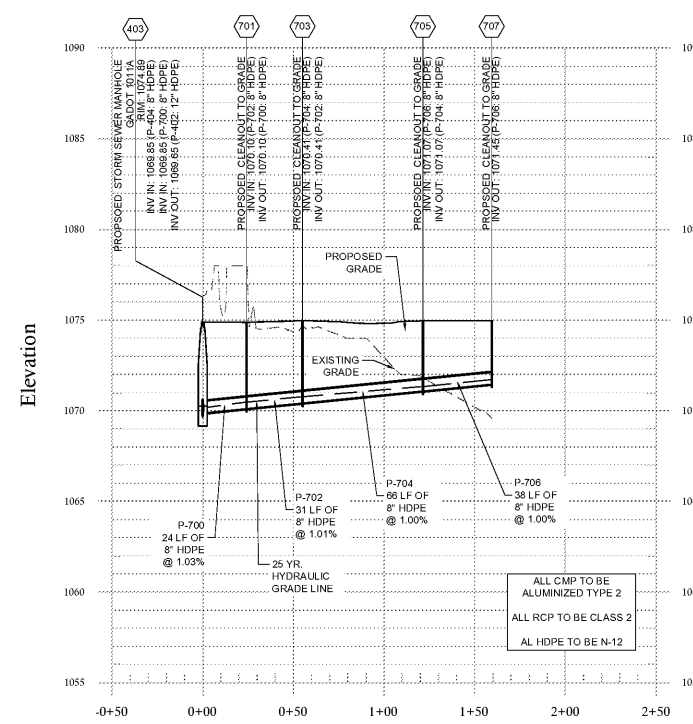
STORM 500
1" = 50' H, 1" = 5' V



STORM 600
1" = 50' H, 1" = 5' V



STORM 700
1" = 50' H, 1" = 5' V

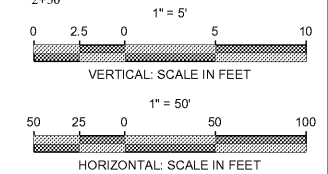


- GENERAL NOTES:**
- 1) PIPE LENGTHS REFLECT THE PIPES LINEAR LENGTH AND ARE SHOWN FROM CENTER OF STRUCTURE TO CENTER OF STRUCTURE.
 - 2) EXISTING UTILITY DEPTHS ARE APPROXIMATED BASED ON A 4 FT COVER FROM THE EXISTING GROUND SURFACE. PROPOSED UTILITY DEPTHS ARE BASED ON 4 FT OF COVER FROM THE PROPOSED GROUND SURFACE. CONTRACTOR SHALL FIELD VERIFY ALL UTILITY DEPTHS AT CROSSING AND CONTACT ENGINEER IMMEDIATELY IF CONFLICTS ARE ENCOUNTERED.
 - 3) CONTRACTOR TO FIELD VERIFY EXISTING ELEVATIONS OF UTILITIES IN RIGHT OF WAY TO AVOID CONFLICTS. CONTACT ENGINEER IMMEDIATELY IF FIELD ELEVATIONS DIFFER FROM THE DESIGN DRAWINGS.
 - 4) MAINTAIN MINIMUM 2' OF COVER OVER METAL AND PLASTIC PIPES DURING CONSTRUCTION ACTIVITIES.

Order Plans @



Know what's below.
Call before you dig.



ENGINEER:
FORESITE group
Foresite Group, Inc. 3740 Davinci Ct. Suite 100 Peachtree Corners, GA 30092
www.fg-inc.net | 770.368.1399 | 770.368.1944

DEVELOPER:
JAI RADHE KRISHNA ENTERPRISES, LLC
568 PEACHTREE PARKWAY CUMMING, GA 30041
CONTACT: RUPESH MANUGULA

PROJECT:
DAY CARE FACILITY - WEBB ROAD
2865 WEBB ROAD MILTON, GA 30004
LLC 1048, 2ND DISTRICT, 2ND SECTION
PARCEL #22 527010482814, FULLTON CO PERMIT # 20-050WR

SEAL:
GEORGIA REGISTERED PROFESSIONAL ENGINEER
JAMES PAULICK ET AL
1/13/21

| REVISIONS | DATE |
|----------------------|------------|
| ENVIRONMENTAL HEALTH | 08-12-2020 |
| CITY COMMENTS | 10-7-2020 |
| PROJECT MANAGER: | JPS |
| DRAWING BY: | JCW |
| JURISDICTION: | MILTON, GA |
| DATE: | 07-15-2020 |
| SCALE: | AS SHOWN |
| TITLE: | |

STORM DRAINAGE PROFILES
SHEET NUMBER: **C-2.2**
COMMENTS: NOT RELEASED FOR CONSTRUCTION
JOB/FILE NUMBER: 1418.001