

- ### GENERAL PLUMBING NOTES
1. PROVIDE ALL BACKING, SUPPORTS AND CARRIERS FOR FIXTURES.
 2. CONTRACTOR SHALL PROVIDE APPROVED ACCESS DOORS IN FRAMED HOLES FOR ALL VALVES AND TRAP PRIMERS WHICH MUST BE LOCATED IN INACCESSIBLE LOCATIONS.
 3. ALL WATER PIPING SHALL BE PITCHED IN DIRECTION OF FLOW TO ALLOW FOR SYSTEM DRAINING.
 4. INSTALL WATER MAIN SHUT-OFF VALVE UPSTREAM FROM PRESSURE REGULATOR.
 5. INSTALL WATER PRESSURE REGULATOR WHERE AVAILABLE UTILITY PRESSURE EXCEEDS 70 PSI. SET PRESSURE REGULATOR AT 65 PSI.
 6. PROVIDE AND LOCATE BACKFLOW PREVENTER WITH TAMPER RESISTANT ACCESS CABINET PER LOCAL CODE.
 7. ROUTE WATER PIPING IN SALES AREA, OVERHEAD AS HIGH AS POSSIBLE.
 8. DRAIN, WASTE AND VENT LINES SHALL PASS INSPECTION UNDER HEAD OF WATER BY SYSTEM WITH WATER TO TOP OF HIGHEST VENT STACK.
 9. WATER LINES SHALL PASS INSPECTION OF FOUR (4) HOURS UNDER 150 PSI PRESSURE. BEFORE ANY USE OF SYSTEM IS MADE FOR DOMESTIC PURPOSES, IT SHALL BE DISINFECTED BY SLOWLY FILLING WITH WATER TO WHICH A DISINFECTING AGENT HAS BEEN INJECTED AT A RATE OF 50 P.P.M. OF CHLORINE. WATER SHOULD BE ALLOWED TO STAND IN THE PIPING FOR AT LEAST 24 HOURS, AFTER WHICH TESTS FOR RESIDUAL CHLORINE SHALL SHOW NOT LESS THAN FIVE (5) P.P.M. OF RESIDUAL CHLORINE AT EVERY OUTLET. AFTER REQUIRED RESIDUAL IS OBTAINED AT EVERY OUTLET, THE SYSTEM SHALL BE FLUSHED UNTIL THE CHLORINE LEVEL AT EVERY OUTLET IS REDUCED TO THAT OF INCOMING WATER SUPPLY.
 10. SEPTIC SYSTEM NOT ALLOWED UNLESS WRITTEN APPROVAL BY DOLLAR GENERAL.
 11. HOLDING TANK SYSTEMS NOT ALLOWED.
 12. LIFT STATIONS ARE NOT ALLOWED WITHOUT DOLLAR GENERAL APPROVAL.
 13. CONTRACTOR RESPONSIBLE FOR ALL PUBLIC UTILITY CONNECTIONS.
 14. ALL PLUMBING MATERIALS SHALL COMPLY WITH CODE.
 15. REFER TO SHEET P1.0 FOR MATERIALS.

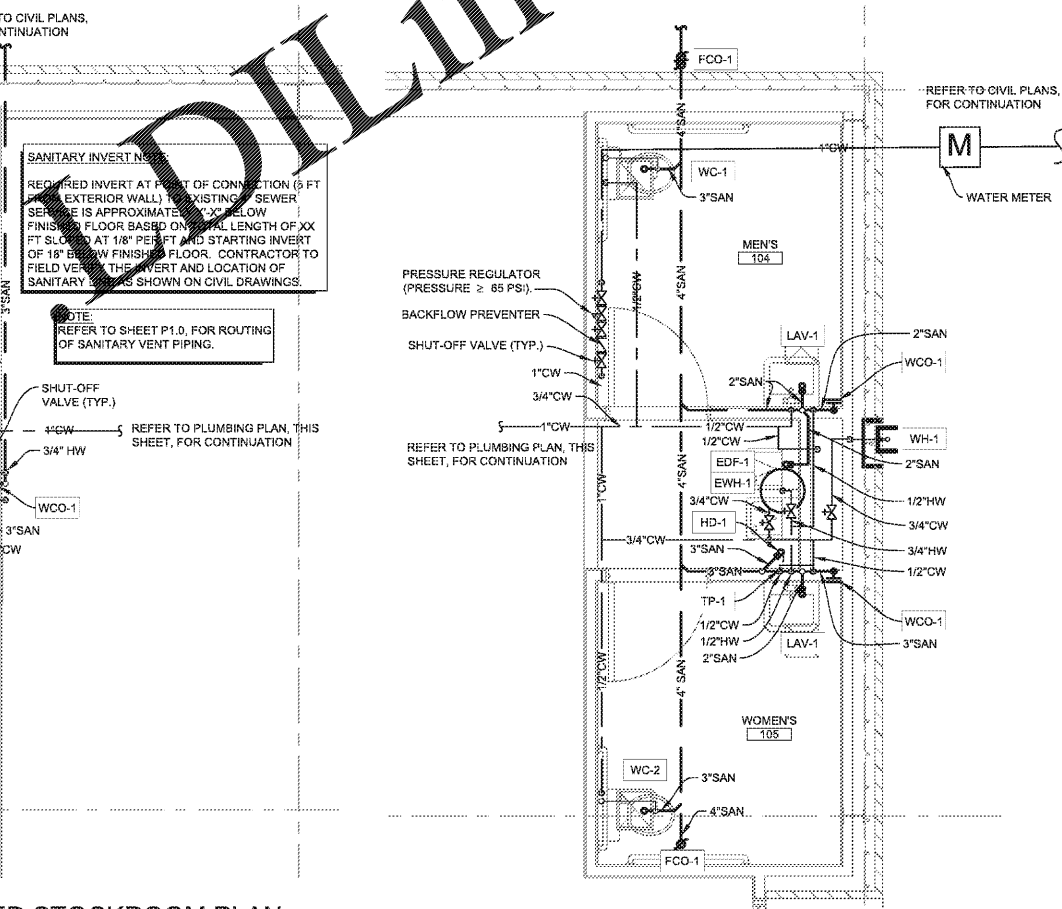
DEVELOPER NOTE

1. DEVELOPER SHALL VERIFY APPROPRIATE PLUMBING CODE AND ADJUST SLOPE INFORMATION ACCORDINGLY.
2. CALIFORNIA PROJECTS REQUIRE 2% SLOPE (OR 1/4" PER FOOT) FOR HORIZONTAL DRAINAGE PIPE SIZES 4" OR SMALLER, PER 2010 CALIFORNIA PLUMBING CODE.

SLOPE OF HORIZONTAL DRAINAGE PIPE	
SIZE	MINIMUM SLOPE
2-1/2" OR LESS	1/4" / FT OR 2%
3" TO 6"	1/8" / FT OR 1%

SCHEDULE BASED ON 2012 INTERNATIONAL PLUMBING CODE, SECTION 704 - TABLE 704.1.

DRAWING NOTE
VERIFY SIZE OF DOMESTIC WATER SERVICE AND SANITARY SEWER LINES. COORDINATE INCOMING LOCATION WITH PLAN AND CIVIL DRAWINGS.



3 ENLARGED STOCKROOM PLAN
P2.0 3/8" = 1'-0"

2 ENLARGED TOILET PLAN
P2.0 3/8" = 1'-0"

PLUMBING FIXTURE SCHEDULE						
MARK	DESCRIPTION	HW CONNECTION	CW CONNECTION	WASTE CONNECTION	VENT CONNECTION	REMARKS
LAV-1	ADA LAVATORY	1/2"	1/2"	2"	1-1/2"	20"X18" WALL HUNG ADA LAVATORY WITH 1/2" OVER FLOOR, COP CEILING HANGERS & 4" CENTERS. AMERICAN STANDARD LUCERNE #0355.012 OR EQUAL. FAUCET SHALL BE POLISHED CHROME-PLATED CAST BRASS BODY WITH TEMPERATURE SENSING VALVE. 1/2" CHROME-PLATED METAL PUSH BUTTON: 1/3" BRASS S-3805-VR-VF06 OR EQUAL. INSULATED EXPOSED DRINK & WASTE PIPES WITH TRUEBRO LAV GUARD KIT #102 E-Z. PROVIDE SUPPLIER STOP VALVES AND P-TRAP.
WC-1	ADA WATER CLOSET LEFT-HAND TRIP LEVER	-	1/2"	4"	2"	FLOOR MOUNTED ADA VITREOUS CHINA ELONGATED 1.28 FLUSH GALLON CLOSE COUPLED TWO PIECE SIPHON WATER CLOSET, FLUSH TANK WITH 12" ROUGH-IN. AMERICAN STANDARD CHAMPION 4 "RIGHT HEIGHT" #2501.001 OR EQUAL. PROVIDE STOP VALVE, FLEXIBLE SUPPLY LINE, OPEN FRONT SEAT (AMERICAN STANDARD #5901.100 OR EQUAL). PROVIDE STOP VALVE AND FLEXIBLE SUPPLY.
WC-2	ADA WATER CLOSET RIGHT-HAND TRIP LEVER	-	1/2"	4"	2"	FLOOR MOUNTED ADA VITREOUS CHINA ELONGATED 1.8 FLUSH 1.8 GALLON CLOSE COUPLED TWO PIECE SIPHON WATER CLOSET, FLUSH TANK WITH 12" ROUGH-IN. AMERICAN STANDARD CHAMPION 4 "RIGHT HAND" #2501.001 OR EQUAL. PROVIDE SUPPLY & STOP. PROVIDE OPEN FRONT SEAT. AMERICAN STANDARD #5901.100 OR EQUAL. PROVIDE STOP VALVE AND FLEXIBLE SUPPLY.
EWH-1	ELECTRIC WATER HEATER	3/4"	3/4"	-	-	PROVIDE 20 GALLON ELECTRIC WATER HEATER, 1.65KW @ 120V WITH MANUFACTURER SUPPLIED TEMPERATURE AND PRESSURE RELIEF VALVE. A.O. SMITH #EJC-20, OR EQUAL. SET WATER HEATER TEMPERATURE AT 110°F MAXIMUM. PROVIDE THERMAL EXPANSION TANK: AMTROL WELL-X-TROL WX-103, OR EQUAL. EXPANSION TANK SUPPORT: IT IS THE CONTRACTOR'S RESPONSIBILITY TO PROVIDE ADEQUATE SUPPORT FOR THE EXPANSION TANK. SUPPORT TO ADJACENT WALL OR FROM EXISTING STRUCTURE ABOVE WITH UNISTRUT. DO NOT SUPPORT FROM PIPE ALONE. PROVIDE DRAIN PAN UNDER SHELF-MOUNTED WATER HEATER. PROVIDE SEISMIC STRAPPING ON WATER HEATER. TERMINATE DRAIN LINE IN MOP SINK (EWH-1). PROVIDE FULL SIZE T&P RELIEF LINE, REFER TO WATER HEATER DETAIL ON SHEET P1.0 FOR ADDITIONAL INFORMATION.
MS-1	MOP SINK	-	3/4"	3"	2"	24" X 24" MOLDED STONE MOP SERVICE BASIN, WITH 3" DRAIN. FIAT #MS-2424 OR EQUAL. PROVIDE SERVICE FAUCET WITH PAIL HOOK & INTEGRAL VACUUM BREAKER, MOP BRACKET, FLAT STAINLESS STEEL STRAINER AND HOSE & BRACKET. FIAT #830 AA, 889 CC, 1453 B9 & 832 AA OR EQUAL. PROVIDE SUPPLIES AND P-TRAP.
EDF-1	BARRIER FREE ELECTRIC DRINKING FOUNTAIN	1/2"	-	2"	1-1/2"	TWO-STATION, WALL MOUNTED, ELECTRIC DRINKING FOUNTAIN, BARRIER-FREE ACCESS (ADA), FRONT ONLY EASY TOUCH CONTROL, HIGH UNIT ON RIGHT. ELKAY #E2LRDDC OR EQUAL. PROVIDE SUPPLY, STOP VALVE & P-TRAP. PROVIDE CANE APRON AS REQUIRED.
WH-1	WALL HYDRANT	3/4"	-	-	-	FREEZE-PROOF WALL HYDRANT WITH BRONZE BODY & ANTI-SIPHON VACUUM BREAKER, BOX AND LOCKING COVER. PROVIDE WITH HOSE CONNECTION AND MOUNT AT 24" ABOVE GRADE. WOODFORD #865 OR EQUAL.
WCO-1	WALL CLEAN-OUT	-	-	AS SHOWN ON PLANS	-	SIZE & INSTALL AS SHOWN ON PLANS. JOSAM, ZURN OR EQUAL.
ECO-1	EXTERIOR CLEAN-OUT	-	-	4"	-	PROVIDE TRAFFIC RATED, 2-WAY, EXTERIOR CLEANOUT, TYLER PIPE #003519, OR EQUAL.
FCO-1	FLOOR CLEAN-OUT	-	-	AS SHOWN ON PLANS	-	PROVIDE ADJUSTABLE FLOOR CLEANOUT WITH WATERTIGHT TAPERED THREADED PLUG AND ROUND SCOURATED SECURED TOP, ADJUSTABLE TO FINISHED FLOOR. SIZE & INSTALL AS SHOWN ON PLANS. JOSAM, ZURN OR EQUAL.

ALL PLUMBING FIXTURES SHALL BE HIGH EFFICIENCY FIXTURES-SECTION 301.1 AMENDMENTS

SYMBOL LEGEND

	SANITARY PIPING
	SANITARY PIPING BELOW
	VENT PIPING
	GAS PIPING
	COLD WATER PIPING
	HOT WATER PIPING
	SHUT-OFF VALVE
	BACKFLOW PREVENTER
	PRESSURE REGULATOR
	WALL CLEANOUT
	FREEZE-PROOF HOSE BIBB
	2-WAY EXTERIOR CLEANOUT
	FLOOR CLEANOUT

CIVIL ENGINEERING DESIGN COORDINATION NOTICE

NOTICE TO ALL PARTIES HAVING AN INTEREST IN THIS CONSTRUCTION PROJECT:

1. CIVIL ENGINEERING FOR THIS PROJECT IS BEING PERFORMED BY OTHERS.
2. CONTRACTORS RELYING ON DOCUMENTS NOT COORDINATED WITH THE CIVIL ENGINEERING WORK SHALL DO SO AT THEIR OWN RISK.
3. COORDINATION WITH THE CIVIL ENGINEERING DOCUMENTS HAS BEEN COMPLETED ONLY AS SHOWN BELOW.

CIVIL ENGINEERING CONSULTANT IS: COMPANY NOAME
ADDRESS
CITY, STATE
CONTACT: XXX XXX-XXXX
PHONE: (XXX) XXX-XXXX

CIVIL SHEET DWG. NO.	CIVIL SHEET DWG. TITLE	REV. NO.	REV. DATE	REV. NO.	REV. DATE	REV. NO.	REV. DATE

COORDINATION CHECKED BY: INITIAL DATE INITIAL DATE INITIAL DATE

DISCLAIMER NOTICE:
THE DESIGN BASIS FOR THESE DOCUMENTS WERE BASED ON THE STANDARD PROFFERED DRAWINGS PROVIDED TO US BY DOLLAR GENERAL. THROUGHOUT THESE DOCUMENTS REPRESENTATIVE. THE GENERAL CONTRACTOR SHALL BE RESPONSIBLE FOR FIELD VERIFYING ALL EXISTING CONDITIONS PRIOR TO COMMENCING WITH ANY WORK. MATERIALS, FOUNDATIONS, BUILDING FABRICATION, ETC. ANY DISCREPANCIES BETWEEN THESE DOCUMENTS AND ACTUAL FIELD CONDITIONS SHALL BE BROUGHT TO THE ATTENTION OF THE ARCHITECT PRIOR TO ANY WORK BEING DONE. ANY REQUIRED ENGINEERING CHANGES TO MATCH THE EXISTING SITE CONDITIONS SHALL BE TREATED AS ADDITIONAL SERVICES.

Robert E. Walker, IV
Architect
2229 FIRST AVE. SOUTH
SUITE 110
BIRMINGHAM, Alabama
35233
T-205.254.3212
F-205.254.3269

ROBERT M. BEATTIE, PE
2075 SHELBY OAK COUNTRY - GARDEN AL 35756
PHONE: (205) 988-1000 FAX: (205) 988-1001
WEBSITE: WWW.RMBEATTIE.COM
STRUCTURAL DEPT.: 407 SHELBY OAK - DALLAS, TX 75244
ELECTRICAL DEPT.: 407 SHELBY OAK - DALLAS, TX 75244
MECHANICAL DEPT.: 407 SHELBY OAK - DALLAS, TX 75244
ROBERT M. BEATTIE, PE # 106



DG
DOLLAR GENERAL BUILDING
Prototype 9100 SF B
Store # 22718
DG Woodstock
Bells Ferry Rd.
Woodstock, GA

CONSTRUCTION DOCUMENTS

PROJECT NO.: 8095.97
ISSUED: 01/15/2021

PLUMBING PLANS & SCHEDULES

P2.0